

The Sandbar wetland complex provides spawning, feeding, nursery and cover habitat for fish species based on its landscape position between Lake Champlain and the Lamoille River. Several fish species use parts of this complex for spawning, including northern pike, chain pickerel, redbfin pickerel, largemouth bass, sunfish, bowfin, and bullhead.



Things to do:

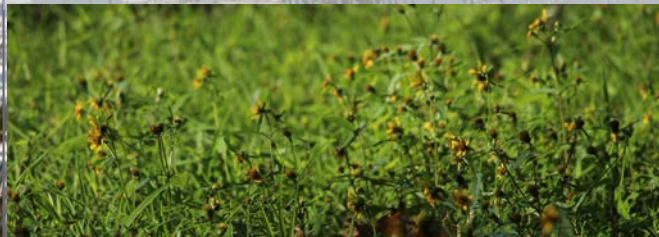
- Birding
- Take in scenic views
- Canoe or kayak
- Regulated fishing, hunting, trapping
- Learn and educate others of the benefits wetlands have on natural functions
- Enjoy Sandbar State Park

Directions:

Sandbar wetland is located within the towns of Milton and Colchester along the north and south sides of U.S. Route 2, just east of the road causeway that crosses Lake Champlain and provides access to the islands.



The wetland is located along the delta of the Lamoille River as it flows into Lake Champlain. The Sandbar State Park is adjacent to the wetland complex, and the Sandbar Wildlife Management Area encompasses a large area of the wetland.

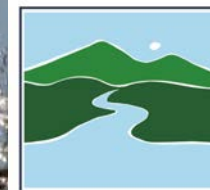


Sandbar Wetland

Milton, Vermont
Class I Wetland



Birding paradise!



VERMONT DEPARTMENT OF
ENVIRONMENTAL CONSERVATION
WATERSHED
MANAGEMENT DIVISION
WETLANDS PROGRAM



The wetland is important for a variety of migratory waterfowl species that use the wetlands for feeding, breeding, and resting. Breeding waterfowl include Black Duck, Wood Duck, Ring - Necked Duck, Mallard Duck, Goldeneye, and Hooded Merganser.

Other species such as Common Snipe, Pied-billed Grebe, Marsh Wren, American Bittern, Least Bittern, Green Heron, Virginia Rail, Sora, Northern Harrier, Bald Eagle, Eastern Screech Owl, and Osprey can also be found feeding and nesting in these wetlands.



Most of its 1,560 acres are a refuge with no public access. However, the upland portion of the WMA northeast of Route 2 is open for public use.



One may also boat along the Lamoille River and in nearby Lake Champlain.

Boats may be put into the Lamoille River at the boat access off Cub Road, or into the Lake across from Sandbar State Park.



Enjoy mesmerizing views over Lake Champlain to the Adirondacks!



Mind your step and Leave No Trace!

Sandbar is irreplaceable because of its landscape position, and the corresponding functions it provides. Sandbar is the link between Lake Champlain and the Lamoille River

The number of rare, threatened, and endangered species within the Sandbar complex show that the wetlands support diverse and critical habitat for all that call this complex home.

