

Minnesota Water Appropriation Regulations and Permitting Program

Vermont Surface Water Diversion and Transfer Study Group

Dan Miller

Water Use Consultant

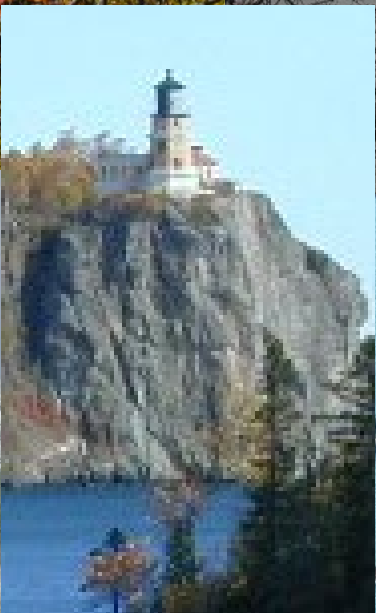
Division of Ecological and Water Resources

July 26, 2021

Overview

- History
- Policy
- Water and Permit Info
- Permitting Process
- Interbasin Transfers





History

The Dust Bowl



Swift County, MN 1936 (MHS)

History of Water Management

- 1937
- Department of Conservation manage water
- Minnesota Statutes and Rules
- Permit system

Water Use Law & Policy

- Balance Use & Protection
- Riparian Rights



Water Allocation Priorities

1.



2.



3.



4.



5.



6.



Minnesota State Agency Roles in Groundwater

Quality

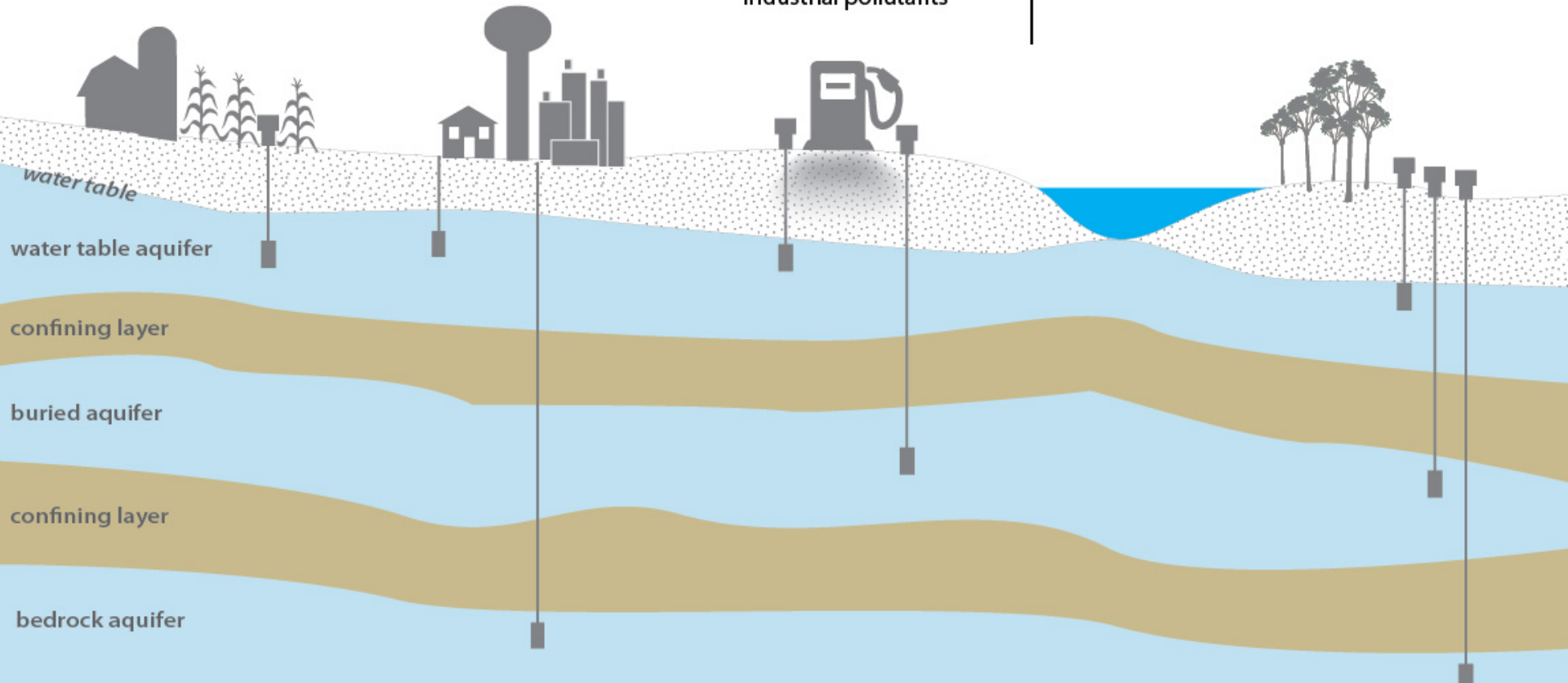
Quantity

MDA
Pesticides
Fertilizer

MDH
Public Water Supply
Well Construction
Health Risk Assessment

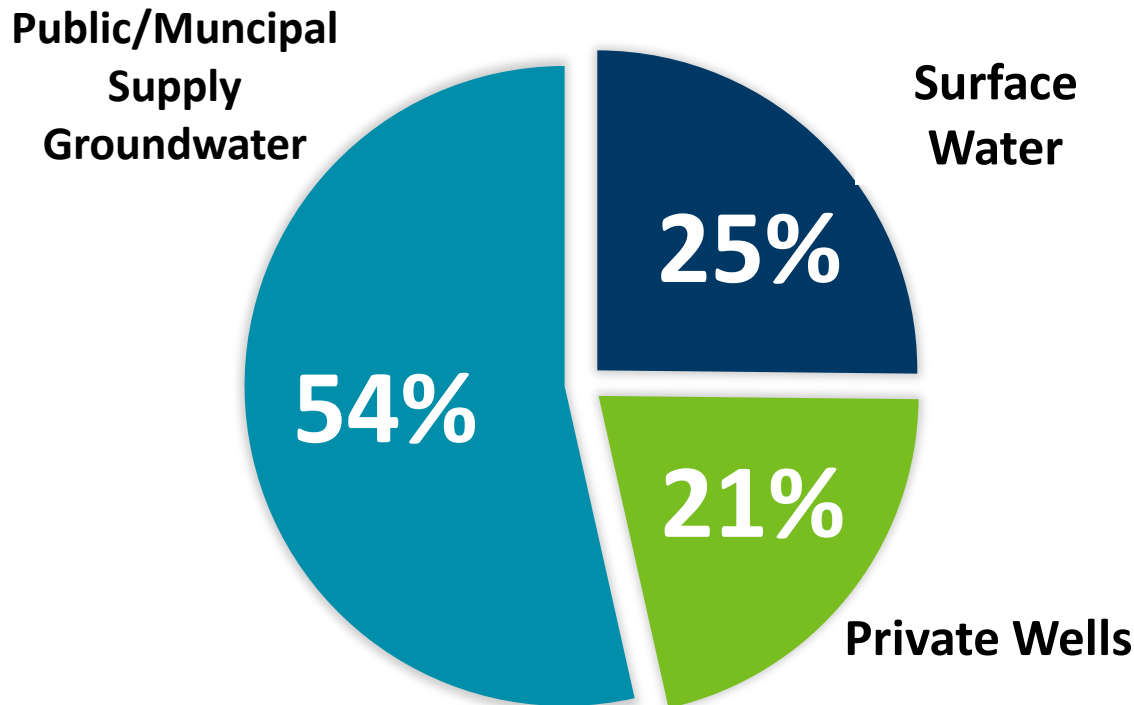
MPCA
Chemical releases
Industrial pollutants

DNR
Water supply/availability
Natural resource/ecosystem function



Where do we get our water?

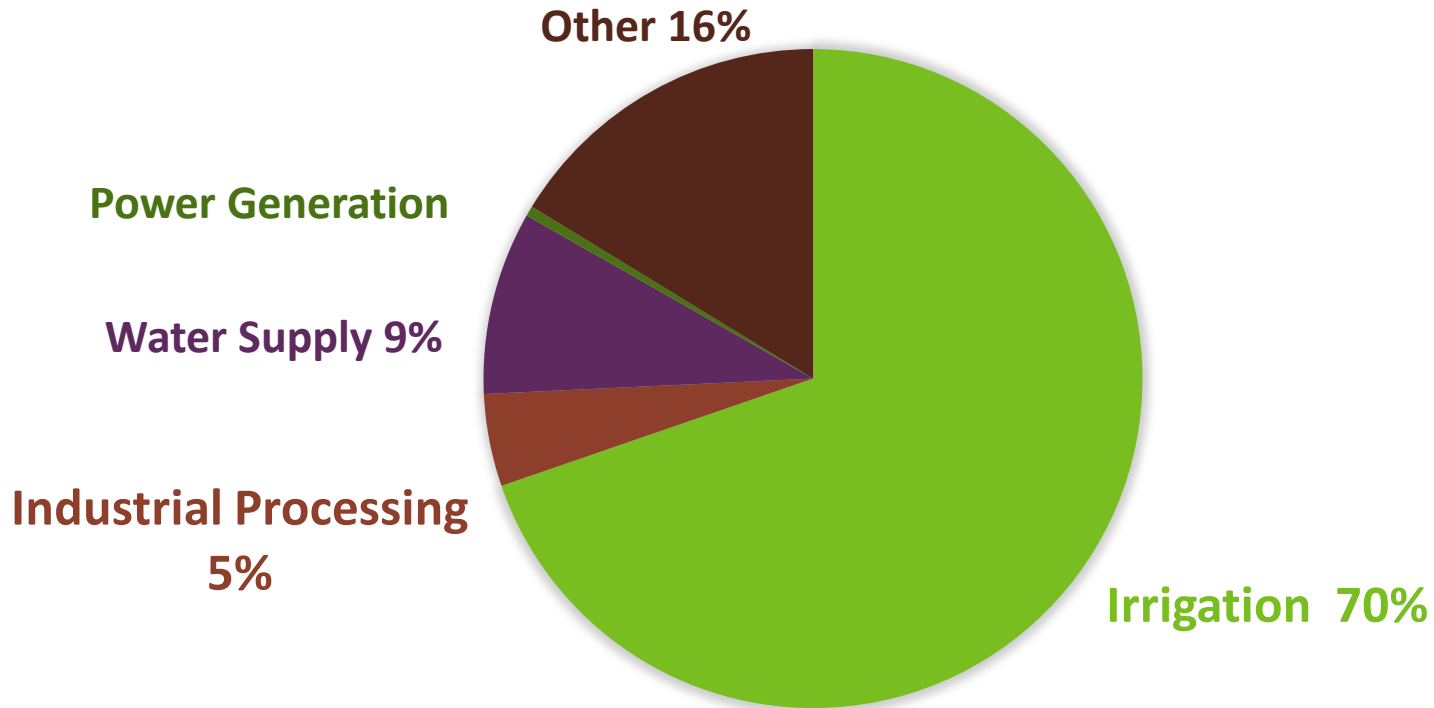
PERCENT OF POPULATION



- 75% of population uses groundwater
- Drought Plan for Surface Water is Using Groundwater

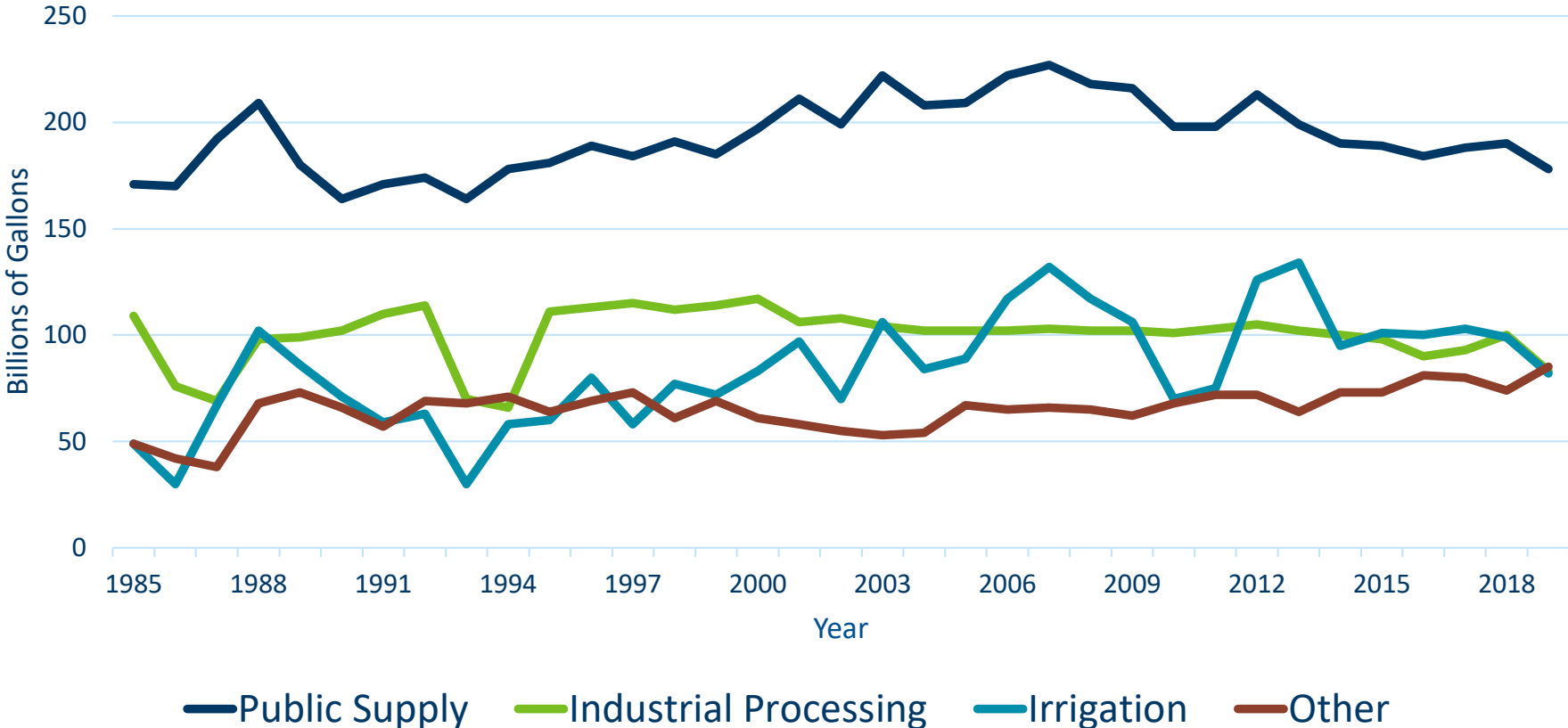
Active Water Use Permits

NUMBER OF CURRENT ACTIVE PERMITS



MN Water Use: 1985 - 2019

MN Water Use in Billions of Gallons (Excluding Power Generation)



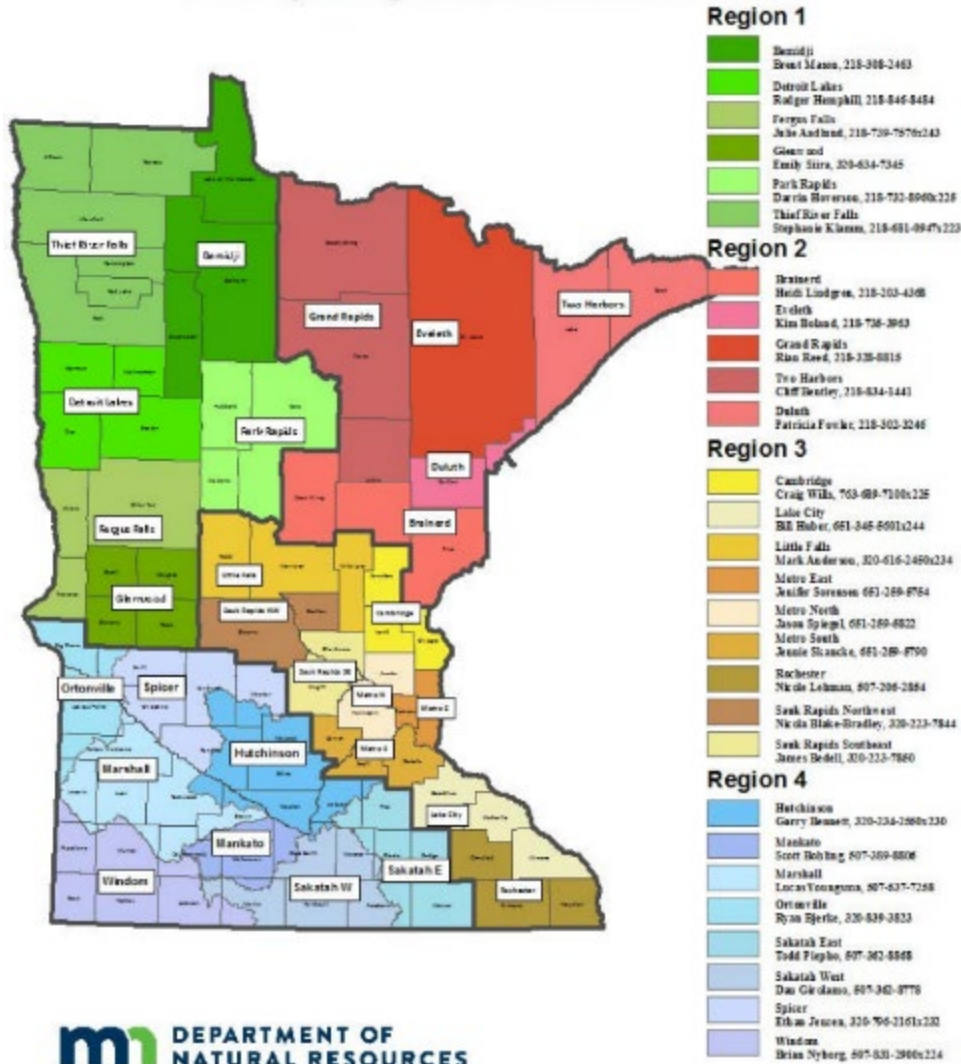
Permits and Reporting Water Use



www.mndnr.gov/mpars/signin

Regions and Area Hydrologists

Area Hydrologist Contact Information



Permitting Process

- Landowner applies for permit
- Application sent out for 30 day agency review
- DNR staff review and analyze information
- More information needed for decision?
- Decision

Permit Applications

Groundwater

- Preliminary Well Construction Assessment
- Application submitted
- 30 day review

Application Review

Key questions to consider:

- Reasonable request?
- Reach of influence?
- Impacts to existing wells?
- Other water users?
- Aquifer impacts?

Additional Review

- Key questions (continued):
 - Groundwater quality?
 - Calcareous fens?
 - Trout streams?
 - Lakes or wetlands?

Surface Water Applications

- Reasonable request
- Other water users
- Protected flow or elevation (basins)
- Trout streams
- Contingency plan for minimal flows

Critical or Minimum Flows

- Restrictions in MN law
- Rivers, streams, lakes, wetlands, ponds, quarries, etc.
- Q90



**Standard
Evaluation
Criteria**

MPARS

Conservation

**Permit
Decision
Making**

**Interagency
Cooperation

**Compliance
and
Enforcement**

**Monitoring
SW & GW**

* DNR, MDH, MPCA,
MDA, Met Council, WSD

Interbasin Transfers

2019 Request

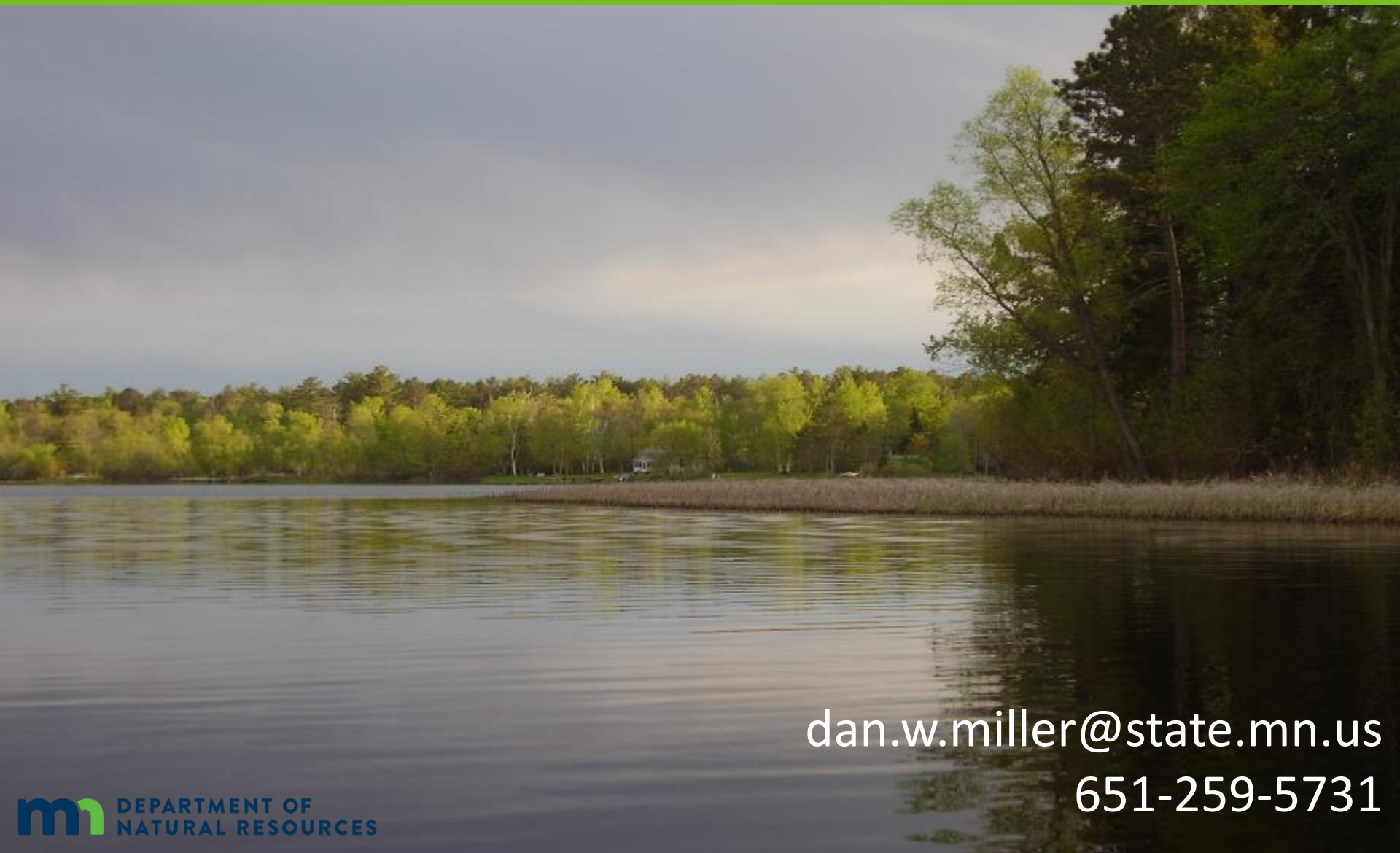
- South of Twin Cities Metro Area
- 500 MG
- Rail Cars to Southwest US
- Communicated to Company

2021 Legislation

Bulk transport or sale of water

- Limited to 50 miles from point of appropriation
- Exception for appropriation for public water supplies: up to 100 miles from point of appropriation

Questions?



dan.w.miller@state.mn.us

651-259-5731