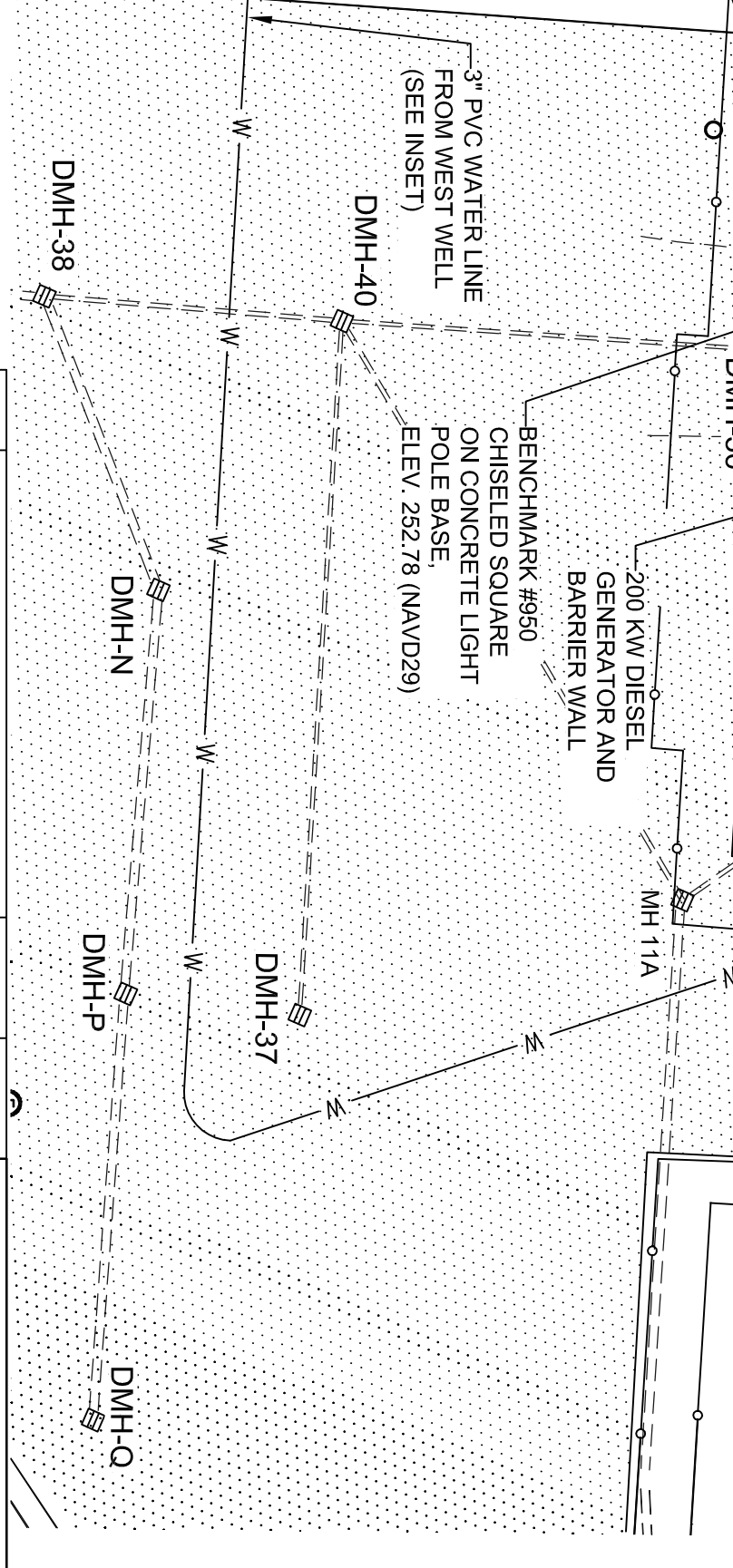
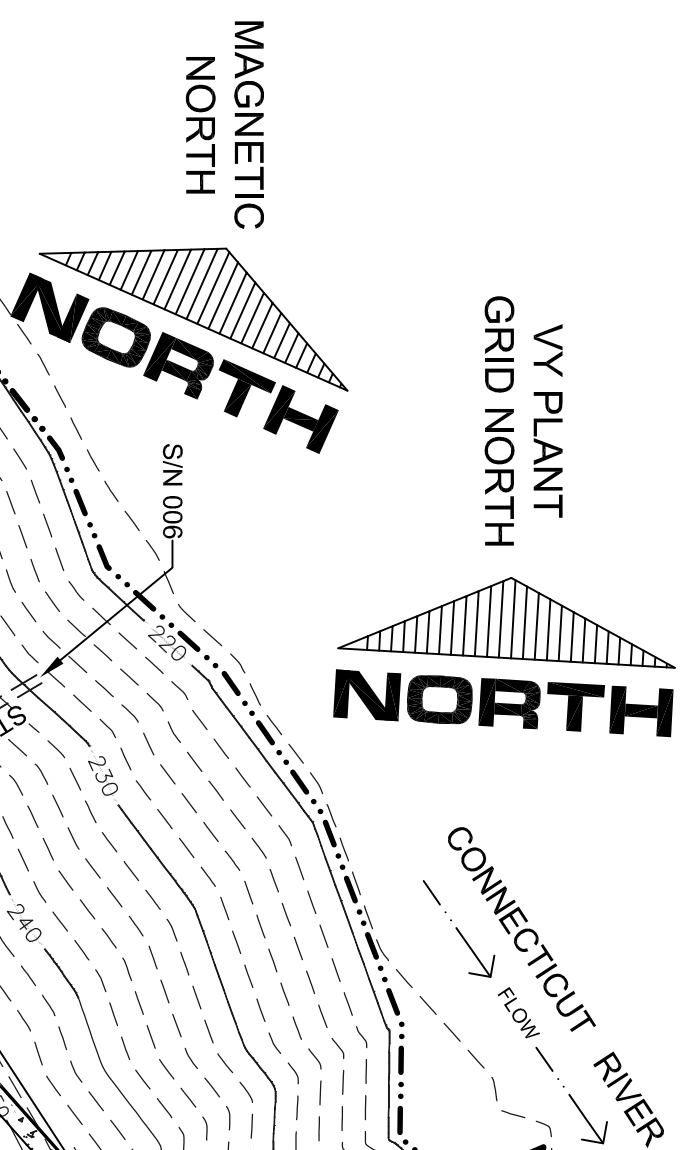


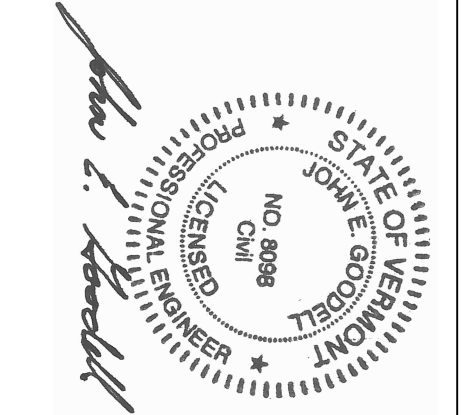
**LEGEND**

- CHAIN LINK FENCE
- APPROXIMATE UNDERGROUND ELECTRIC LINE
- SANITARY SEWER LINE
- WATER LINE
- EXISTING CATCH BASIN
- EXISTING DRAIN MANHOLE
- EXISTING SEWER MANHOLE
- EXISTING ELECTRICAL MANHOLE
- EXISTING LIGHT POLE
- EXISTING BENCHMARK
- EXISTING MONITOR WELL
- EXISTING HYDRANT
- EXISTING WATER VALVE
- EXISTING WELL
- FLOW DIRECTION
- GRAVEL
- ASPHALT PAVEMENT
- CONCRETE

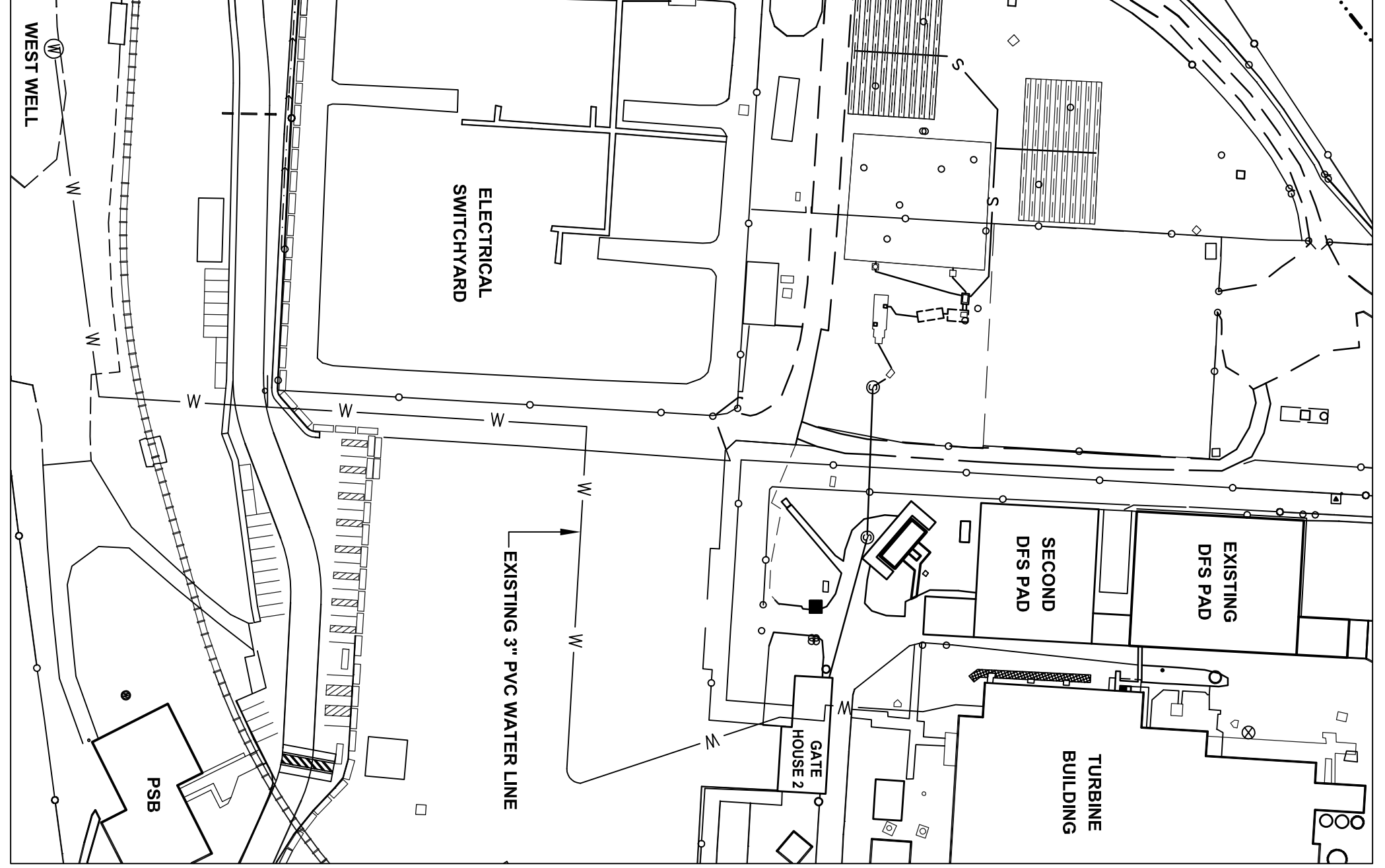


Drawing Name: P:\Project\B4000-34\Energy\Nuclear\_VT\Yankee\_LIC\Security\_NAVD29\dwg\Design\B4000-34-01 NAVD29.dwg Jun 15, 2017 11:32am

REVISION	DESCRIPTION	BY & DATE	CHK & DATE
1	LAST REVISED / ENGINEER'S STAMP APPLIED	6/2/17	
	REVISED PER PER COMMENTS	1.5 4/9/17	ES 4/9/17



- DATUM NOTES**
- D1. ALL ELEVATIONS SHOWN ON THIS PLAN ARE BASED ON THE NAVD88 DATUM FOR CONSISTENCY WITH ENVY SITE DRAWINGS.
  - D2. CERTAIN OTHER PLANS PREPARED BY SVE ASSOCIATES AT THE ENVY SITE, SUCH AS FOR THE VELCO SUBSTATION PROJECT, ARE BASED ON THE NAVD88 DATUM.
  - D3. TO CONVERT AN ELEVATION FROM THE NAVD29 DATUM TO THE NAVD88 DATUM AT THE ENVY SITE, SUBTRACT 0.456 FEET FROM THE NAVD29 ELEVATION. FOR EXAMPLE: 254.0 FEET (NAVD29) MINUS 0.456 FEET (DATUM SHIFT) = 253.544 FEET (NAVD88). DATUM SHIFT VALUE OBTAINED FROM "VERTCON" WEBSITE TOOL JANUARY 22, 2008.



**EXISTING CONDITIONS PLAN**  
**ISFSI PA PROJECT**  
**ENERGY NUCLEAR VERMONT YANKEE, LLC**  
**VERNON, VERMONT**

**SVE Associates**  
 Sweeney Todd J. Sweeney  
 108A Breckleboro, VT 05602-1818 Phone: (802) 257-0861 Fax: (802) 257-0754  
 www.sveassoc.com

DATE PLAN: 11/30/16  
 DATE SUBMIT: 11/22/16  
 DESIGNED BY: [Signature]  
 DRAWN BY: TJS  
 CHECKED BY: JEG  
 SCALE: 1"=40'

PROJ. NO.: B4000-34  
 CAD NO.: B4000-34-01  
 SHEET 1 OF 8





CONNECT 10" CPEP PIPE TO EXISTING DRAIN MANHOLE THROUGH A SMOOTHLY DRILLED HOLE. GROUT PIPE IN PLACE USING NON-SHRINK GROUT IN ACCORDANCE WITH PIPE MANUFACTURER INSTRUCTIONS. PIPE INVERT IN: 246.9 FT.

RE-GRADE 4 FT. SECTION OF GRASS TO SLOPE AWAY FROM CONCRETE WALK AT 0.5% MIN. TO 5% MAX. PER DISCONNECTION CREDIT DETAIL. RE-GRADED SECTION SHALL INCLUDE 3" TOPSOIL, SEED AND MULCH PER SHEET 6. BLEND GRADED AREA INTO EXISTING AS REQUIRED.

MAX. SI OPEN IN ALL DIRECTIONS. PLACE NATIVE FILL IN 12" LIFTS, COMPACT TO 90% MODIFIED PROCTOR. PROVIDE MIN. OF 3" OF TOPSOIL, SEED AND MULCH PER EROSION CONTROL PLAN.

BLOCKS THAT EXTEND PAST EXISTING FENCE WILL BE CANTILEVERED ABOVE EXISTING DISTURBANCE EAST OF EXISTING FENCE.

DISCHARGE POINT SIN 008

CONNECTICUT RIVER

GRAPHIC SCALE



Drawing Name: P:\Project\B4000-34\Energy Nuclear\_VT\Yankee, LLC\Security\_NAVD29\Design\B4000-34-01 NAVD29.dwg Jun 15, 2017 - 12:26pm  
1 inch = 40 ft.  
( IN FEET )



NEW DRAIN BASINS 484 AND 49A. NEW 8" CPEP (ADS N-12 OR EQUAL) NYLOPLAST DRAIN BASINS WITH 18" H-20 RATED STANDARD GRATES. RIM ELEV. 251.5 FT. BOTH GRATES. SEE PROFILE.

INSTALL 18" WIDE 3" HIGH ASPHALT BERM 12" EAST OF CONCRETE RAMP TO DIRECT STORMWATER RUNOFF FROM RAMP TO DMH 47 OR DMH 48

INSTALL 3" WIDE X 3" HIGH ASPHALT BERM ALONG SOUTH EDGE OF VBS BLOCKS THIS SECTION (EXISTING PAVED AREA)

REPLACE EXISTING INLET GRATES ON MH 11F AND MH 11 WITH SOLID WATER TIGHT COVER AND FRAME. ADJUST COVER HEIGHT TO GRADE WITH RISER RINGS AS REQUIRED. RINGS SHALL BE 3/8" H-20 RATED, VENEER POLYETHYLENE SHEET SEALING GASKET OR APPROVED EQUAL.

DMH-43 REPLACE SOLID COVER WITH H-20 RATED SLOTTED COVER, NEENAH OR EQUAL. ADJUST RIM HEIGHT TO ACCEPT STORMWATER FROM ADJACENT PAVEMENT

INSTALL 6" WIDE GRASS CHANNEL AT 0.5% SLOPE. SEE DETAIL

SEE VBS BLOCK SLOPE DETAIL FOR THIS SECTION

DMH-44 NEW 24" DIA. ADS NYLOPLAST DRAIN BASIN WITH 24" DIA. H-20 RATED STANDARD GRATE. RIM ELEV. 248.3 FT., 10" INV. OUT ELEV. 241.3 FT.

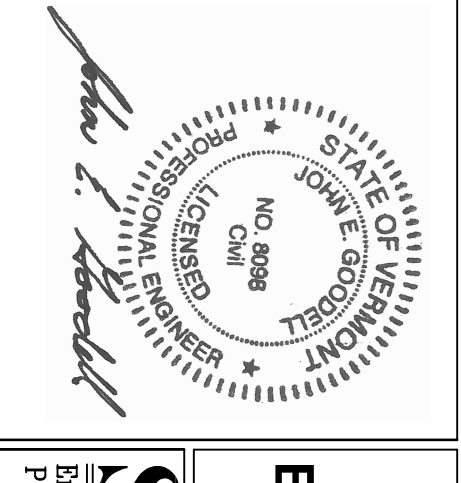
DMH-45 NEW 24" DIA. ADS NYLOPLAST DRAIN BASIN WITH 24" DIA. H-20 RATED STANDARD GRATE. RIM ELEV. 250.8 FT., 8" INV. OUT ELEV. 248.0 FT.

CONNECT TO EXISTING CMP DRAIN MANHOLE THROUGH A SMOOTHLY DRILLED HOLE. GROUT PIPE IN PLACE USING NON-SHRINK GROUT IN ACCORDANCE WITH PIPE MANUFACTURER INSTRUCTIONS. NEW INVERT IN. (TO BE DETERMINED)

CONNECT TO EXISTING CMP DRAIN MANHOLE THROUGH A SMOOTHLY DRILLED HOLE. GROUT PIPE IN PLACE USING NON-SHRINK GROUT IN ACCORDANCE WITH PIPE MANUFACTURER INSTRUCTIONS. NEW INVERT IN. (TO BE DETERMINED)

3/4" HOPE WATER SERVICE. SEE SITE CONSTRUCTION NOTE 6.

REVISION	DESCRIPTION	BY & DATE	CHK. & DATE
1	REV. DMH-34 LOCATION, GRADING NOTE, SOIL STOCKPILE WEST	TS 6/15/17	EG 6/15/17
	LAST REVISION / ENGINEER'S STAMP APPLIED	6/27/17	



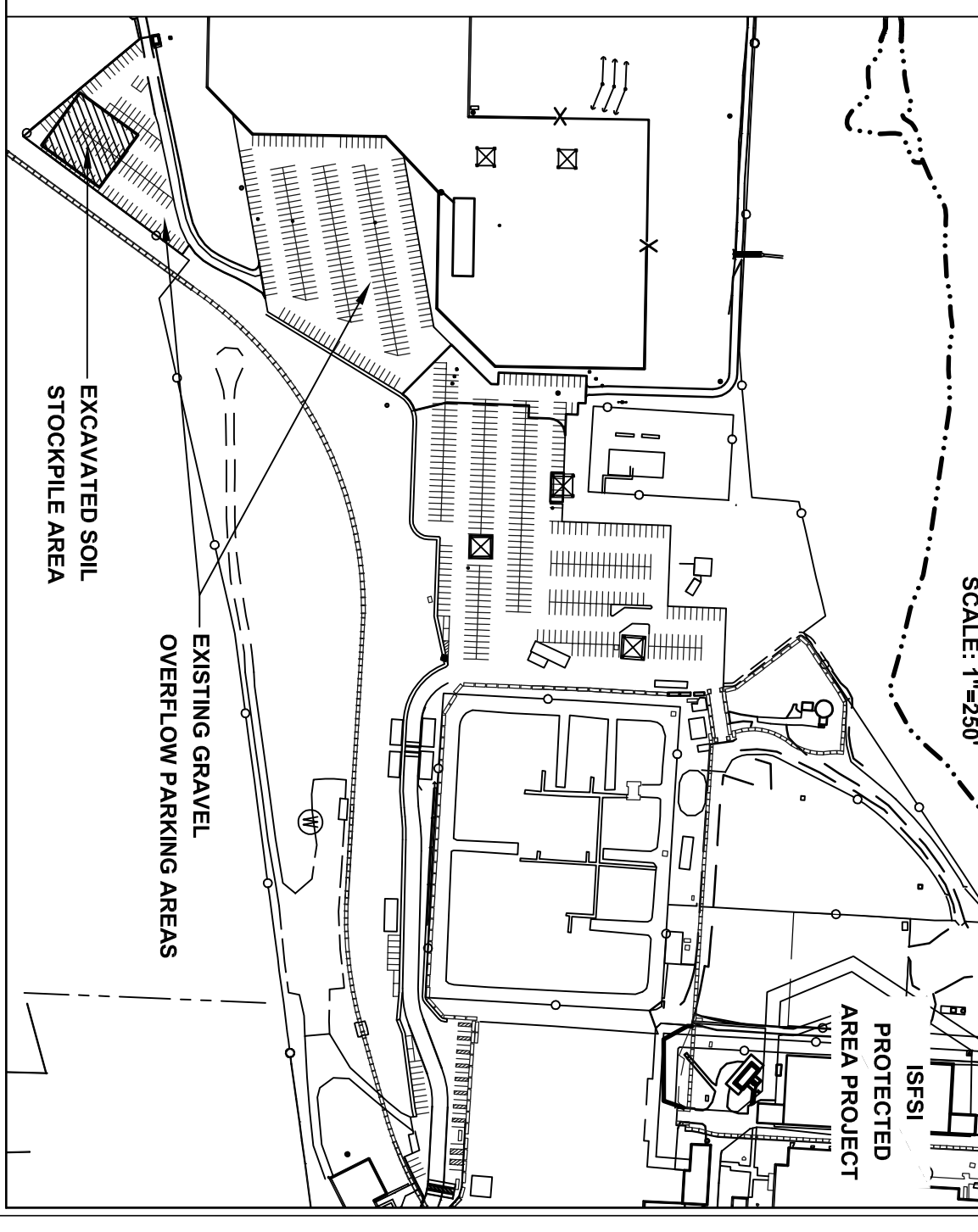
**DATUM NOTES**

- D1. ALL ELEVATIONS SHOWN ON THIS PLAN ARE BASED ON THE NAVD29 DATUM FOR CONSISTENCY WITH ENVY SITE DRAWINGS.
- D2. CERTAIN OTHER PLANS PREPARED BY SVE ASSOCIATES AT THE ENVY SITE, SUCH AS FOR THE VELCO SUBSTATION PROJECT, ARE BASED ON THE NAVD88 DATUM.
- D3. TO CONVERT AN ELEVATION FROM THE NAVD29 DATUM TO THE NAVD88 DATUM AT THE ENVY SITE, SUBTRACT 0.456 FEET FROM THE NAVD29 ELEVATION. FOR EXAMPLE, 254.0 FEET (NAVD29) MINUS 0.456 FEET (DATUM SHIFT) = 253.544 FEET (NAVD88). DATUM SHIFT VALUE OBTAINED FROM "VERTCON" WEBSITE TOOL JANUARY 22, 2008.

**LEGEND**

- CHAIN LINK FENCE
- APPROXIMATE UNDERGROUND ELECTRIC LINE
- SANITARY SEWER LINE
- WATER LINE
- EXISTING CATCH BASIN
- EXISTING DRAIN MANHOLE
- EXISTING SEWER MANHOLE
- EXISTING ELECTRICAL MANHOLE
- EXISTING LIGHT POLE
- EXISTING BENCHMARK
- EXISTING MONITOR WELL
- EXISTING HYDRANT
- EXISTING WATER VALVE
- EXISTING WELL
- FLOW DIRECTION
- GRASSED STORMWATER DISCONNECTION AREAS. SEE DETAIL
- PROPOSED ASPHALT PAVING
- REMOVE 4" MIN. OF EXISTING GRAVEL, SCARIFY SURFACE WITH EXCAVATOR BUCKET TEETH, INSTALL MIN. OF 4" TOPSOIL, SEED AND MULCH PER SHEET 6
- PRE-CAST CONCRETE VBS BLOCKS
- SPOT GRADE ELEVATION

**INSET**



**PROPOSED CONDITIONS PLAN**  
**ISFSI PA PROJECT**  
**ENERGY NUCLEAR VERMONT YANKEE, LLC**  
**VERNON, VERMONT**

**SVE Associates**  
Sverdrup Corbett  
1818  
Burlington, VT 05402  
Phone: (802) 257-0661 Fax: (802) 257-0764  
www.sverdrup.com

DATE PLAN: 11/30/16  
DATE SUBMITTED: 11/22/16  
DESIGNED BY: JEG  
DRAWN BY: TJS  
CHECKED BY: JEG  
SCALE: 1"=40'

PROJ. NO.: B4000-34  
CAD NO.: B4000-34-01  
SHEET 2 OF 8



# Exhibit ANR-REE-2

Annotated by Entergy VY to label Stack and show proposed Central Alarm Station (CAS)

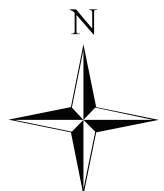
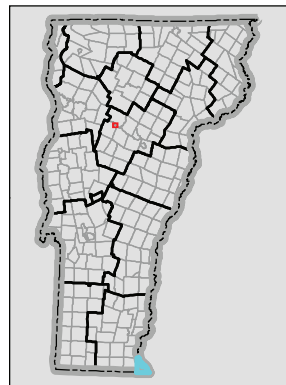


## CT River Corridor at Vernon, VT DEC Watershed Management Division River Corridor and Floodplain Protection

Created 08.14.2015

This map is for illustrative purposes only. The accuracy of the data layers shown on this map are limited by the accuracy of the source materials. No warranty as to the accuracy or the usefulness of the data is expressed or implied.

1:10,000

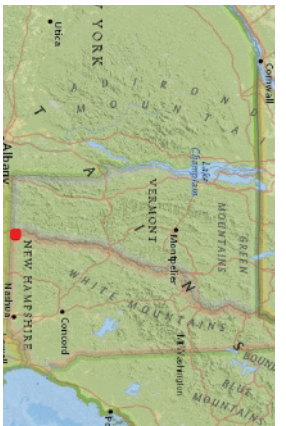


### Legend

CT River Corridor







LEGEND

- Vernal Pools Confirmed – AENVC
- Vernal Pools Unconfirmed – AENVC
- Wetland - VSWI
- Class 1 Wetland
- Class 2 Wetland
- Buffer
- Wetlands Advisory Layer
- Rare Threatened Endangered Species
- Threatened or Endangered
- Rare
- Significant Natural Community
- Uncommon Species and Other Feature
- Animal
- Plant
- Natural Community
- Roads**
  - Principal Arterial
  - Minor Arterial
  - Rural Major Collector
  - Rural Minor Collector
  - Urban Collector
  - Local
  - Not part of the Functional Classification System
- Waterbody
- Stream
- Town Boundary

**1: 11,166**

1in = 930 ft.  
1cm = 112 meters



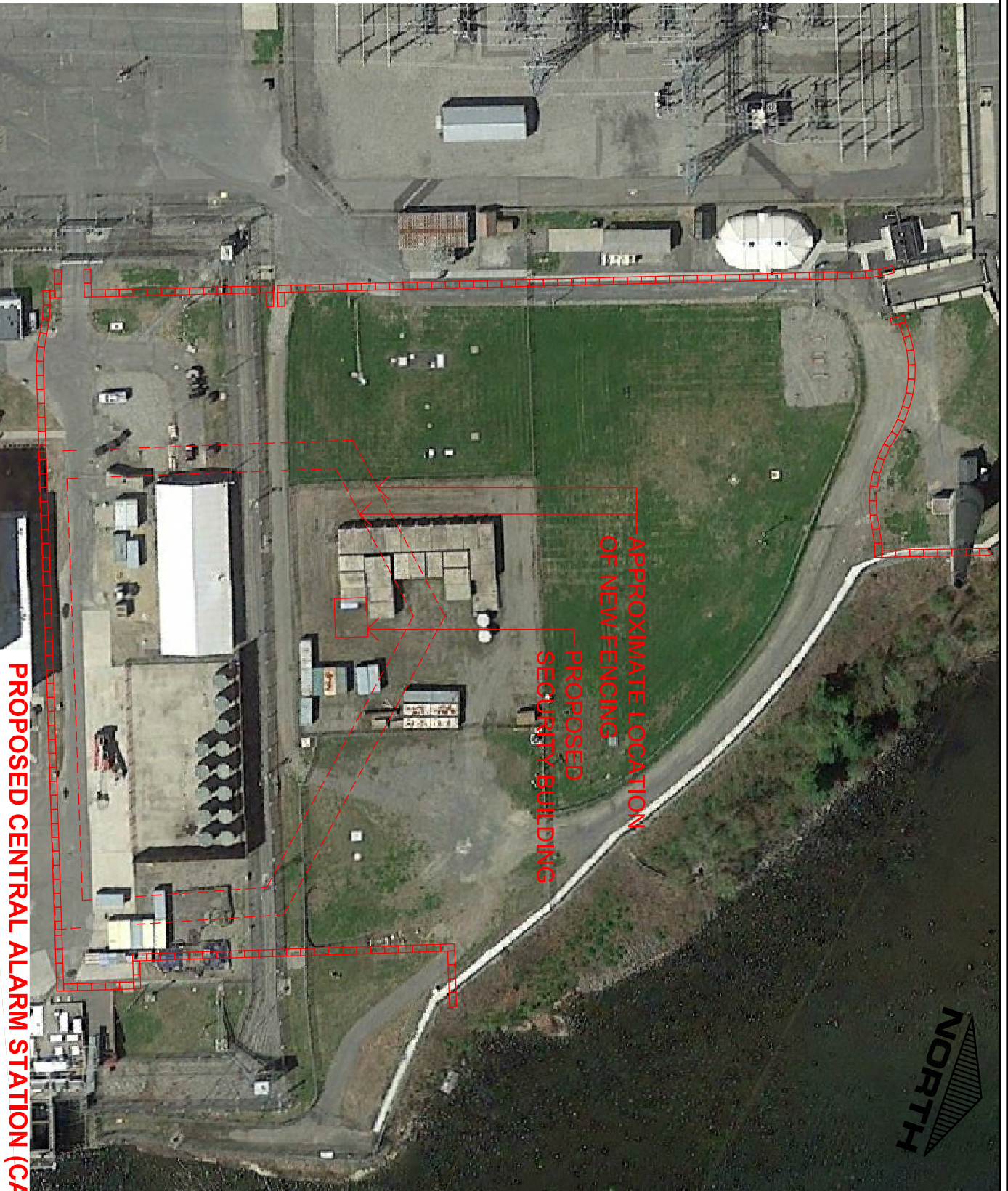
NOTES

Map created using ANR's Natural Resources Atlas

DISCLAIMER: This map is for general reference only. Data layers that appear on this map may or may not be accurate, current, or otherwise reliable. ANR and the State of Vermont make no representations of any kind, including but not limited to, the warranties of merchantability, or fitness for a particular use, nor are any such warranties to be implied with respect to the data on this map. THIS MAP IS NOT TO BE USED FOR NAVIGATION

567.0 0 284.00 567.0 Meters  
WGS\_1984\_Web\_Mercator\_Auxiliary\_Sphere  
© Vermont Agency of Natural Resources. June 15, 2017





APPROXIMATE LOCATION  
OF NEW FENCING

PROPOSED  
SECURITY BUILDING

PROPOSED CENTRAL ALARM STATION (CAS) BUILDING  
SKETCH PLAN ON 2014 GOOGLE EARTH IMAGE