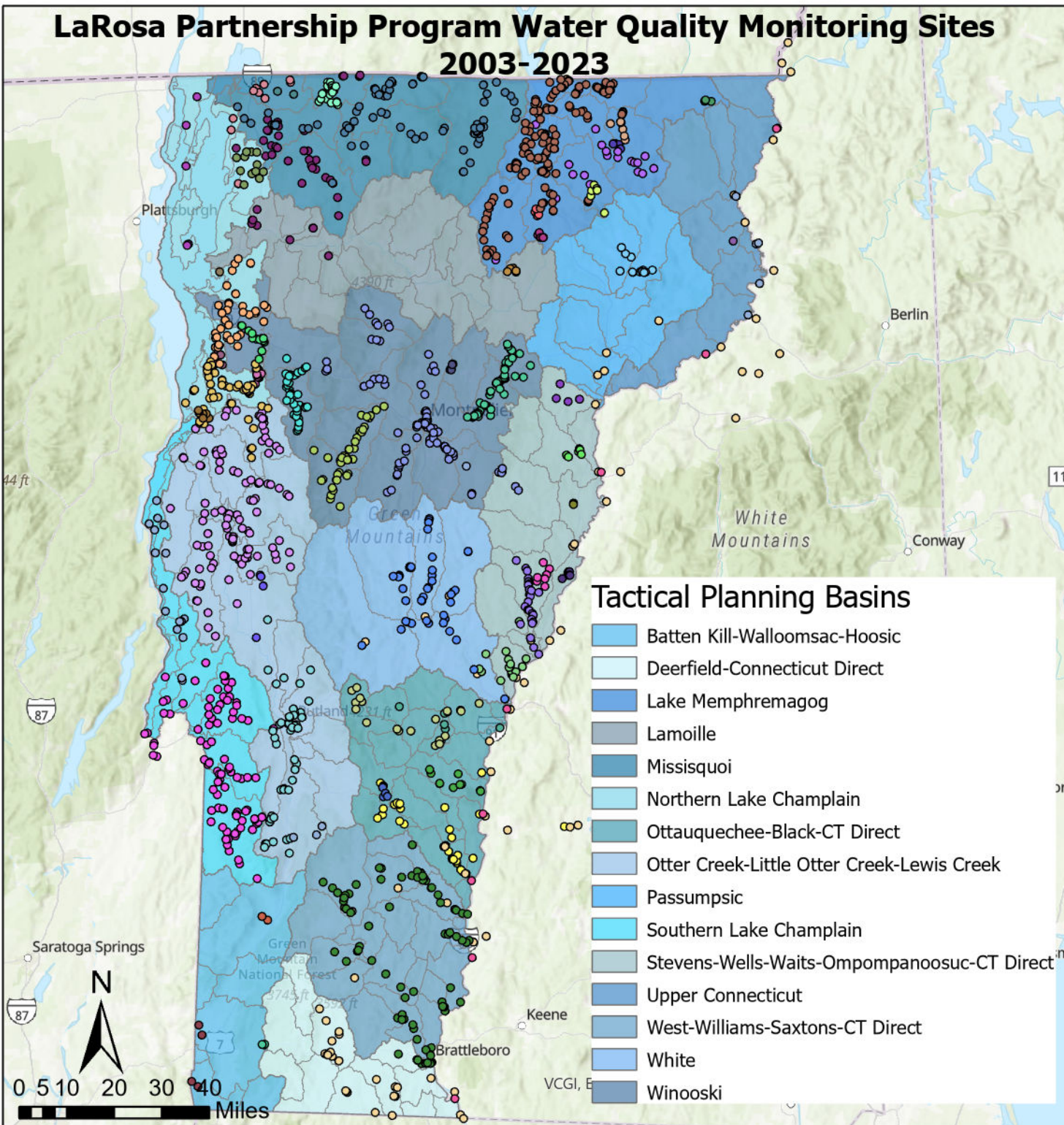


LaRosa Partnership Program Water Quality Monitoring Sites

2003-2023



Tactical Planning Basins

- Batten Kill-Walloomsac-Hoosic
- Deerfield-Connecticut Direct
- Lake Memphremagog
- Lamoille
- Missisquoi
- Northern Lake Champlain
- Ottauquechee-Black-CT Direct
- Otter Creek-Little Otter Creek-Lewis Creek
- Passumpsic
- Southern Lake Champlain
- Stevens-Wells-Waits-Ompompanoosuc-CT Direct
- Upper Connecticut
- West-Williams-Saxtons-CT Direct
- White
- Winooski

Sampling Organization

- Addison County River Watch Collaborative
- Averill Lakes Association (Little Averill Lake)
- Bennington County Conservation District
- Black River Action Team
- Burke Conservation Commission
- Calais Conservation Commission
- Caledonia County NRCD (Ticklenaked Pond)
- Connecticut River Conservancy
- Connecticut River Joint Commission
- Echo Lake Protective Association
- Essex Waterways Association
- Franklin County NRCD
- Franklin Watershed Committee
- Friends of Missisquoi Bay (Rock River)
- Friends of Northern Lake Champlain
- Friends of the Mad River
- Friends of the Winooski River (Four Rivers Partnership)
- Grand Isle NRCD
- Greensboro Association (Caspian Lake)
- Halls Lake Association
- Hoosic River Watershed Association
- Huntington River Conservation Partnership
- LaPlatte River Watershed Partnership
- Lake Dunmore Fern Lake Association
- Lake Fairlee Association
- Lake Iroquois Association
- Lake Morey Foundation
- Lake Parker Association
- Lake Rescue Association
- Maidstone Lake Association
- Missisquoi River Basin Association
- Northwoods Stewardship Center
- Norwich Conservation Commission
- Ompompanoosuc Watershed Council (White River NRCD)
- Orleans County NRCD (Memphremagog Watershed Association)
- Ottauquechee NRCD
- Ottauquechee NRCD (Ottauquechee River Group)
- Ottauquechee River Group
- Poultney Mettowee NRCD
- Rethink Runoff Stream Team (Winooski NRCD)
- Rutland Conservation Commission
- Seymour Lake Association
- Shadow Lake Association
- South Chittenden River Watch (LaPlatte Watershed Partnership)
- Southeastern Vermont Watershed Alliance (Connecticut River Conservancy)
- St. Albans Bay Association
- Stevens River Watershed Council
- Thorp Brook Association
- Upper Winooski Joint Conservation Commission (Winooski Headwaters)
- VTDEC Basin Planners
- Westmore Association (Lake Willoughby)
- White River Partnership
- Williston Conservation Commission