



Vermont Department of Environmental Conservation

Watershed Management Division
One National Life Drive, Main Building, 2nd Floor
Montpelier, VT 05602-3522

Agency of Natural Resources

Phone: 802-490-6100
Fax: 802-828-1544

**NOTICE OF WETLAND DETERMINATION #2016-417
January 5, 2017**

A request for a Wetland Determination, pursuant to the provisions of Section 8 of the Vermont Wetland Rules, has been received by Barrett Park, LLC.

The wetland is located between 60 and 62 Barrett St. on the north side, in South Burlington, Vermont, and is a 0.4-acre shrub swamp within an isolated, shallow topographic depression. The functions and values of the wetland have been evaluated and field verified by the Agency of Natural Resources. In accordance with Section 8.3 of the Vermont Wetland Rules, the Agency proposes to reclassify a Class II to a Class III wetland.

A copy of the draft determination and map is available for review at the Vermont Wetlands Office in Montpelier and may be found online at <http://dec.vermont.gov/watershed/permits/public-notices/wetlands-public-notices>. This notice provides at least thirty (30) days in which to file written comments or to request that the Secretary hold a public meeting on the proposed determination. Comments regarding the Wetland Determination must be limited to a discussion of the functions and values of the wetland as described in Section 5 of the Vermont Wetland Rules, a copy of which can be found online at: <http://dec.vermont.gov/watershed/wetlands/jurisdictional/rules#Section5>

Any person may file comments in writing on this determination by referencing project #2006-312 through **February 3, 2017** and sending them to:

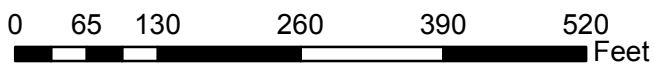
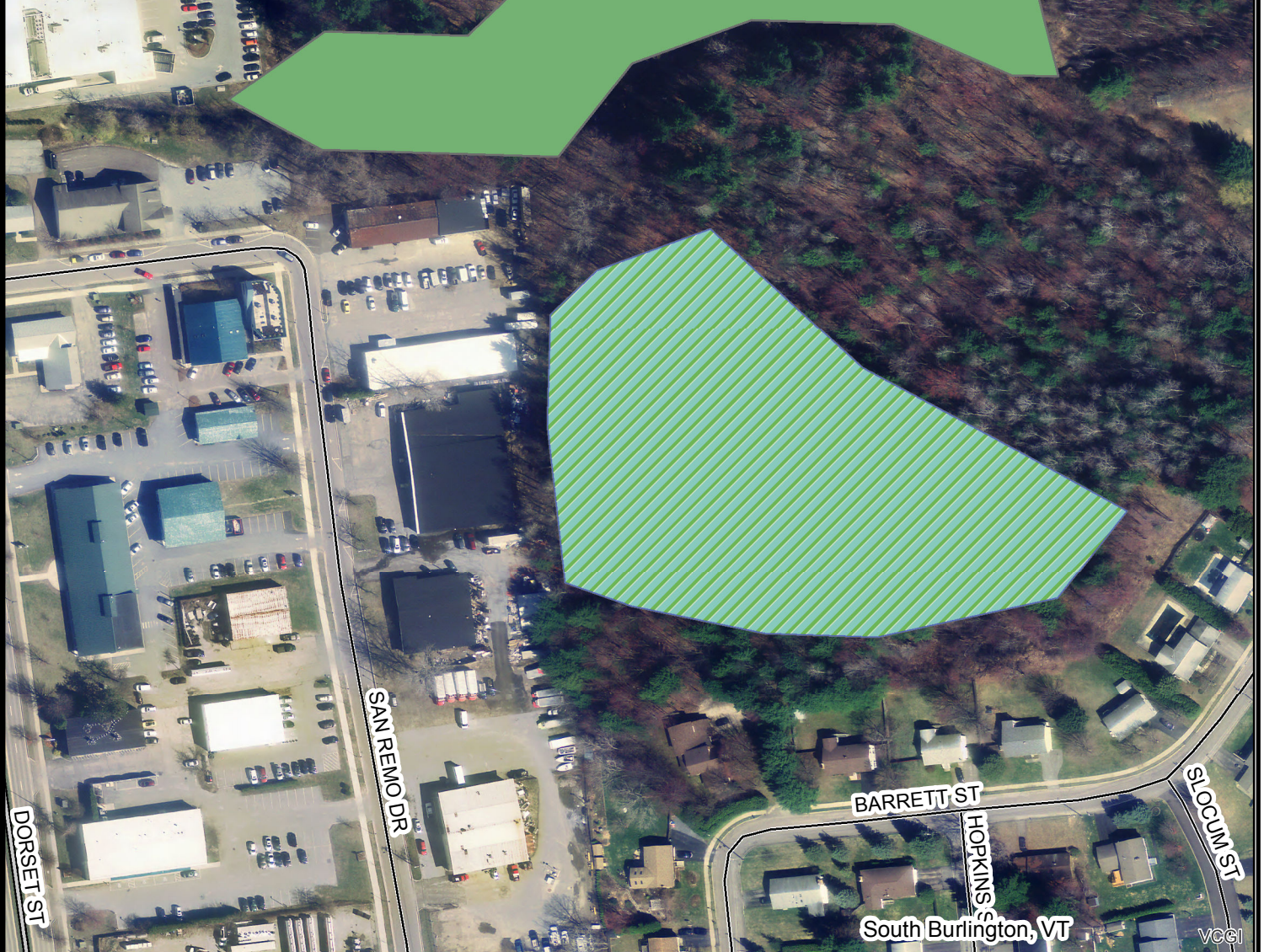
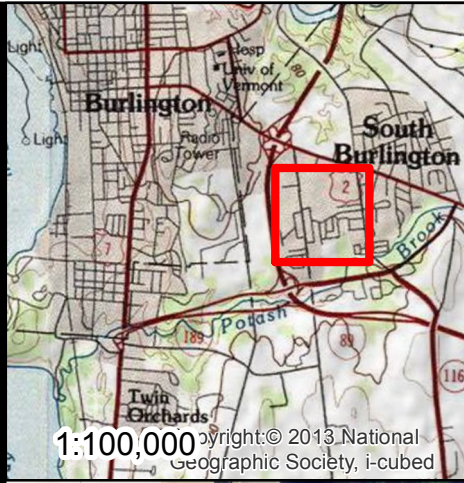
Watershed Management Division
Attn: Wetlands Program
Department of Environmental Conservation
One National Life Drive
Main Building, 2nd Floor
Montpelier, VT 05620-3522

Or to:

ANR.WSMDWetlands@vermont.gov

Enclosure

cc: Distribution List



**Potential VSWI Map Change
Project #2016-417**
Cartographer: L. Woods
Date: December 19, 2016

Legend	
	Pending Class II to Class III Wetland
	Mapped Class II Wetland
	Class 2 Town Road
	Class 3 Town Road