



Vermont Department of Environmental Conservation

Watershed Management Division
One National Life Drive, Main Building, 2nd Floor
Montpelier, VT 05602-3522

Agency of Natural Resources

Phone: 802-490-6100
Fax: 802-828-1544

**NOTICE OF WETLAND DETERMINATION #2006-312
December 15, 2016**

A request for a Wetland Determination, pursuant to the provisions of Section 8 of the Vermont Wetland Rules, has been received by Pat & Linda Mahoney.

The wetland is located at 60 Petty Brook Rd, in Milton, Vermont, and is in an existing sloping swale with a few cat tails and grass and receives most of its water from runoff. A seep on the embankment to the west does provide flow when water is present. The functions and values of the wetland have been evaluated and field verified by the Agency of Natural Resources. In accordance with Section 8.3 of the Vermont Wetland Rules, the Agency proposes to reclassify a Class II to a Class III wetland.

A copy of the draft determination and map is available for review at the Vermont Wetlands Office in Montpelier and may be found online at <http://dec.vermont.gov/watershed/permits/public-notices/wetlands-public-notices>. This notice provides at least thirty (30) days in which to file written comments or to request that the Secretary hold a public meeting on the proposed determination. Comments regarding the Wetland Determination must be limited to a discussion of the functions and values of the wetland as described in Section 5 of the Vermont Wetland Rules, a copy of which can be found online at: <http://dec.vermont.gov/watershed/wetlands/jurisdictional/rules#Section5>

Any person may file comments in writing on this determination by referencing project #2006-312 through **January 13, 2017** and sending them to:

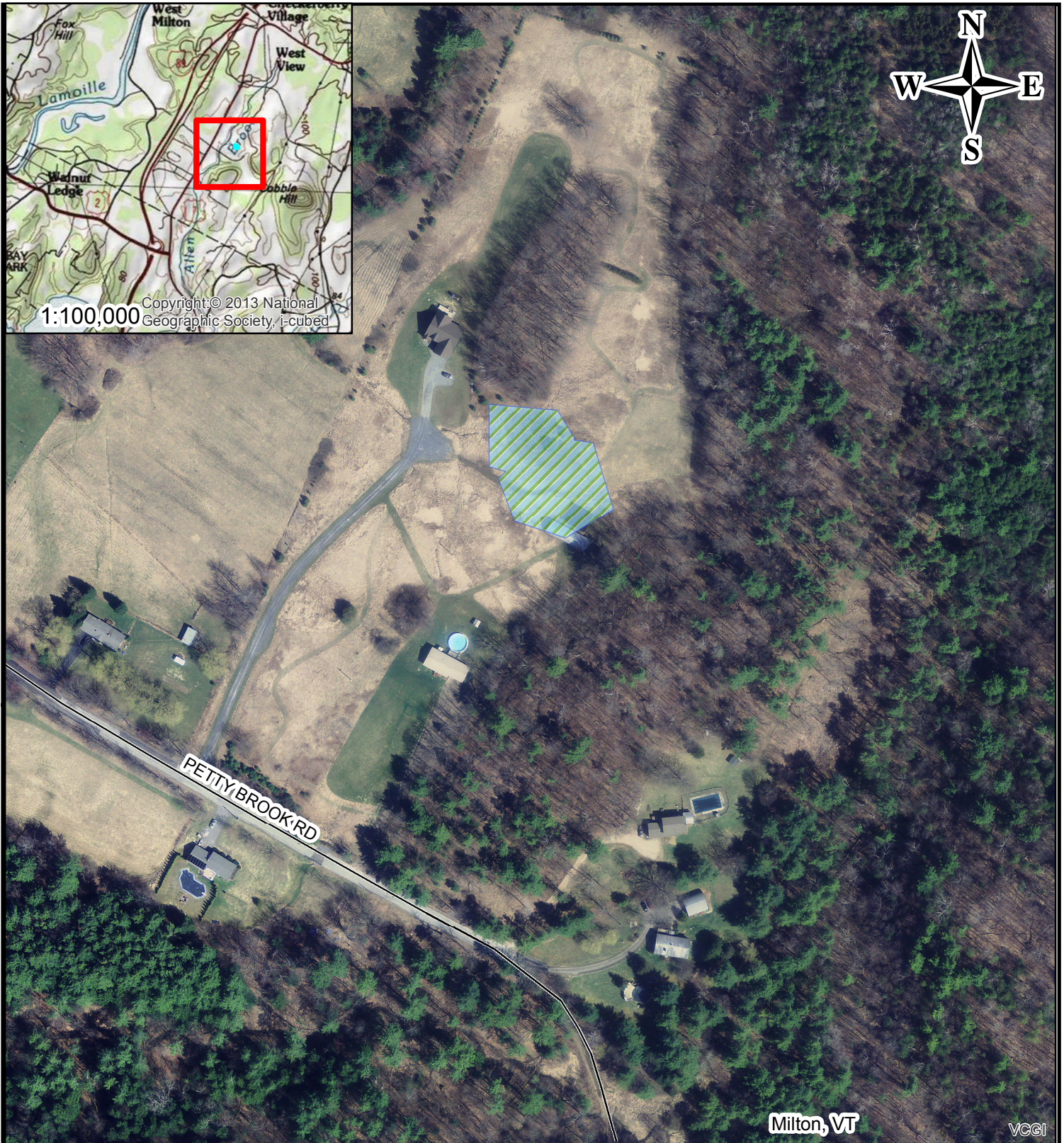
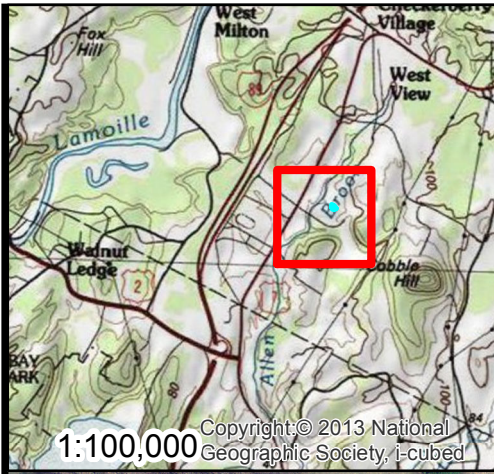
Watershed Management Division
Attn: Wetlands Program
Department of Environmental Conservation
One National Life Drive
Main Building, 2nd Floor
Montpelier, VT 05620-3522

Or to:

ANR.WSMDWetlands@vermont.gov

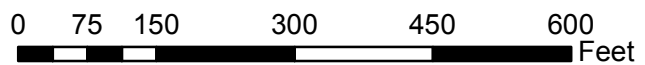
Enclosure

cc: Distribution List


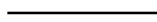



Milton, VT

VCCI



**Potential VSWI Map Change
Project #2006-312**
Cartographer: L. Woods
Date: December 1, 2016

Legend	
	Pending Class III Wetland
	Class 3 Town Road
	Class 4 Town Road