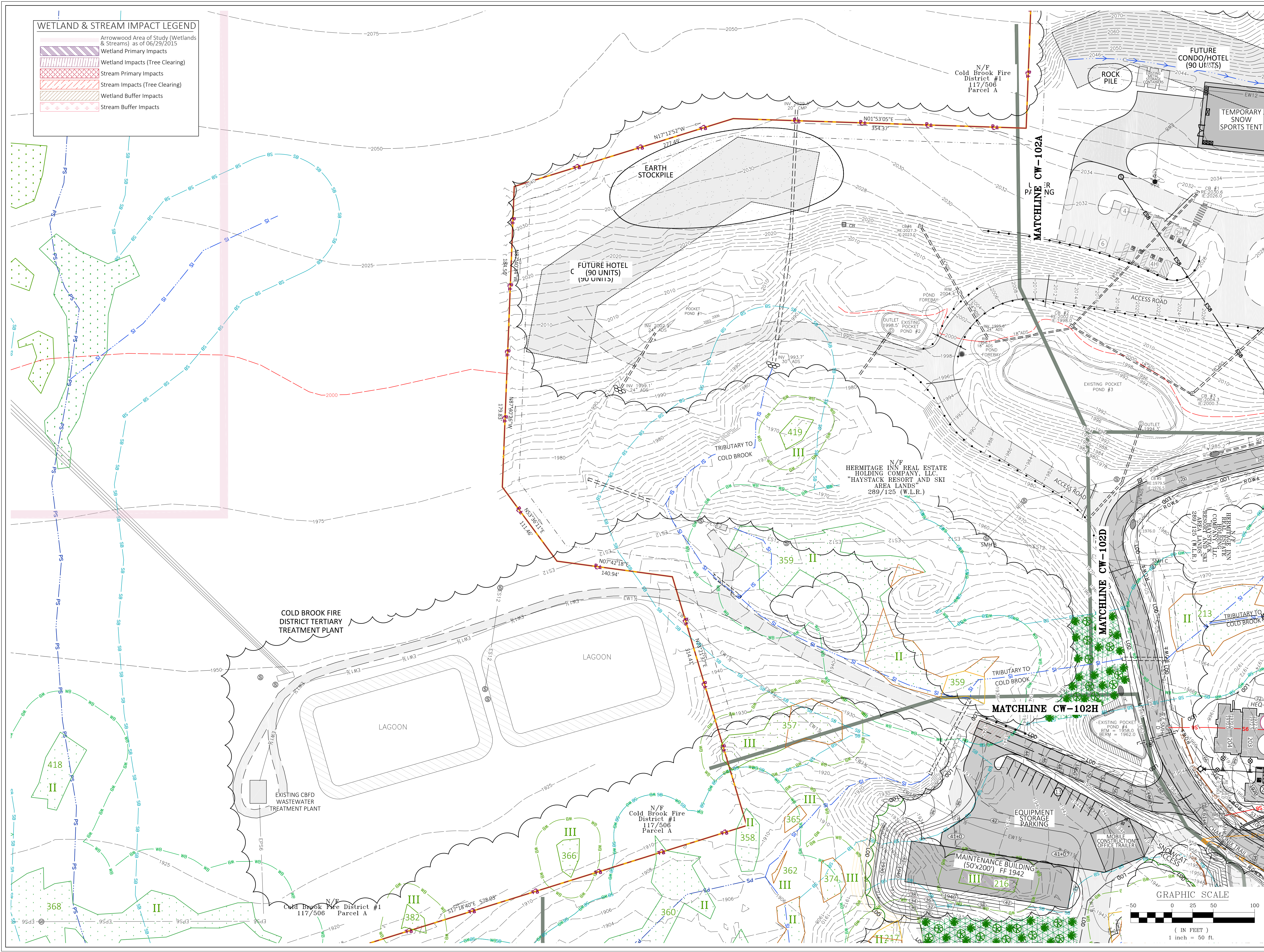


WETLAND & STREAM IMPACT LEGEND	
	Arrowwood Area of Study (Wetlands & Streams) as of 06/29/2015
	Wetland Primary Impacts
	Wetland Impacts (Tree Clearing)
	Stream Primary Impacts
	Stream Impacts (Tree Clearing)
	Wetland Buffer Impacts
	Stream Buffer Impacts



Hermitage Inn Real Estate Holding Company, LLC
 Developer
 P.O. Box 2210
 West Dover, VT 05356
 (860) 466-7606

Harrington Engineering, Inc.
 Act 250 and Permit Specialist
 Civil and Environmental Engineering
 P.O. Box 248
 North Pomfret, VT 05053
 (802) 457-3151

Joyce Land Surveying Corp.
 P.O. Box 115, 3 East Main Street
 Wilmington, VT 05363
 (802) 464-1244

Conley Associates
 Traffic Engineer
 349 Lakewood Drive
 Killington, VT 05751
 (802) 345-2321

Landvest
 Growth Impact Analyst
 Four the Green
 Woodstock, VT 05091

Arrowwood Environmental
 Ecologist / Botanist, Wetlands Biologist
 950 Bert White Road
 Huntington, VT 05462
 (802) 434-7276

FILE NAME:	REVISIONS:
Wetlands_MTN	11/12/13 REVIEW
DRAWN BY: PGJ	02/21/14 REVIEW
CHECKED BY: RSH	04/21/14 REVIEW
DATE: 10/16/2013	09/25/14 REVIEW
SCALE: 1" = 50'	10/30/14 REVIEW
APPROVED:	02/02/15 REVIEW
	05/07/15 REVIEW
	06/13/15 REVIEW
	07/17/15 REVIEW
	11/07/16 REVIEW
	09/25/15 REVIEW
	11/07/16 REVIEW

EXISTING LEGEND	
	Wetland Boundary
	Stream Buffer (75' unless field located)
	Intermittent Stream / Ditch
	Perennial Stream / Ditch
	Unassessed Stream / Ditch
	Top of Bank
	Ordinary High Water (Approximate)
	Right-Of-Way
	Property Line
	Hermitage Owned Property
	Tree Line
	Building
	Road / Drive / Parking / Trail
	Fence
	Stone / Retaining Wall
	Culvert
	Water Line (size as indicated)
	6" Fire Hydrant w/Valve
	Overhead Power w/ Pole & Guy
	Sewer Main / Manhole (size as indicated)

PROPOSED LEGEND	
	Contours
	Top/Toe of Slope
	Building / Envelope
	Road / Drive / Parking / Trail
	Tree Line (LOD)
	Grass Ditch / Swale
	Stone Ditch / Swale
	Water Line w/ valve (size as indicated)
	6" Fire Hydrant w/Valve
	Gravity Sewer Connection (PVC SDR 35) w/ Cleanout (Size as indicated)
	Gravity Sewer Line (PVC SDR 35) w/ Manhole (Size as indicated)
	Pressure Sewer Force Main (Size as indicated)
	Precast Catch Basin (48" w/ ADS Pipe (Size as indicated)
	Top of Berm (Pond & Forebay)
	Level Spreader
	Limit of Disturbance (future Utilities)
	Open Bottom Arch Culvert (size as indicated)
	Proposed Tree Planting Areas

PROJECT:
HAYSTACK MOUNTAIN

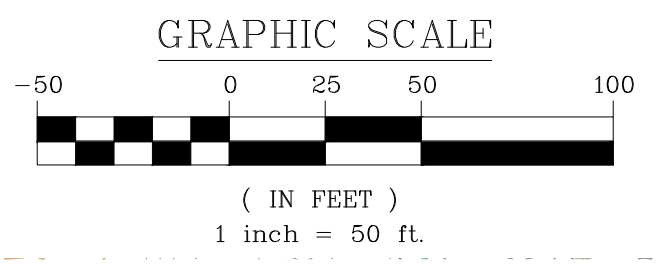
SHEET TITLE:
WETLAND IMPACTS - FUTURE HOTELS

November 2016

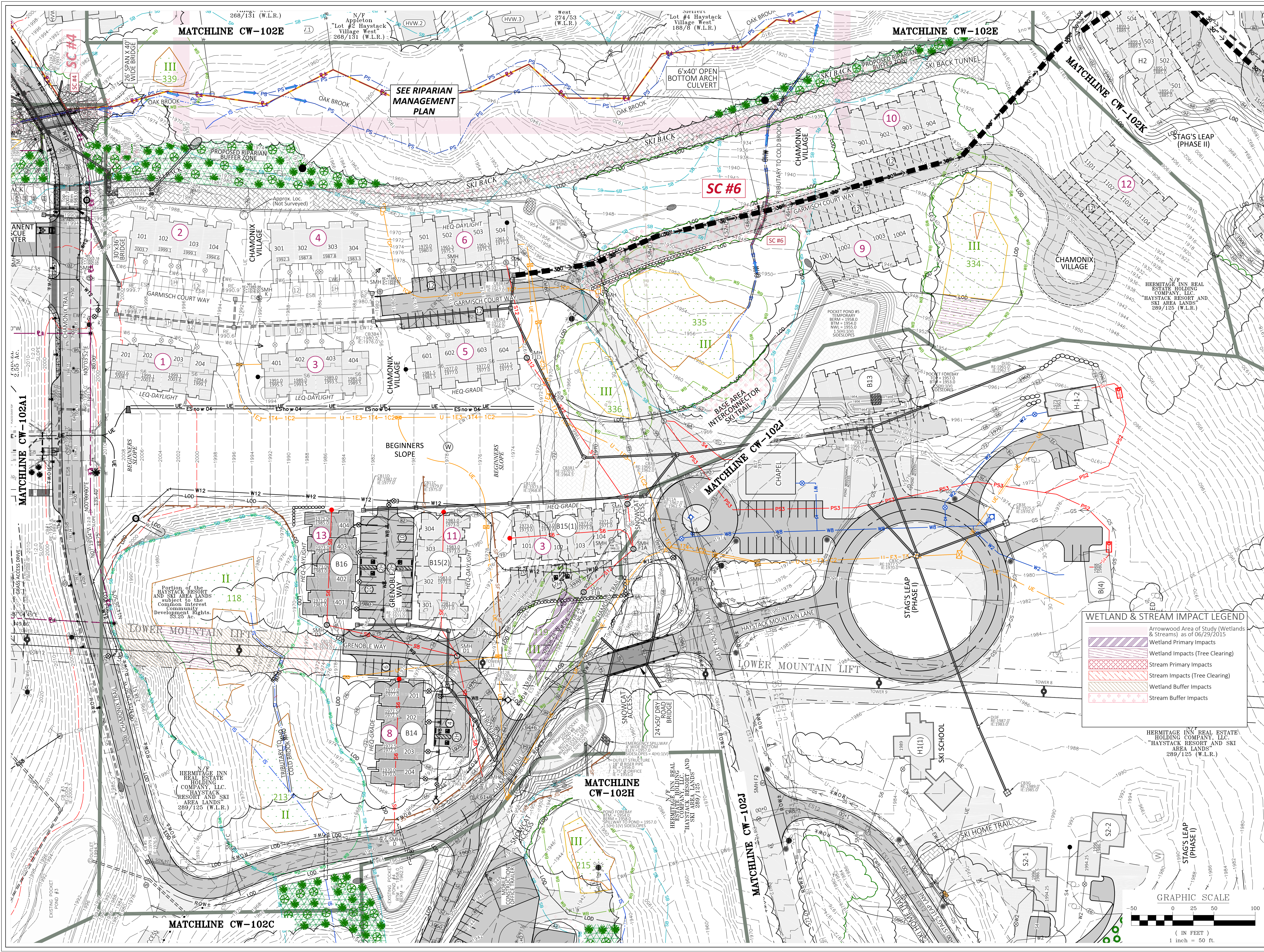
CW-102C

NORTH
 VT STATE PLANE GRID

SHEET



C:\Users\Patrick\Documents\Harrington\Projects\Haystack\Wetlands\MTN.dwg, CW-102C, 11/17/2016 11:37:12 AM



Hermitage Inn Real Estate Holding Company, LLC
 Developer
 P.O. Box 2210
 West Dover, VT 05356
 (860) 466-7606
 Harrington Engineering, Inc.
 Act 250 and Permit Specialist
 Civil and Environmental Engineering
 P.O. Box 248
 North Pomfret, VT 05053
 (802) 457-3151
 Joyce Land Surveying Corp.
 P.O. Box 115, 3 East Main Street
 Wilmington, VT 05363
 (802) 464-1244
 Conley Associates
 Traffic Engineer
 349 Lakewood Drive
 Killington, VT 05751
 (802) 345-2321
 Landvest
 Growth Impact Analyst
 Four The Green
 Woodstock, VT 05091
 Arrowwood Environmental
 Ecologist / Botanist, Wetlands Biologist
 950 Bert White Road
 Huntington, VT 05462
 (802) 434-7276

FILE NAME:	REVISIONS:
Wetlands_MTN	11/12/13 REVIEW COMMENTS
DRAWN BY: PGJ	02/21/14 REVIEW COMMENTS
CHECKED BY: RSH	04/21/14 REVIEW COMMENTS
DATE: 10/16/2013	09/25/14 REVIEW COMMENTS
SCALE: 1" = 50'	10/30/14 REVIEW COMMENTS
APPROVED:	02/02/15 REVIEW COMMENTS
	06/15/15 REVIEW COMMENTS
	05/07/15 REVIEW COMMENTS
	10/10/14 REVIEW COMMENTS
	10/01/15 REVIEW COMMENTS
	11/09/15 REVIEW COMMENTS
	07/11/16 Wetland 119
	11/07/16 REVIEW COMMENTS

EXISTING LEGEND	
111-111-111	Existing Contours
111-111-111	Wetland Boundary (Class II & III)
111-111-111	Wetland Buffer (50' Class II, 25' Class III)
111-111-111	Stream Buffer (75' unless field located)
111-111-111	River / Stream / Water Body
111-111-111	Intermittent Stream / Ditch
111-111-111	Perennial Stream / Ditch
111-111-111	Unassessed Stream / Ditch
111-111-111	Top of Embankment / Road
111-111-111	Ordinary High Water (Approximate)
111-111-111	Right-Of-Way
111-111-111	Property Line
111-111-111	Hermitage Owned Property
111-111-111	Tree Line
111-111-111	Building
111-111-111	Road / Drive / Parking / Trail
111-111-111	Fence
111-111-111	Stone / Retaining Wall
111-111-111	Drilled Bedrock Well
111-111-111	Water Line (size as indicated)
111-111-111	6" Fire Hydrant w/Valve
111-111-111	Overhead Power w/ Pole & Guy
111-111-111	Snow Gun
111-111-111	Sewer Main / Manhole (size as indicated)
111-111-111	Pressure Sewer (size as indicated)
111-111-111	Snowblowing Line (size as indicated)

PROPOSED LEGEND	
111-111-111	Contours
111-111-111	Top/Tee of Slope
111-111-111	Building / Envelope
111-111-111	Road / Drive / Parking / Trail
111-111-111	Tree Line (LOD)
111-111-111	Grass Ditch / Swale
111-111-111	Stone Ditch / Swale
111-111-111	Stone / Retaining Wall
111-111-111	Water Line w/ valve (size as indicated)
111-111-111	6" Fire Hydrant w/Valve
111-111-111	Gravity Sewer Connection (PVC SDR 35) w/ Cleanout (Size as indicated)
111-111-111	Gravity Sewer Line (PVC SDR 35) w/ Manhole (Size as indicated)
111-111-111	Pressure Sewer Force Main (Size as indicated)
111-111-111	Precast Catch Basin (48" w/ ADS Pipe (size as indicated)
111-111-111	Future Stormwater Pipe (size as indicated)
111-111-111	Top of Berm (Road & Forebay)
111-111-111	Level Spreader
111-111-111	Limit of Disturbance (Future Utilities)
111-111-111	Open Bottom Arch Culvert (size as indicated)
111-111-111	Proposed Tree Planting Areas

WETLAND & STREAM IMPACT LEGEND	
111-111-111	Arrowwood Area of Study (Wetlands & Streams) as of 06/29/2015
111-111-111	Wetland Primary Impacts
111-111-111	Wetland Impacts (Tree Clearing)
111-111-111	Stream Primary Impacts
111-111-111	Stream Impacts (Tree Clearing)
111-111-111	Wetland Buffer Impacts
111-111-111	Stream Buffer Impacts

HERMITAGE INN REAL ESTATE HOLDING COMPANY, LLC
 "HAYSTACK RESORT AND SKI AREA LANDS" 289/125 (W.L.R.)

PROJECT:
HAYSTACK MOUNTAIN
SHEET TITLE:
WETLAND IMPACTS - CHAMONIX VILLAGE
 November 2016
CW-102D
 SHEET

