

Wetland Symbols

ANR Class Determination

- Class 2
- Class 3
- Presumptive Class 2

Amphibian Habitat

- Wetlands prov. Amph. Habitat
- Confirmed Vernal Pool

Mapping Accuracy

- Wetlands: unknown accuracy
- Wetlands: submeter
- Wetlands: map grade
- Class 2 Wetland Buffers

Other Symbols

- Existing Lift Lines
- Existing Streams (incomplete)
- Existing Buildings
- Existing Roads
- Non-Forested
- Conserved Land
- Deed Restricted Area
- Inholdings and Outside Ownership

Wildlife Symbols

- BSB Trees
- Bear-scarred Beech Stand
- 1/4 Mile Beech Stand Buffer
- Deer Winter Area
- DWA Buffer
- Wildlife Corridor
- 3000' Elevation Line

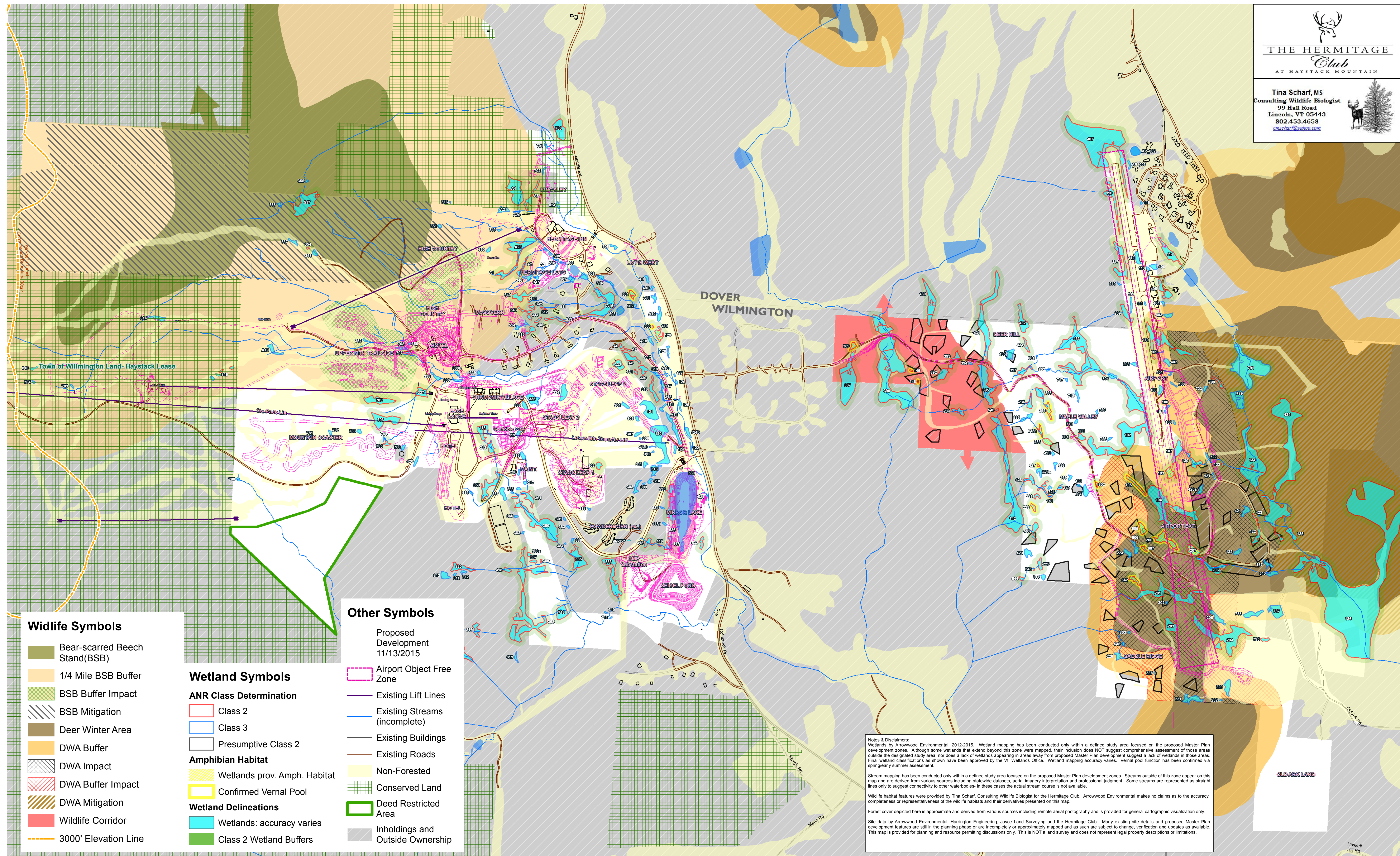
Notes & Disclaimers:
 Wetlands by Arrowwood Environmental, 2012-2014. Wetland mapping has been conducted only within a defined study area focused on the proposed Master Plan development zones. Although some wetlands that extend beyond this zone were mapped, their inclusion does NOT suggest comprehensive assessment of those areas outside the designated study area, nor does a lack of wetlands appearing in areas away from proposed Master Plan development suggest a lack of wetlands in those areas. Final wetland classification by the VT Wetlands Office is ongoing; this is not a final classification map. Wetland mapping accuracy varies and is indicated on this map by color-see legend. Submeter accuracy refers to boundary survey by sub-meter grade GPS equipment. Map grade refers to collection with professional GPS without specific accuracy claims. Vernal pool function subject to field review during spring/early summer.

Stream mapping has been conducted only within a defined study area focused on the proposed Master Plan development zones. Streams outside of this zone appear on this map and are derived from various sources including statewide datasets, aerial imagery interpretation and professional judgment. Some streams are represented as straight lines only to suggest connectivity to other waterbodies - in these cases the actual stream course is not available.

Wildlife habitat features were provided by Tina Scharf, Consulting Wildlife Biologist for the Hermitage Club. Arrowwood Environmental makes no claims as to the accuracy, completeness or representativeness of the wildlife habitats and their derivatives presented on this map.

Forest cover depicted here is approximate and derived from various sources including remote aerial photography and is provided for general cartographic visualization only.

Site data by Arrowwood Environmental, Harrington Engineering, Joyce Land Surveying and the Hermitage Club. Many existing site details and proposed Master Plan development features are still in the planning phase or are incompletely or approximately mapped and as such are subject to change, verification and updates as available. This map is provided for planning and resource permitting discussions only. This is NOT a land survey and does not represent legal property descriptions or limitations.



Wildlife Symbols

- Bear-scarred Beech Stand(BSB)
- 1/4 Mile BSB Buffer
- BSB Buffer Impact
- BSB Mitigation
- Deer Winter Area
- DWA Buffer
- DWA Impact
- DWA Buffer Impact
- DWA Mitigation
- Wildlife Corridor
- 3000' Elevation Line

Wetland Symbols

ANR Class Determination

- Class 2
- Class 3
- Presumptive Class 2

Amphibian Habitat

- Wetlands prov. Amph. Habitat
- Confirmed Vernal Pool

Wetland Delineations

- Wetlands: accuracy varies
- Class 2 Wetland Buffers

Other Symbols

- Proposed Development 11/13/2015
- Airport Object Free Zone
- Existing Lift Lines
- Existing Streams (incomplete)
- Existing Buildings
- Existing Roads
- Non-Forested
- Conserved Land
- Deed Restricted Area
- Inholdings and Outside Ownership

Notes & Disclaimers:

Wetlands by Arrowwood Environmental, 2012-2015. Wetland mapping has been conducted only within a defined study area focused on the proposed Master Plan development zones. Although some wetlands that extend beyond this zone were mapped, their inclusion does NOT suggest comprehensive assessment of those areas outside the designated study area, nor does a lack of wetlands appearing in areas away from proposed Master Plan development suggest a lack of wetlands in those areas. Final wetland classifications as shown have been approved by the VT. Wetlands Office. Wetland mapping accuracy varies. Vernal pool function has been confirmed via spring/early summer assessment.

Stream mapping has been conducted only within a defined study area focused on the proposed Master Plan development zones. Streams outside of this zone appear on this map and are derived from various sources including statewide datasets, aerial imagery interpretation and professional judgment. Some streams are represented as straight lines only to suggest connectivity to other waterbodies - in these cases the actual stream course is not available.

Wildlife habitat features were provided by Tina Scharf, Consulting Wildlife Biologist for the Hermitage Club. Arrowwood Environmental makes no claims as to the accuracy, completeness or representativeness of the wildlife habitats and their derivatives presented on this map.

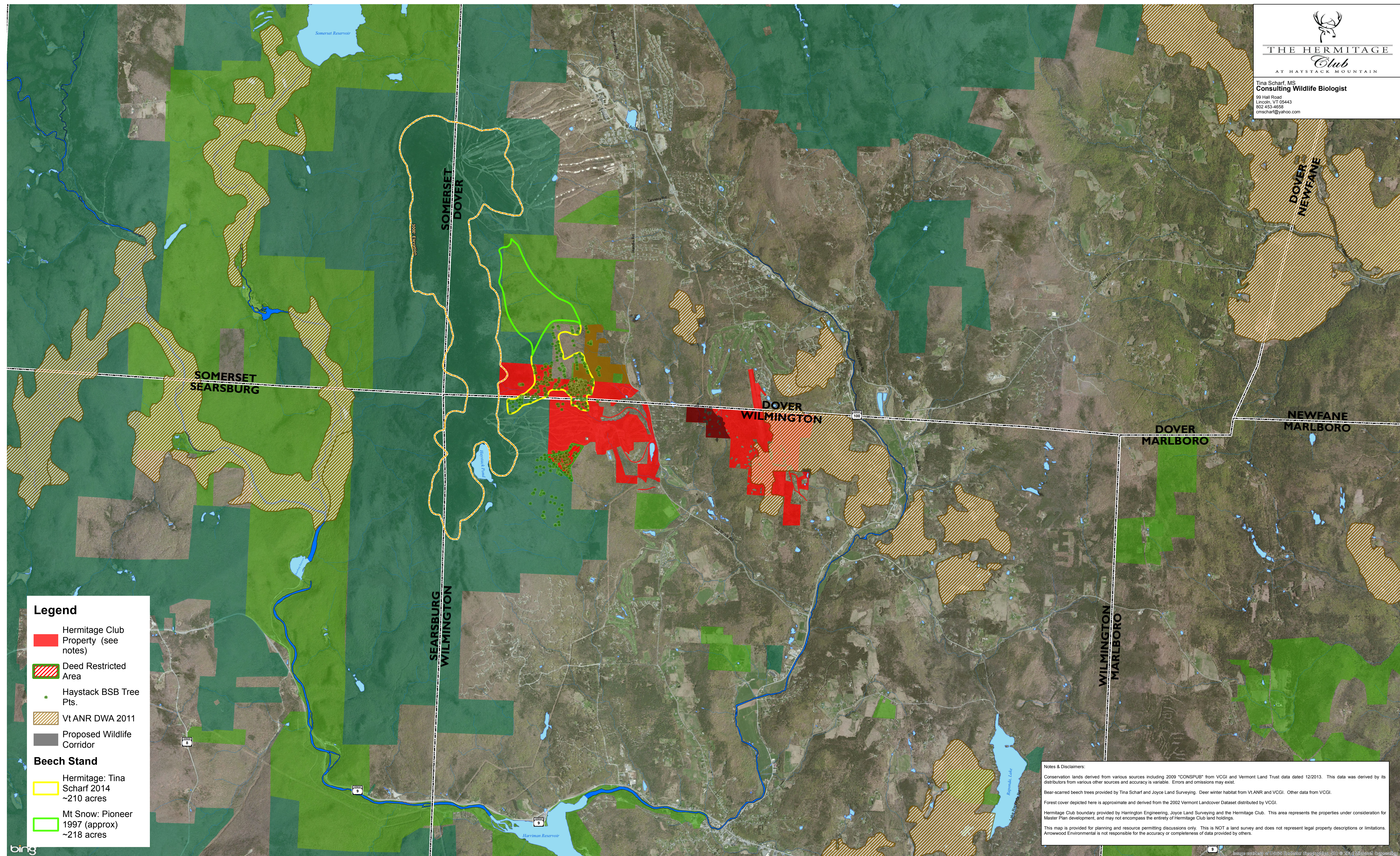
Forest cover depicted here is approximate and derived from various sources including remote aerial photography and is provided for general cartographic visualization only.

Site data by Arrowwood Environmental, Harrington Engineering, Joyce Land Surveying and the Hermitage Club. Many existing site details and proposed Master Plan development features are still in the planning phase or are incompletely or approximately mapped and as such are subject to change, verification and updates as available. This map is provided for planning and resource permitting discussions only. This is NOT a land survey and does not represent legal property descriptions or limitations.



THE HERMITAGE
Club
AT HAYSTACK MOUNTAIN

Tina Scharf, MS
Consulting Wildlife Biologist
89 Hall Road
Lincoln, VT 05443
802 453-4658
tmscharf@yahoo.com



Legend

- Hermitage Club Property (see notes)
- Deed Restricted Area
- Haystack BSB Tree Pts.
- Vt ANR DWA 2011
- Proposed Wildlife Corridor

Beech Stand

- Hermitage: Tina Scharf 2014 ~210 acres
- Mt Snow: Pioneer 1997 (approx) ~218 acres

Notes & Disclaimers:
 Conservation lands derived from various sources including 2009 "CONSPUB" from VCGI and Vermont Land Trust data dated 12/2013. This data was derived by its distributors from various other sources and accuracy is variable. Errors and omissions may exist.
 Bear-scarred beech trees provided by Tina Scharf and Joyce Land Surveying. Deer winter habitat from VtANR and VCGI. Other data from VCGI.
 Forest cover depicted here is approximate and derived from the 2002 Vermont Landcover Dataset distributed by VCGI.
 Hermitage Club boundary provided by Harrington Engineering, Joyce Land Surveying and the Hermitage Club. This area represents the properties under consideration for Master Plan development, and may not encompass the entirety of Hermitage Club land holdings.
 This map is provided for planning and resource permitting discussions only. This is NOT a land survey and does not represent legal property descriptions or limitations. Arrowwood Environmental is not responsible for the accuracy or completeness of data provided by others.

