

Notice of Application of Wetland Individual Permit: 2015-701
3/16/2016

A request for An Wetland Individual Permit, required pursuant to the provisions of Section 9 of the Vermont Wetland Rules has been received from Green Mountain Power Corporation c/o Timothy Upton.

Green Mountain Power Corporation c/o Timothy Upton is requesting approval for construction and operation of a planned extension to an existing electric distribution line located at to the south side of the road within approximately, in Shrewsbury, VT. The proposed project will impact 970 square feet of Class II wetland and 6887 square feet of Class II wetland buffer zone. This wetland has been designated as a significant (Class II) wetland under the Vermont Wetland Rules.

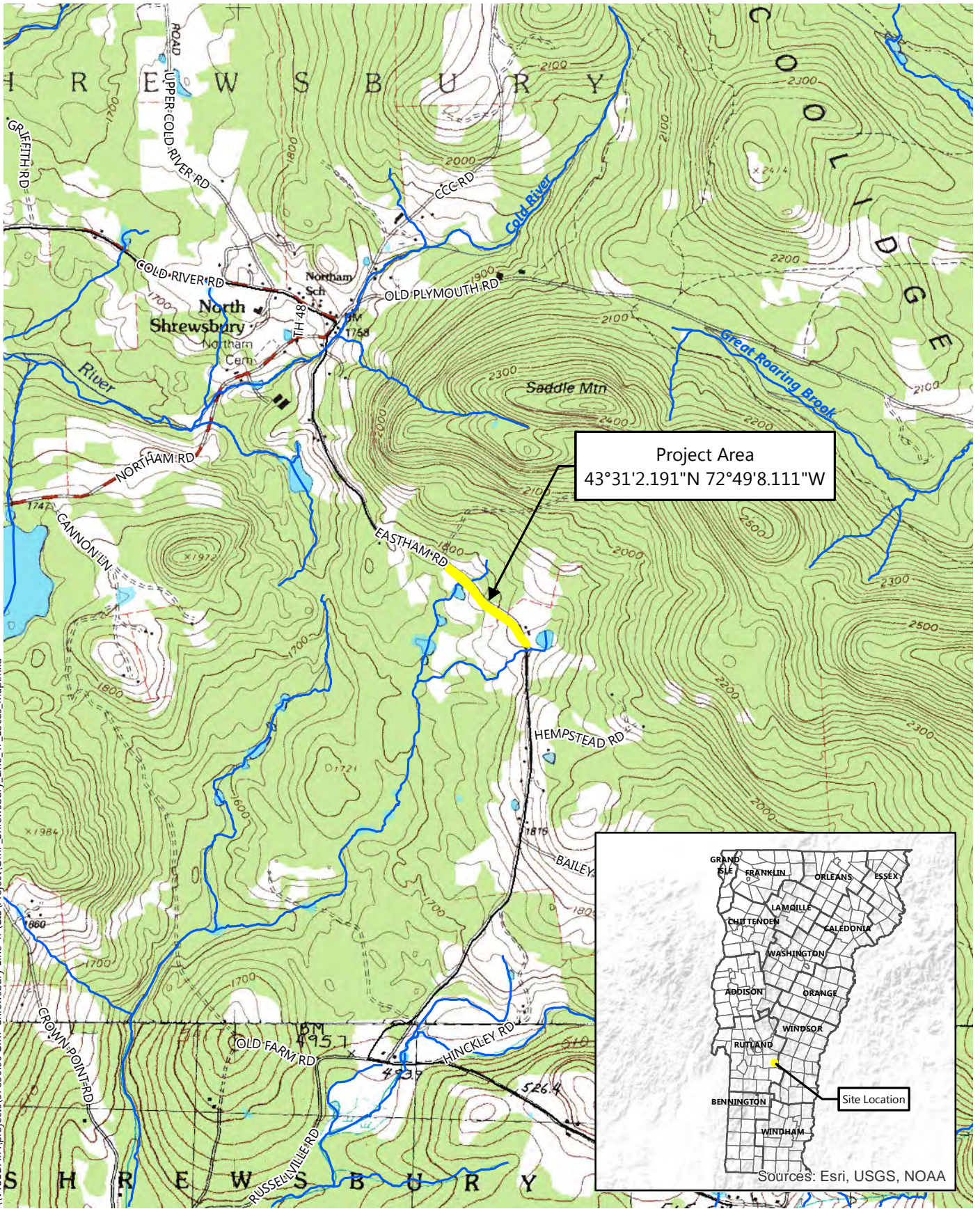
Copies of the application are available for review at the Vermont Wetlands Office in Montpelier, the Town Clerk's Office in Shrewsbury, the Regional Planning Commission office in Shrewsbury, and the Agency of Natural Resources website: <http://www.watershedmanagement.vt.gov/cfm/notices/info.cfm?id=9778> Individual Wetland Permits may only be approved if the Agency is satisfied that the applicant has demonstrated that the proposed use complies with the Vermont Wetland Rules and the proposed use will not have an undue adverse impact on the functions and values of any significant wetlands or their adjacent buffer zones. In making the determination that the applicant has met this burden, the Agency will evaluate the potential effects of the proposed use on the basis of (1) the use's direct and immediate effects on the wetland; and (2) the use's cumulative or on-going effects on the wetland.

Any person may file comments in writing by referencing Project 2015-701 through 3/30/2016 and sending them to:

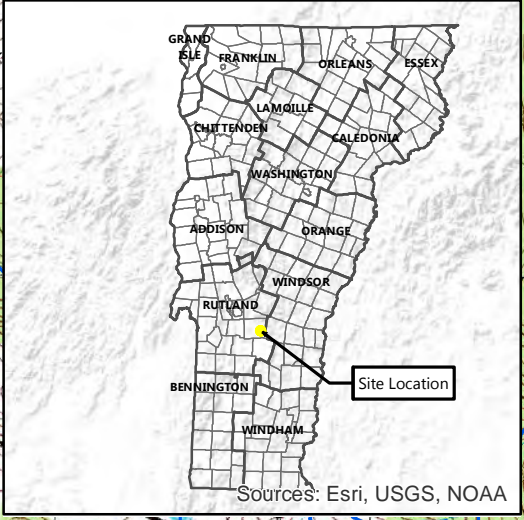
anr.wsmdwetlands@state.vt.us

**Watershed Management Division
Attn: Wetlands Program
Department of Environmental Conservation
One National Life Drive
Main Building, 2nd Floor
Montpelier, VT 05620-3522**

cc: Distribution List



\\VTSBDATA\projects\57830.00 GMP Shrewsbury Line 47\GIS\Project\GMP_Shrewsbury_Line_47_Locus_Map.mxd



Sources: Esri, USGS, NOAA



GMP Young Line Extension - Line 47 | Shrewsbury, VT

- Study Area (VHB)
- VHD Stream (VCGI)
- VHD Waterbody (VCGI)
- Interstate (VTrans)
- US Highway (VTrans)
- Vermont State Highway (VTrans)
- Town Road (VTrans)

Locus Map

Sources:
 USGS Topo Background (1996)
 VCGI (Vermont Center for Geographic Information - 2010)
 VTrans (Vermont Department of Transportation - 2015)
 VHB - 2015