

Notice of Application of Wetland Individual Permit: 2015-592
November 26, 2015

A request for An Wetland Individual Permit, required pursuant to the provisions of Section 9 of the Vermont Wetland Rules has been received from GS Precision, Inc.

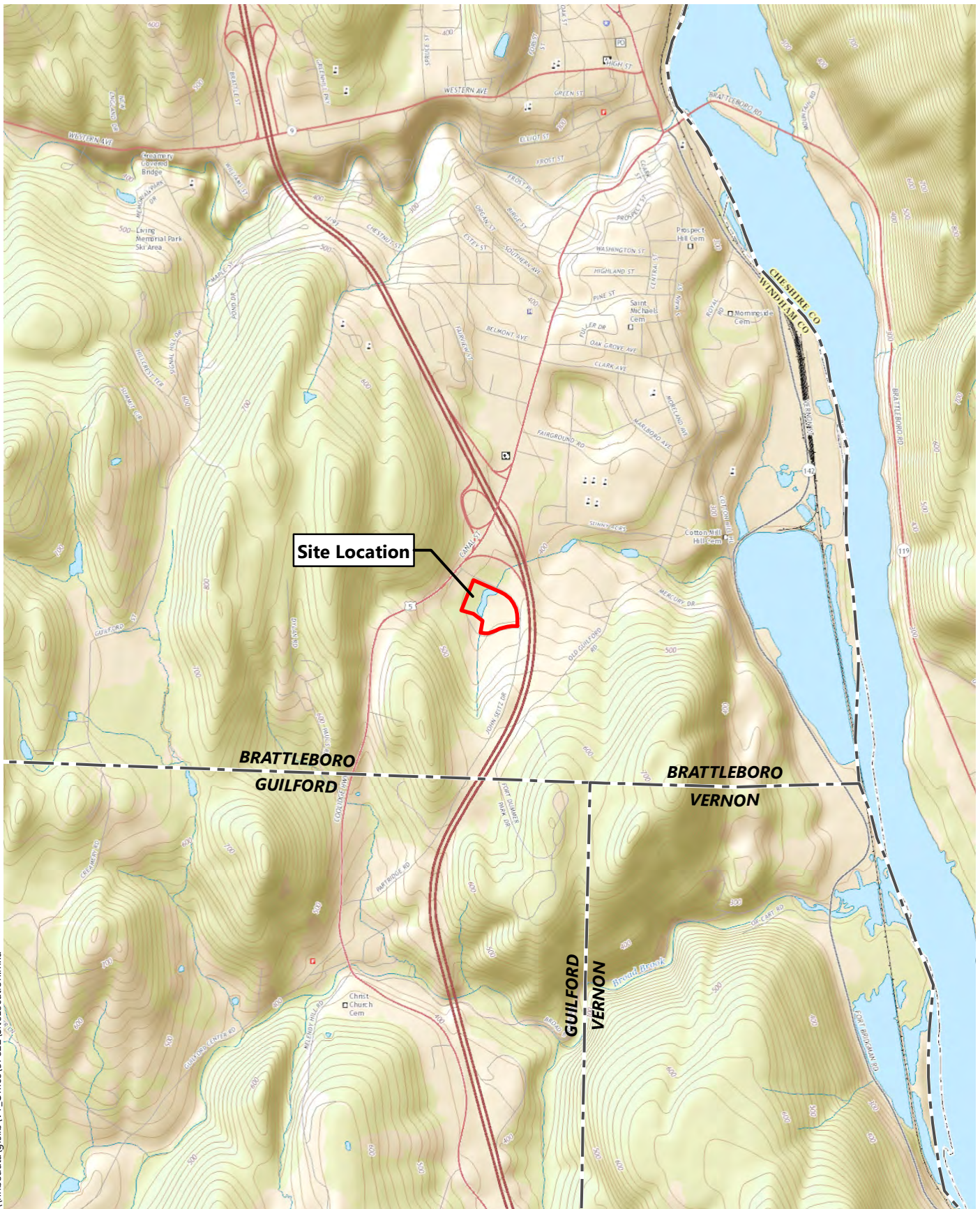
GS Precision, Inc. is requesting approval for parking lot for industrial parking lot expansion located at 101 John Seitz Drive, in Brattleboro, VT. The proposed project will impact 0 square feet of Class II wetland and 17535 square feet of Class II wetland buffer zone. This wetland has been designated as a significant (Class II) wetland under the Vermont Wetland Rules.

Copies of the application are available for review at the Vermont Wetlands Office in Montpelier, the Town Clerk's Office in Brattleboro, the Regional Planning Commission office in Brattleboro, and the Agency of Natural Resources website: <http://www.watershedmanagement.vt.gov/cfm/notices/info.cfm?id=9661> Individual Wetland Permits may only be approved if the Agency is satisfied that the applicant has demonstrated that the proposed use complies with the Vermont Wetland Rules and the proposed use will not have an undue adverse impact on the functions and values of any significant wetlands or their adjacent buffer zones. In making the determination that the applicant has met this burden, the Agency will evaluate the potential effects of the proposed use on the basis of (1) the use's direct and immediate effects on the wetland; and (2) the use's cumulative or on-going effects on the wetland.

Any person may file comments in writing by referencing Project 2015-592 through 12/10/2015 and sending them to:

anr.wsmdwetlands@state.vt.us

Watershed Management Division
Attn: Wetlands Program
Department of Environmental Conservation
One National Life Drive
Main Building, 2nd Floor
Montpelier, VT 05620-3522



\\nhbdata\gis\ib\VT_Office\57822\SiteLocation.mxd



101 John Seitz Drive Improvements | Brattleboro, VT

- Legend**
-  Site Location
 -  Municipal Boudnary

Site Location Map