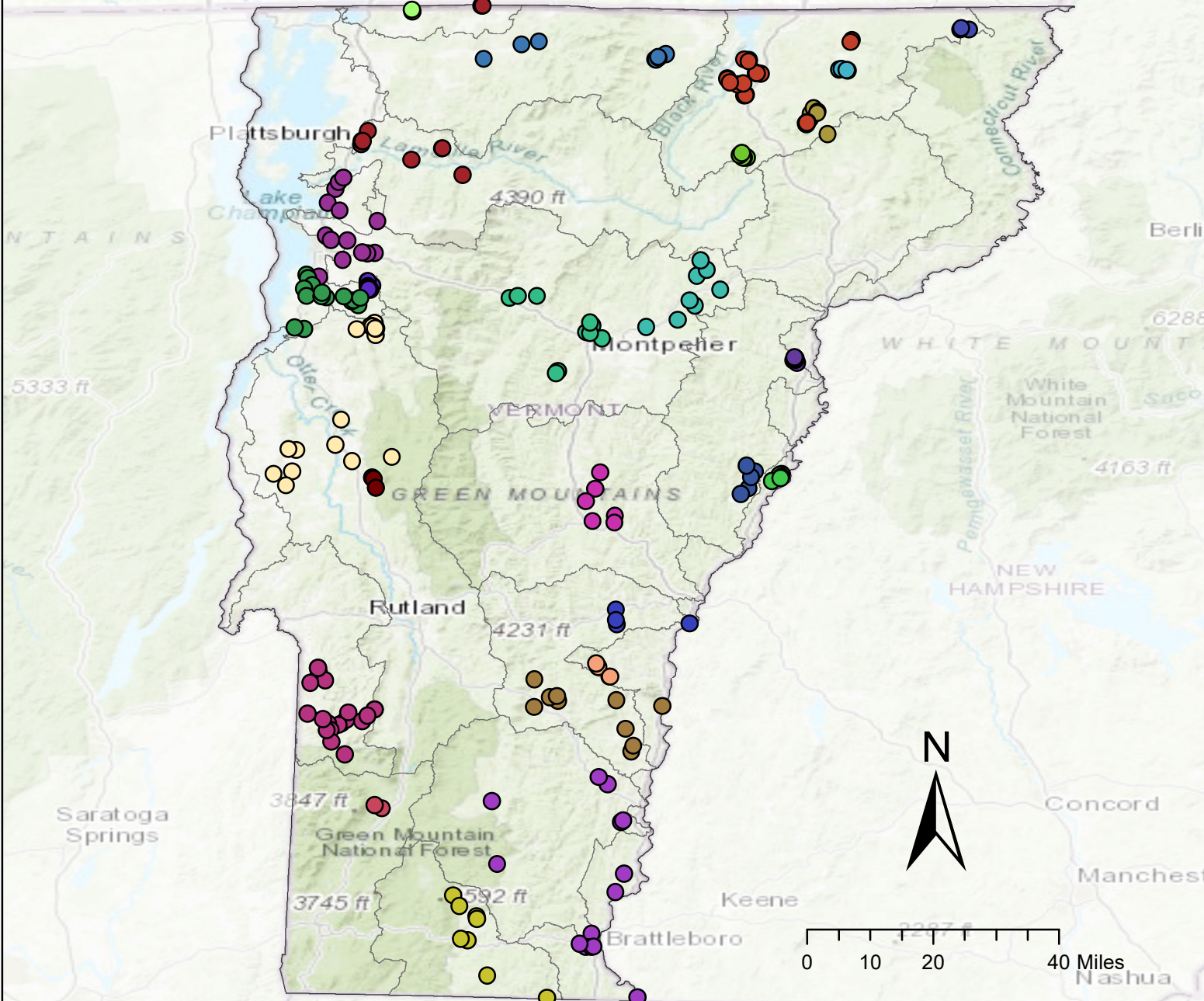


2021 LPP Water Quality Monitoring Sites



Partner_Organization

- | | |
|---|---|
| Addison Country River Watch Collaborative | Lake Iroquois Association |
| Bennington County Conservation District | Lake Morey Commission |
| Black River Action Team | Lake Willoughby-Westmore Association |
| Connecticut River Conservancy | Missisquoi River Basin Association |
| Caspian Lake- Greensboro Association | Orleans County NRCD |
| Echo Lake Protective Association | Ottauquechee River Group |
| Franklin County NRCD | Ottauquechee NRCD |
| Friends of the Winooski River | Poultney Mettowee NRCD |
| FWR & Upper Winooski Joint CCs | Rethink Runoff Stream Team |
| Friends of Little Averill | South Chittenden River Watch |
| Friends of Northern Lake Champlain | Southeastern Vermont Watershed Alliance |
| Lake Dunmore Fern Lake Association | Shadow Lake Association |
| Lake Fairlee Association | Ticklenaked Pond - Caledonia NRCD |
| | White River Partnership |