

LAROSA PARTNERSHIP PROGRAM NEWSLETTER

LPP Q & A:

Q: What does the LPP data review process entail?

A: LPP staff will thoroughly review all incoming results from VAEL for potential QAQC issues. These includes duplicate pairs that exceed the acceptable relative percent difference (RPD) and data outliers. We hope to have data fully reviewed and migrated to [IWIS](#) by late November or early December.

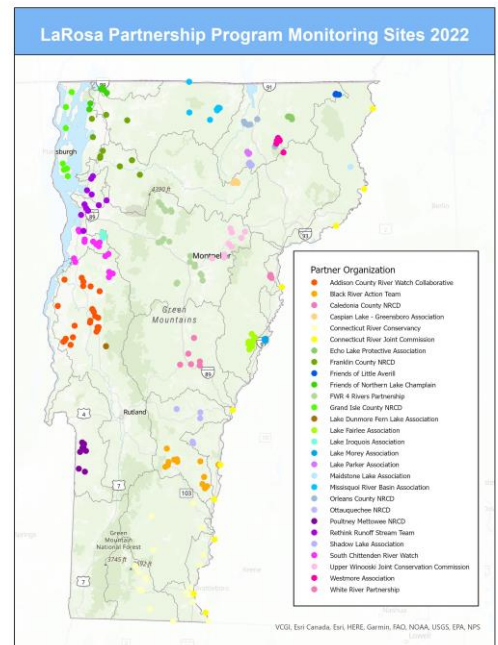
REMINDERS:

Please submit any outstanding flow observations. Flow observations are *essential* to the data review process. Without flow observations, your data cannot be reviewed or uploaded into IWIS. Delays in flow observation submission will lead to delays in data review and approval.



Friends of the Winooski River 4 Rivers Partnership sampling in Barre

We'd like to give a huge thank you to all our LaRosa partners for your hard work, patience, and dedication over the 2022 sampling season! Because of you, we have gathered over 4600 individual data points this year. Please keep in touch with any questions about your 2022 data or the 2023 sampling season.



UPDATES

- ❖ Please keep in mind that the PDF chemistry results sent by VAEL contain preliminary data that have not been reviewed or approved. If you plan to share this data in any form before the data review process is completed, they must be **clearly marked as preliminary**.
- ❖ After the data review process is completed, VTDEC staff will be providing a visual presentation of 2022 LPP data through Power BI. As of this time, VTDEC will not be providing written reports on 2022 LPP data.
- ❖ If you submitted nitrogen samples after the last sample pickup on August 2nd and 4th, please make sure that you have returned your acidification kit to VAEL. It is very important to return sulfuric acid droppers, as they need to be tested for contamination before the start of the next sampling season. These kits include:
 - Sulfuric acid droppers and secondary container
 - Safety goggles
 - Any unused gloves
- ❖ Please respond in a timely manner to any questions LPP staff may have about your 2022 data. This will help to streamline the data review process. Among other things, LPP staff may ask for missing flow data or request insight on duplicate pairs that have exceeded the acceptable relative percent difference (RPD).

Heather Pembrook: 802-490-6149, Heather.Pembrook@vermont.gov

Mel Auffredou: 802-461-6306, Mel.Auffredou@partner.vermont.gov

LaRosa Partnership Program website: <https://dec.vermont.gov/watershed/map/monitor/larosa>