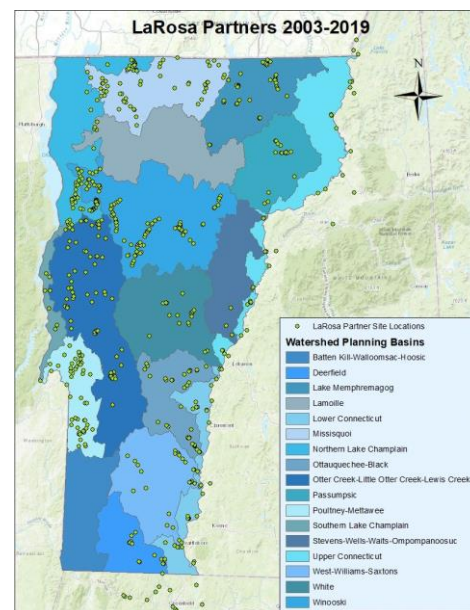


# LAROSA PARTNERSHIP PROGRAM NEWSLETTER



## LPP Q & A:

**Q:** Where can I find my organization's water quality monitoring data?

**A:** Completely reviewed data from 2017 and earlier can be viewed and downloaded from this [link](#) under the View and Export Data section of the LPP webpage. For partially reviewed and raw data from 2018 and 2019, contact Meaghan.

## REMINDERS:

None for now but stay tuned!

## ABOUT THE LAROSA PARTNERSHIP PROGRAM

Since 2003, this partnership has helped watershed associations and monitoring groups across Vermont implement new and/or ongoing monitoring projects for surface waters in need of water quality assessment by helping to alleviate the financial burden of laboratory analysis costs.

*We appreciate your adaptability and continued dedication to water quality monitoring despite all the challenges this year. Although we are disappointed that this past season did not go as planned, we are looking forward to getting back to the streams for sampling next spring!*

## UPDATES

- ❖ The LaRosa Partnership Program sampling will begin in the spring of 2021!
- ❖ We are in the final stages of reviewing the 2018 and 2019 water quality monitoring data and will release it for general access on the LPP webpage shortly.

## A message from Meaghan Hickey, LPP Assistant Coordinator

Thank you for all the warm welcomes in response to my introduction email! If you missed the email, I am the new ECO AmeriCorps member serving with LPP as the Assistant Coordinator. I will be helping Jim reviewing your water quality monitoring data and communicating with all of you! I hope to connect with you all regarding your LPP goals, concerns, or anything else that I can assist you with to strengthen our partnership. Please feel free to contact me or Jim by phone or email listed below. I look forward to working with you all this year!



Meaghan Hickey practicing fish identification!

**Jim Kellogg:** 802-490-6146, [Jim.Kellogg@vermont.gov](mailto:Jim.Kellogg@vermont.gov)

**Meaghan Hickey:** 802-461-6306, [Meaghan.Hickey@partner.vermont.gov](mailto:Meaghan.Hickey@partner.vermont.gov)

**LaRosa Partnership Program website:** <https://dec.vermont.gov/watershed/map/monitor/larosa>