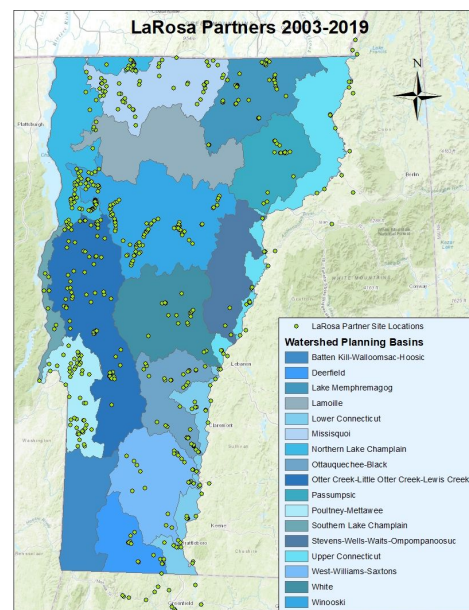


# LAROSA PARTNERSHIP PROGRAM NEWSLETTER



## QUESTIONS & ANSWERS

**Q:** What does the acidification of Total Nitrogen samples entail?

**A:** After sampling, you will store your TN samples on ice and then add 0.1 mL of 18M sulfuric acid within 24 hours to preserve them prior to analysis at the VAEL. We will provide the protective goggles, gloves, and acid dropper needed. For safety reasons, we ask that only trained project coordinators and **not** volunteers perform the acidification. We will share a written procedure and additional guidance at the April training.

## REMINDERS:

- Confirm your participation and provide the season prep info requested in your site selection announcement email by **March 31<sup>st</sup>**. If you need an extension, please contact Meaghan.
- See you **April 13<sup>th</sup> 11am-1pm** for the annual training!

## ABOUT THE LAROSA PARTNERSHIP PROGRAM

Since 2003, this partnership has helped watershed associations and monitoring groups across Vermont implement new and/or ongoing monitoring projects for surface waters in need of water quality assessment by helping to alleviate the financial burden of laboratory analysis costs.

## UPDATES

- ❖ Site selections for the 2021 season have been announced! Everyone should have received an email with your organization's selected sites and parameters. Be aware that some parameters were changed from your original nomination forms.
- ❖ The annual April training will be held on Microsoft Teams on **April 13<sup>th</sup> from 11am - 1 pm**. Please let Meaghan know if you are unable to attend.

## Important Information & Next Steps

We received a total of 374 site nominations across 27 watershed organizations, conservation commissions, and NRCD's, which the Site Selection Team pared down to 238 to meet our budget. Cutting sites was not an easy task, but we followed the [selection criteria](#) as well as your organization's priorities and did our best to ensure equitable distribution of sites both spatially and across all partners. We are happy to say that no projects were eliminated, and we expanded participation to new areas of the state!

Our next steps include submitting bottle orders and a sample plan to VAEL, updating the LPP Quality Assurance Project Plan (QAPP), developing a sample pick-up route from the suggested locations you provided, and planning the April training. Once we confirm all site information, we will create an interactive online map of all the sites to be monitored this season. We will also be finalizing the standardized LaRosa IDs in the [LPP staff provided 6-digit Location ID]-[partner provided LaRosa site ID] format for new sites with our database manager (see the [January newsletter](#) for an explanation of the new naming conventions). Finally, as May approaches, we will prepare and distribute sampling supplies to each partner while test driving our sample pick-up route. There is a lot to do in the next couple months, but we are excited to get the sampling season underway!

**2021 LPP Timeline:**

Tentative Date	Goal
March 19 <sup>th</sup>	Selected sites and parameters distributed to LPP partners.
March 31 <sup>st</sup>	Deadline for LPP partners to confirm participation in program and provide additional season prep info.
early to mid-April	Administration: LPP staff submit QAPP, sampling plans, bottle orders, etc.
April 13	Annual April Training: online with Microsoft Teams. <a href="#">Agenda</a> <b>Join on your computer or mobile app</b> <a href="#">Click here to join the meeting</a>
End of April	Distribute April newsletter with map of finalized sites.
By May 1 <sup>st</sup>	Print pre-log sample forms, print labels, package supplies for each group. Finalize pick-up route and locations with LPP partners. Test drive the pick-up route & drop off bottles & supplies.
May 1 <sup>st</sup>	Sampling season begins! 8 regular sampling events + 2 high flow events (10 total events).  Pick up samples every two weeks on Mondays and Wednesdays (some partners might have a different pick-up through lay monitoring program). Drop off new set of sample bottles and labels at least monthly. DEC staff deliver and submit samples to VAEL.  Pick-Up Dates: Week 1: May 10 <sup>th</sup> & 12 <sup>th</sup> Week 2: May 24 <sup>th</sup> & 26 <sup>th</sup> Week 3: June 7 <sup>th</sup> & 9 <sup>th</sup> Week 4: June 21 <sup>st</sup> & 23 <sup>rd</sup> Week 5: new dates to come due to the holiday Week 6: July 19 <sup>th</sup> & 21 <sup>st</sup> Week 7: August 2 <sup>nd</sup> & 4 <sup>th</sup>
Week of August 16 <sup>th</sup>	Last sample pick-up week. Monday pick-up will be moved due to Bennington Battle Day holiday.

**Jim Kellogg:** 802-490-6146, [Jim.Kellogg@vermont.gov](mailto:Jim.Kellogg@vermont.gov)

**Meaghan Hickey:** 802-461-6306, [Meaghan.Hickey@partner.vermont.gov](mailto:Meaghan.Hickey@partner.vermont.gov)

**LaRosa Partnership Program website:** <https://dec.vermont.gov/watershed/map/monitor/larosa>