

# LAROSA PARTNERSHIP PROGRAM NEWSLETTER

## LPP Q & A:

**Q:** How much rainfall is needed for a high flow event?

**A:** When determining if a storm is big enough to induce a high flow, generally look for at least 0.5-1 inch of rain falling in a 24-hour period prior to sampling.

## REMINDERS:

Flow observations are imperative for the data review process. If we are missing flow data for your samples, we will not be able to move forward with data review. For this reason, please ensure that flow data for **all sites and all sampling events** have been submitted by checking the [LPP Flow Data Dashboard](#).

Have you sampled your two high flow events? If not, please do your best to get out and sample during or after a rain event before the end of the sampling season.

*It's hard to believe but the end of the sampling season is just around the corner! There are two sample pickups left, so please make sure you have made up any missing samples and are doing your best to sample those high flow events.*

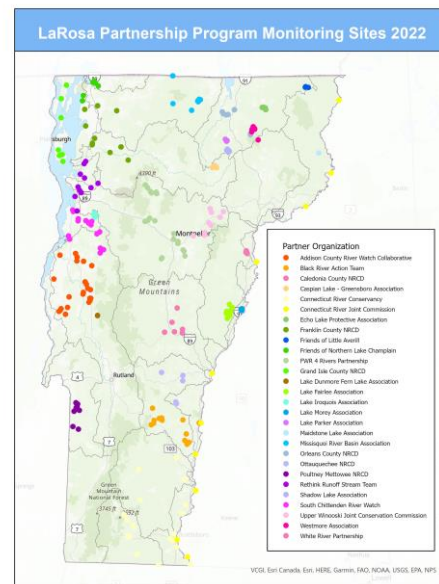
## UPDATES

❖ The last two sample pickups will occur on: Tuesday, July 19<sup>th</sup> and Thursday, July 21<sup>st</sup>; and Tuesday, August 2<sup>nd</sup> and Thursday, August 4<sup>th</sup>.

❖ During the last sample pickup, **please leave the following items** for LPP staff to retrieve:

- Acid kits: safety goggles, sulfuric acid, and disposable gloves
- Test tube racks provided by LPP staff
- Leftover labels or VAEL field sheets
- Leftover sample bottles or test tubes

❖ If you have missed any sampling events for any reason, please make up these missing samples by sampling weekly instead of biweekly. All 8 baseflow sampling events and 2 high flow events should be submitted by the end of the sampling season. Samples submitted after the end of the sampling season should be kept to a minimum.



## ECO AMERICORPS

I am excited to announce I will be spending a second year serving as the MAP ECO AmeriCorps member. I have learned so much this past year and I am very lucky to have another chance to serve in this amazing position. Please note there will be a gap between the end of my first term on August 14<sup>th</sup> and the beginning of my second term on September 15<sup>th</sup> during which I will be unavailable. Please direct any questions regarding LPP to Biomonitoring Supervisor Heather Pembrook ([Heather.Pembrook@vermont.gov](mailto:Heather.Pembrook@vermont.gov)) during this period. I look forward to spending another year monitoring Vermont's rivers and streams with all of you! – Mel

Heather Pembrook: 802-490-6149, [Heather.Pembrook@vermont.gov](mailto:Heather.Pembrook@vermont.gov)

Mel Auffredou: 802-461-6306, [Mel.Auffredou@partner.vermont.gov](mailto:Mel.Auffredou@partner.vermont.gov)

LaRosa Partnership Program website: <https://dec.vermont.gov/watershed/map/monitor/larosa>