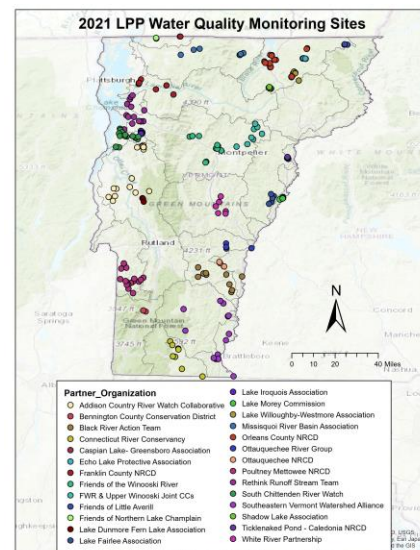


LAROSA PARTNERSHIP PROGRAM NEWSLETTER



LPP Q & A:

Q: Can LaRosa partners nominate high quality sites for monitoring?

A: Yes, one of the goals listed on the LPP Monitoring Matrix is that of identifying streams with the potential to meet Very High Quality standards [A(1) or B(1)] as defined in the Vermont Water Quality Standards. Please don't feel limited to nominating only impaired sites and remember that high quality sites are also eligible for LPP monitoring.

REMINDERS:

2022 Site Nominations are due **January 7th**.

Please remember that, due to our limited capacity, some nominated sites will inevitably be cut during the Site Selection Process.

ABOUT THE LAROSA PARTNERSHIP PROGRAM (LPP)

Since 2003, this partnership has helped watershed associations and monitoring groups across Vermont implement new and/or ongoing monitoring projects for surface waters in need of water quality assessment by helping to alleviate the financial burden of laboratory analysis costs.

The 2022 Site Selection Team will begin reviewing all 2022 site nominations this month. Final site selection review is scheduled for February 15th, and we hope to share selected sites with partners in mid-February.

UPDATES

❖ This year we have decided to begin the sampling season in mid-April to catch some spring high flows. Please view the tentative 2022 sampling season schedule [below](#).

❖ We have recently redesigned the [LPP website](#). We hope that this will make the website easier to navigate and more visually appealing to past and current partners as well as new viewers interested in learning more about LPP.

2022 FLOW OBSERVATIONS

We are considering using the smartphone app Survey123 to allow partners to notate and submit flow observations directly from the field. If you are interested in helping us test this out before the start of the 2022 sampling season, please reach out to Mel.Auffredou@partner.vermont.gov. We are hoping this will streamline the process of taking and gathering flow observations for both partners and LPP staff.



Heather Pembrook: 802-490-6149, Heather.Pembrook@vermont.gov

Mel Auffredou: 802-461-6306, Mel.Auffredou@partner.vermont.gov

Meaghan Hickey: Meaghan.Hickey@vermont.gov

LaRosa Partnership Program website: <https://dec.vermont.gov/watershed/map/monitor/larosa>

Dates	Explanation
January 7 th , 2022	Site Nominations due
Mid-February	LPP staff share selected sites with partners
Late February/Early March	Program participation, site confirmation, & season prep info due
Late March	LPP Annual Training & Orientation
Early April	LPP staff deliver sampling season supplies to partners
Saturday, April 16 th	Sampling season begins
Week of April 25 th (2 pick-up days/week)	<p>Sample pickups begin and continue every two weeks:</p> <ul style="list-style-type: none"> • week of April 25 (1st week) • week of May 9 (2nd week) • week of May 23 (3rd week) • week of June 6 (4th week) • week of June 20 (5th week) • week of July 4 (6th week) • week of July 18 (7th week) • week of August 1st (8th and final week)
Week of August 1 st	Sample pickups end