

# LAROSA PARTNERSHIP PROGRAM NEWSLETTER

## LPP Q & A:

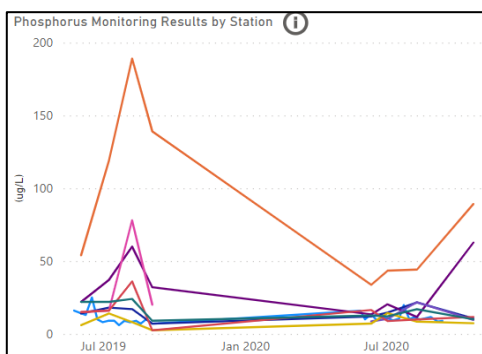
**Q:** Why does LPP ask partners to sample low flow?

**A:** LPP samples low flow to gather water quality data that is relevant to the Vermont Water Quality Standards. These standards are based on low median monthly flow. High flows are also helpful in determining sources of stress. Because of this, LPP asks partners to sample 8 low flow events and 2 high flow events.

## REMINDERS:

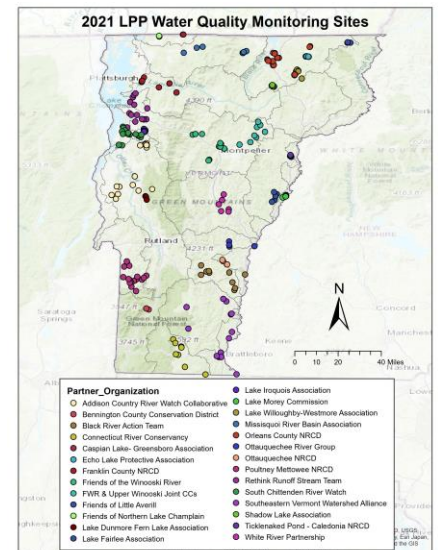
If you have not yet reviewed your **2021 QC'd data**, please do so before the 2022 Site Nomination Process begins on **December 6<sup>th</sup>**.

To help with the 2021 data reporting process, please send any remaining 2021 flow data to LPP Staff **as soon as possible**.



## ABOUT THE LAROSA PARTNERSHIP PROGRAM (LPP)

Since 2003, this partnership has helped watershed associations and monitoring groups across Vermont implement new and/or ongoing monitoring projects for surface waters in need of water quality assessment by helping to alleviate the financial burden of laboratory analysis costs.



**The 2022 Site Nomination Process will begin on December 6<sup>th</sup>! Site nominations are due January 7<sup>th</sup>. Please keep in mind that it is LPP's goal to sample sites continuously for 3 to 4 years. Therefore, many sites sampled in 2021 will be good candidates for the 2022 sampling season.**

## UPDATES

- ❖ Meaghan Hickey will be returning to MAP and LPP for the next three months to assist in the transition after Jim Kellogg's retirement. We are very lucky to have her back!
- ❖ This year DEC Staff have had the opportunity to nominate sites internally before the external Site Nomination Process begins. LPP Staff will send relevant internal site nominations to partners as soon as possible. These internal nominations are meant to act as suggestions and partners **are not required** to nominate sites that have been nominated by DEC staff.

## 2021 Data Reporting

This winter, DEC Staff will be working to effectively communicate water quality data from the LPP 2021 sampling season. We will be using visually interactive tool to display LPP data in a way that is easier to understand and more accessible. Please [click here](#) to view an example.

Heather Pembrook: 802-490-6149, [Heather.Pembrook@vermont.gov](mailto:Heather.Pembrook@vermont.gov)

Mel Auffredou: 802-461-6306, [Mel.Auffredou@partner.vermont.gov](mailto:Mel.Auffredou@partner.vermont.gov)

Meaghan Hickey: [Meaghan.Hickey@vermont.gov](mailto:Meaghan.Hickey@vermont.gov)

LaRosa Partnership Program website: <https://dec.vermont.gov/watershed/map/monitor/larosa>