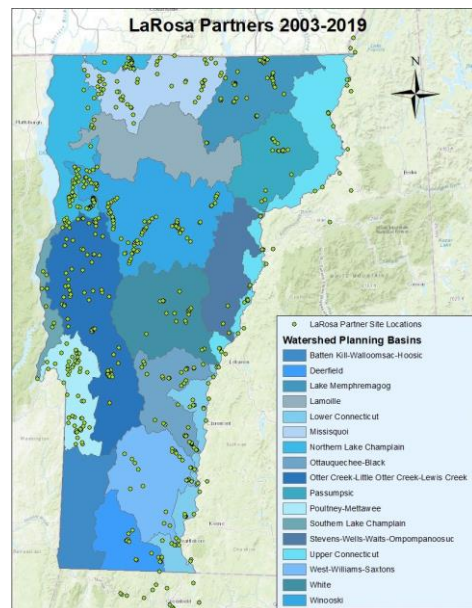


LAROSA PARTNERSHIP PROGRAM NEWSLETTER



Q & A:

We have received many questions with the rollout of the new LPP model, so please see the [Q & A document](#) posted on the LPP website for the full list of questions and answers.

REMINDERS:

- Complete the [Site Nomination Form](#) by **January 29th**. Remember to cc your watershed planner!
- View the [Monitoring Site Details Report](#) tool for the new LaRosa ID naming conventions.
- [Read about chloride](#) and why LPP is monitoring it.
- Keep checking the [website](#) for updates and information.

ABOUT THE LAROSA PARTNERSHIP PROGRAM

Since 2003, this partnership has helped watershed associations and monitoring groups across Vermont implement new and/or ongoing monitoring projects for surface waters in need of water quality assessment by helping to alleviate the financial burden of laboratory analysis costs.

UPDATES

- ❖ We are excited to kick off 2021 with the start of the new LPP model! A summary of the new model can be found in this [PowerPoint presentation](#).
- ❖ The [Site Nomination Form](#) has been sent out and is due on **Friday, January 29th**. Please remember to **cc your watershed planner!**
- ❖ The Watershed Management Division's (WSMD) database has been updated with the standardized site names introduced at the December meeting (see details below).
- ❖ Wondering about the when, where, why, and how of chloride monitoring? [Read our explanation](#).

Other Important Information

Monitoring site selection will not involve a Request for Proposal (RFP) this year. Instead, you will nominate sites that you wish to monitor by working with your watershed planner to fill-out the Site Nomination Form. All sites must meet the nomination criteria outlined in the [Site Selection Process, Criteria, and Instructions](#) document. The forms will be reviewed by a selection team who will select sites for the 2021 LPP season based on the pre-determined selection criteria. The final list of selected sites will be announced in March.

Additionally, we have standardized the LPP monitoring site naming conventions for efficiency. All LPP sites will now be named using the [6-digit LocationID]-[partner-given LaRosaID] format (e.g. 522445-LFB0.5). We have already matched Location IDs with all LPP sites in WSMD's IWIS (Integrated Watershed Information System) database. The new site names and associated site details can be viewed by partner organization and exported via this [Monitoring Site Details Report](#) linked under the View and Export LaRosa Data section of the LPP website.

2021 LPP Timeline:

Dates	Explanation
January 8, 2021	LPP staff distribute site nomination materials: Instructions, nomination form excel document, timeline, nomination, and selection criteria
January 8-29, 2021 (3 weeks)	Partners work with their watershed planner to develop site nominations
January 29, 2021	Partners send site nominations to LPP staff, cc'ing the watershed planner
February 1-March 1, 2021 (One month)	LPP Site Selection Team reviews nominated sites and applies selection criteria
Mid-March 2021	LPP staff share selected sites with partners
Early April 2021	LPP staff and partners: LPP Annual Meeting and Training
Week of May 10 th (2 days, yet to be determined which days of the week)	Sample pickups begin. Continue every two weeks: week of May 10 (1 st week), May 24 (2 nd week), June 7 (3 rd week), June 21 (4 th week), July 5 (5 th week) but not Monday that week b/c State holiday celebrated on Monday, July 19 (6 th week), August 2 (7 th week), August 16 (8 th and final week) but not Monday that week due to Bennington Battle Day holiday
Week of August 16 th	Sample pickups end this week.

