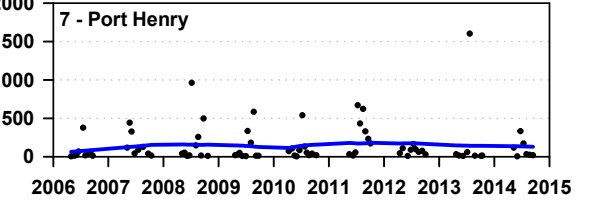
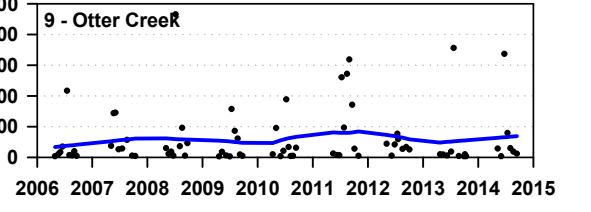
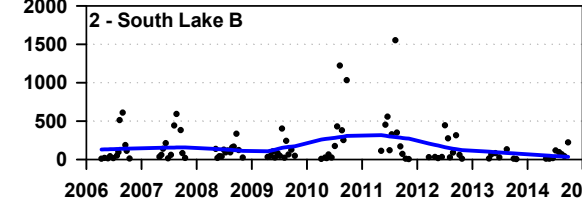
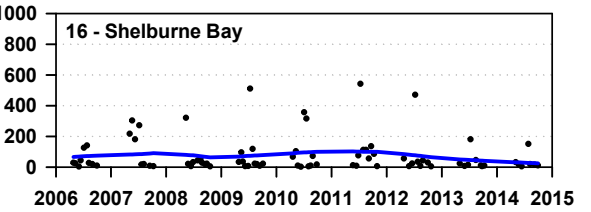
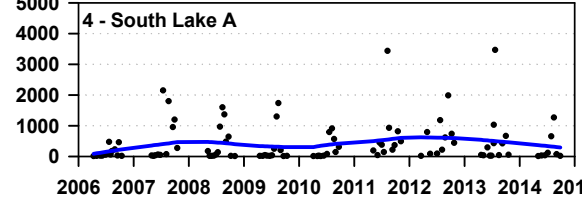
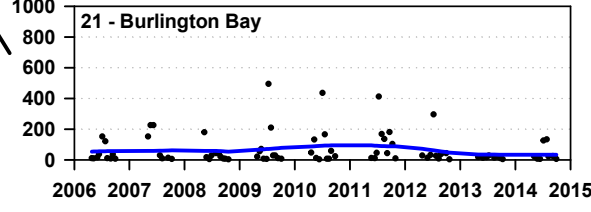
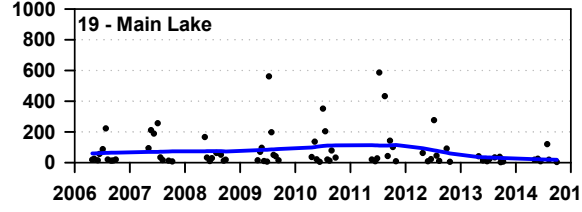
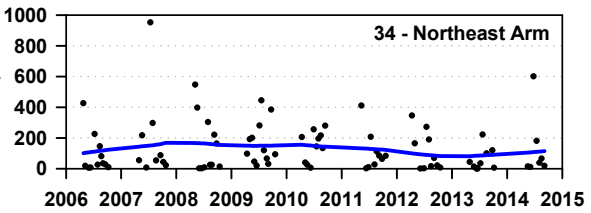
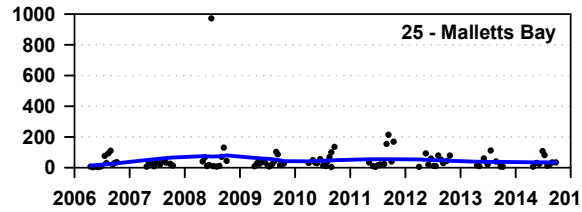
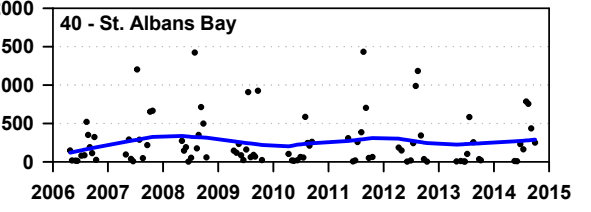
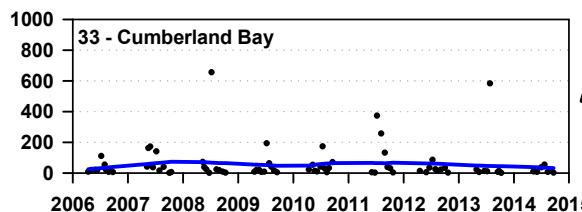
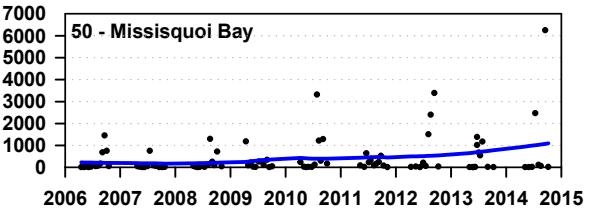
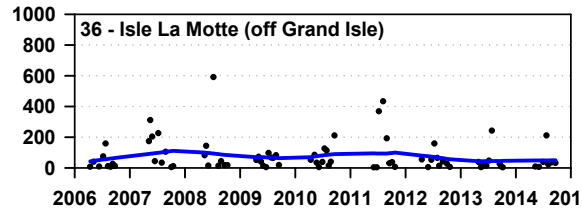
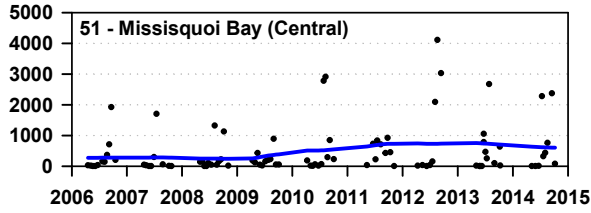
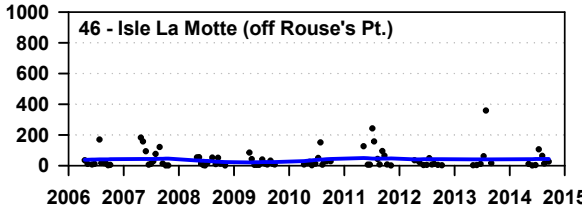


Net-captured phytoplankton biovolume ($\mu\text{m}^3/\text{L}$, millions) in Lake Champlain, 2006 - 2014

Blue lines indicate trends over time as determined by Lowess smoothing analysis. Net mesh = $63\mu\text{m}$.



Net-captured phytoplankton biovolume in Lake Champlain 2006 - 2014

Net mesh = 63 μ m

