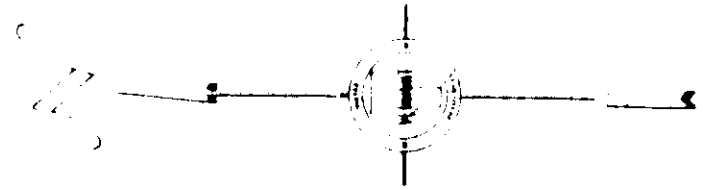
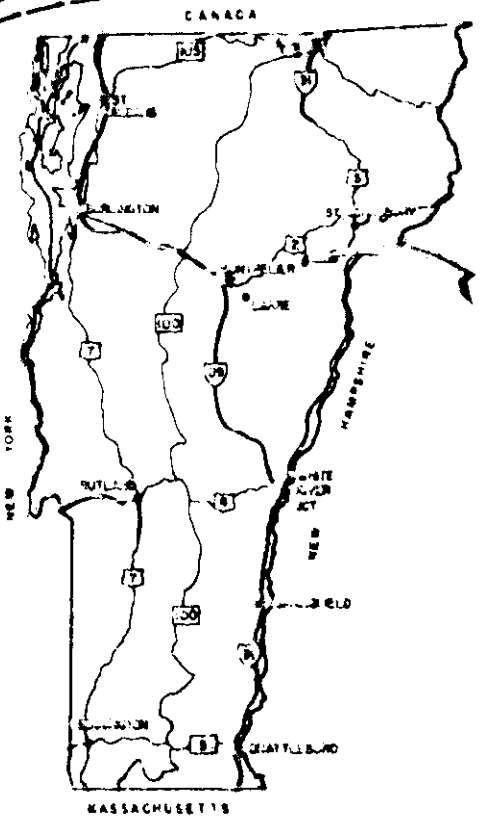
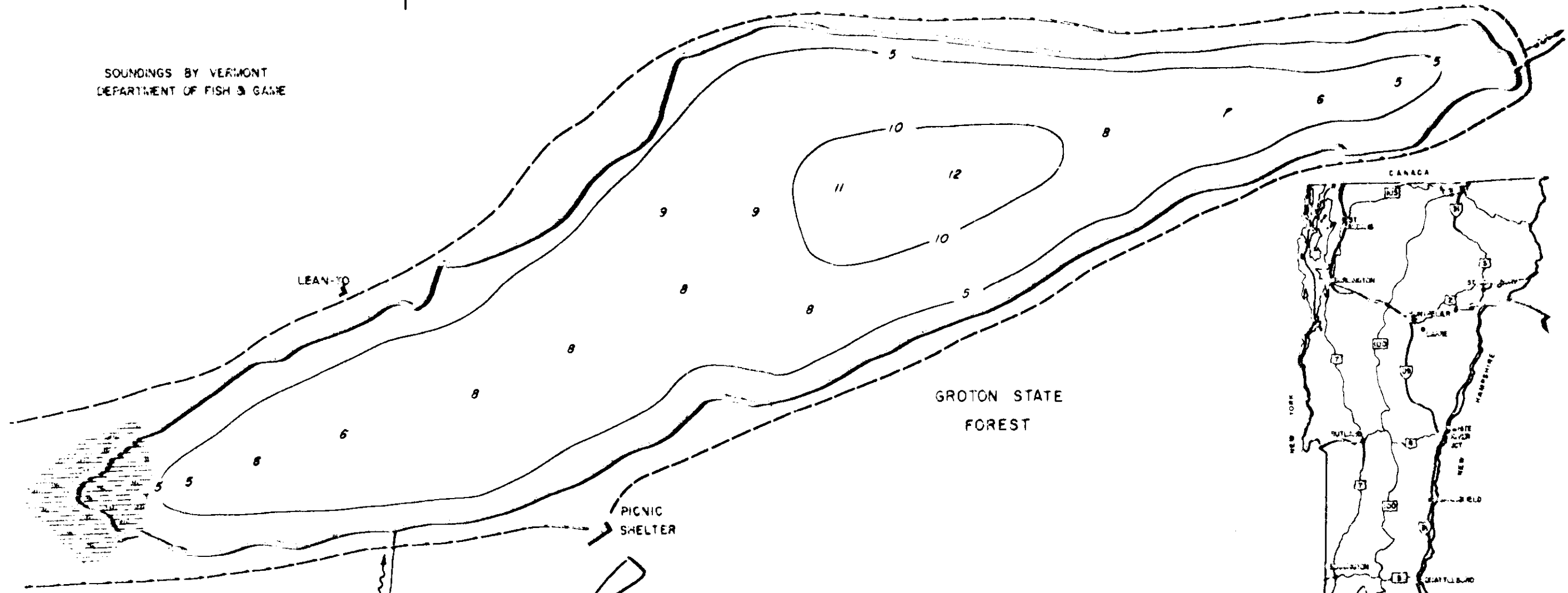


GROTON STATE FOREST

NOT FOR USE IN NAVIGATION
NOT FOR COPY OR RESALE



SOUNDINGS BY VERMONT DEPARTMENT OF FISH & GAME



SURFACE AREA = 51 ACRES

LEGEND

- GRAVEL
- TRAIL
- BUILDING
- SWAMP

PICNIC AREA

OSMORE POND

TOWN OF PEACHAM CALEDONIA COUNTY

100 0 100 200 300 400 500 FEET

Drawn By G.V.K.	DEPARTMENT OF WATER RESOURCES VERMONT CONSERVATION COMMISSION	Survey Date AUGUST 29, 1960
Checked By A.P.S.		Printed DEC 1972
Scale Date 12/12/72		