

MAIDSTONE LAKE

ELEV. - 1303'

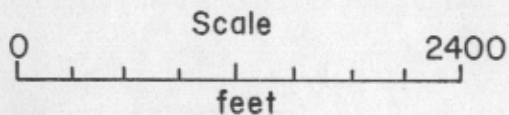
SURFACE AREA = 796 ACRES

LEGEND

Spot depths ... feet	x 26
Station numbers	W.3-E.3
Granite bedrock	
Boulders	
Sand beaches	
Sand - thin mud limit
Thin - thick mud limit	-----
Shoals	-----
Ledges	

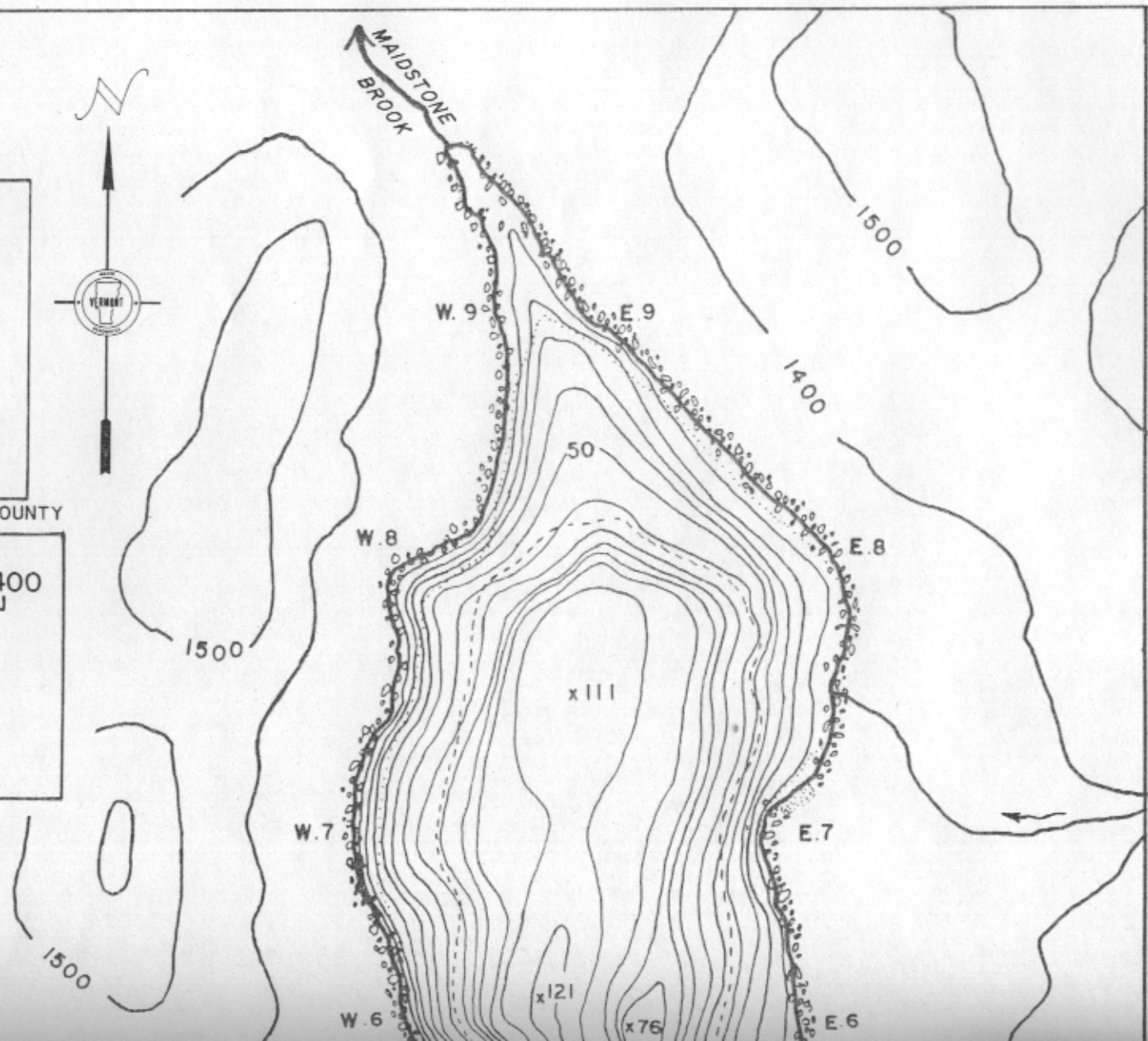
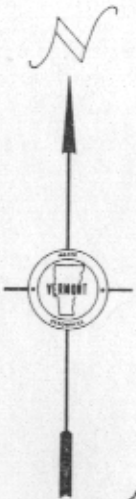
TOWN OF MAIDSTONE

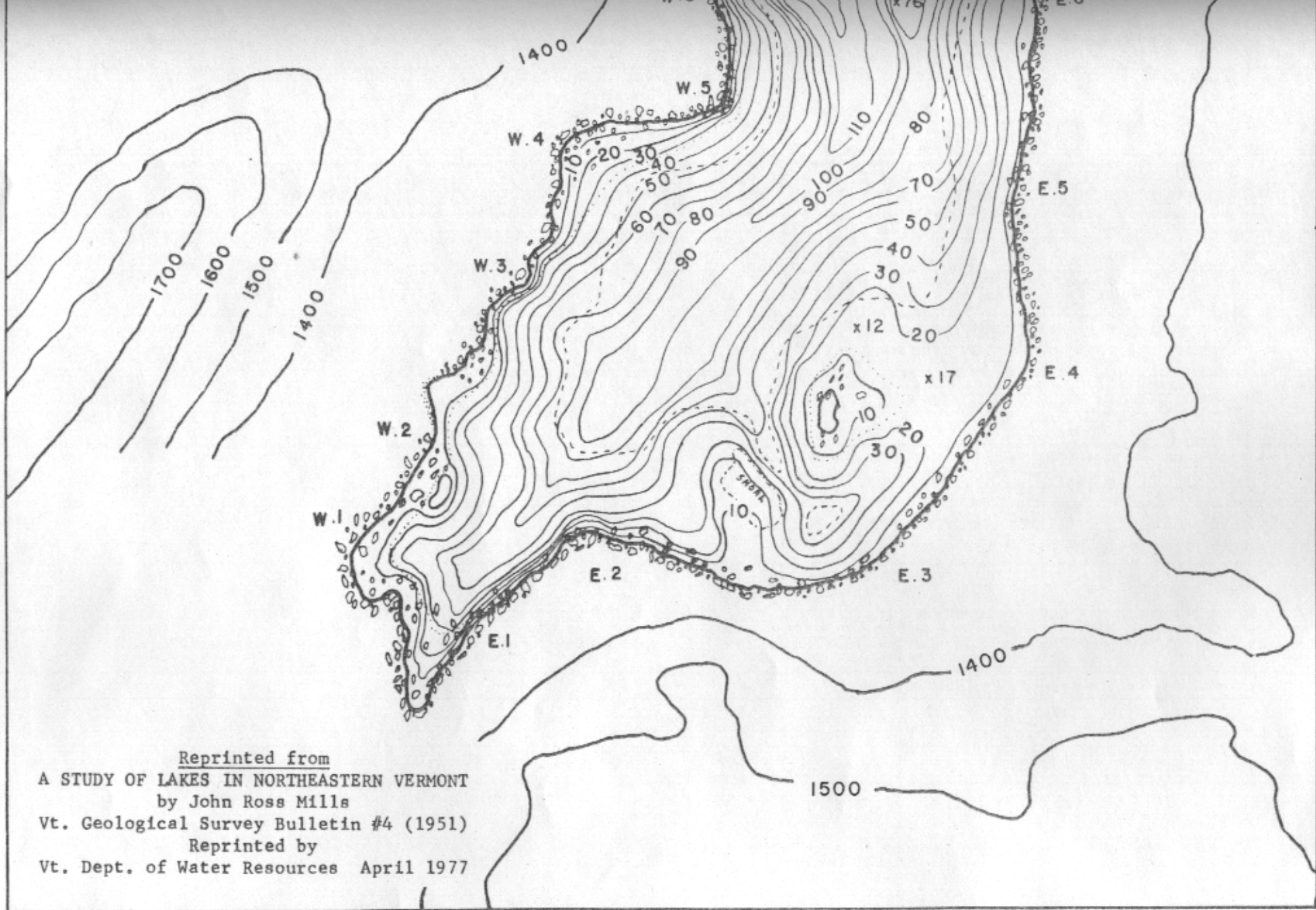
ESSEX COUNTY



Contour interval 100'
Depth contour interval .. 10'

Base U.S.G.S. Topo. Quad .. x 5
John R. Mills May 1949





Reprinted from
A STUDY OF LAKES IN NORTHEASTERN VERMONT
by John Ross Mills
Vt. Geological Survey Bulletin #4 (1951)
Reprinted by
Vt. Dept. of Water Resources April 1977