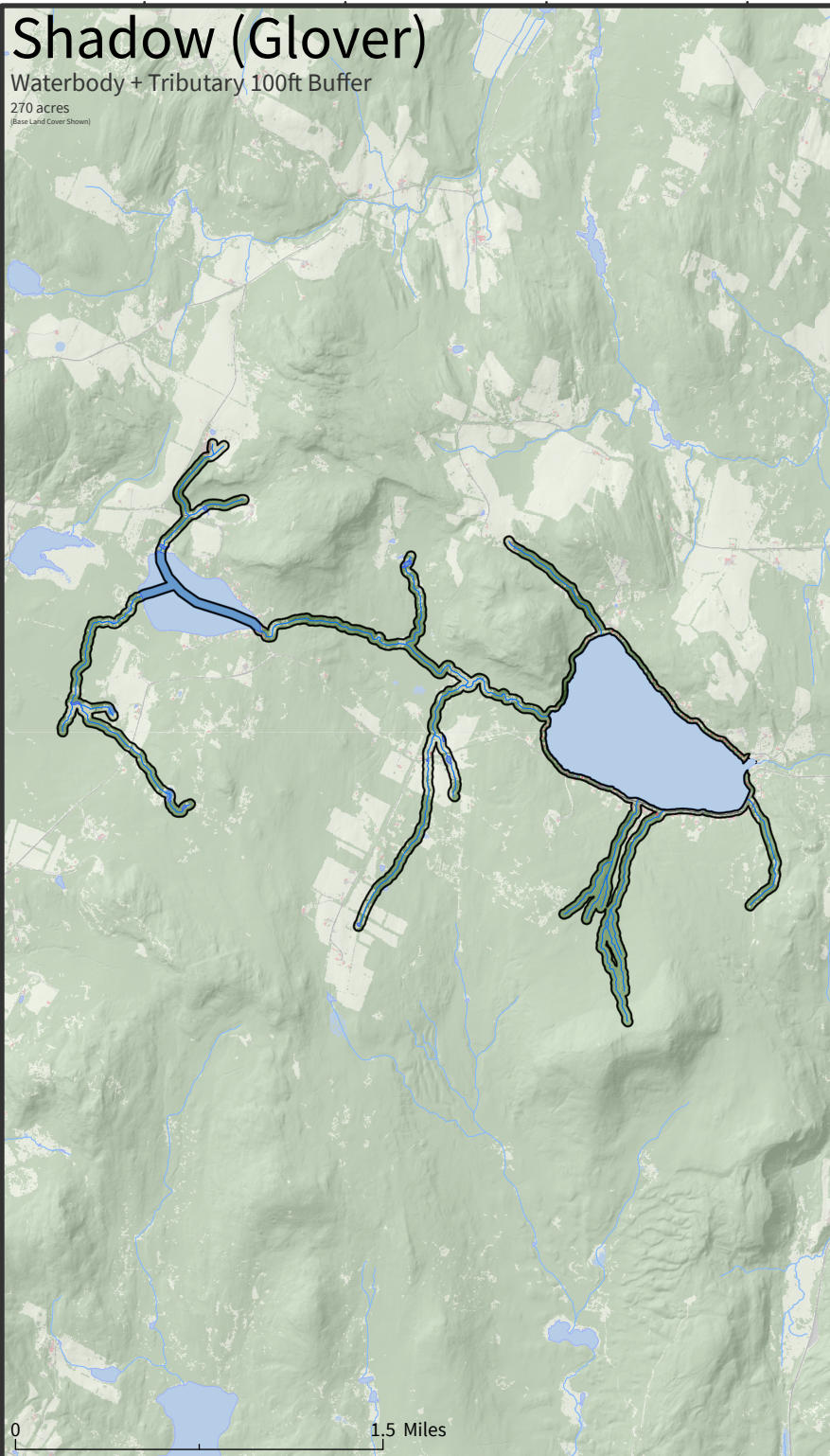


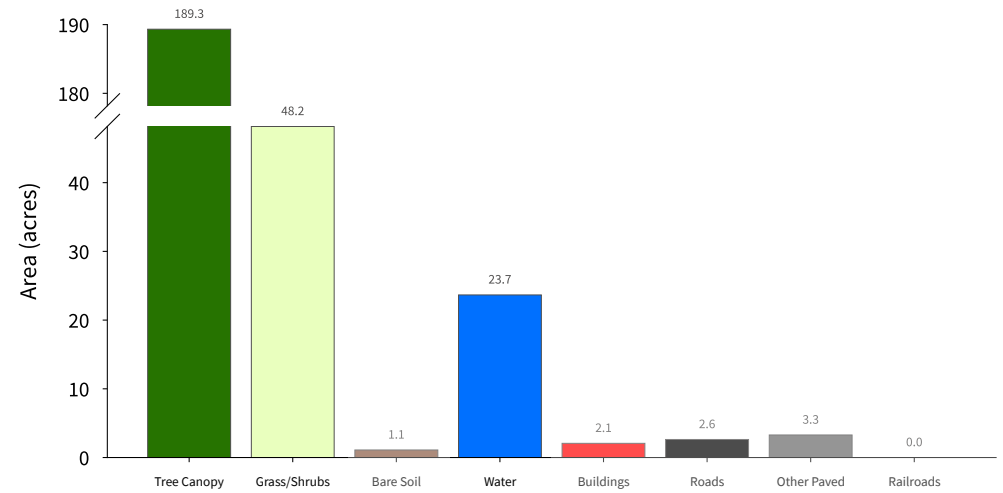
Shadow (Glover)

Waterbody + Tributary 100ft Buffer
270 acres
(Base Land Cover Shown)



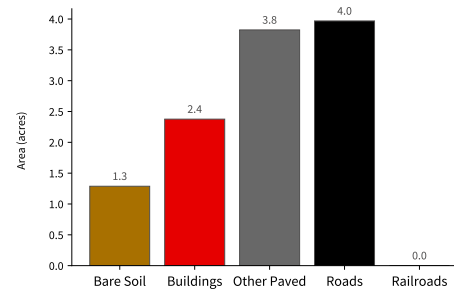
High-Resolution Land Cover Summary

Base Land Cover (Top-Down*)

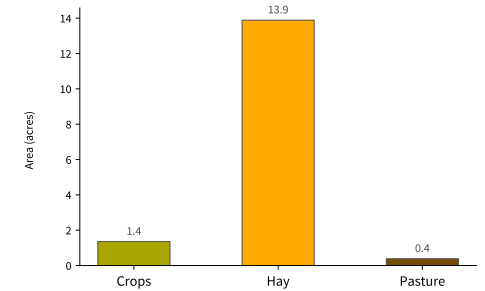


Supplemental Land Cover

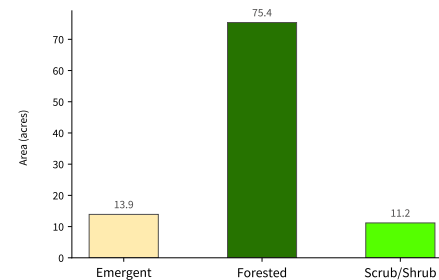
Impervious Surfaces (11.46 acres - 4.2 % of total) (Bottom-Up**)



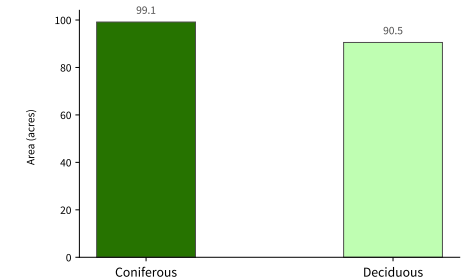
Agriculture (15.62 acres - 5.8 % of total)



Wetlands (100.45 acres - 37.2 % of total)



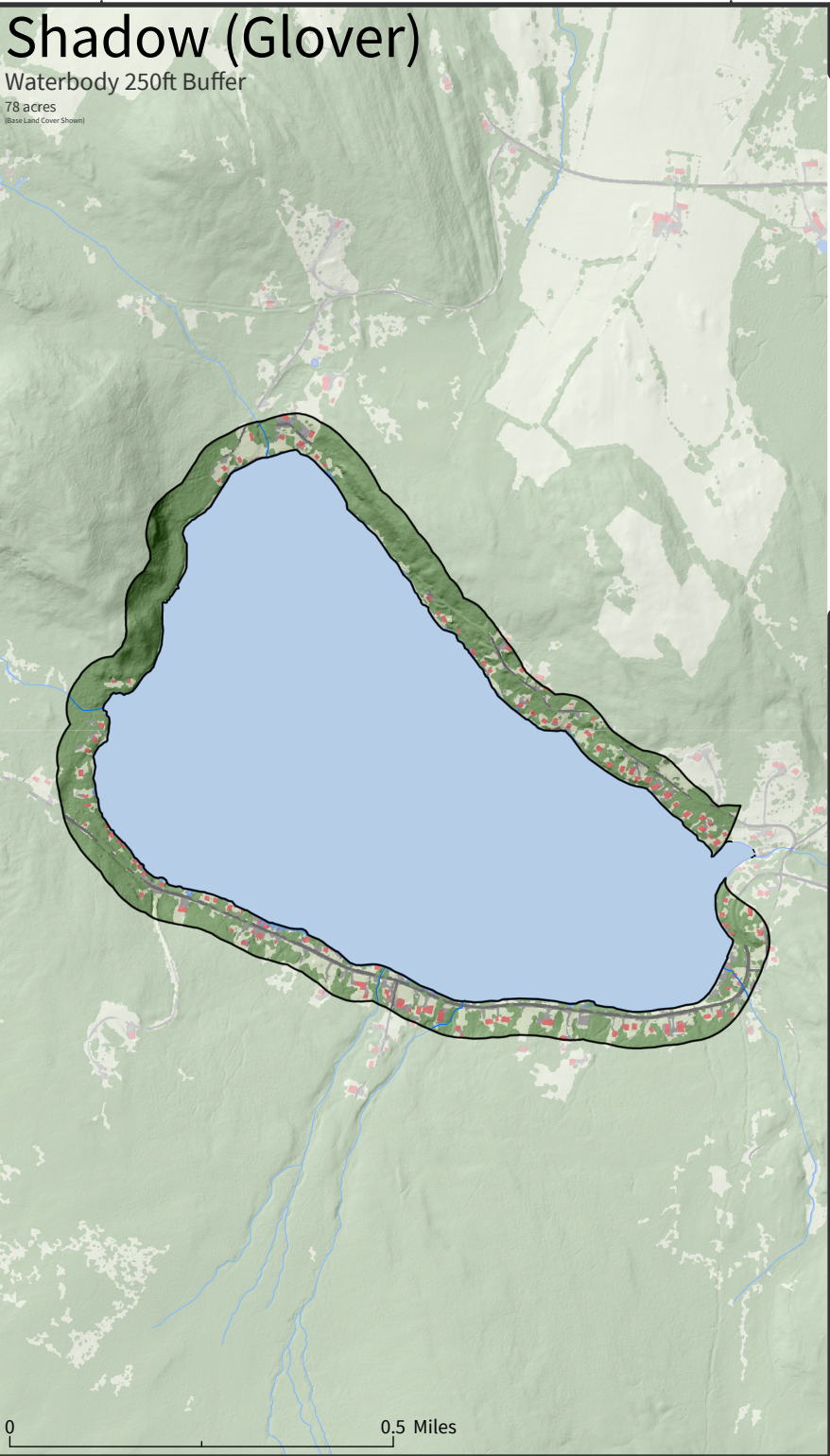
Tree Canopy (189.68 acres - 70.3 % of total)



*Top-Down: A traditional land cover mapping approach - land cover is mapped as the uppermost land cover class.
**Bottom-Up: A new land cover mapping approach - land cover is mapped as the lowermost land cover class. This approach results in improved mapping of features overlapped/observed by other features.
See UVM SAL High-Resolution Land Cover 2022 Report for more detail.

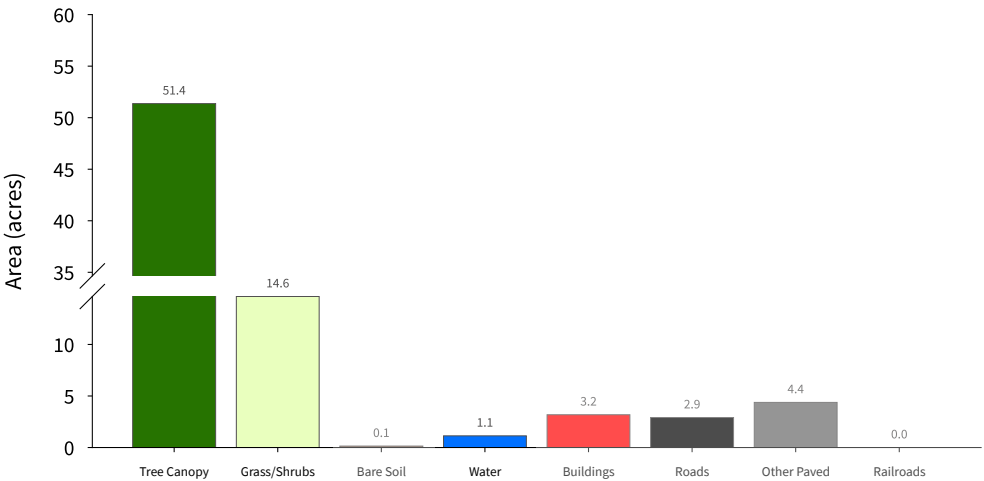
Shadow (Glover)

Waterbody 250ft Buffer
78 acres
(Base Land Cover Shown)



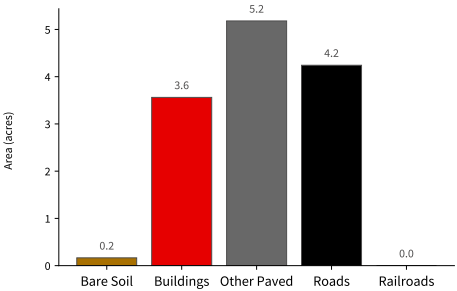
High-Resolution Land Cover Summary

Base Land Cover (Top-Down*)



Supplemental Land Cover

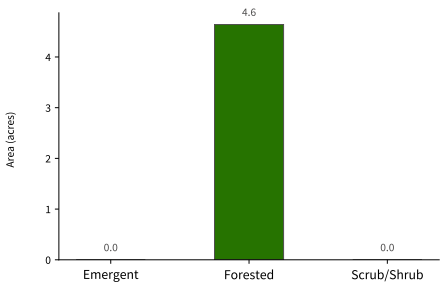
Impervious Surfaces (13.15 acres - 16.9 % of total) (Bottom-Up**)



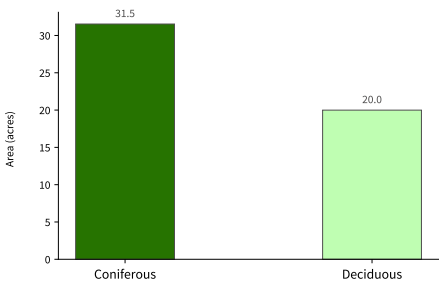
Agriculture (0 acres - 0 % of total)

No Agricultural Land Cover Mapped in this Area

Wetlands (4.64 acres - 5.9 % of total)



Tree Canopy (51.53 acres - 66.1 % of total)

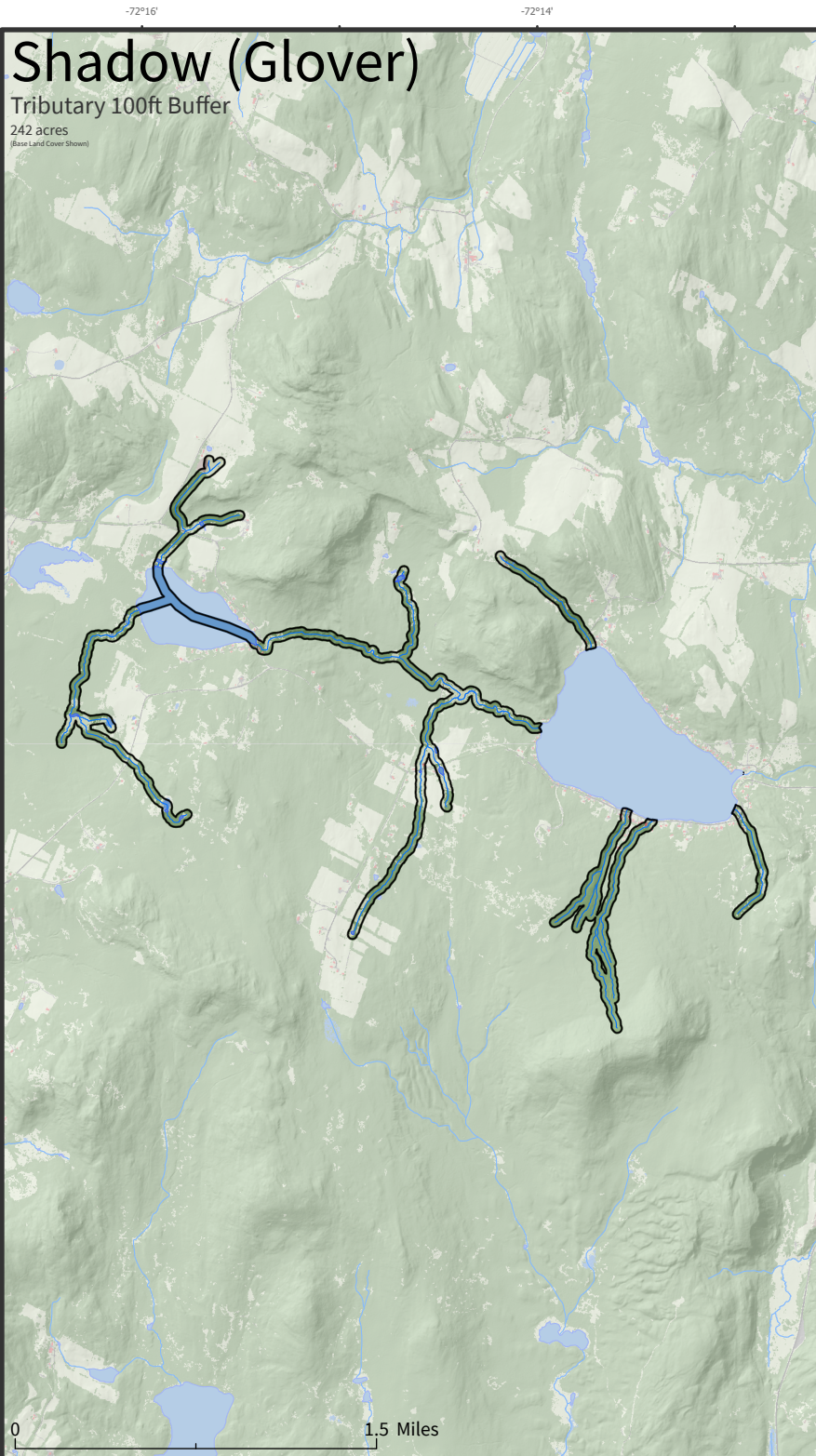


*Top-Down: A traditional land cover mapping approach - land cover is mapped as the uppermost land cover class.
**Bottom-Up: A new land cover mapping approach - land cover is mapped as the lowermost land cover class. This approach results in improved mapping of features overlapped/observed by other features.
See UVM SAL High-Resolution Land Cover 2022 Report for more detail.

Shadow (Glover)

Tributary 100ft Buffer

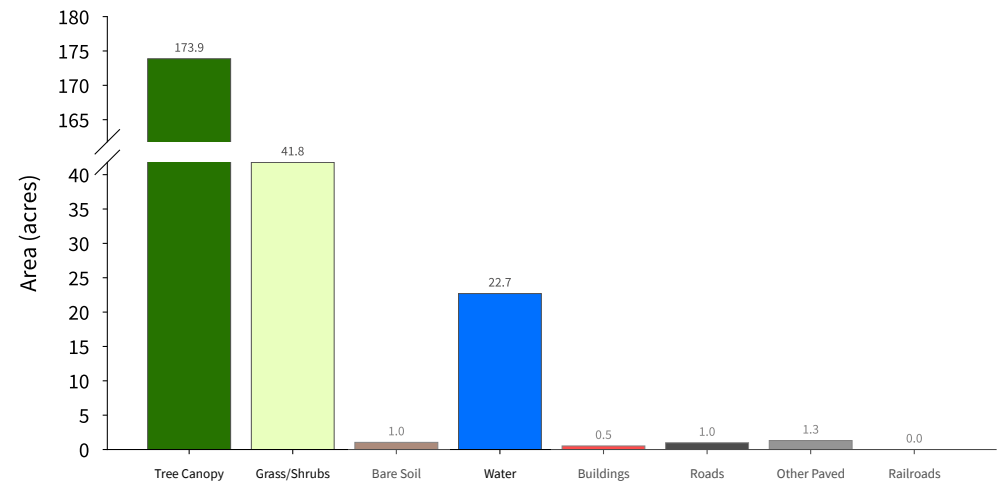
242 acres
(Base Land Cover Shown)



External Data Sources: UWM SAL High-Resolution (0.5m) Land Cover Dataset, VCGI Vermont State LIDAR, National Hydrography Dataset

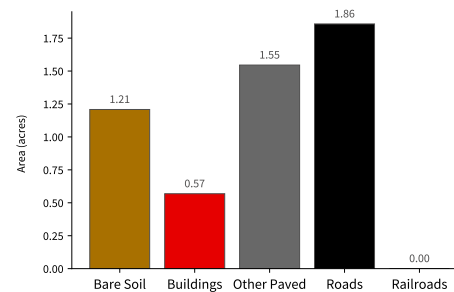
High-Resolution Land Cover Summary

Base Land Cover (Top-Down*)

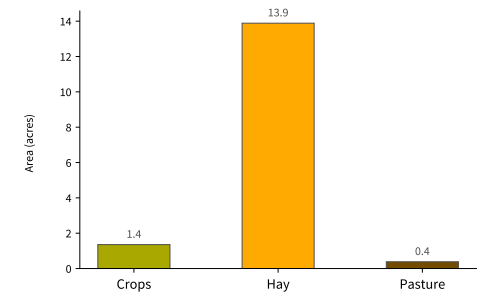


Supplemental Land Cover

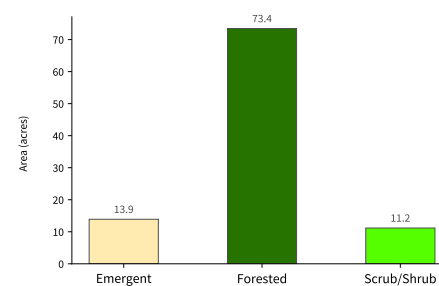
Impervious Surfaces (5.18 acres - 2.1 % of total) (Bottom-Up**)



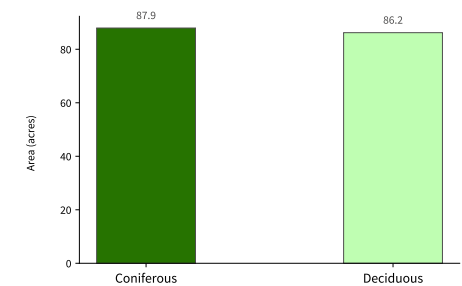
Agriculture (15.62 acres - 6.5 % of total)



Wetlands (98.52 acres - 40.7 % of total)



Tree Canopy (174.13 acres - 72 % of total)



*Top-Down: A traditional land cover mapping approach - land cover is mapped as the uppermost land cover class.

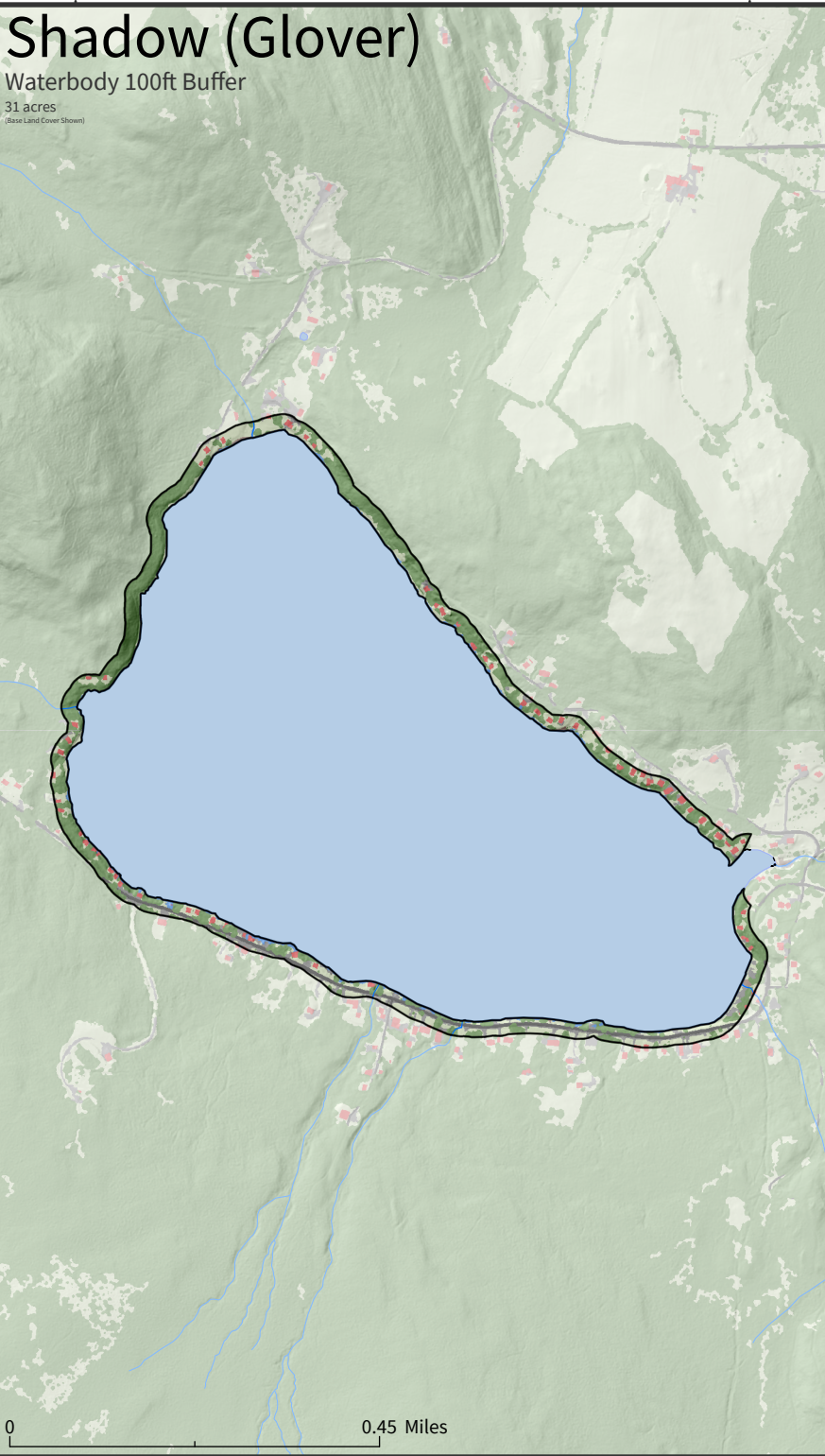
**Bottom-Up: A new land cover mapping approach - land cover is mapped as the lowermost land cover class. This approach results in improved mapping of features overlapped/obscured by other features.
See UWM SAL High-Resolution Land Cover 2015 Report for more detail.

Shadow (Glover)

Waterbody 100ft Buffer

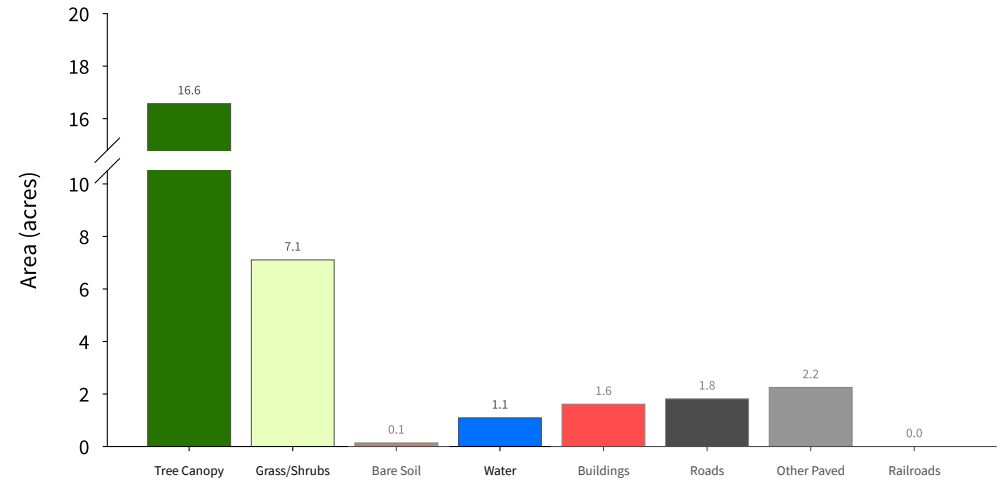
31 acres

(Base Land Cover Shown)



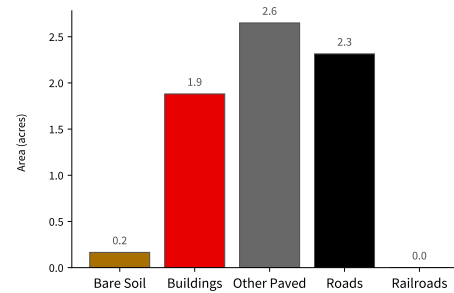
High-Resolution Land Cover Summary

Base Land Cover (Top-Down*)



Supplemental Land Cover

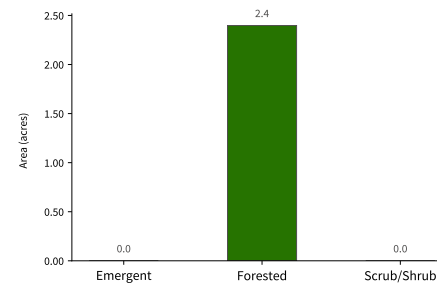
Impervious Surfaces (7.01 acres - 22.6 % of total) (Bottom-Up**)



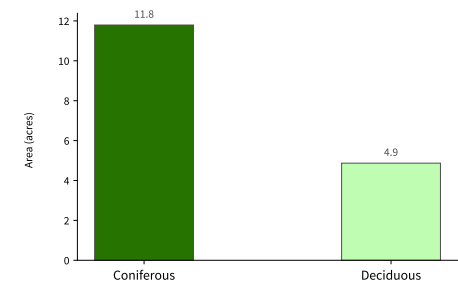
Agriculture (0 acres - 0 % of total)

No Agricultural Land Cover Mapped in this Area

Wetlands (2.4 acres - 7.7 % of total)



Tree Canopy (16.66 acres - 53.8 % of total)



*Top-Down: A traditional land cover mapping approach - land cover is mapped as the uppermost land cover class.

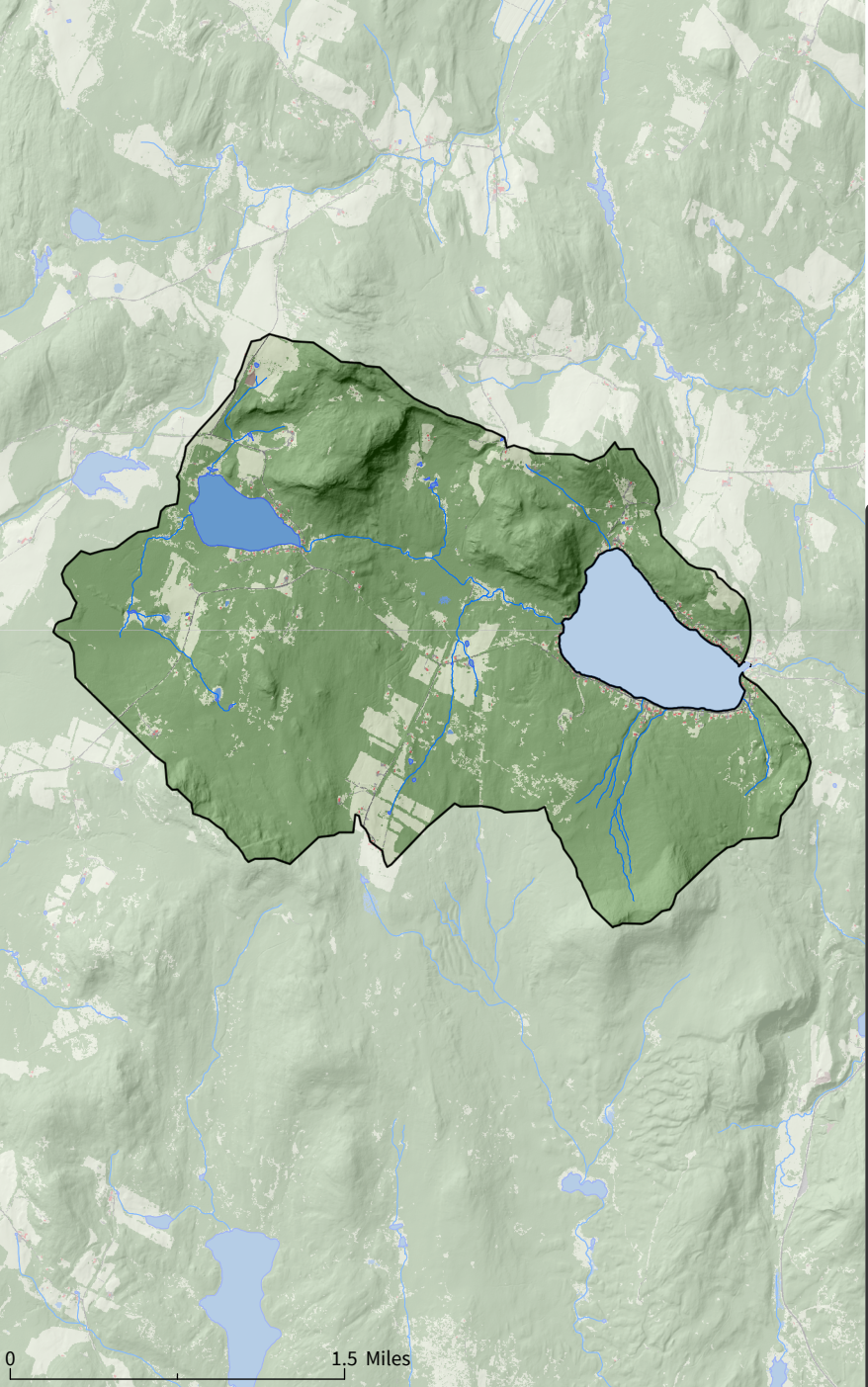
**Bottom-Up: A new land cover mapping approach - land cover is mapped as the lowermost land cover class. This approach results in improved mapping of features overlapped/observed by other features.

See UWM SAL High-Resolution Land Cover 2025 Report for more detail.

Shadow (Glover)

Watershed

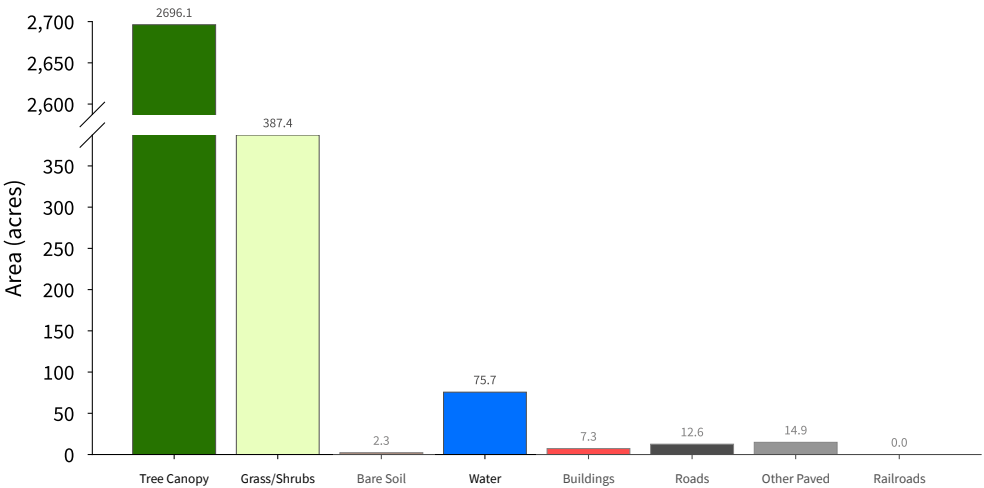
3,196 acres
(Base Land Cover Shown)



External Data Sources: UWM SAL High-Resolution (0.5m) Land Cover Dataset, VCGI Vermont State LIDAR, National Hydrography Dataset

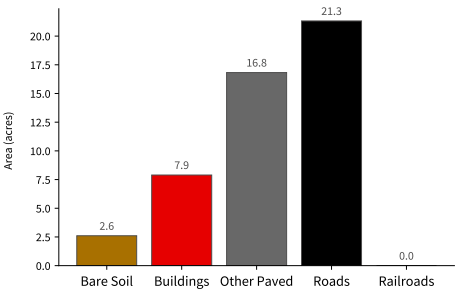
High-Resolution Land Cover Summary

Base Land Cover (Top-Down*)

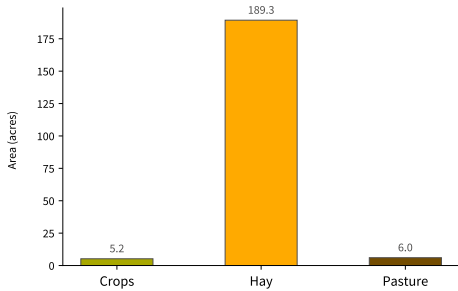


Supplemental Land Cover

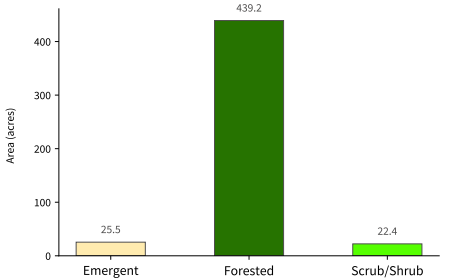
Impervious Surfaces (48.64 acres - 1.5% of total) (Bottom-Up**)



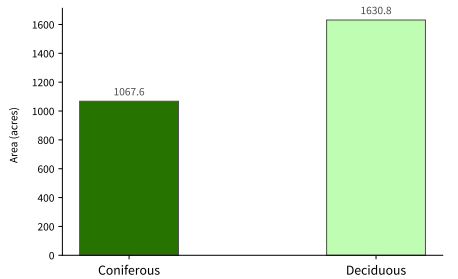
Agriculture (200.6 acres - 6.3% of total)



Wetlands (487.09 acres - 15.2% of total)



Tree Canopy (2,698.34 acres - 84.4% of total)



*Top-Down: A traditional land cover mapping approach - land cover is mapped as the uppermost land cover class.

**Bottom-Up: A new land cover mapping approach - land cover is mapped as the lowermost land cover class. This approach results in improved mapping of features overlapped/obscured by other features.

See UWM SAL High-Resolution Land Cover 2022 Report for more detail.