

Biodegradable Erosion Control Products



Mike Everhart

Eastern Erosion Control & Stormwater Specialist

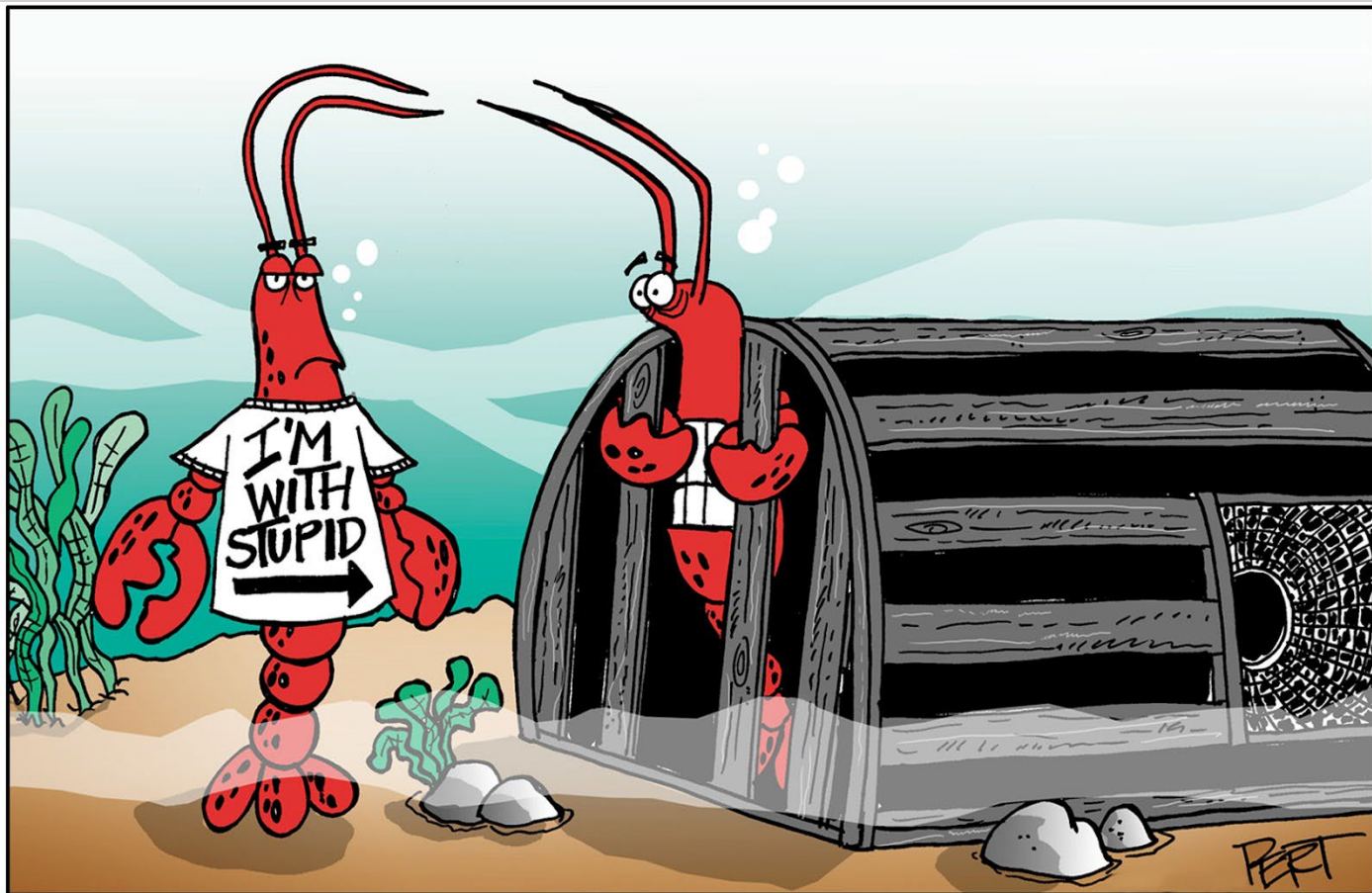
ME, NH, VT, Eastern Mass & RI

603-767-1263

mike.everhart@ejprescott.com

Biodegradable Erosion Control Products

Yep, I'm from Maine





- Coir matting: 400 -1,000gsm

Biodegradable Erosion Control Products

Coir Products



Coir logs: 12"-20" dia
7 and 9lb density
coir or polypropylene netting



Biodegradable Erosion Control Products

Coir Products



Biodegradable Erosion Control Products

Coir Products



Shoreline Stabilization, Choosing the right Solution

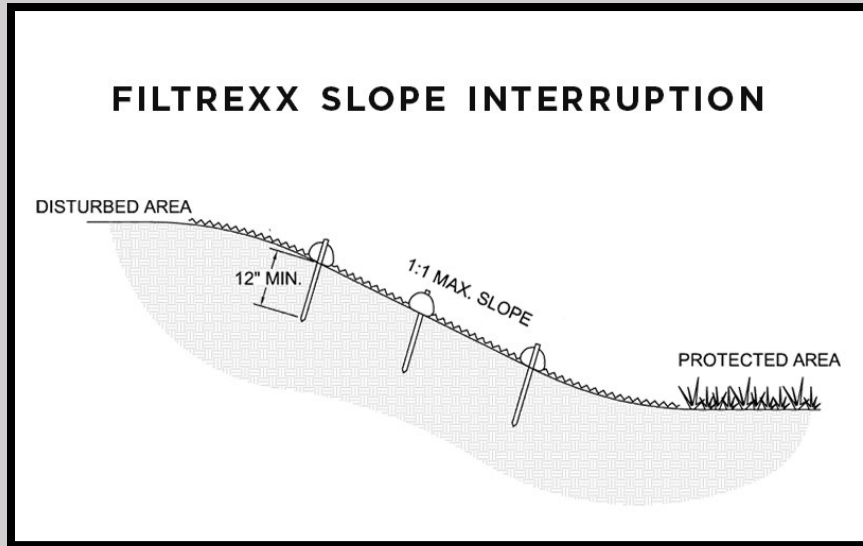


Biodegradable Erosion Control Products

Bio-Soxx & Bio-Wattle

Biodegradable Erosion Control Products

Compost Soxx & Straw Wattles



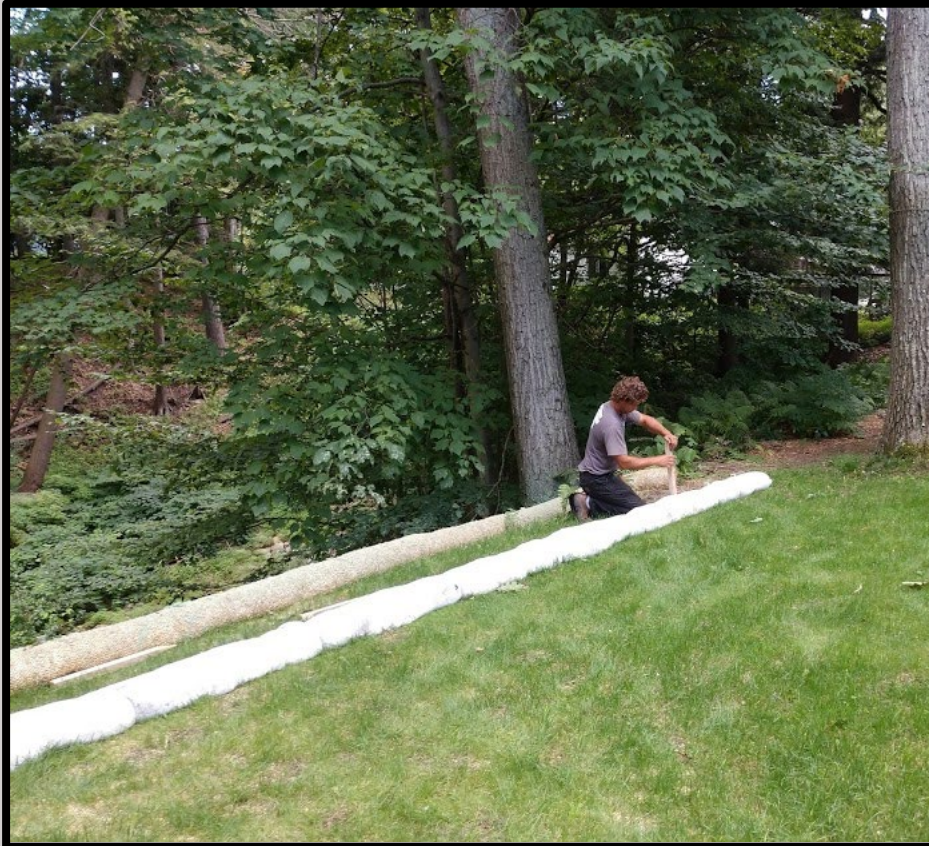
- Can use on 1:1 Slopes
- Better Trapping & Removal of Sediment & Pollutants
- More Intimate Ground Contact
- No Trenching
- Can be Installed on Frozen Ground

- Slows Runoff Velocity
- Reduce Slope Length
- Can be used in Environmentally Sensitive Areas



Biodegradable Erosion Control Products

Compost Soxx & Straw Wattles



Biodegradable Erosion Control Products

Compost Soxx & Straw Wattles





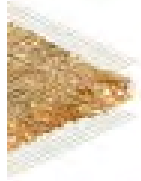



Biodegradable Erosion Control Products

Erosion Control Blankets

Biodegradable Erosion Control Products

Erosion Control Blankets

	TEMPORARY			
	BIONET	BIONET		
				
	S75BN	S150BN	SC150BN	C125BN
Longevity	12 mo.	12 mo.	18 mo.	24 mo.
Applications	Low Flow Channels 4:1-3:1 Slopes	Moderate Flow Channels 3:1-2:1 Slopes	Medium Flow Channels 2:1-1:1 Slopes	High-Flow Channels 1:1 and Greater Slopes
Design Permissible Shear Stress lbs./ft ² (Pa)	Unvegetated 1.60 (76)	Unvegetated 1.85 (88)	Unvegetated 2.10 (100)	Unvegetated 2.35 (112)
Design Permissible Velocity ft/s (m/s)	Unvegetated 5.00 (1.52)	Unvegetated 6.00 (1.83)	Unvegetated 8.00 (2.44)	Unvegetated 10.00 (3.05)

Biodegradable Erosion Control Products

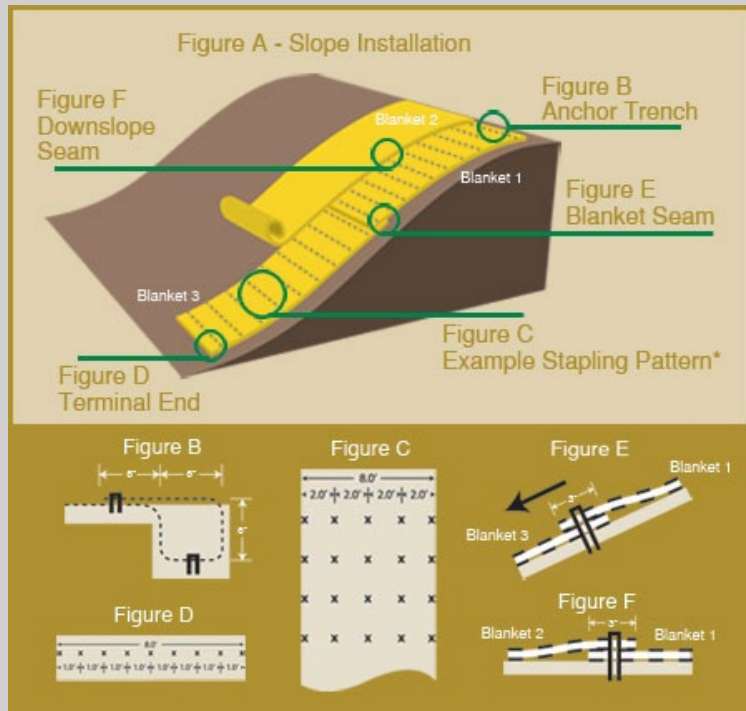
Erosion Control Blankets

- Temporary
- Single Net Straw
- Double Net Straw
- Double Net Straw/Coconut
- Double Net Coconut
- Excelsior
- Photodegradable
- Biodegradable

- Short Term Temporary
- Long Term Temporary
- 45 days
- 36 months

Biodegradable Erosion Control Products

Proper Installation of Erosion Control Blankets

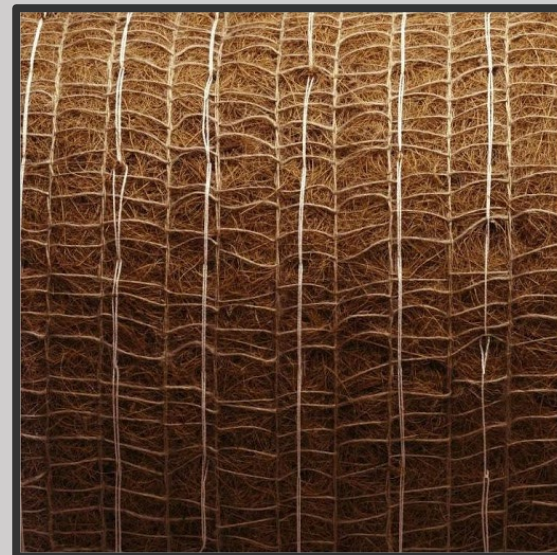
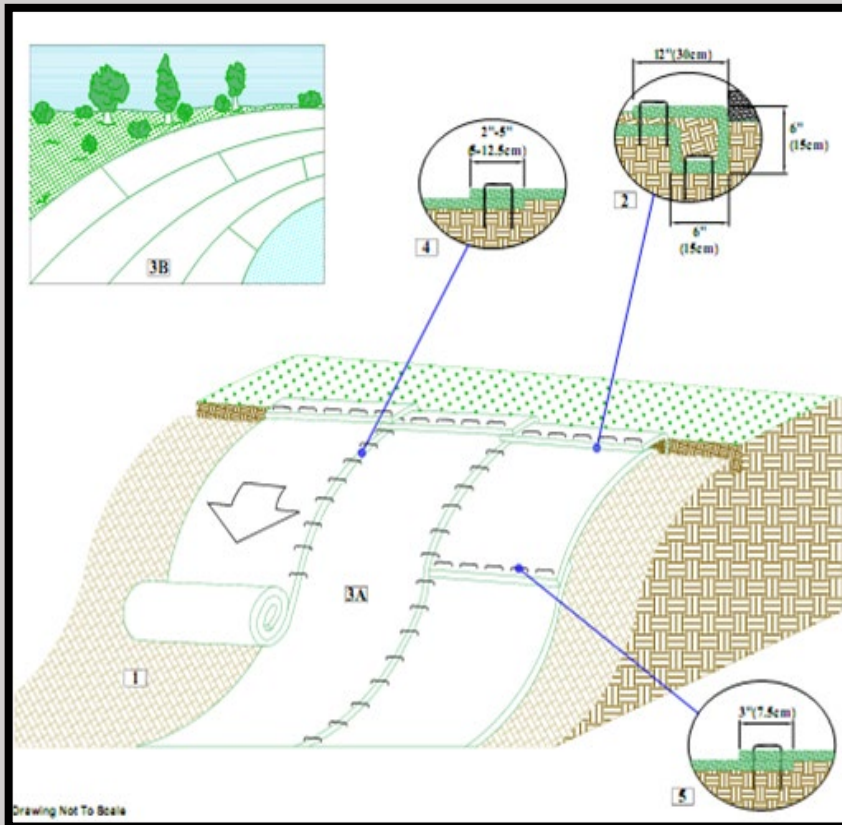


Step to take when using ECB's

- **Start 1-2 feet behind crest of slope**
- **Trench for keying in Blanket**
- **Seeding and amendments prior to installation of ECB**
- **Staple ECB in Trench**
- **Backfill Trench**
- **Roll ECB down slope**
- **Pull ECB tight while stapling down slope**
- **Verify 100% ground contact**

Biodegradable Erosion Control Products

Erosion Control Blankets



Biodegradable Erosion Control Products

Erosion Control Blankets



Biodegradable Erosion Control Products

Erosion Control Blankets



Biodegradable Erosion Control Products

Erosion Control Blankets



Biodegradable Erosion Control Products

Hydraulic Erosion Control Mulches

Biodegradable Erosion Control Products

Hydraulically Applied Erosion Control Mulches



Hydorseeding





Biodegradable Erosion Control Products

Hydraulically Applied Erosion Control Mulches

Products are Environmentally Friendly...

- **Biodegradable** mulch/matrix media
- **100% recycled** wood and paper fibers
- **Biodegradable** mulch fibers and tackifiers
- **Phyto-sanitized** wood fibers – *Thermally-refined™*
No pathogens and weed contaminants
- **Non-toxic** – passing EPA ecotoxicity testing protocol



Biodegradable Erosion Control Products

Hydraulically Applied Erosion Control Mulches

Thermally refined



Atmospherically refined



Fiber magnified 45 times by independent lab specializing in fiber analysis

Biodegradable Erosion Control Products

Hydraulically Applied Erosion Control Mulches

Seeding Mulches

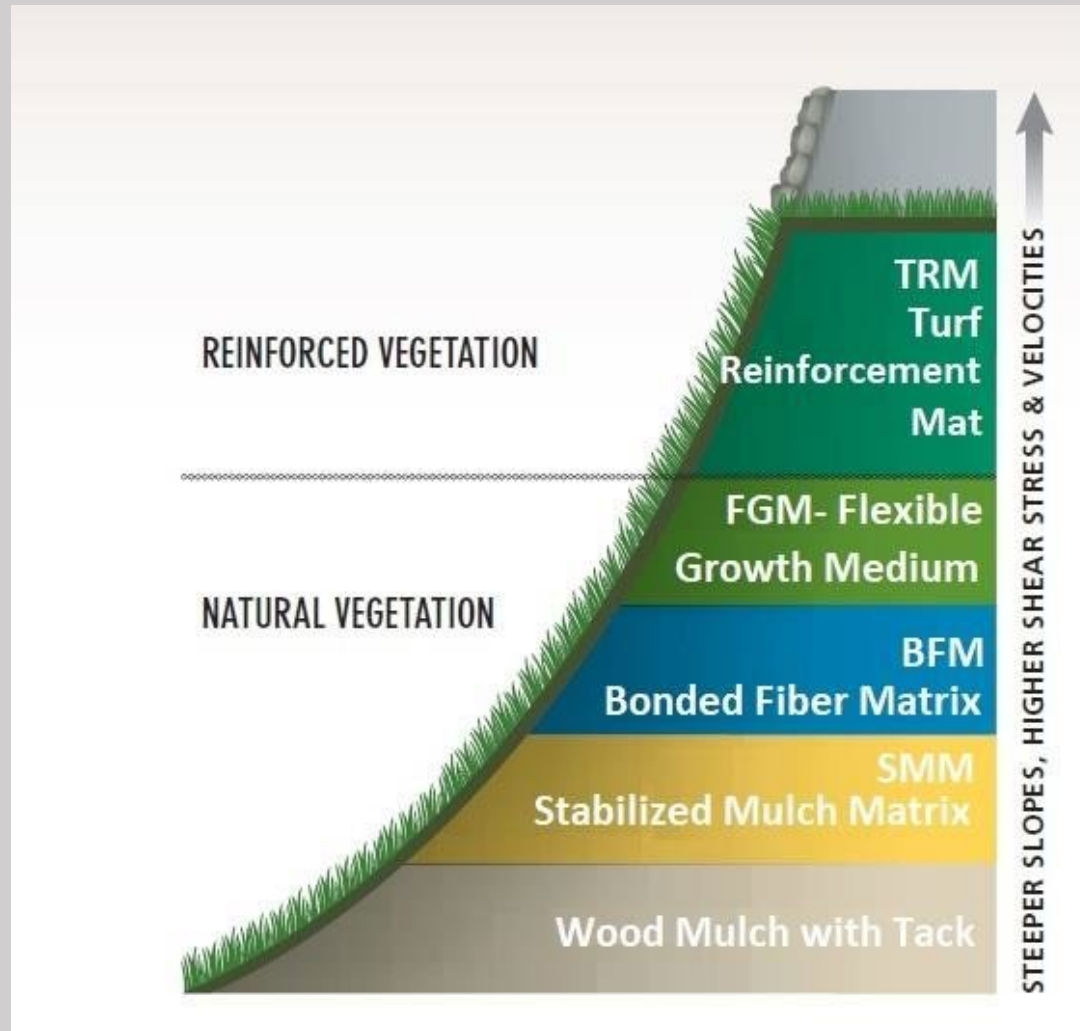
- Cellulose
- Wood Fiber
- Blend 70/30
- Pelletized fiber
- Straw fiber

Erosion Control Mulches

- Stabilized Mulch Matrix (SMM)(SFM)
- Bonded Fiber Matrix (BFM)
- Engineered Fiber Matrix (EFM)
- Fiber Reinforced Matrix (FRM)(FGM)

Biodegradable Erosion Control Products

Hydraulically Applied Erosion Control Mulches



Biodegradable Erosion Control Products

Hydraulically Applied Erosion Control Mulches



Biodegradable Erosion Control Products

Hydraulically Applied Erosion Control Mulches

Sensitive Areas Near Water Bodies



Biodegradable Erosion Control Products

Hydraulically Applied Erosion Control Mulches

Sensitive Areas Near Water Bodies

Erosion Control
Blanket



Erosion Control
Hydroseeding

Biodegradable Erosion Control Products

Hydraulically Applied Erosion Control Mulches

Sensitive Areas Near Water Bodies



What is the best form of Erosion Control?

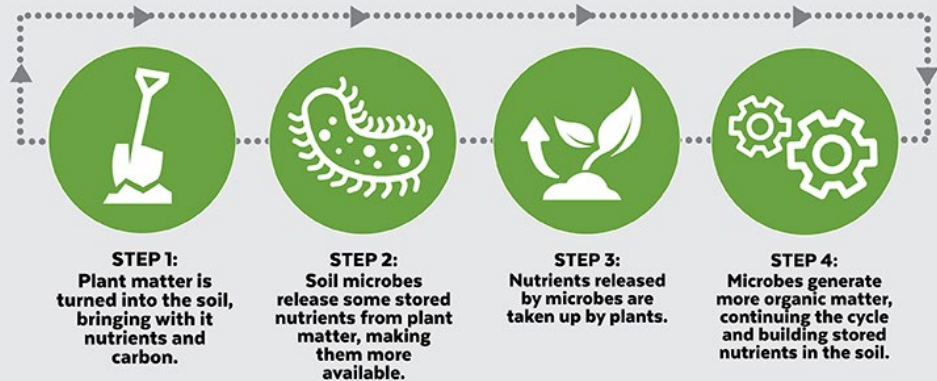


Sustainable vegetation!

Sustainability Comes From Nutrient Cycling

Requires a healthy soil as the infrastructure to support and nurture vegetation

HOW MICROBES INCREASE SOIL NUTRIENT AVAILABILITY & BUILD SOIL ORGANIC MATTER



Organic Matter and Biological Activity

- Organic Matter (OM) is the foundation for all biological life in the soil
- OM provides structure and water-holding capacity
- Without biological life, the OM is not capable of building a solid foundation







ProGanics™ Biotic Soil Media™

"The World's Most Advanced Engineered Soil Media"

- **ProGanics™ Biotic Soil Media™** is a patented composite of Engineered Soil Media™ (ESM™) designed to accelerate development of soils and substrates with low organic matter, low nutrient levels, and limited biological activity.
- **ProGanics** improves your soil profile and composition by adding organic matter, biostimulants, and soil building components to create a more favorable growing environment.



Gorham, ME



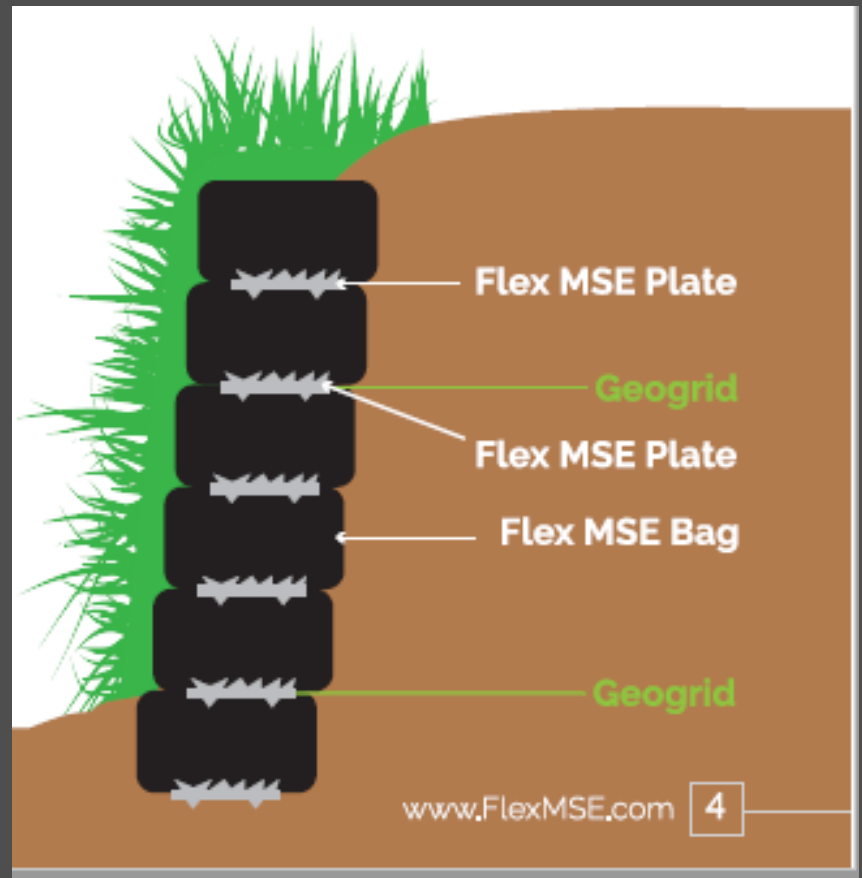
Gorham, ME







10m (33ft) tall municipal roadway



- Can be installed from horizontal to 90° (1:1 - 1:10 typ.)
- Able to withstand almost unlimited differential settlement
- ASTM rated 120 year design life with a 75 year warranty
- Only Geosynthetic System in the world with an EPD/LCA
- Uses 97% less GHG than concrete, 98.5% less than steel
- 50% recycled content, 100% recyclable
- Installs in 2/3 the time, at 60% the cost of other systems







ECO-FRIENDLY INFRASTRUCTURE
LANGFORD, BC



Biodegradable Erosion Control Products

THANK YOU

Mike Everhart

Eastern Erosion Control & Stormwater Specialist

ME, NH, VT, Eastern Mass & RI

603-767-1263

mike.everhart@ejprescott.com