

Tactics Legend

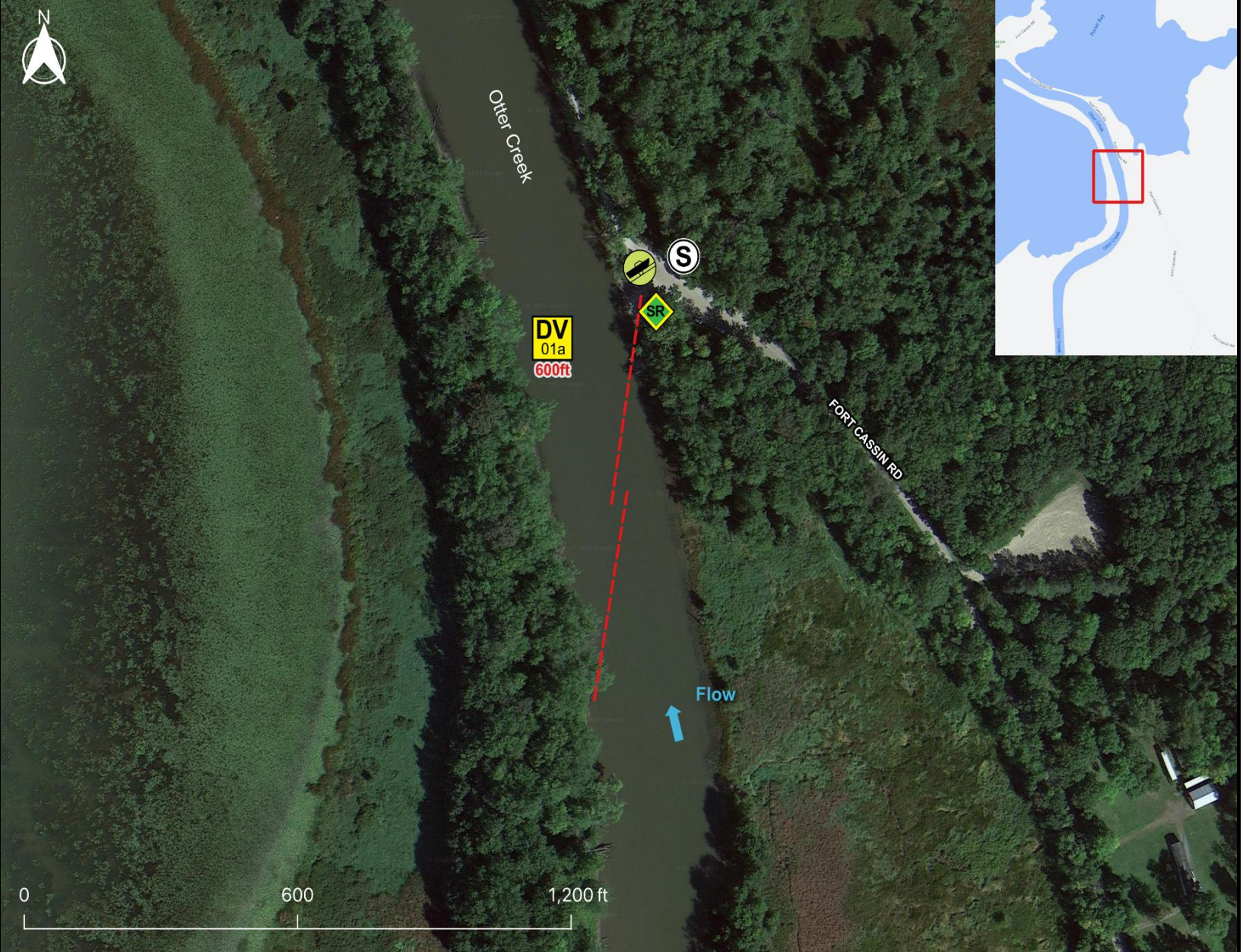
- DF** Deflection Booming
- DV** Diversion Booming
- EX** Exclusion Booming
- FO** Free Oil Recovery
- PR** Passive Recovery
- SR** Shoreside Recovery
- S** Staging Area
-  Boat Ramp
-  Kayak Ramp
-  Railroad
-  Protected-Water Boom
-  Protected-Water Boom (Ebb Tide)
-  Snare/ Sorbent Boom

Equipment - All Tactics

Boom(ft)	600
Marine anchors	3
Shore anchors	2
Sorbent Boom(ft)	0
FO Recovery Sys	0
Shore Responders	2
Boat Responders	2
Boats	2

Version

9/20/2022



Tactics Deployment, Responder Safety, and GRS Data Information



Always consider on-scene conditions before deploying GRS tactics. Responder safety should always be the first priority.

Location

Latitude: 44° 13' 11"  
 Longitude: 73° 18' 57"  
 State: Vermont

**EPA Lake Champlain River Geographic Response Strategy**

**Otter Creek LC-VT-13A**

Tactic #	Purpose	Response Equipment	Deployment Resources	Deployment Notes
<b>DV-01a</b> 	Redirect spilled oil from one location or direction of travel to a specific site for recovery.	600 ft protected water boom 3 marine anchor system 2 shoreline anchor system	2 shore responders 1 response boats 1 boat operators	Deploy boom as depicted to divert incoming oil to the collection site. Anchor every 200-300'. Adjust configuration as necessary to reduce entrainment. Set up shoreside recovery. Deploy shoreside anchor first.
	<b>Testing Date</b>	<b>N Tested</b>		
<b>SR-01a</b> 	Remove spilled oil that has been diverted to a designated recovery site accessible from shore.	1 skimming system 1 storage tank or bladder 1 hoses, pumps, fittings	2 shore responders	Set up shoreside recovery tactic at general location depicted on map.
<b>N/A</b>	<b>Testing Date</b>	<b>Tested</b>		

Local contacts

All VT Fire Departments	Call 911
EPA Region 1 Tribal Program	617-918-1123
Missisquoi National Wildlife Refuge	802-868-4781
National Response Center	800-424-8802
VT Comm. on Native American Affairs	802-779-7015
VT DEC (24-Hour)	800-641-5005
VT Drinking Water & Groundwater	802-741-5311
VT Emergency Mgmt & Homeland Security	800-347-0488
VT Fish & Wildlife Dept (Essex)	802-878-1564
VT Hazmat Response Team	800-641-5005
VT Div of Historical Preservation	802-272-2509
Champlain Water District (24/7)	802-864-7454



Otter Creek at site of DV-01a and Fort Cassin Boat Ramp (top).

Resources Protected

<b>Fish</b>	No available data
<b>Birds</b>	No available data
<b>Threat/End. Species</b>	Rare Species (Includes Vermont's Rare and Uncommon Animals), Rare, Threatened, and Endangered Species Habitat, Species of Special Concern
<b>Cultural/Historical Resources</b>	Historical/Archaeological Sites, Native American Tribal Lands
<b>Human Use</b>	Boat Ramp
<b>Land Management</b>	Conservation Area, State Park
<b>Riverine</b>	No available data

Site photo provided for reference

Navigational Hazards

Lake and river conditions such as flow rate and flood stage vary depending on the time of year and heavy rain or snowfall.  
 If ice is present GRS tactics and strategies must be reevaluated.  
 Vessel operators should have local knowledge and experience operating in riverine environments.

Special Considerations

Survey site prior to deployment and modify deployment tactics and techniques as appropriate based on observed river/lake conditions.

Tactics Legend

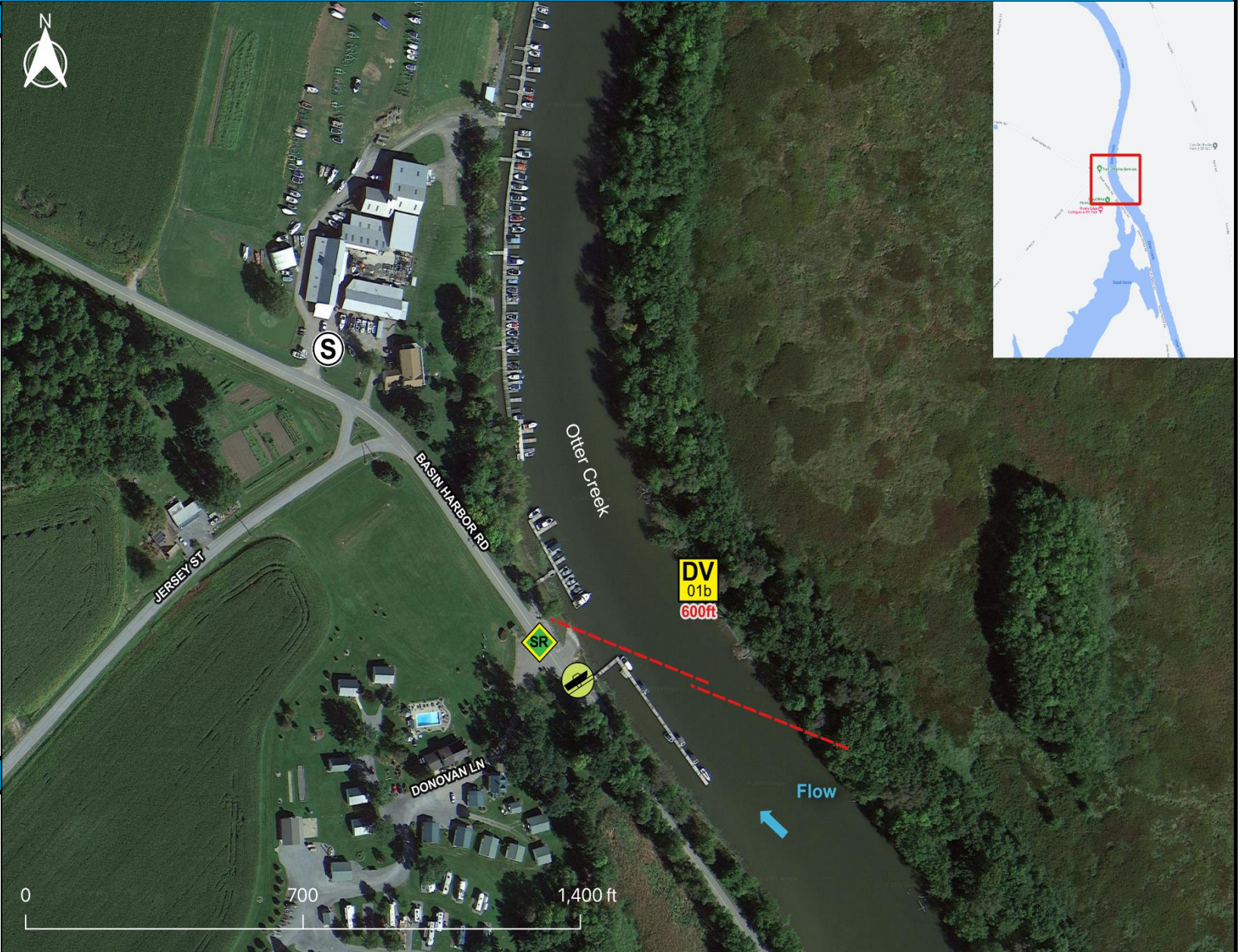
- DF** Deflection Booming
- DV** Diversion Booming
- EX** Exclusion Booming
- FO** Free Oil Recovery
- PR** Passive Recovery
- SR** Shoreside Recovery
- S** Staging Area
-  Boat Ramp
-  Kayak Ramp
-  Railroad
-  Protected-Water Boom
-  Protected-Water Boom (Ebb Tide)
-  Snare/ Sorbent Boom

Equipment - All Tactics

Boom(ft)	600
Marine anchors	3
Shore anchors	2
Sorbent Boom(ft)	0
FO Recovery Sys	0
Shore Responders	2
Boat Responders	2
Boats	2

Version

9/20/2022



Tactics Deployment, Responder Safety, and GRS Data Information



Always consider on-scene conditions before deploying GRS tactics. Responder safety should always be the first priority.

Location

Latitude: 44° 11' 11"  
 Longitude: 73° 18' 42"  
 State: Vermont

**EPA Lake Champlain River Geographic Response Strategy**

**Otter Creek LC-VT-13B**

Tactic #	Purpose	Response Equipment	Deployment Resources	Deployment Notes
<b>DV-01b</b> 	Redirect spilled oil from one location or direction of travel to a specific site for recovery.	600 ft protected water boom 3 marine anchor system 2 shoreline anchor system	2 shore responders 1 response boats 1 boat operators	Deploy boom as depicted to divert incoming oil to the collection site. Anchor every 200-300'. Adjust configuration as necessary to reduce entrainment. Set up shoreside recovery. Deploy shoreside anchor first.
		Testing Date	N Tested	
<b>SR-01b</b> 	Remove spilled oil that has been diverted to a designated recovery site accessible from shore.	1 skimming system 1 storage tank or bladder 1 hoses, pumps, fittings	2 shore responders	Set up shoreside recovery tactic at general location depicted on map.
		N/A	Testing Date	Tested

Local contacts

All VT Fire Departments	Call 911
EPA Region 1 Tribal Program	617-918-1123
Missisquoi National Wildlife Refuge	802-868-4781
National Response Center	800-424-8802
VT Comm. on Native American Affairs	802-779-7015
VT DEC (24-Hour)	800-641-5005
VT Drinking Water & Groundwater	802-741-5311
VT Emergency Mgmt & Homeland Security	800-347-0488
VT Fish & Wildlife Dept (Essex)	802-878-1564
VT Hazmat Response Team	800-641-5005
VT Div of Historical Preservation	802-272-2509
Champlain Water District (24/7)	802-864-7454



Otter Creek at site of DV-01b and Rivers Edge Boat Ramp.

Site photo provided for reference

Resources Protected

<b>Fish</b>	No available data
<b>Birds</b>	No available data
<b>Threat/End. Species</b>	Rare Species (Includes Vermont's Rare and Uncommon Animals), Rare, Threatened, and Endangered Species Habitat, Species of Special Concern
<b>Cultural/Historical Resources</b>	Historical/Archaeological Sites, Native American Tribal Lands
<b>Human Use</b>	Boat Ramp
<b>Land Management</b>	Conservation Area, State Park
<b>Riverine</b>	No available data

Navigational Hazards

Lake and river conditions such as flow rate and flood stage vary depending on the time of year and heavy rain or snowfall.  
 If ice is present GRS tactics and strategies must be reevaluated.  
 Vessel operators should have local knowledge and experience operating in riverine environments.

Special Considerations

Survey site prior to deployment and modify deployment tactics and techniques as appropriate based on observed river/lake conditions.

Tactics Legend

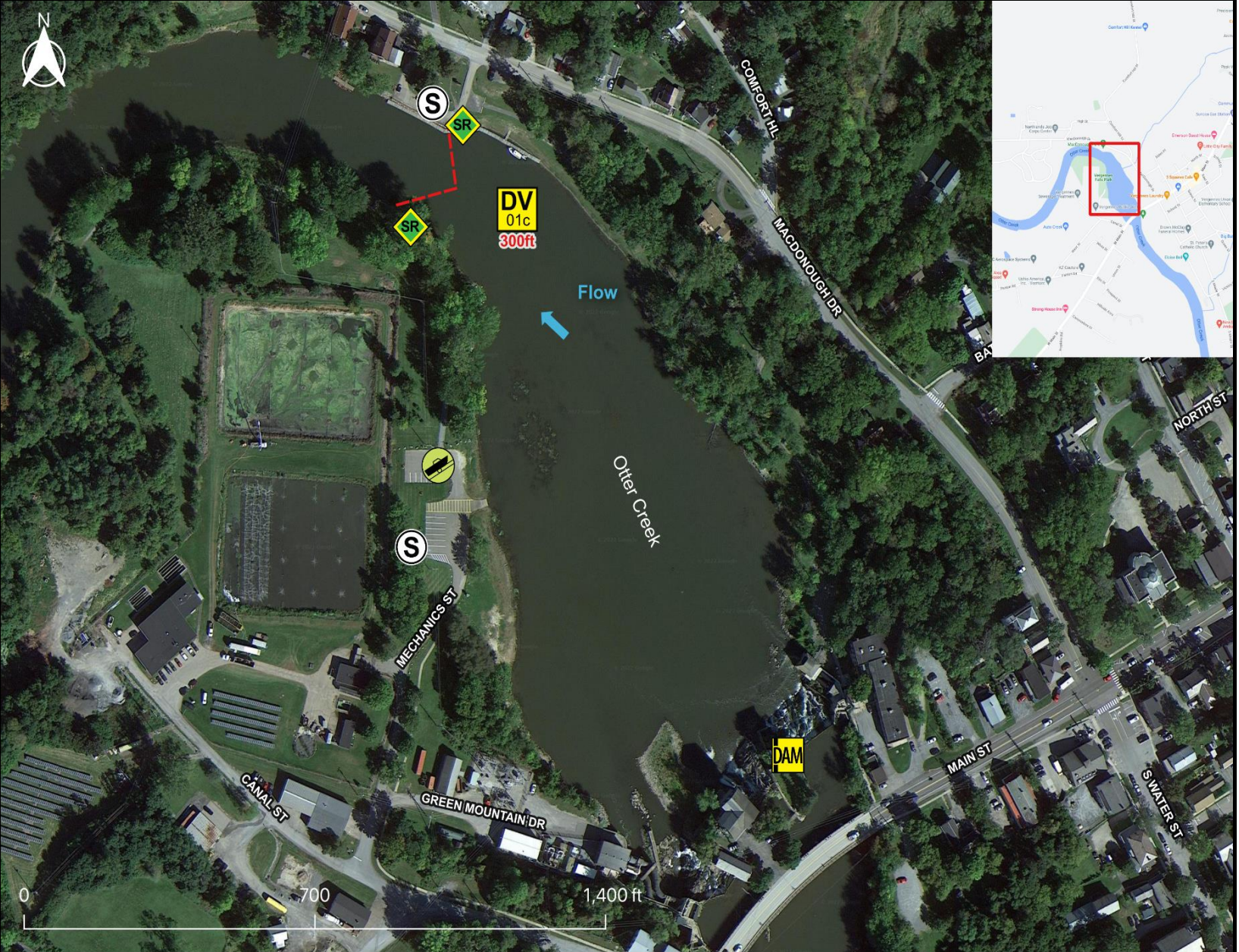
- DF** Deflection Booming
- DV** Diversion Booming
- EX** Exclusion Booming
- FO** Free Oil Recovery
- PR** Passive Recovery
- SR** Shoreside Recovery
- S** Staging Area
- Boat Ramp
- Kayak Ramp
- Railroad
- Protected-Water Boom
- Protected-Water Boom (Ebb Tide)
- Snare/ Sorbent Boom

Equipment - All Tactics

Boom(ft)	300
Marine anchors	1
Shore anchors	2
Sorbent Boom(ft)	0
FO Recovery Sys	0
Shore Responders	2
Boat Responders	2
Boats	2

Version

9/20/2022



Tactics Deployment, Responder Safety, and GRS Data Information



Always consider on-scene conditions before deploying GRS tactics. Responder safety should always be the first priority.

Location

Latitude: 44° 10' 7"  
 Longitude: 73° 15' 26"  
 State: Vermont

**EPA Lake Champlain River Geographic Response Strategy**

**Otter Creek LC-VT-13C**

Tactic #	Purpose	Response Equipment	Deployment Resources	Deployment Notes
<p>DV-01c</p> 	<p>Redirect spilled oil from one location or direction of travel to a specific site for recovery.</p>	<p>300 ft protected water boom 1 marine anchor system 2 shoreline anchor system</p>	<p>2 shore responders 1 response boats 1 boat operators</p>	<p>Deploy boom as depicted to divert incoming oil to the collection site. Anchor every 200-300'. Adjust configuration as necessary to reduce entrainment. Set up shoreside recovery. Deploy shoreside anchor first.</p>
<p>SR-01c</p> 	<p>Remove spilled oil that has been diverted to a designated recovery site accessible from shore.</p>	<p>2 skimming system 2 storage tank or bladder 2 hoses, pumps, fittings</p>	<p>2 shore responders</p>	<p>Set up shoreside recovery tactic at general location depicted on map.</p>
		<p>N/A</p>	<p>Testing Date</p>	<p>Tested</p>



Local contacts

All VT Fire Departments	Call 911
EPA Region 1 Tribal Program	617-918-1123
Missisquoi National Wildlife Refuge	802-868-4781
National Response Center	800-424-8802
VT Comm. on Native American Affairs	802-779-7015
VT DEC (24-Hour)	800-641-5005
VT Drinking Water & Groundwater	802-741-5311
VT Emergency Mgmt & Homeland Security	800-347-0488
VT Fish & Wildlife Dept (Essex)	802-878-1564
VT Hazmat Response Team	800-641-5005
VT Div of Historical Preservation	802-272-2509
Champlain Water District (24/7)	802-864-7454



Otter Creek at site of DV-01c and Vergennes Falls.

Resources Protected

<b>Fish</b>	No available data
<b>Birds</b>	No available data
<b>Threat/End. Species</b>	Rare Species (Includes Vermont's Rare and Uncommon Animals), Rare, Threatened, and Endangered Species Habitat, Species of Special Concern
<b>Cultural/Historical Resources</b>	Historical/Archaeological Sites, Native American Tribal Lands
<b>Human Use</b>	Boat Ramp
<b>Land Management</b>	Conservation Area, State Park
<b>Riverine</b>	No available data

Site photo provided for reference

Navigational Hazards

Lake and river conditions such as flow rate and flood stage vary depending on the time of year and heavy rain or snowfall.  
 If ice is present GRS tactics and strategies must be reevaluated.  
 Vessel operators should have local knowledge and experience operating in riverine environments.

Special Considerations

Survey site prior to deployment and modify deployment tactics and techniques as appropriate based on observed river/lake conditions.