

EPA Lake Champlain River Geographic Response Strategy

Shelburne LC-VT-11A

Tactics Legend

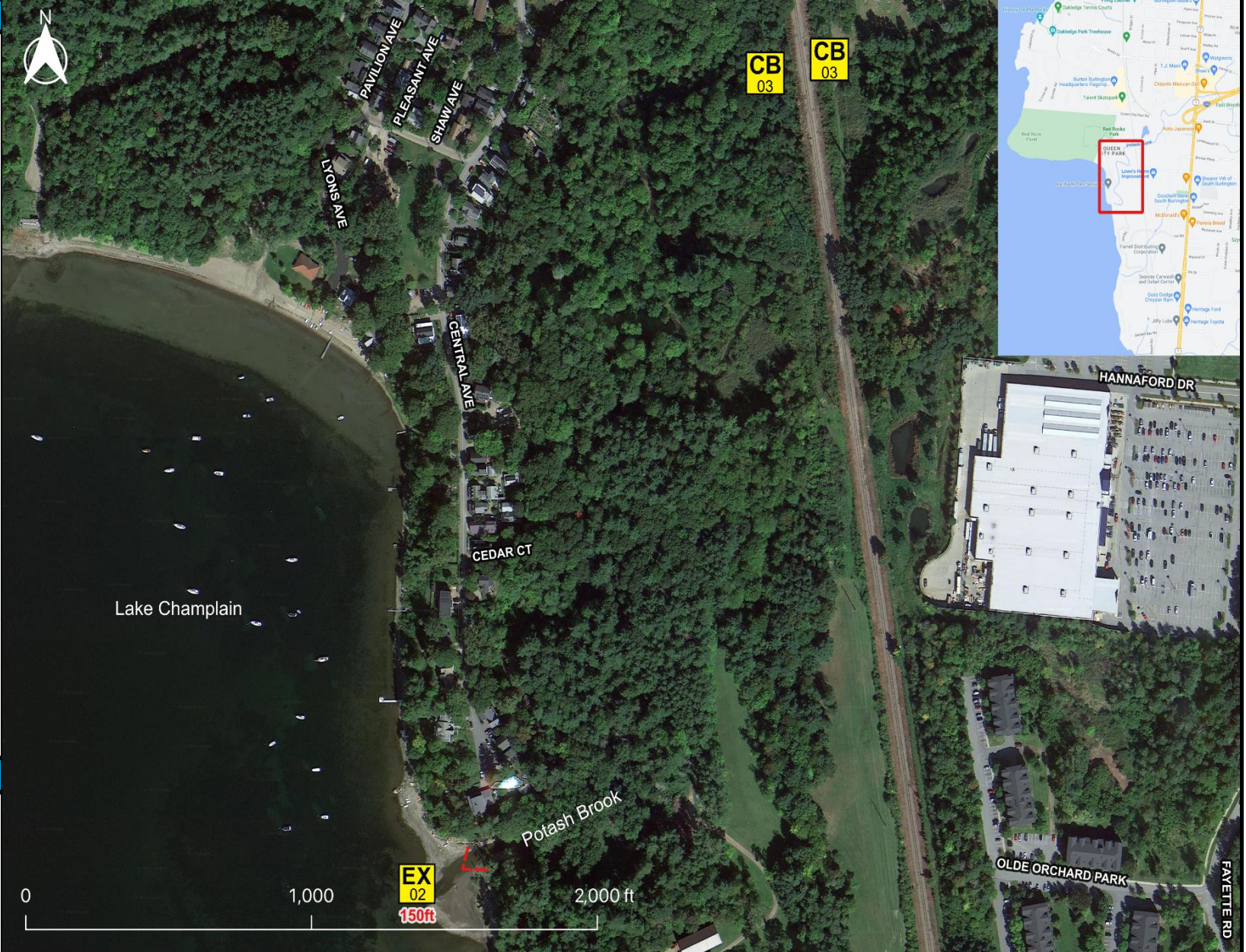
- DF** Deflection Booming
- DV** Diversion Booming
- EX** Exclusion Booming
- FO** Free Oil Recovery
- PR** Passive Recovery
- SR** Shoreside Recovery
- S** Staging Area
-  Boat Ramp
-  Kayak Ramp
-  Railroad
-  Protected-Water Boom
-  Protected-Water Boom (Ebb Tide)
-  Snare/ Sorbent Boom

Equipment - All Tactics

Boom(ft)	150
Marine anchors	1
Shore anchors	2
Sorbent Boom(ft)	0
FO Recovery Sys	0
Shore Responders	2
Boat Responders	2
Boats	2

Version

9/20/2022



Tactics Deployment, Responder Safety, and GRS Data Information

Always consider on-scene conditions before deploying GRS tactics. Responder safety should always be the first priority.

Location

Latitude: 44° 26' 28"
 Longitude: 73° 13' 10"
 State: Vermont

EPA Lake Champlain River Geographic Response Strategy

Shelburne LC-VT-11A

Tactic #	Purpose	Response Equipment	Deployment Resources	Deployment Notes
EX-02 EX	Prohibit oil slicks from entering a sensitive area.	150 ft protected water boom 1 marine anchor system 2 shoreline anchor system	2 shore responders 1 response boats 1 boat operators	Deploy boom as depicted to exclude oil from sensitive areas. Anchor every 200-300'. Adjust configuration as necessary to reduce entrainment. Deploy shoreside anchor first. Readjust boom angle as needed to reduce entrainment
		Testing Date	N Tested	
CB-03 CB	Prevent oil that has entered drainage systems from impacting waterways and sensitive areas.	2 inflatable plug, sand bag, or plywood	2 shore responders	If accessible deploy appropriate size inflatable culvert plug in the culvert. Monitor to ensure blocking integrity. Without culvert plug, place plywood or similar sheeting material across the culvert. Use plastic sheeting to ensure the seal. Stack sandbags against plywood to counter outflow pressure.
		N/A	Testing Date	Tested

Local contacts

All VT Fire Departments	Call 911
EPA Region 1 Tribal Program	617-918-1123
Missisquoi National Wildlife Refuge	802-868-4781
National Response Center	800-424-8802
VT Comm. on Native American Affairs	802-779-7015
VT DEC (24-Hour)	800-641-5005
VT Drinking Water & Groundwater	802-741-5311
VT Emergency Mgmt & Homeland Security	800-347-0488
VT Fish & Wildlife Dept (Essex)	802-878-1564
VT Hazmat Response Team	800-641-5005
VT Div of Historical Preservation	802-272-2509
Champlain Water District (24/7)	802-864-7454



*Mouth of Potash Brook at Shelburne Bay (EX-02).
View looks east.*



*Potash Brook at Rail line and site of CB-03 looking west.
Brook flows from bottom to top of image.*

Resources Protected

Fish	No available data
Birds	Nesting Sites, Shorebirds, Wildlife and Migratory Bird Habitat
Threat/End. Species	Rare Species (Includes Vermont's Rare and Uncommon Animals)
Cultural/Historical Resources	Historical/Archaeological Sites, Native American Tribal Lands
Human Use	Boat Ramp, Critical Infrastructure, Park, Public Drinking Water Supply, Water Intake
Land Management	Conservation Area
Riverine	No available data

Navigational Hazards

Lake and river conditions such as flow rate and flood stage vary depending on the time of year and heavy rain or snowfall.
If ice is present GRS tactics and strategies must be reevaluated.
Vessel operators should have local knowledge and experience operating in riverine environments.

Special Considerations

Survey site prior to deployment and modify deployment tactics and techniques as appropriate based on observed river/lake conditions.

Tactics Legend

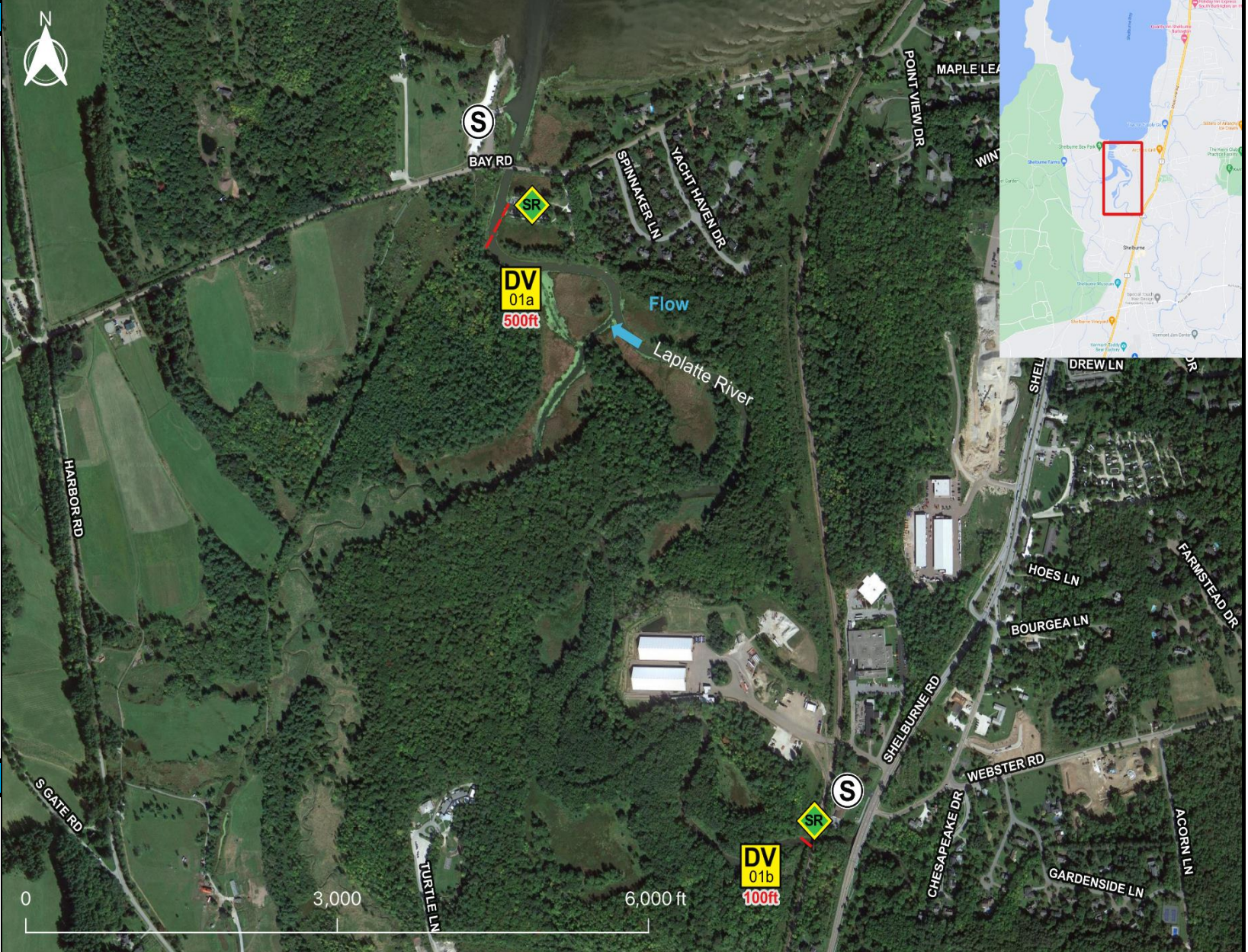
- DF** Deflection Booming
- DV** Diversion Booming
- EX** Exclusion Booming
- FO** Free Oil Recovery
- PR** Passive Recovery
- SR** Shoreside Recovery
- S** Staging Area
-  Boat Ramp
-  Kayak Ramp
-  Railroad
-  Protected-Water Boom
-  Protected-Water Boom (Ebb Tide)
-  Snare/ Sorbent Boom

Equipment - All Tactics

Boom(ft)	600
Marine anchors	2
Shore anchors	4
Sorbent Boom(ft)	0
FO Recovery Sys	0
Shore Responders	2
Boat Responders	2
Boats	2

Version

9/20/2022



Tactics Deployment, Responder Safety, and GRS Data Information




Always consider on-scene conditions before deploying GRS tactics. Responder safety should always be the first priority.

Location

Latitude: 44° 23' 44"
 Longitude: 73° 13' 52"
 State: Vermont

EPA Lake Champlain River Geographic Response Strategy

Shelburne LC-VT-11B

Tactic #	Purpose	Response Equipment	Deployment Resources	Deployment Notes
DV-01a 	Redirect spilled oil from one location or direction of travel to a specific site for recovery.	500 ft protected water boom 2 marine anchor system 2 shoreline anchor system	2 shore responders 1 response boats 1 boat operators	Deploy boom as depicted to divert incoming oil to the collection site. Anchor every 200-300'. Adjust configuration as necessary to reduce entrainment. Set up shoreside recovery. Deploy shoreside anchor first.
		Testing Date	N Tested	
SR-01a 	Remove spilled oil that has been diverted to a designated recovery site accessible from shore.	2 skimming system 2 storage tank or bladder 2 hoses, pumps, fittings	2 shore responders	Set up shoreside recovery tactic at general location depicted on map.
		N/A	Testing Date	
DV-01b 	Redirect spilled oil from one location or direction of travel to a specific site for recovery.	100 ft protected water boom marine anchor system 2 shoreline anchor system	2 shore responders 1 response boats 1 boat operators	Deploy boom as depicted to divert incoming oil to the collection site. Anchor every 200-300'. Adjust configuration as necessary to reduce entrainment. Set up shoreside recovery. Deploy shoreside anchor first.
		Testing Date	N Tested	

Local contacts

All VT Fire Departments	Call 911
EPA Region 1 Tribal Program	617-918-1123
Missisquoi National Wildlife Refuge	802-868-4781
National Response Center	800-424-8802
VT Comm. on Native American Affairs	802-779-7015
VT DEC (24-Hour)	800-641-5005
VT Drinking Water & Groundwater	802-741-5311
VT Emergency Mgmt & Homeland Security	800-347-0488
VT Fish & Wildlife Dept (Essex)	802-878-1564
VT Hazmat Response Team	800-641-5005
VT Div of Historical Preservation	802-272-2509
Champlain Water District (24/7)	802-864-7454



Mouth of Laplatte River at Shelburne Bay and site of DV-01a. Shelburne Bay Boat Ramp at upper left.



Laplatte River at RT 7 and rail line (site of DV-01b). Access road at left. View looks east.

Resources Protected

Fish	No available data
Birds	Nesting Sites, Shorebirds, Wildlife and Migratory Bird Habitat
Threat/End. Species	Rare Species (Includes Vermont's Rare and Uncommon Animals)
Cultural/Historical Resources	Historical/Archaeological Sites, Native American Tribal Lands
Human Use	Boat Ramp, Critical Infrastructure, Park, Public Drinking Water Supply, Water Intak
Land Management	Conservation Area
Riverine	No available data

Navigational Hazards

Lake and river conditions such as flow rate and flood stage vary depending on the time of year and heavy rain or snowfall.
 If ice is present GRS tactics and strategies must be reevaluated.
 Vessel operators should have local knowledge and experience operating in riverine environments.

Special Considerations

Survey site prior to deployment and modify deployment tactics and techniques as appropriate based on observed river/lake conditions.