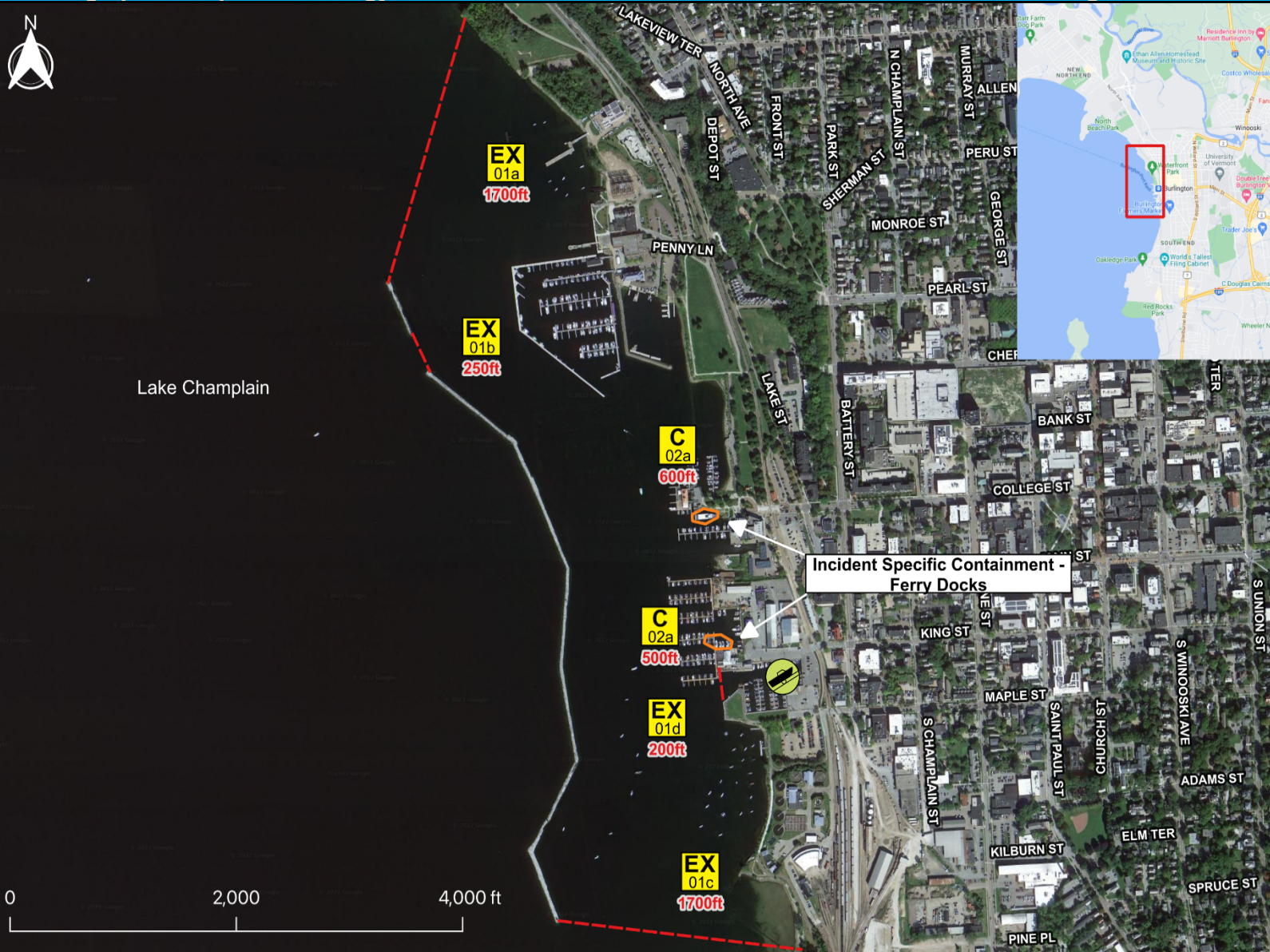


Tactics Legend

- DF** Deflection Booming
- DV** Diversion Booming
- EX** Exclusion Booming
- FO** Free Oil Recovery
- PR** Passive Recovery
- SR** Shoreside Recovery
- S** Staging Area
-  Boat Ramp
-  Kayak Ramp
-  Railroad
-  Protected-Water Boom
-  Protected-Water Boom (Ebb Tide)
-  Snare/ Sorbent Boom



Lake Champlain



Incident Specific Containment - Ferry Docks

Equipment - All Tactics

Boom(ft)	4950
Marine anchors	23
Shore anchors	12
Sorbent Boom(ft)	0
FO Recovery Sys	0
Shore Responders	4
Boat Responders	2
Boats	2

Version
9/20/2022

Tactics Deployment, Responder Safety, and GRS Data Information

Always consider on-scene conditions before deploying GRS tactics. Responder safety should always be the first priority.

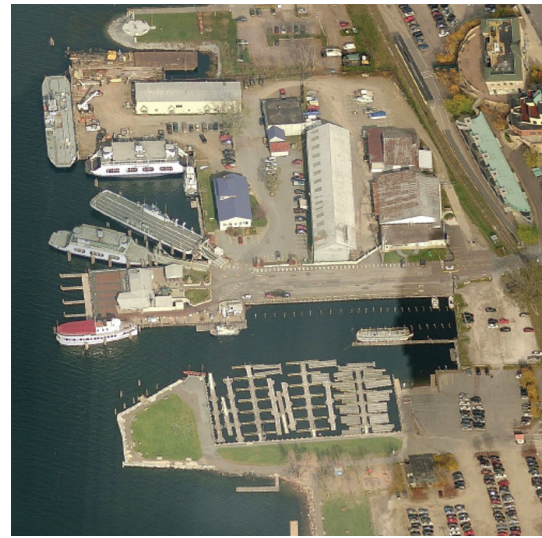
Location

Latitude: 44° 28' 37"
Longitude: 73° 13' 25"
State: Vermont

Tactic #	Purpose	Response Equipment	Deployment Resources	Deployment Notes
EX-01a EX	Prohibit oil slicks from entering a sensitive area.	1700 ft protected water boom 8 marine anchor system 2 shoreline anchor system	4 shore responders 2 response boats 2 boat operators	Deploy boom as depicted to exclude oil from sensitive areas. Anchor every 200-300'. Adjust configuration as necessary to reduce entrainment. Deploy shoreside anchor first.
		Testing Date	N Tested	
EX-01b EX	Prohibit oil slicks from entering a sensitive area.	250 ft protected water boom 1 marine anchor system 2 shoreline anchor system	2 shore responders 1 response boats 1 boat operators	Deploy boom as depicted to exclude oil from sensitive areas. Anchor every 200-300'. Adjust configuration as necessary to reduce entrainment. Deploy shoreside anchor first.
		Testing Date	N Tested	
EX-01c EX	Prohibit oil slicks from entering a sensitive area.	1700 ft protected water boom 8 marine anchor system 2 shoreline anchor system	4 shore responders 2 response boats 2 boat operators	Deploy boom as depicted to exclude oil from sensitive areas. Anchor every 200-300'. Adjust configuration as necessary to reduce entrainment. Deploy shoreside anchor first.
		Testing Date	N Tested	
EX-01d EX	Prohibit oil slicks from entering a sensitive area.	200 ft protected water boom 1 marine anchor system 2 shoreline anchor system	2 shore responders 1 response boats 1 boat operators	Deploy boom as depicted to exclude oil from sensitive areas. Anchor every 200-300'. Adjust configuration as necessary to reduce entrainment. Deploy shoreside anchor first.
		Testing Date	N Tested	
C-02a C	Isolate a spill and control spreading to reduce impact to the surrounding environment and concentrate oil to facilitate recovery.	500 ft protected water boom 2 marine anchor system 2 shoreline anchor system	2 shore responders 1 response boats 1 boat operators	Place protected-water boom in the water around or in the vicinity of the source. Sorbent boom and/or pads can be placed inside boom to recover oil. Tend as necessary based on wind and water flow. Deploy shoreside anchor first.
		Testing Date	N Tested	
C-02a C	Isolate a spill and control spreading to reduce impact to the surrounding environment and concentrate oil to facilitate recovery.	600 ft protected water boom 3 marine anchor system 2 shoreline anchor system	2 shore responders 1 response boats 1 boat operators	Place protected-water boom in the water around or in the vicinity of the source. Sorbent boom and/or pads can be placed inside boom to recover oil. Tend as necessary based on wind and water flow. Deploy shoreside anchor first.
		Testing Date	N Tested	

Local contacts

All VT Fire Departments	Call 911
EPA Region 1 Tribal Program	617-918-1123
Missisquoi National Wildlife Refuge	802-868-4781
National Response Center	800-424-8802
VT Comm. on Native American Affairs	802-779-7015
VT DEC (24-Hour)	800-641-5005
VT Drinking Water & Groundwater	802-741-5311
VT Emergency Mgmt & Homeland Security	800-347-0488
VT Fish & Wildlife Dept (Essex)	802-878-1564
VT Hazmat Response Team	800-641-5005
VT Div of Historical Preservation	802-272-2509
Champlain Water District (24/7)	802-864-7454



Aerial view of King St. Ferry Dock and Perkins Pier Boat Ramp area.

Resources Protected

Fish	No available data
Birds	No available data
Threat/End. Species	Rare Species (Includes Vermont's Rare and Uncommon Animals), Species of Special Concern
Cultural/Historical Resources	Historical/Archaeological Sites, Native American Tribal Lands
Human Use	Boat Ramp, Critical Infrastructure, Park, Public Beach, Water Intake
Land Management	No available data
Riverine	No available data

Site photo provided for reference

Navigational Hazards

Lake and river conditions such as flow rate and flood stage vary depending on the time of year and heavy rain or snowfall.
 If ice is present GRS tactics and strategies must be reevaluated.
 Vessel operators should have local knowledge and experience operating in riverine environments.

Special Considerations

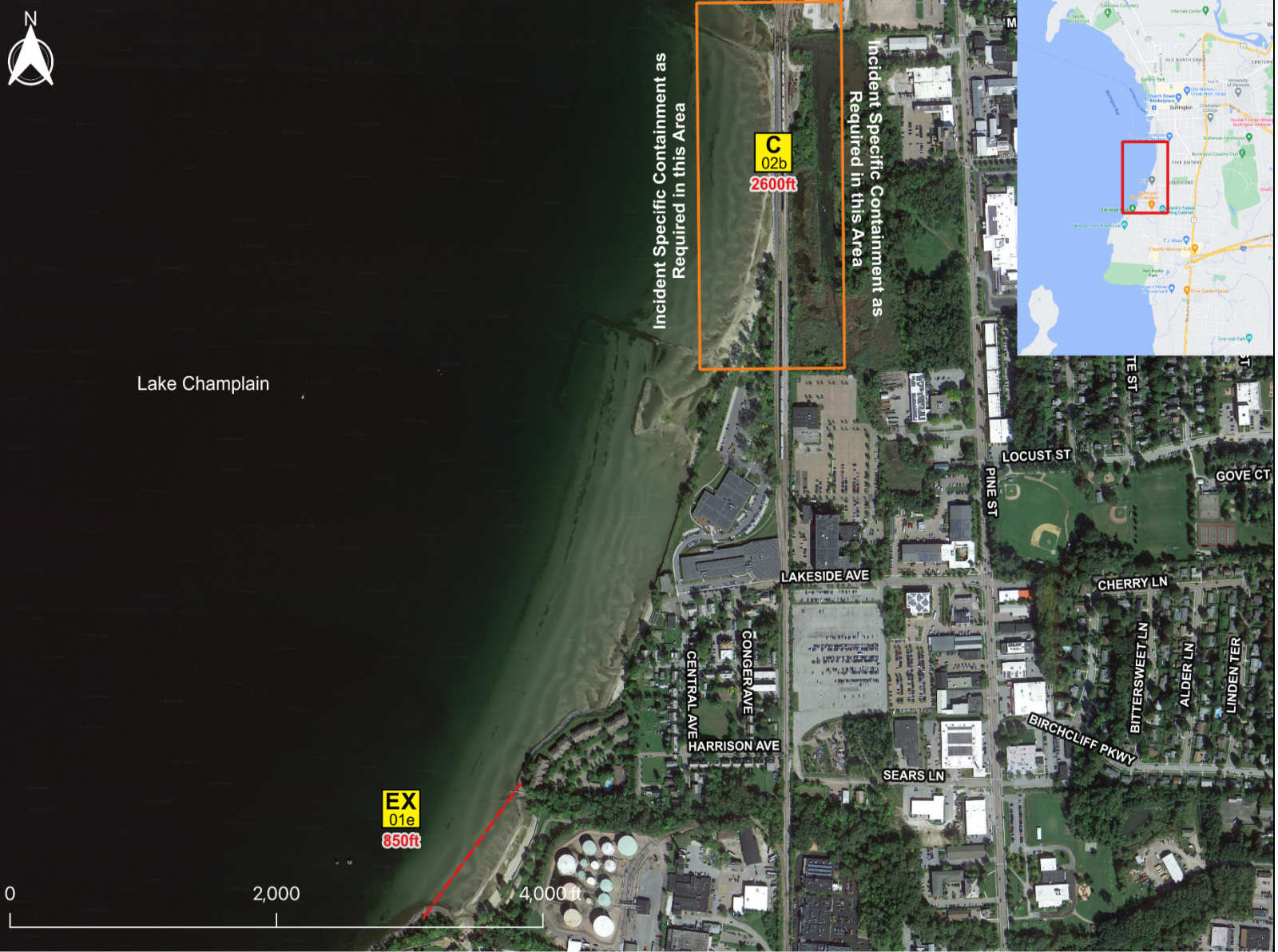
Survey site prior to deployment and modify deployment tactics and techniques as appropriate based on observed river/lake conditions.

Tactics Legend

- DF** Deflection Booming
- DV** Diversion Booming
- EX** Exclusion Booming
- FO** Free Oil Recovery
- PR** Passive Recovery
- SR** Shoreside Recovery
- S** Staging Area
-  Boat Ramp
-  Kayak Ramp
-  Railroad
-  Protected-Water Boom
-  Protected-Water Boom (Ebb Tide)
-  Snare/ Sorbent Boom

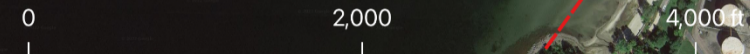


Lake Champlain



Equipment - All Tactics

Boom(ft)	3450
Marine anchors	17
Shore anchors	4
Sorbent Boom(ft)	0
FO Recovery Sys	0
Shore Responders	4
Boat Responders	2
Boats	2



Tactics Deployment, Responder Safety, and GRS Data Information







Always consider on-scene conditions before deploying GRS tactics. Responder safety should always be the first priority.

Location

Latitude: 44° 27' 45"
Longitude: 73° 13' 28"
State: Vermont

Version

9/20/2022

Tactic #	Purpose	Response Equipment	Deployment Resources	Deployment Notes
EX-01e 	Prohibit oil slicks from entering a sensitive area.	850 ft protected water boom 4 marine anchor system 2 shoreline anchor system	2 shore responders 1 response boats 1 boat operators	Deploy boom as depicted to exclude oil from sensitive areas. Anchor every 200-300'. Adjust configuration as necessary to reduce entrainment. Deploy shoreside anchor first.
		 Testing Date	 N Tested	
C-02b 	Isolate a spill and control spreading to reduce impact to the surrounding environment and concentrate oil to facilitate recovery.	2600 ft protected water boom 13 marine anchor system 2 shoreline anchor system	4 shore responders 2 response boats 2 boat operators	Place protected-water boom in the water around or in the vicinity of the source. Sorbent boom and/or pads can be placed inside boom to recover oil. Tend as necessary based on wind and water flow. Deploy shoreside anchor first.
		 Testing Date	 N Tested	

Local contacts

All VT Fire Departments	Call 911
EPA Region 1 Tribal Program	617-918-1123
Missisquoi National Wildlife Refuge	802-868-4781
National Response Center	800-424-8802
VT Comm. on Native American Affairs	802-779-7015
VT DEC (24-Hour)	800-641-5005
VT Drinking Water & Groundwater	802-741-5311
VT Emergency Mgmt & Homeland Security	800-347-0488
VT Fish & Wildlife Dept (Essex)	802-878-1564
VT Hazmat Response Team	800-641-5005
VT Div of Historical Preservation	802-272-2509
Champlain Water District (24/7)	802-864-7454



Site of EX-01e (left) near Global Partners LP Terminal.



Aerial view of rail line leading into Vermont Railway Yard. Site of Containment Booming (C-02b).

Resources Protected

Fish	No available data
Birds	No available data
Threat/End. Species	Rare Species (Includes Vermont's Rare and Uncommon Animals), Species of Special Concern
Cultural/Historical Resources	Historical/Archaeological Sites, Native American Tribal Lands
Human Use	Boat Ramp, Critical Infrastructure, Park, Public Beach, Water Intake
Land Management	No available data
Riverine	No available data

Navigational Hazards

Lake and river conditions such as flow rate and flood stage vary depending on the time of year and heavy rain or snowfall.
 If ice is present GRS tactics and strategies must be reevaluated.
 Vessel operators should have local knowledge and experience operating in riverine environments.

Special Considerations

The Pine St. Canal Superfund Site is located immediately adjacent to and east of the rail line. Survey site prior to deployment and modify deployment tactics and techniques as appropriate based on observed river/lake conditions.