

Tactics Legend

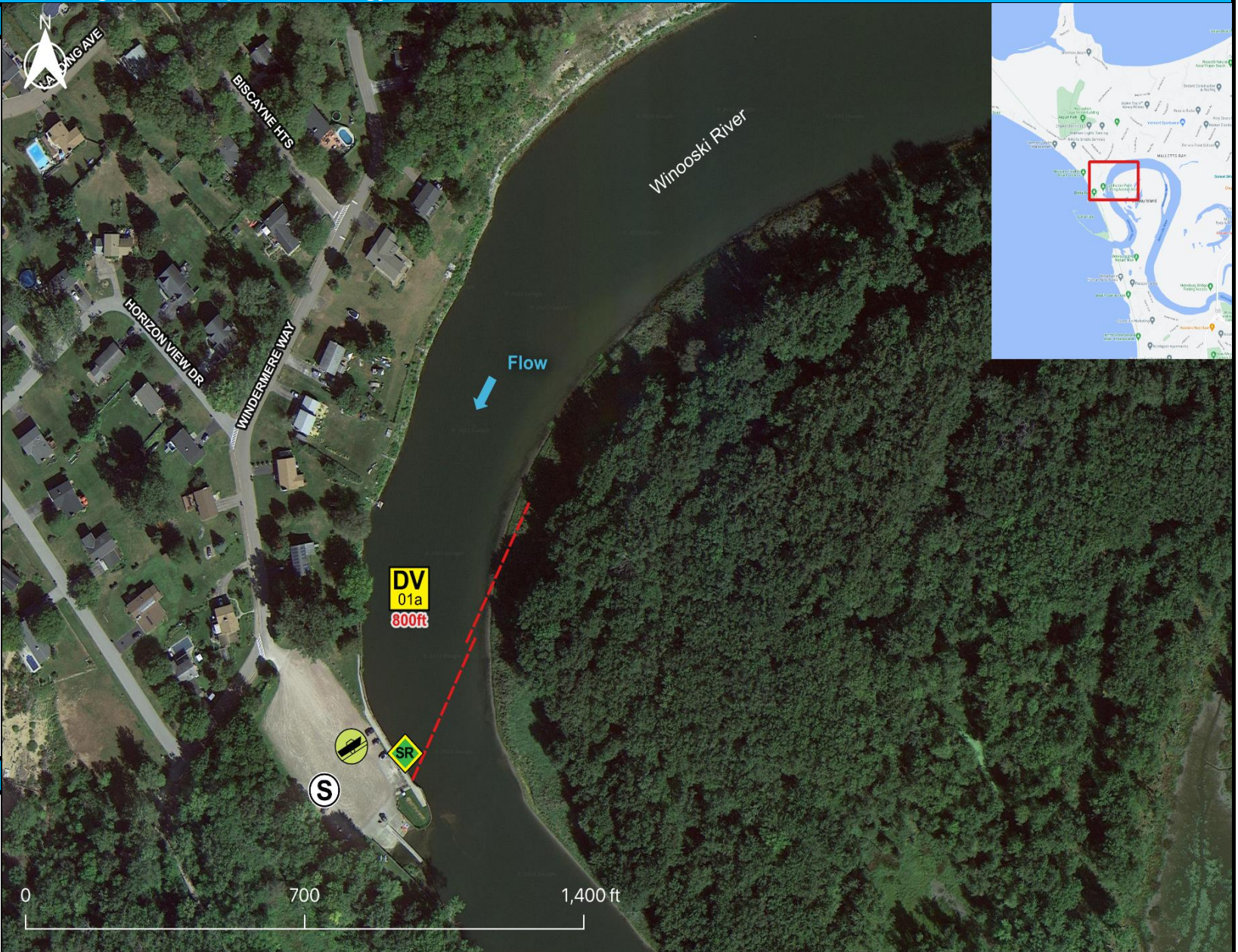
- DF** Deflection Booming
- DV** Diversion Booming
- EX** Exclusion Booming
- FO** Free Oil Recovery
- PR** Passive Recovery
- SR** Shoreside Recovery
- S** Staging Area
-  Boat Ramp
-  Kayak Ramp
-  Railroad
-  Protected-Water Boom
-  Protected-Water Boom (Ebb Tide)
-  Snare/ Sorbent Boom

Equipment - All Tactics

Boom(ft)	800
Marine anchors	4
Shore anchors	2
Sorbent Boom(ft)	0
FO Recovery Sys	0
Shore Responders	2
Boat Responders	2
Boats	2

Version

9/20/2022





Tactics Deployment, Responder Safety, and GRS Data Information

Always consider on-scene conditions before deploying GRS tactics. Responder safety should always be the first priority.

Location

Latitude: 44° 32' 15"
 Longitude: 73° 16' 28"
 State: Vermont

Tactic #	Purpose	Response Equipment	Deployment Resources	Deployment Notes
DV-01a 	Redirect spilled oil from one location or direction of travel to a specific site for recovery.	800 ft protected water boom 4 marine anchor system 2 shoreline anchor system	2 shore responders 1 response boats 1 boat operators	Deploy boom as depicted to divert incoming oil to the collection site. Anchor every 200-300'. Adjust configuration as necessary to reduce entrainment. Set up shoreside recovery. Deploy shoreside anchor first.
	Testing Date	N Tested		
SR-01a 	Remove spilled oil that has been diverted to a designated recovery site accessible from shore.	1 skimming system 1 storage tank or bladder 1 hoses, pumps, fittings	2 shore responders	Set up shoreside recovery tactic at general location depicted on map.
N/A	Testing Date	Tested		

Tactics Legend

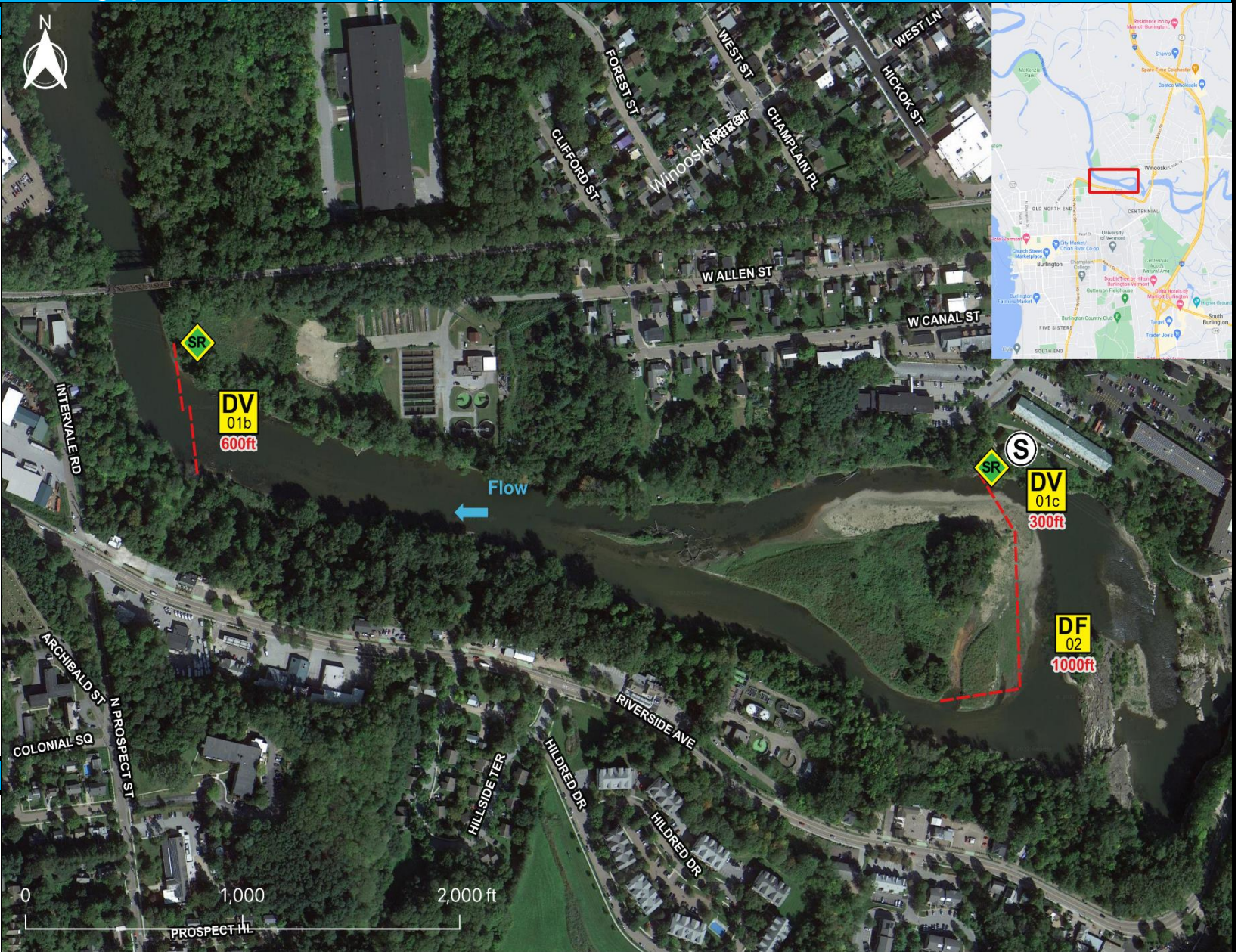
- DF** Deflection Booming
- DV** Diversion Booming
- EX** Exclusion Booming
- FO** Free Oil Recovery
- PR** Passive Recovery
- SR** Shoreside Recovery
- S** Staging Area
-  Boat Ramp
-  Kayak Ramp
-  Railroad
-  Protected-Water Boom
-  Protected-Water Boom (Ebb Tide)
-  Snare/ Sorbent Boom

Equipment - All Tactics

Boom(ft)	1900
Marine anchors	9
Shore anchors	5
Sorbent Boom(ft)	0
FO Recovery Sys	0
Shore Responders	4
Boat Responders	2
Boats	2

Version

9/20/2022







Tactics Deployment, Responder Safety, and GRS Data Information

Always consider on-scene conditions before deploying GRS tactics. Responder safety should always be the first priority.

Location

Latitude: 44° 32' 16"
 Longitude: 73° 16' 28"
 State: Vermont

Tactic #	Purpose	Response Equipment	Deployment Resources	Deployment Notes
DV-01b 	Redirect spilled oil from one location or direction of travel to a specific site for recovery.	600 ft protected water boom 3 marine anchor system 2 shoreline anchor system	2 shore responders 1 response boats 1 boat operators	Deploy boom as depicted to divert incoming oil to the collection site. Anchor every 200-300'. Adjust configuration as necessary to reduce entrainment. Set up shoreside recovery. Deploy shoreside anchor first.
		Testing Date	N Tested	
SR-01b 	Remove spilled oil that has been diverted to a designated recovery site accessible from shore.	2 skimming system 2 storage tank or bladder 2 hoses, pumps, fittings	2 shore responders	Set up shoreside recovery tactic at general location depicted on map.
		N/A	Testing Date	
DV-01c 	Redirect spilled oil from one location or direction of travel to a specific site for recovery.	300 ft protected water boom 1 marine anchor system 1 shoreline anchor system	2 shore responders 1 response boats 1 boat operators	Deploy boom as depicted to divert incoming oil to the collection site. Anchor every 200-300'. Adjust configuration as necessary to reduce entrainment. Set up shoreside recovery. Deploy shoreside anchor first.
		Testing Date	N Tested	
DF-02 	Direct spilled oil away from a location to be protected or to change the course of the slick.	1000 ft protected water boom 5 marine anchor system 2 shoreline anchor system	4 shore responders 2 response boats 2 boat operators	Deploy boom as depicted to deflect incoming oil away from sensitive areas. Adjust configuration as necessary to reduce entrainment. Anchor every 200-300'. Deploy shoreside anchor first.
		Testing Date	N Tested	

