

Tactics Legend

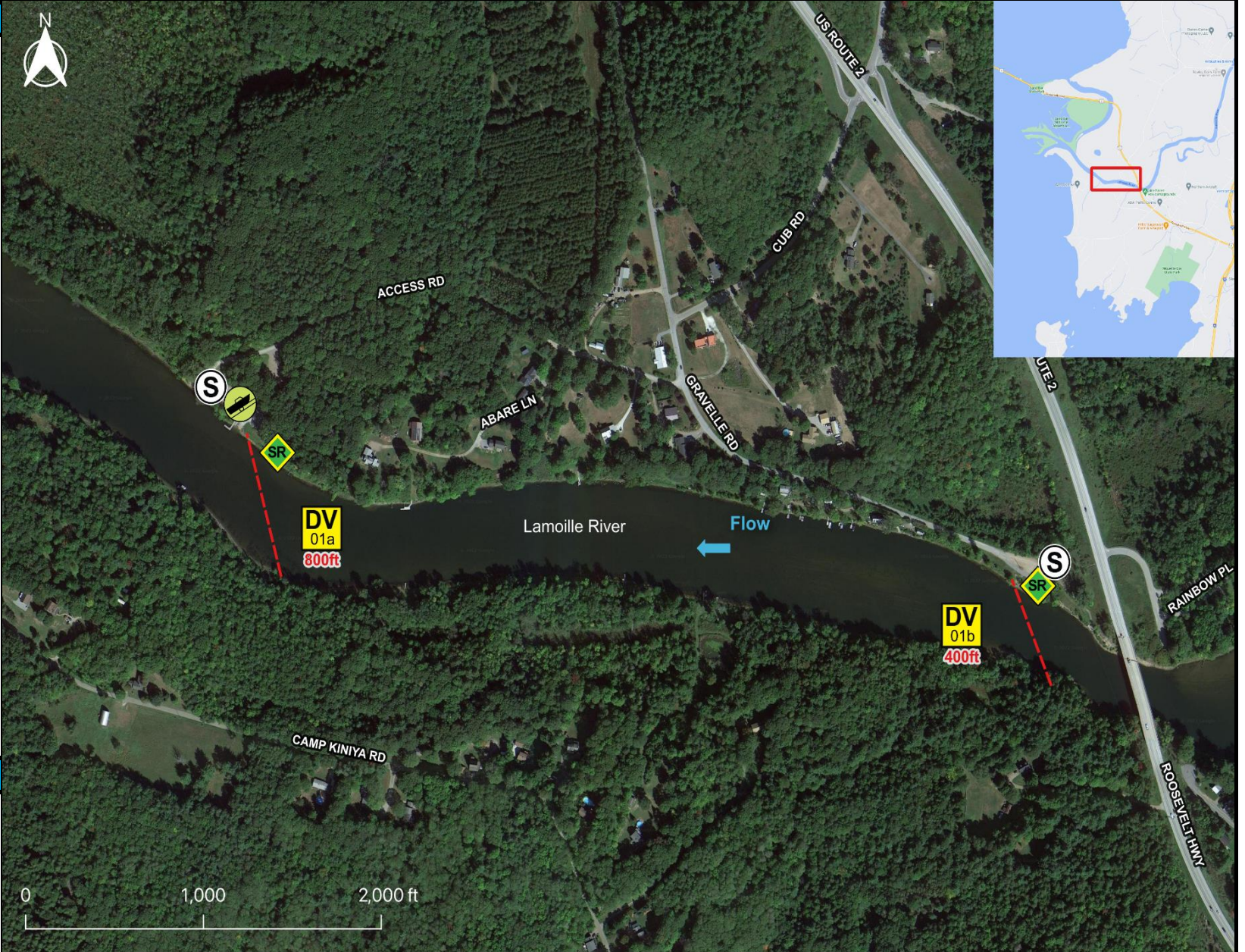
- DF** Deflection Booming
- DV** Diversion Booming
- EX** Exclusion Booming
- FO** Free Oil Recovery
- PR** Passive Recovery
- SR** Shoreside Recovery
- S** Staging Area
-  Boat Ramp
-  Kayak Ramp
-  Railroad
-  Protected-Water Boom
-  Protected-Water Boom (Ebb Tide)
-  Snare/ Sorbent Boom

Equipment - All Tactics

Boom(ft)	1200
Marine anchors	6
Shore anchors	4
Sorbent Boom(ft)	0
FO Recovery Sys	0
Shore Responders	2
Boat Responders	2
Boats	2

Version

9/20/2022






Tactics Deployment, Responder Safety, and GRS Data Information

Always consider on-scene conditions before deploying GRS tactics. Responder safety should always be the first priority.

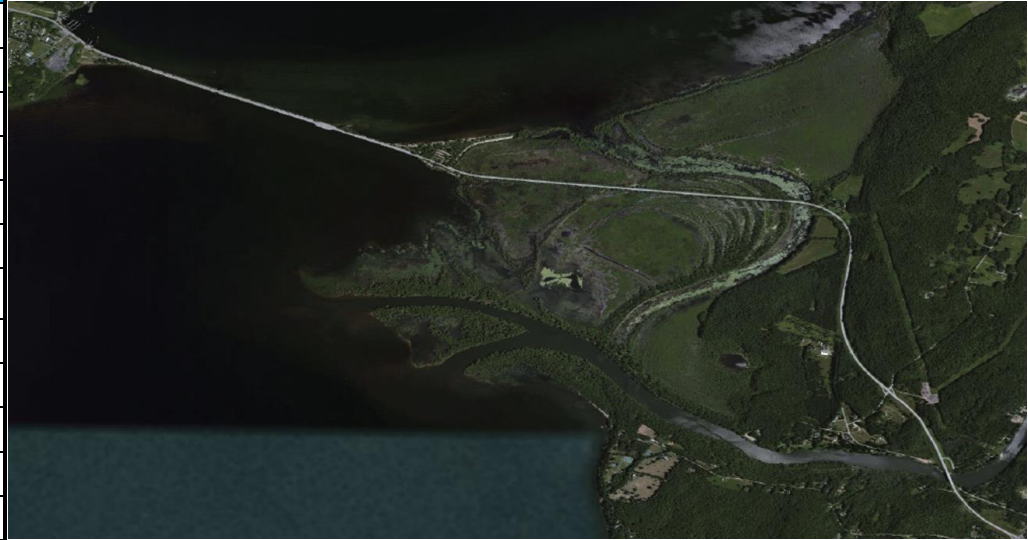
Location

Latitude: 44° 36' 18"
 Longitude: 73° 12' 42"
 State: Vermont

Tactic #	Purpose	Response Equipment	Deployment Resources	Deployment Notes
DV-01a 	Redirect spilled oil from one location or direction of travel to a specific site for recovery.	800 ft protected water boom 4 marine anchor system 2 shoreline anchor system	2 shore responders 1 response boats 1 boat operators	Deploy boom as depicted to divert incoming oil to the collection site. Anchor every 200-300'. Adjust configuration as necessary to reduce entrainment. Set up shoreside recovery. Deploy shoreside anchor first.
		Testing Date	N Tested	
SR-01a 	Remove spilled oil that has been diverted to a designated recovery site accessible from shore.	2 skimming system 2 storage tank or bladder 2 hoses, pumps, fittings	2 shore responders	Set up shoreside recovery tactic at general location depicted on map.
		N/A	Testing Date	
DV-01b 	Redirect spilled oil from one location or direction of travel to a specific site for recovery.	400 ft protected water boom 2 marine anchor system 2 shoreline anchor system	2 shore responders 1 response boats 1 boat operators	Deploy boom as depicted to divert incoming oil to the collection site. Anchor every 200-300'. Adjust configuration as necessary to reduce entrainment. Set up shoreside recovery. Deploy shoreside anchor first.
		Testing Date	N Tested	

Local contacts

All VT Fire Departments	Call 911
EPA Region 1 Tribal Program	617-918-1123
Missisquoi National Wildlife Refuge	802-868-4781
National Response Center	800-424-8802
VT Comm. on Native American Affairs	802-779-7015
VT DEC (24-Hour)	800-641-5005
VT Drinking Water & Groundwater	802-741-5311
VT Emergency Mgmt & Homeland Security	800-347-0488
VT Fish & Wildlife Dept (Essex)	802-878-1564
VT Hazmat Response Team	800-641-5005
VT Div of Historical Preservation	802-272-2509



Lamoille River Delta and Sandbar State Park Area looking north. Sites DV-01a and DV-01b at lower right.



Site of DV-01a at Lamoille Fishing Access Area (left) and DV-01b at Sears Fishing Access Area (right).

Resources Protected

Fish	Fish Species of Special Concern, Lake Sturgeon
Birds	No available data
Threat/End. Species	Rare, Species of Special Concern, Spiny Softshell Turtle
Cultural/Historical Resources	Historical/Archaeological Sites, Native American Tribal Lands
Human Use	Boat Ramp, Public Drinking Water Supply, Public Beach, State Park, Water Intake
Land Management	No available data
Riverine	No available data

Navigational Hazards

Lake and river conditions such as flow rate and flood stage vary depending on the time of year and heavy rain or snowfall.

If ice is present GRS tactics and strategies must be reevaluated.

Vessel operators should have local knowledge and experience operating in riverine environments.

Special Considerations

Survey site prior to deployment and modify deployment tactics and techniques as appropriate based on observed river/lake conditions.