



Vermont Architectural Paint Stewardship Program Plan



Submitted by:

John Hurd

PaintCare Inc.

901 New York Ave NW Suite 300

Washington, DC 20001

www.paintcare.org

Submitted to:

Julie Moore

Secretary

Vermont Agency of Natural Resources

1 National Life Drive, Davis 2

Montpelier, VT 05620

Updated October 15, 2020

Contents

Section 1. Introduction	4
A. Introduction	4
B. Paint Stewardship in the United States	4
C. PaintCare Inc.	4
D. Vermont Paint Stewardship Law and Program Plan	5
Section 2. Registered Manufacturers and Brands, and Program Products	7
A. Manufacturer Registration	7
B. Private Label Agreement	7
C. Posting and Purpose of Manufacturer and Brand Lists	8
D. Program Products	8
E. Non-Program Products	9
Section 3. Collection Infrastructure	10
A. Introduction	10
B. Audience	11
C. Waste Districts and Household Hazardous Waste Programs	11
D. Paint Retailers	14
E. Material Reuse Stores	14
F. Waste Transfer Stations and Recycling Centers	15
G. One-Day Paint Collection Events	15
H. Direct Pick-Up Service for large volumes	16
I. Convenience Criteria	16
Section 4. Site Operations and Materials Management	18
A. Site Operations	18
B. Site Training	18
C. Paint Collection Bins	19
D. Collection Volumes	19
E. Non-Program Products	20
F. Site Visits and Monitoring	20
G. Paint Transportation	20
H. Paint Processing	21
Latex Paint Management	21
Oil-Based Paint Management	22
Non-Program Product Management	22
I. Empty Paint Containers	22

Section 5. Education and Outreach	23
A. Introduction	23
B. Messages	23
C. Target Audiences	24
D. Outreach Methods	24
Outreach in the First Year	24
Continuing Outreach Strategies	25
Outreach Firm	27
In-House Design	27
Section 6. Paint Sales and Projected Collection Volumes	28
A. Paint Sales	28
B. Projected Collection Volume and Recovery Rate	29
Section 7. Budget and PaintCare Fee	31
A. Introduction	31
B. Funding Mechanism	32
C. Budget Categories	32
E. Budget and Fee Structure	33
Program Deficit	34
D. Fee structure	34
F. Audit of the PaintCare Fee	34
Section 8. Annual Report and Financial Audit	35
A. Annual Report	35
B. Financial Audit	36
Appendix	
A. PaintCare Board of Directors	
B. Registered Manufacturers and Brands	
C. Definition of Program Products and Sample Product Notices	
D. Outreach Materials	
E. Independent Financial Audit Letter	

Section 1. Introduction

A. INTRODUCTION

In June 2013, Governor Shumlin signed Act 58, creating the Vermont Paint Stewardship Program. Act 58 is codified in Sub-Chapter 4, Chapter 159 of Vermont Statute Title 10: Conservation and Development.

Vermont's paint stewardship law requires manufacturers of architectural paint to establish a program to reduce the generation of postconsumer paint, promote the using up of leftover paint, and to facilitate the recycling and proper disposal of unwanted postconsumer paint. The program should increase opportunities for consumers to properly manage leftover paint, reduce costs to local governments managing postconsumer paint, work to keep paint out of the waste stream, and conserve natural resources.

B. PAINT STEWARDSHIP IN THE UNITED STATES

Several municipal household hazardous waste programs and waste management districts in Vermont took part in an effort that began in 2003 to bring about an industry-managed paint stewardship system. This effort, the Paint Product Stewardship Initiative (PPSI), led by the Product Stewardship Institute, included a multi-year stakeholder dialogue and several research projects related to paint recycling. Stakeholders included the American Coatings Association (representing paint manufacturers), paint recyclers, federal EPA, and many state and local governments across the country.

The PPSI resulted in the development of a model paint stewardship law to create an economically and environmentally-sustainable, industry designed and implemented postconsumer paint management system. In 2009, Oregon became the first state to pass the model paint stewardship law. Similar laws have since passed in California, Colorado, Connecticut, District of Columbia, Maine, Minnesota, Rhode Island, and Vermont.

C. PAINTCARE INC.

PaintCare – a 501(c)(3) non-profit organization – was formed in 2009 by the American Coatings Association, the primary trade association for the paint and coatings industry. PaintCare serves as the stewardship organization for architectural paint manufacturers in Vermont. PaintCare representation is open to all architectural paint manufacturers, and they may register with PaintCare at any time. PaintCare currently represents approximately 200 paint manufacturers across its nine programs.

PaintCare's Board of Directors consists of eleven non-paid representatives of architectural paint manufacturing companies. The names and companies of PaintCare's current Board of Directors is provided in the appendix. PaintCare's corporate office is in Washington, DC. State program staff are in or work in the states in which paint stewardship programs operate, including Vermont.

Pursuant to an ongoing corporate restructuring, PaintCare plans to form a separate, wholly-owned limited liability company (PaintCare Vermont LLC) dedicated solely to operations in Vermont. That subsidiary company will share the 501(c)(3) non-profit status of its parent, PaintCare Inc. This change will bolster the financial and legal independence of the Vermont PaintCare program relative to the other PaintCare programs that operate in the other jurisdictions. Once PaintCare Vermont LLC is formed, PaintCare will ask for the state to approve a switch in the stewardship organization from PaintCare Inc. to PaintCare Vermont LLC.

D. VERMONT PAINT STEWARDSHIP LAW AND PROGRAM PLAN

The Vermont paint stewardship law requires manufacturers of architectural coatings to submit to and receive approval of a paint stewardship program plan – individually or through a representative organization – from the Vermont Agency of Natural Resources (ANR).

PaintCare's original program plan was approved by ANR in March 2014, for a three-year period. The Vermont Paint Stewardship Program began May 1, 2014 – two months before the statutory start date. Following 18 months of operations, PaintCare determined that program revenue was not sufficient to cover program costs and submitted a revised program plan with a revised budget and assessment structure (PaintCare fees). The revised plan was approved in March of 2016. This current submission is an updated plan that includes the revised PaintCare fees approved in 2016, and looks ahead to the next five years of the program.

Per statute, this program plan must:

1. List participating manufacturers and brands covered by the program.
2. Provide information on the architectural paint products covered under the program.
3. Describe how the program will collect, transport, recycle, and process postconsumer paint for end-of-life management, including recycling, energy recovery, and disposal, using environmentally sound management practices.
4. Describe how the program will provide for convenient and available statewide collection of postconsumer architectural paint in urban and rural areas of the state, including partnering with existing household hazardous waste collection programs and with paint retailers.
5. Provide geographic information system modeling to determine the number and distribution of sites for collection of postconsumer architectural paint based on the following criteria: (a) at least 90 percent of Vermont residents shall have a permanent collection site within a 15-

mile radius, and (b) one additional permanent site will be established for every 10,000 residents of a municipality and additional sites shall be distributed to provide convenient and reasonably equitable access for residents within each municipality, unless otherwise approved by ANR.

6. Establish goals to reduce the generation of postconsumer paint, to promote the reuse of postconsumer paint, and for the proper management of postconsumer paint as practical based on current household hazardous waste program information. The goals may be revised by the producer or stewardship organization based on the information collected for the annual report.
7. Describe how postconsumer paint will be managed in the most environmentally and economically sound manner, including following the waste-management hierarchy. The management of paint under the program shall use management activities that promote source reduction, reuse, recycling, energy recovery, and disposal.
8. Describe education and outreach efforts to inform consumers of collection opportunities for postconsumer paint and to promote the source reduction and recycling of architectural paint for each of the following: consumers, contractors, and retailers.
9. Include a budget and proposed funding mechanism under which each manufacturer remits to a stewardship organization payment of a paint stewardship assessment for each container of architectural paint it sells in Vermont. The proposed budget and assessment structure must be reviewed by a third-party auditor agreed upon by ANR, and the third-party auditor must provide a recommendation as to whether the proposed budget and assessment is cost-effective, reasonable, and limited to covering the cost of the program.

Within 90 days of submission of a program plan, ANR determines whether to approve the plan, including its budget and assessment structure. ANR shall approve the plan if it provides for the establishment of a paint stewardship program that meets the requirements noted above, and if it determines that the plan does the following:

1. Achieves convenient collection for consumers.
2. Educates the public on proper paint management.
3. Manages waste paint in a manner that is environmentally safe and promotes reuse and recycling.
4. Is cost-effective and demonstrates that the costs of the program and any proposed assessment are reasonable and the assessment does not exceed the costs of implementing an approved plan.

Section 2. Registered Manufacturers and Brands, and Program Products

Statutory Citation

10 V.S.A. § 6673. PAINT STEWARDSHIP PROGRAM

(a) The plan shall address the following:

(1) Provide a list of participating producers and brands covered by the program.

(2) Provide specific information on the architectural paint products covered under the program, such as interior or exterior water- and oil-based coatings, primers, sealers, or wood coatings.

Section Overview

This section discusses:

- ◆ Process for identifying and contacting architectural paint manufacturers
- ◆ Private label agreements
- ◆ Purpose and posting of registered manufacturer and brand lists
- ◆ Defining and identifying program products

A. MANUFACTURER REGISTRATION

Representation by PaintCare is open to all architectural paint manufacturers who are obligated to take part in the Vermont Paint Stewardship Program. To identify potential participants, PaintCare obtained manufacturer information through a variety of sources, including:

- ◆ PaintCare programs in other states
- ◆ The American Coatings Association and other paint trade associations
- ◆ Internet research

Prior to the start of the program, PaintCare notified manufacturers of the Vermont law by email and through a notice on the website that companies use to report sales for other states. Current lists of registered manufacturers and registered brands are provided in the appendix.

B. PRIVATE LABEL AGREEMENT

Private label agreements (or services) represent products manufactured or distributed by one company for use under another company's label. They are also referred to as store brands, generic

brands, and tolling agreements. These agreements are often kept confidential to protect the arrangements from competitive interests. Therefore, PaintCare does not indicate the brands that are produced by each manufacturer, unless the name of the manufacturer is included in the brand name. Instead, registered manufacturers and their registered brands are presented in two separate lists, thereby assuring the confidentiality of private label and other brand agreements.

C. POSTING AND PURPOSE OF MANUFACTURER AND BRAND LISTS

PaintCare posts the lists of registered manufacturers and brands on the PaintCare website. The lists are updated monthly, and also sent to ANR. The purpose of posting the lists is to make them available for retailers and distributors to determine which brands may be sold in Vermont.

D. PROGRAM PRODUCTS

Architectural paints are referred to as program products or paint in this plan. For simple communication, this plan uses the common terms latex paint to mean non-combustible or water-based program products, and oil-based paint to mean combustible or petroleum solvent-based program products.

To determine which products are to be assessed the PaintCare fee and collected for proper management under the program, PaintCare uses definitions and terminology from the US EPA, state, and local architectural and industrial maintenance (AIM) rules. These definitions, along with a decision table, a list of program products, and examples of non-program products are included in the appendix.

To be a program product, five questions about a product must be answered as follows:

- | | |
|---|-----|
| ◆ Is it a coating? | Yes |
| ◆ Is it an architectural coating? | Yes |
| ◆ Is it for Industrial Maintenance? | No |
| ◆ Is it for Original Equipment Manufacturing? | No |
| ◆ Is it a Specialty Coating? | No |

The result of applying the definitions to coatings products is that program products include water-based and oil-based house paints, primers, stains, sealers, elastomeric roof and deck coatings, varnishes, shellacs, lacquers, and single component polyurethanes. These are the products to which the PaintCare fee is applied by manufacturers (and passed down to consumers), and the products that are accepted at drop-off sites for recycling and proper end-of-life management are the same.

If an architectural coating product category is identified that is not covered by the AIM rules, PaintCare determines, using the above methodology, whether the product should be a covered product for the purposes of the program. In addition, PaintCare reaches out to all manufacturers of the product to affirm its determination.

As needed, PaintCare reviews products and publishes notices to clarify whether certain products should be covered by the program. These reviews of an individual product or product categories are conducted by gathering information from manufacturers about the chemistry and use of the products, and by consulting with technical staff and legal counsel who are familiar with the chemistry, use, and regulations of program products. Two examples of such notices are included in the appendix.

If a new product category is to be added to the program, PaintCare will submit an amended program plan to ANR for approval before adding the product category to the program.

E. NON-PROGRAM PRODUCTS

Non-program products, whether they are coatings (e.g., automotive paints are excluded because they are not for architectural use) or non-coatings (e.g., paint thinners), are not assessed the PaintCare fee and are not accepted by drop-off sites in the program, because they introduce unfunded costs and safety hazards.

Section 3. Collection Infrastructure

Statutory Citation

10 V.S.A. § 6673. PAINT STEWARDSHIP PROGRAM

(a) The plan shall address the following:

(4) Describe the program and how it will provide for convenient and available statewide collection of postconsumer architectural paint in urban and rural areas of the State. The producer or stewardship organization shall use the existing household hazardous waste collection infrastructure when selecting collection points for postconsumer architectural paint. A paint retailer shall be authorized as a paint collection point of postconsumer architectural paint for a paint stewardship program if the paint retailer volunteers to act as a paint collection point and complies with all applicable laws and regulations.

(5) Provide geographic information modeling to determine the number and distribution of sites for collection of postconsumer architectural paint based on the following criteria: (A) at least 90 percent of Vermont residents shall have a permanent collection site within a 15-mile radius; and (B) one additional permanent site will be established for every 10,000 residents of a municipality and additional sites shall be distributed to provide convenient and reasonably equitable access for residents within each municipality, unless otherwise approved by the Secretary.

(6) Establish goals to reduce the generation of postconsumer paint, to promote the reuse of postconsumer paint, and for the proper management of postconsumer paint as practical based on current household hazardous waste program information.

Section Overview

This section discusses:

- ◆ Pre- and post-program paint collection infrastructure
- ◆ Drop-off site recruitment
- ◆ Application and results of the Vermont convenience criteria

A. INTRODUCTION

Vermont is unique when compared to the other PaintCare programs; it has statewide and well established household hazardous waste (HHW) collection programs, and a very small population. The Vermont Materials Management Plan requires each waste management district, alliance or independent town to provide its residents with at least two HHW collection events per year, increasing to four events as of 2018, or access to a permanent HHW facility within 15 miles.

Vermont has 21 HHW programs, and includes five permanent HHW facilities (four of which are open year-round), and more than 75 HHW collection events per year. PaintCare currently partners with all of Vermont's HHW programs.

In addition to its partnership with HHW programs, PaintCare has increased recycling opportunities for Vermont residents through the addition of new paint drop-off sites and services. As of August 2017, the program also includes 62 retail drop-off sites (paint, hardware, and home improvement stores), six transfer stations, and one recycling center. In addition, the program has held five paint-only drop-off events in underserved areas of the state and conducted 15 direct pick-ups of large volumes of paint (more than 200 gallons) from painting contractors, a university, local housing authorities, and a solid waste hauler.

PaintCare drop-off sites can be found using the site locator tool on PaintCare's website.

B. AUDIENCE

The PaintCare program serves Vermont residents, businesses, and others that have unwanted, postconsumer paint, subject to programmatic limitations described here:

Residential Generators/Households. The program accepts any quantity of latex or oil-based paint from residential generators/households.

Conditionally Exempt Small Quantity Generators (CESQGs). Trade painters, contractors, small businesses, and other small to medium-sized organizations are typical CESQGs (called CEGs in Vermont). The program accepts any quantity of latex paint from CESQGs, and accepts oil-based to the limits applied to hazardous waste generation for CESQGs (220 pounds or approximately 25 gallons per month).

Small Quantity Generators (SQGs) and Large Quantity Generators (LQGs). The program accepts any quantity of latex paint from SQGs and LQGs. The program does not accept oil-based paint from SQGs or LQGs.

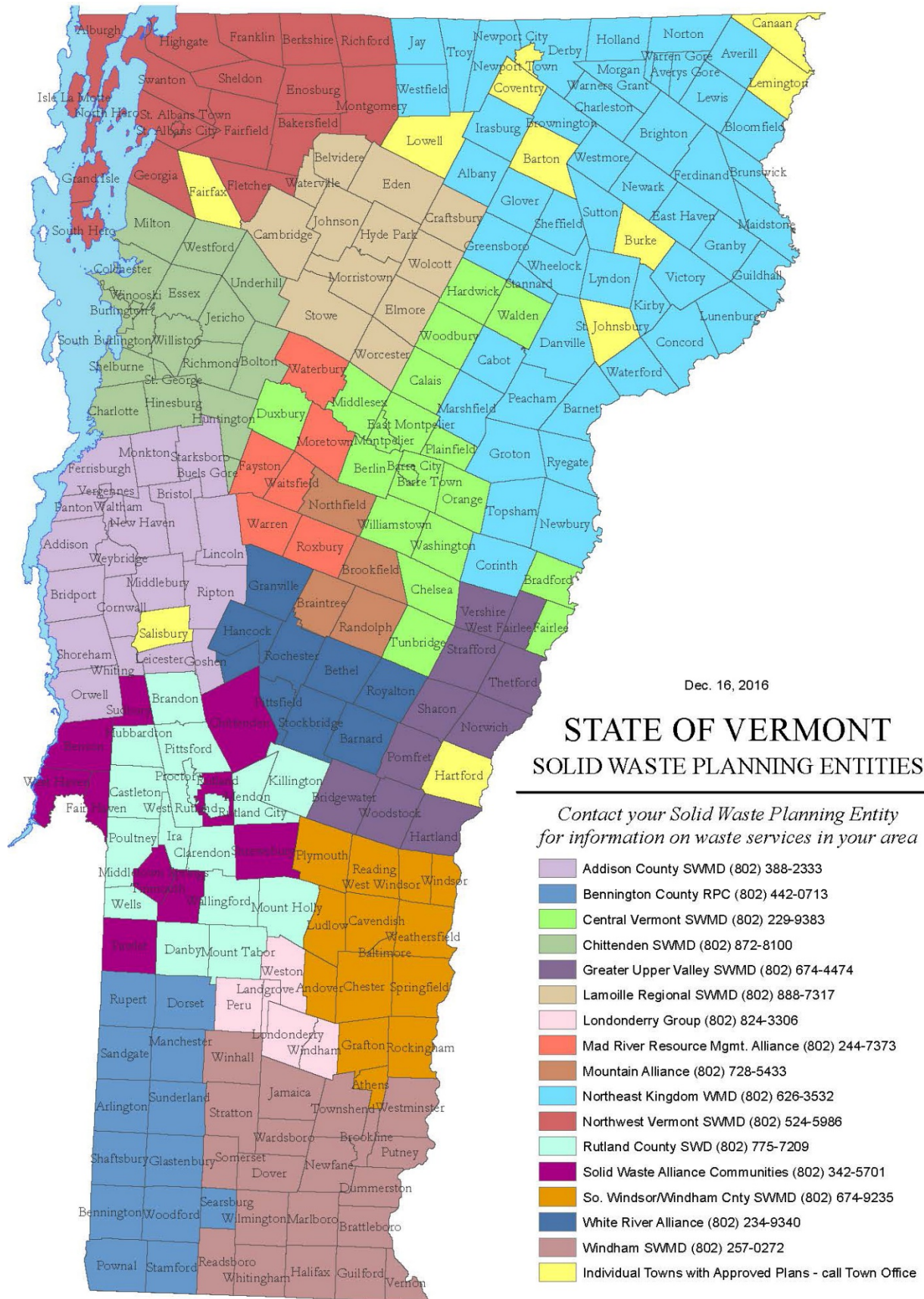
C. WASTE DISTRICTS AND HOUSEHOLD HAZARDOUS WASTE PROGRAMS

With assistance from staff at ANR, Chittenden County, and other municipal programs, PaintCare made presentations about the program at several stakeholder meetings and met with representatives from all the state's waste districts and most of the independent towns prior to the start of the program to explain the benefits of the PaintCare program. The benefits of partnering with PaintCare for waste districts that have HHW or other paint collection programs include cost savings, expanded customer service through the addition of latex paint to their program (for those that did not accept latex paint prior to the PaintCare program), reducing waste, and increasing recycling. A fact sheet for HHW programs, along with an interest form was developed by PaintCare and

distributed at the group and individual meetings. A current copy of the fact sheet is included in the appendix and available on PaintCare's website.

PaintCare currently partners with all of Vermont's 21 HHW programs. PaintCare continues to meet with HHW and other municipal staff to share information about the program and solicit input to improve and enhance the program.

The map on the following page, provided by ANR, shows the state's current waste districts and independent towns that offer (or are required to offer) some form of HHW services to their residents.



D. PAINT RETAILERS

PaintCare has identified approximately 170 paint retailers in Vermont, including paint, hardware, and home improvement stores.

Prior to the start of the program, PaintCare sent several mailings about the program to known retailers in the state either directly or through their corporate headquarters to inform them about the program. Most retailers were also asked to participate in the program as paint drop-off location. (The corporate headquarters for big box retailers had previously informed PaintCare that their stores would not become drop-off locations). Current copies of the fact sheets and drop-off site interest form provided to retailers are included in the appendix and available on PaintCare's website.

All interested paint retailers have the opportunity to participate as a PaintCare drop-off site provided they meet PaintCare's requirements and applicable laws and regulations, including, but not limited to:

- ◆ Ability to provide enough space to hold a minimum number of paint collection bins as determined by PaintCare's needs in their specific geographic location
- ◆ Willingness to accept both latex and oil-based paints
- ◆ Willingness to accept paint from any qualifying generator
- ◆ Reasonable access by the public and by PaintCare's transporter
- ◆ Compliance with PaintCare operational guidelines and applicable state and local regulating agency requirements
- ◆ Willingness to have their site promoted on PaintCare's website and through other outreach methods
- ◆ Willingness to post and distribute PaintCare point-of-sale outreach materials including a window poster advertising their store as a drop-off site

Retail participation is entirely voluntary and drop-off sites are not compensated. Currently, 62 paint retail stores participate as drop-off sites. PaintCare's Vermont program manager visits every drop off site at least twice a year to check on operations, answer questions, and provide updated outreach materials.

E. MATERIAL REUSE STORES

Reuse stores – retail outlets that accept and redistribute excess or reusable building materials – are a unique group of retailers because they can offer paint for reuse. PaintCare provides compensation to reuse stores for tracking and reporting the amount of paint that is sold or given away for reuse from their store (see the Reuse Programs fact sheet in the appendix for more information).

PaintCare has identified six reuse stores in Vermont: four ReSOURCE stores, one Habitat for Humanity ReStore, and one ReCOVER store. All six stores have been invited to participate in the program as paint drop-off and reuse sites.

Currently, all four ReSOURCE stores and the Habitat for Humanity ReStore sell Local Color recycled paint made by the Chittenden Solid Waste District and have indicated that they are happy doing so and do not want to collect used paint to redistribute. The ReCOVER store has previously declined to participate, but new management is still reevaluating participating in the program. The program manager visits with store staff periodically to make sure that they are aware of the program and the option to participate.

F. WASTE TRANSFER STATIONS AND RECYCLING CENTERS

Waste transfer stations and recycling centers also play a role in the paint collection infrastructure in Vermont. They are in many communities and provide a convenient opportunity and familiar location for their customers to drop off unwanted paint. Transfer stations have some unique characteristics and requirements. They are convenient for people who use them to dispose of other waste and recyclables, so adding paint makes sense. And transfer stations are often used by town departments (e.g., public works) for waste generated by the municipality itself. Such departments may choose to drop off paint at transfer stations to save on the municipality's own paint management costs.

Similar to HHW programs, transfer stations may have some operational or funding restrictions, and exceptions are made by PaintCare to accommodate them. Use of transfer stations is usually limited by the operator to local residents and businesses. Although PaintCare allows anyone to drop off paint at any PaintCare site, transfer stations can limit participation to their customers or community if they wish to do so.

Prior to the start of the program, PaintCare developed and mailed a fact sheet and interest form to all transfer stations and recycling centers (current copies of these materials are included in the appendix). Most transfer stations and recycling centers in Vermont are operated by municipalities and some are privately run – both groups are invited to join the program. Six transfer stations and one recycling center currently participate in the program. PaintCare also offers compensation to transfer stations and recycling centers that give away paint for reuse. Currently one is offering this service.

PaintCare's Vermont program manager continues to attend meetings of solid waste managers in the state to maintain awareness and answer questions about the program.

G. ONE-DAY PAINT COLLECTION EVENTS

Feedback from ANR and municipal programs prior to the start of the program suggested that despite the state's comprehensive HHW collection infrastructure, households and businesses in Vermont

were likely to have been storing up old paint, and they were particularly likely to have accumulated latex paint, as not all HHW programs in Vermont accepted latex paint prior to the start of the PaintCare program. Also, some offered services to businesses, but not all. Those that did not accept latex paint advised the public to dry and dispose of it in the trash. Despite this advice, many people continued to store their unwanted, leftover latex paint, because the process to dry and dispose is messy and inconvenient.

PaintCare was concerned about the possibility of overwhelming retail drop-off sites with large volumes of paint being dropped off at the start of the program. To address this, PaintCare held five one-day paint-only drop-off events in Bennington, Manchester, Montpelier, Morrisville, and Rutland during the first year of the program. Unlike municipally-sponsored HHW events, participation in these events was not restricted by town or other boundaries. The events drew participation by 965 residents and businesses.

The current program offers a year-round drop-off site within 15 miles to 99.5% of the state's population. As a result, the program does not anticipate holding additional paint-only events in the near future, but they remain an option for added convenience and or to raise program awareness.

H. DIRECT PICK-UP SERVICE FOR LARGE VOLUMES

The direct pick-up service is offered to households, painting contractors, and other entities that have accumulated or regularly accumulate large volumes of paint – generally more than 200 gallons. (PaintCare recently lowered the minimum volume requirement from 300 gallons to 200 gallons). This service is known as the Large Volume Pick-Up Service or LVP Service. Program participants can receive a direct pick-up at their site on an ad hoc or on-going basis. Approval for use of the service is determined by PaintCare. Potential users of the service are asked to provide specific information about the volume of paint, type of paint (latex vs. oil-based), and container sizes. Once a site is approved for a pick-up, they are put in contact with PaintCare's transportation service provider to schedule an appointment to have their paint picked up.

The program has conducted 15 large volume pick-ups (from 12 locations) from painting contractors, a university, local housing authorities, and a solid waste hauler. A copy of the LVP Service fact sheet is included in the appendix.

I. CONVENIENCE CRITERIA

To ensure adequate paint collection infrastructure in Vermont, PaintCare used Geographic Information System (GIS) modeling to determine the appropriate minimum number and distribution of drop-off sites based on the following baseline criteria required by the Vermont paint stewardship law:

Distribution/Distance Criterion. At least 90% of Vermont residents shall have a permanent site within a 15-mile radius.

Retail drop-off sites are available to households and businesses from anywhere in the state; however, municipal drop-off sites (waste transfer stations and HHW programs) are only available to residents from certain towns or geographic areas. For municipal partners that limit participation, only eligible populations are counted towards the program's percentage-served calculation.

Population Density Criterion. In addition to drop-off sites selected to meet the 15-mile distance criteria, at least one site is required for every 10,000 residents of a municipality.

Application of these criteria prior to the start of the program resulted in the need for approximately 45 optimally located year-round sites. To measure progress towards the convenience goals, PaintCare annual reports provide the convenience level offered by the current drop-off sites. If PaintCare has not met or maintained the convenience goals, the report will include a discussion of the efforts that will be undertaken to meet them. PaintCare's 2016 annual report showed that as of June 30, 2016, the sites in place at that time provided 99.5% of Vermont's residents a drop-off site within 15 miles of their home.

Two areas of the state are identified as needing additional sites based on the density criterion of one year-round site for every 10,000 residents of a municipality – Milton which needs one site, and Burlington which has one site and needs three more. PaintCare has identified an interested site in Milton and will have this site established before the end of 2017. The towns immediately surrounding Burlington have nine retail collection sites open seven days a week and the CSWD Environmental Depot is open four days a week. There is also an annual household hazardous waste collection held in Burlington. There are a limited number of retailers in the city of Burlington, only one of which is interested in being a collection site due to space or other limitations. Residents of Burlington are accustomed to shopping in the surrounding towns where many of the areas' larger retail stores are located. Through this program plan, PaintCare is asking for approval from the Secretary of the Agency of Natural Resources for a waiver to the population requirement for Burlington as we feel that the residents are well served by sites in surrounding towns.

Section 4. Site Operations and Materials Management

Statutory Citation

10 V.S.A. § 6673. PAINT STEWARDSHIP PROGRAM

(a) The plan shall address the following:

(3) Describe how the program proposed under the plan will collect, transport, recycle, and process postconsumer paint for end-of-life management, including recycling, energy recovery, and disposal, using environmentally sound management practices.

(7) Describe how postconsumer paint will be managed in the most environmentally and economically sound manner, including following the waste-management hierarchy. The management of paint under the program shall use management activities that promote source reduction, reuse, recycling, energy recovery, and disposal.

Section Overview

This section discusses:

- ◆ Drop-off site operations
- ◆ Paint transportation and processing procedures

A. SITE OPERATIONS

All PaintCare drop-off sites must:

- ◆ Have an agreement in place with PaintCare
- ◆ Accept program products from all site-eligible audiences
- ◆ Be staffed during operating hours
- ◆ Store paint in a secure location
- ◆ Operate in accordance with PaintCare's site guidelines, and with applicable federal, state and local environmental laws, regulations, and permits. (If any discrepancies occur between PaintCare's guidelines and these, the requirements of latter group should be followed.)

B. SITE TRAINING

Except for HHW programs for which it is optional, all other PaintCare drop-off sites receive an in-person, on-site training on program operations and are provided a training manual that is reviewed

with PaintCare staff in person, and includes a training log to be signed by any staff handling postconsumer paint for the program.

Topics covered in the training (and training manual) include:

- ◆ Program product identification
- ◆ Safe handling and storage of program products
- ◆ Spill clean-up and reporting
- ◆ Procedure for scheduling a paint pick-up
- ◆ CESQG screening
- ◆ Record keeping



C. PAINT COLLECTION BINS

Drop-off sites are equipped with paint collection bins to store postconsumer paint received through the program. PaintCare sites use collection bins and other containers that have been approved by the US Department of Transportation (DOT). These include cubic yard reusable bins (below left) or single-use cardboard boxes (below right), 55-gallon drums, or other appropriate containers. Drop-off sites are required to keep collection bins in a secure location that is not accessible to the public.



D. COLLECTION VOLUMES

PaintCare advertises that each site will accept up to five gallons per participant, per drop-off site, per day. Drop-off sites may take larger volumes if they choose; drop-off sites set their own limits on the amount of paint they will accept, as long as the limit is not lower than five gallons per customer per day.

E. NON-PROGRAM PRODUCTS

Minimization of non-program products entering the program is critical and achieved through public education, signage at drop-off sites, and site training on product identification. Non-program products that are discovered while bins are processed downstream are managed by the program (they are not returned to the site). The program's transportation and processing service providers provide information to PaintCare regarding the source (specific drop-off site), quantity, and type of non-program products received. Depending on the amount of contamination, PaintCare does one or more of the following: (1) contacts the site to let them know about the incident, (2) provides additional/refresher site training on identification of program and non-program products, or (3) removes the site from the program (no sites have been removed from the Vermont program to date).

F. SITE VISITS AND MONITORING

Following the initial training, sites are visited routinely to ensure compliance with program requirements, address questions and concerns, and provide outreach materials and signage. Most sites are visited two times per year.

G. PAINT TRANSPORTATION

An effective transportation system is required to ensure the paint collection infrastructure operates efficiently. PaintCare contracts for transportation of all program products employing both private and public entities (e.g., some municipalities transport paint from their own HHW events to their HHW facility) and generally selects service providers through a competitive bid process.

Transporters must meet all applicable state and federal DOT rules and regulations and track paint from drop-off sites to the final destination. Transporter (and processor) facilities and records are subject to audit by PaintCare.

As needed, transporters drop off empty collection bins and program supplies (e.g., spill kits) at drop-off sites and events and pick up full collection bins in a timely manner. Transporters service drop-off sites on either an on-call basis (sites call for pick-up when their storage capacity is at least 50% full), or on a set schedule (e.g., every Monday) – whichever method is best for each individual drop-off site.

The program's transporter(s) are listed in the annual reports and ANR is notified if any changes occur between reports.

H. PAINT PROCESSING

Either directly or through transporters, PaintCare contracts for processing and proper end-of-life management of all program products. Processing facilities are included in the annual reports and ANR is notified if any changes occur to processors or end-of-life destinations between reports.

Latex Paint Management

The condition in which postconsumer latex paint is received by the program may limit the management options. If containers are not properly sealed during storage, latex paint can harden due to evaporation and may no longer be useable or recyclable. If latex paint is frozen several times, it may not be as suitable for use or recycling.

Reuse. The program supports latex paint reuse and provides monetary compensation to incentivize it. Paint reuse programs return good quality paint to the local community without moving it through a costly transportation and processing system. As with other second-hand products, users of “previously owned” latex paint are notified that the suitability of the product cannot be guaranteed, and they are required to sign a waiver before taking latex paint for reuse from a PaintCare site.

Recycled Paint. Most latex paint collected through the program is processed to make recycled-content paint. Once processed, recycled-content paint is sold through domestic and international markets. The quality of the paint varies from high quality color-segregated and filtered paint, to a lower grade paint most commonly used for graffiti abatement.

Local Color Paint. PaintCare works with the Chittenden Solid Waste District (CSWD) to support their Local Color paint processing program. CSWD recycles about 25% of the latex paint it receives into their Local Color recycled-content paints. Selected paint is blended, double filtered, and poured into two and five-gallon pails. Local Color can be purchased at the CSWD Environmental Depot, other municipal sites, and reuse stores around the state.



Alternative Daily Landfill Cover. Some of the latex paint collected through the program is used as a polymer substitute in a polymeric film product that is applied over the surface of landfills as a daily cover to resist water penetration into the landfill. This product is a sprayable alternative to geomembrane cover materials or soil that reduces the amount of leachate that needs to be treated.

Disposal. Some of the latex paint collected through the program is solidified for proper disposal. In this process, liquid paint is combined with drying agents and turned into a solid suitable for landfill.

Oil-Based Paint Management

As with latex paint, the condition of oil-based paint received by the program may limit its management options. Although it is possible to recycle oil-based paint back into paint, no processors in the United States offer this option at this time. The following waste management hierarchy is used for oil-based paint.

Reuse. As with latex paint, the program supports oil-based paint reuse and provides monetary compensation. Users of “previously owned” oil-based paint are notified that the suitability of the product cannot be guaranteed, and they are required to sign a waiver form before taking oil-based paint for reuse from a PaintCare site.

Fuel. Oil-based paint that is not reused is used as fuel by either cement kilns or incinerators. Oil-based paint is consolidated and blended with other compatible wastes to a prescribed standard. The resulting blend is then used as a fuel. The kilns and incinerators processing the oil-based paint are fully permitted for the necessary federal, state, and local requirements for hazardous waste management and monitor air emissions and kiln ash for permit compliance. Managing oil-based paint in this manner offsets the amount of other sources required to fuel the kilns and incinerators.

Non-Program Product Management

Although drop-off sites are trained and instructed to screen out non-program products, a small amount enters the program and is screened out during the sorting process by PaintCare’s transporters and downstream processors. Non-program product wastes are recycled or disposed of as hazardous waste by downstream processors.

I. EMPTY PAINT CONTAINERS

When feasible, empty metal and plastic paint containers are recycled. PaintCare works with its service providers to identify and utilize opportunities as markets permit.

Section 5. Education and Outreach

Statutory Citation

10 V.S.A. § 6673. PAINT STEWARDSHIP PROGRAM

(a) *The plan shall address the following:*

(8) *Describe education and outreach efforts to inform consumers of collection opportunities for postconsumer paint and to promote the source reduction and recycling of architectural paint for each of the following: consumers, contractors, and retailers.*

Section Overview

This section discusses:

- ◆ Messages
- ◆ Target audiences
- ◆ Outreach methods

A. INTRODUCTION

The program conducts education and outreach using a variety of communication tools, including:

- ◆ Print materials (e.g., brochures, fact sheets)
- ◆ Print advertising (e.g., newspaper)
- ◆ Online (e.g., website and social media)
- ◆ Direct, face-to-face communications (e.g., home shows, retail site visits, presentations)
- ◆ Public radio

B. MESSAGES

Reduce, Reuse, Recycle. The *Reduce, Reuse, Recycle* message commonly used by waste management programs has been reworded by PaintCare for paint stewardship as *Buy Right, Use It Up, Recycle the Rest*. Instead of instructing people to simply buy less, PaintCare's Buy Right message encourages people to take measurements of the space they are painting before going to buy paint, and asking their paint store expert for assistance in deciding how much paint to buy. The Use It Up message has two parts: Use up paint on your own or donate/give it to an organization or individual

that can use it. Finally, the Recycle the Rest message instructs people to take unwanted leftover paint to a PaintCare drop-off sites so it can be recycled.

Program Awareness. Another critical messaging component involves building general awareness of the PaintCare program. Key messages for this element include:

- ◆ What PaintCare is and why it exists
- ◆ Why the paint stewardship law was passed (e.g., product stewardship, cost savings to municipalities)
- ◆ The purpose and amount of the PaintCare fees on new paint
- ◆ Which products are accepted in the program and which products are not

C. TARGET AUDIENCES

- ◆ Consumers include anyone who purchases architectural paint, whether they are households, businesses, or anyone who has paint to recycle or dispose of. Consumers will be targeted with messages about buying the right amount of paint, reuse, and recycling paint a drop-off sites.
- ◆ Painting contractors are a subset of consumers most affected by the PaintCare program. PaintCare reached out to this group prior to the start of the program to inform them of the fees and new opportunities to recycle paint through the program. This group will continue to be targeted with all of PaintCare's messages, with a focus on using drop off sites for their leftover paint, and use of the large volume pick-up service.
- ◆ Retailers have specific responsibilities under the paint stewardship program. They need to check that the products they sell are registered with the program, pass on the fee to consumers, distribute public outreach materials, and they may also volunteer to become drop-off sites. PaintCare's outreach effort going forward will center on reminding retailers of their responsibilities, especially that they are required to distribute information about the program to consumers.

D. OUTREACH METHODS

Outreach in the First Year

In the first year of the program, PaintCare phased in outreach in a very deliberate "soft launch" with very little outreach in the first months of the program other than distribution of brochures, posters, and fact sheets through retailers. In the second month PaintCare began to use public radio

sponsorship messages. In the fourth month, general newspaper ads were introduced, and month by month, PaintCare added more advertising. After 12 months, this included digital video ads, magazine ads, direct mail to realtors, local newspapers statewide to list drop-off sites, signs on buses, and small local media releases to welcome new sites into the program. By all measures, the outreach has been effective, helping to increase awareness and use of the program.

Continuing Outreach Strategies

Printed Materials. Prior to the start of the program, PaintCare sent retailers a “starter pack” of consumer point-of-sale (POS) outreach materials. Revised materials were mailed to all paint retailers before the fee change in August 2016. In addition, POS materials are available and distributed to all retailers year-round.

PaintCare has developed these print materials to promote the program and will continue to distribute them for use by paint retailers, other types of drop-off sites, and others (e.g., government offices, real estate agents). Illustrations of these materials are shown here:



Brochure, Mini Card, Program Poster, Counter Mat, Painting Contractor Fact Sheet, LVP Service Fact Sheet

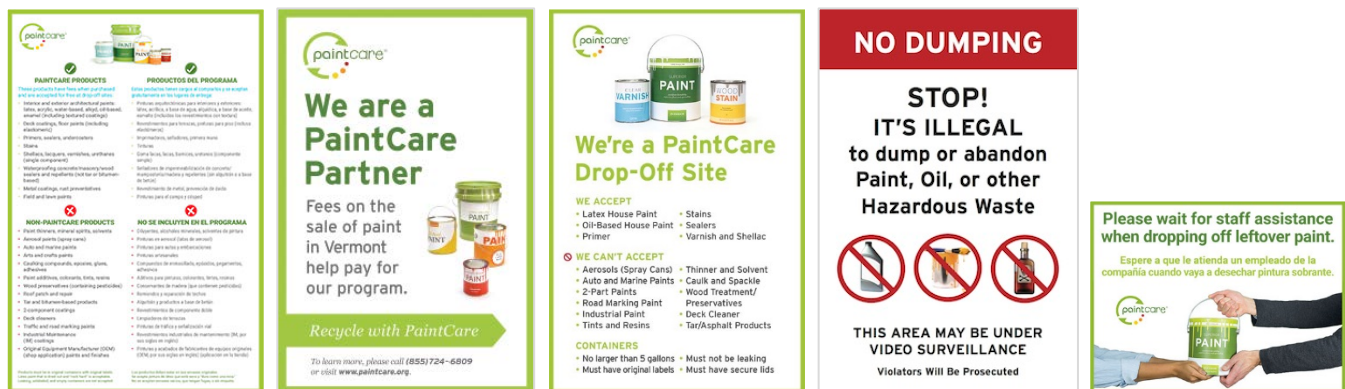
Full-size versions of each of the following materials are included in the appendix and can be downloaded from paintcare.org/vt:

- ◆ Brochures and mini cards designed to help the public find drop-off sites and explain the program and fees.
- ◆ In-store posters and counter mats for the paint counter or checkout to provide general information about the program.
- ◆ Fact sheets formatted for easy printing and available from the PaintCare website. Fact sheets used the most are those for painting contractors and potential users of the large

volume pick-up service. Other fact sheets provide an overview of program requirements for retailers, reuse program, HHW programs, transfer stations, and other sites.

- ◆ Window posters and signs to identify and promote a drop-off location and direct the public to PaintCare for more information about the program.

Signage. PaintCare developed a number of signs for drop-off sites to help them let the public know about the program, screen program products, and address concerns they have about illegal dumping. Drop-off sites may order the following signs: Program Products Sign (English/Spanish), Program Partner Sign, Combination (program partner with simplified products list), No Dumping, and Please Wait for Assistance. Larger versions of these signs are included in the appendix can be found online at www.paintcare.org/signs.



Website and Site Locator. PaintCare's site locator is easy to use and helps households and businesses find the nearest paint drop-off site.

The website also includes information about source reduction, reuse and recycling for all three audiences (consumers, contractors, and retailers) and has dedicated pages for each audience.

PaintCare Hotline. PaintCare operates a weekday hotline to assist the public with finding the nearest drop-off site and to answer questions about the program. The primary hotline staff person speaks English and Spanish.

Social Media. PaintCare's national Facebook presence has grown significantly in the past year. Facebook will be used to promote paint stewardship principals of buying the right amount of paint, using up leftovers, as well as passing paint to someone who can use it, and recycling it at a drop-off site.

Face-to-Face. PaintCare's Vermont program manager will continue to make presentations to stakeholders and attend selected home shows, painting contractor pro-shows, and other in-person outreach activities.

Joint Projects with Local Government. PaintCare offers to support local governments that wish to co-promote PaintCare along with their other waste or recycling outreach. Local government agencies may request design assistance and financial support proportional to the advertising dedicated to PaintCare. The joint outreach projects fact sheet and form included in the appendix provide additional details.

Public Radio. Vermont Public Radio has proven to be an excellent medium for reaching PaintCare's consumer audience. When the financial position of the program improves, and if participation decreases, PaintCare will resume newspaper advertising.

Newspaper Ads. PaintCare previously advertised individual sites in local newspaper, and discontinued newspaper advertising in summer 2015. When the financial position of the program improves, and if participation decreases, PaintCare will resume newspaper advertising.

Outreach Firm

PaintCare conducts marketing activities for all New England states with one agency, Connecticut-based-Mascola Group. Mascola manages media buying (and issue press relations, if needed) in Vermont.

In-House Design

Most materials (e.g., brochures, fact sheets, newspaper ads), website, and online/social media are designed by PaintCare's in-house communications team and customized for each state or jurisdiction. These design expenses are not part of the Vermont outreach budget; they are rolled into corporate costs, of which Vermont pays its relative portion as described in the budget discussion of this plan.

Section 6. Paint Sales and Projected Collection Volumes

Statutory Citation

10 V.S.A. § 6673. PAINT STEWARDSHIP PROGRAM

(a) The plan shall address the following:

(6) Establish goals to reduce the generation of postconsumer paint, to promote the reuse of postconsumer paint, and for the proper management of postconsumer paint as practical based on current household hazardous waste program information.

Section Overview

This section discusses:

- ◆ Architectural paint sales in Vermont
- ◆ Studies and data regarding available collection volumes of postconsumer architectural paint
- ◆ Projected collection volumes – past and future

A. PAINT SALES

Due to complex distribution chains that often include layers of distributors between a manufacturer and final point of sale, most manufacturers do not know the volume of their paint sold into each individual state. To address this, PaintCare commissioned a study in 2012 by a research firm specializing in coatings industry analysis and economic forecasting. The firm utilized key indicators including existing home sales, housing starts, state-level employment rates and commercial vacancy rates to build a national and state-level model for predicting annual sales of architectural paint. While the results of the study were relatively accurate for several states that launched PaintCare programs prior to Vermont, they were off significantly for Vermont, where sales were 42% below projections for the first year of the program. This led to the need for a fee increase in 2016 to increase program revenue.

Since the launch of the program, actual paint sales have been reported to PaintCare. As a result, better planning is possible for future year budgets, though sales may also fluctuate – increase or decrease – at any time in response to economic conditions, weather, and other unpredictable factors.

B. PROJECTED COLLECTION VOLUME AND RECOVERY RATE

Paint is designed to be fully consumed through application to walls, buildings, and other surfaces. Although the amount of postconsumer paint received through collection programs is measurable, it is difficult to determine the total quantity of postconsumer paint that is leftover, unwanted, and available for collection at any given time. The lag time between the purchase of paint and the decision that the unused product is unwanted and the additional time taken to return it to a drop-off site can vary greatly by individuals. Architectural paint products also have a long shelf-life, so consumers purchasing paint in one year may not decide that the unused portion is unwanted for several years.

Prior to the start of the program, and as discussed in the original program plan, PaintCare considered data from several studies on leftover paint volumes and examined long-running Canadian paint collection programs and PaintCare's longest running program in Oregon to anticipate the volume of paint that would be collected in Vermont. The studies and data concluded that about 10% of paint is leftover annually, and that mature paint collection programs could retrieve up to 75% of the leftover paint, equating to a 7.5% recovery rate. [Note: ANR uses the term recovery rate for other waste management programs to mean the percentage of a material collected that is recycled. PaintCare uses it to mean the volume of paint collected (or more accurately, processed) divided by the volume of paint sold in the same period.]

The recovery rate in Vermont was significantly higher than anticipated as shown in the following table.

GALLONS SOLD AND PROCESSED, AND RECOVERY RATES

	YEAR 1 MAY 2014 – JUNE 2015 (14 MONTHS)	YEAR 2 FY2016 (12 MONTHS)
Gallons Sold	1,209,990	1,070,534
Gallons Processed	116,691	108,466
Recovery Rate	9.6%	10.1%

The exact reasons for the high recovery rate are unknown.

While it is possible that a large portion of paint collected in the first two reporting periods was stored up paint from many years of accumulation, collection volumes remained high into the third year, indicating either that there are still large volumes of stored up paint to clear out or that Vermont participation is simply higher than in other paint collection programs.

If the latter, a higher participation levels might be explained by the fact that Vermont had a substantial number of HHW programs prior to the PaintCare program so residents of the state may be well informed and accustomed to using HHW/paint management services.

Vermonters are also known to be very environmentally conscious. The state has ranked as the greenest or most eco-friendly by a number of sources. Being so environmentally-minded may contribute to Vermont's high paint recycling rates.

The cause could also be related to sales. Sales may have been down during the last few years due to economic or other local reasons, but the volume of paint collected remained high, leading to a higher recovery rate to be higher.

Without knowing the reason, PaintCare chose to assume that the recovery rates will remain high and adjusted its fee structure in 2016 to allow for a financially-sustainable program with a high recovery rate.

Section 7. Budget and PaintCare Fee

Statutory Citation

10 V.S.A. § 6673. PAINT STEWARDSHIP PROGRAM

(b) The producer or stewardship organization shall submit a budget for the program proposed under subsection (a) of this section, and for any amendment to the plan that would affect the program's costs. The budget shall include a funding mechanism under which each architectural paint producer remits to a stewardship organization payment of a paint stewardship assessment for each container of architectural paint it sells in this State. Prior to submitting the proposed budget and assessment to the Secretary, the producer or stewardship organization shall provide the budget and assessment to a third-party auditor agreed upon by the Secretary. The third-party auditor shall provide a recommendation as to whether the proposed budget and assessment is cost-effective, reasonable, and limited to covering the cost of the program. The paint stewardship assessment shall be added to the cost of all architectural paint sold in Vermont. To ensure that the funding mechanism is equitable and sustainable, a uniform paint stewardship assessment shall be established for all architectural paint sold. The paint stewardship assessment shall be approved by the Secretary and shall be sufficient to recover, but not exceed, the costs of the paint stewardship program.

Section Overview

This section discusses:

- ◆ PaintCare's funding mechanism
- ◆ Budget categories
- ◆ Annual budget
- ◆ Fee structure
- ◆ Independent audit

A. INTRODUCTION

Critical to the success of the Vermont Paint Stewardship Program is a sustainable funding mechanism. Architectural paint manufacturers – through representation by PaintCare – must establish a funding system to cover the full cost of implementing the program.

The PaintCare program works by placing a paint stewardship assessment (PaintCare fee) on each container of architectural paint sold in Vermont. The fee must be set at a rate to cover, but not exceed, the cost of implementing the program.

B. FUNDING MECHANISM

As the representative organization, PaintCare directs and implements all aspects of the Vermont Paint Stewardship Program on behalf of participating manufacturers. Funding for program implementation comes from registered manufacturers to PaintCare through PaintCare fees on new paint sales. The following steps describe the process:

- (1) Manufacturers add the PaintCare fee to the wholesale price of all architectural paint they sell in Vermont (in containers of 5-gallons and smaller).
- (2) Retailers and distributors pass the PaintCare fee to their customers by including it in the price of architectural paint for sale in Vermont.
- (3) When consumers buy architectural paint in Vermont, the PaintCare fee is included in the purchase price. As a result, retailers (and distributors) recoup the fees they pay when purchasing architectural paint from their suppliers.
- (4) Within a designated timeframe (typically monthly), manufacturers report sales of architectural paint for the previous reporting period and remit to PaintCare the corresponding PaintCare fees. Manufacturers recoup the fees they are paying to PaintCare because the fees are included in their wholesale price when they sell the paint to their dealers.

C. BUDGET CATEGORIES

The following provides a general description of the budget categories discussed in this section.

Revenue. Program revenue is derived from fees placed on new paint sales. Paint containers are categorized into four sizes, each with a different fee rate.

Paint Processing. Paint processing is the largest expense of the program. It is billed based by weight (per pound) or by the bin, and includes the cost of sorting mixed bins of latex and oil-based paint.

Paint Transportation. Paint transportation is another significant expense. It is billed by the bin and includes a minimum stop charge.

Collection Supplies and Support. Collection supplies include paint collection bins (single-use and reusable), spill kits, training materials, and miscellaneous supplies for drop-off sites to maintain safe and clean operations.

Communications. Communications costs include advertising and promotional materials to increase awareness of the program and use of the drop-off sites.

Personnel, Professional Fees, and Other. This category includes a portion of the salary (based on relative state populations) of one full-time employee managing the Vermont and Maine programs, legal costs for negotiating contracts, travel, office supplies, and other logistical and professional support.

State Administrative Fees. PaintCare pays ANR an annual administrative fee of \$15,000.

Corporate Activity. Corporate expenses (referred to as administrative expenses in the original program plan) are shared by all states and jurisdictions that have passed a paint stewardship law. They include the salaries of corporate staff who work on activities for all states (e.g. communication staff), construction of data management systems, PaintCare-wide financial audits, legal fees, and general communications. Allocation of corporate expenses is based on the relative population of the state/jurisdiction (when the population of all PaintCare states/jurisdictions are combined). Vermont's current allocation is 1.1% of corporate expenses.

E. BUDGET AND FEE STRUCTURE

The annual budget and fee structure in this plan are the same as the one in the March 2016 program plan. Annual sales appear to have decreased in the third year of the program (July 2016-June 2017), resulting in less revenue than projected and shown in the budget below. However, expenses have also been lower than projected during this same period; therefore, PaintCare is not proposing any changes to the budget or fees approved in 2016 and presented below. PaintCare will be watching revenue and expenses carefully each month to ensure the new fee structure is sufficient to cover program costs.

REVENUE	BUDGET
Larger than half pint to smaller than 1 gallon	\$ 114,000
1 gallon	635,000
Larger than 1 gallon up to 5 gallons	115,000
Total revenue	864,000
EXPENSES	
Paint processing	470,000
Paint transportation	110,000
Collection supplies and support	80,000
Communications	25,000
Personnel, professional fees, and other	48,000
State administrative fees	15,000
Allocation of corporate activity	43,000
Total expenses	791,000
Change in net assets (revenue less expenses)	73,000

Program Deficit

As of June 30, 2016, the program carries a deficit of approximately \$600,000. The revised fee structure and budget provide approximately \$70,000 in surplus annually, resulting in a 9-year pay off period of the deficit.

D. FEE STRUCTURE

The following fee structure was approved in 2016 by ANR. The original fee structure is also shown for historical purposes.

CONTAINER SIZE	ORIGINAL FEE	CURRENT FEE
Half pint or less	\$ 0.00	\$ 0.00
More than half pint to less than 1 gallon	\$ 0.35	\$ 0.49
1 gallon	\$ 0.75	\$ 0.99
More than 1 gallon up to 5 gallons	\$ 1.60	\$ 1.99

F. AUDIT OF THE PAINTCARE FEE

The budget and fee structure presented in the 2016 program plan were reviewed by an independent auditor. The auditor reviewed the budget and fee structure to ensure they are cost-effective, reasonable, and limited to covering the cost of the program.

Since the budget and fee structure in this program plan are the same as the 2016 program plan, a new audit was not necessary. A copy of the auditor's letter from the 2016 program plan is included in the appendix.

Section 8. Annual Report and Financial Audit

Statutory Citation

10 V.S.A. § 6677. PRODUCER REPORTING REQUIREMENTS

No later than October 15, 2015, and annually thereafter, a producer or a stewardship program of which the producer is a member shall submit to the Secretary a report describing the paint stewardship program that the producer or stewardship program is implementing as required by section 6673 of this title.

Section Overview

This section discusses:

- ◆ Content of the required annual report
- ◆ Content and process for the required annual financial audit

A. ANNUAL REPORT

PaintCare submits an annual report by October 15 of each year to ANR. The first annual report covered the 14-month period of May 1, 2014 – June 30, 2015. The second covered July 1 2015 – June, 30 2016 and all future reports will cover the 12-month period of July 1 – June 30.

At a minimum, the annual reports include:

1. A description of the methods the producer or stewardship program used to reduce, reuse, collect, transport, recycle, and process postconsumer paint statewide in Vermont.
2. The volume and type of postconsumer paint collected by the producer or stewardship program at each collection center in all regions of Vermont.
3. The volume of postconsumer paint collected by the producer or stewardship program in Vermont by method of disposition, including reuse, recycling, energy recovery, and disposal.
4. An independent financial audit of the paint stewardship program implemented by the producer or the stewardship program.
5. The prior year's actual direct and indirect costs for each program element and the administrative and overhead costs of administering the approved program.
6. Samples of the educational materials that the producer or stewardship program provided to consumers of architectural paint.

B. FINANCIAL AUDIT

PaintCare undergoes an annual, independent financial audit of the organization as a whole. The audit firm is chosen, periodically, through a competitive bid process. The cost of the audit is shared by all PaintCare states, and is paid by the PaintCare fees.

While the audit is conducted of the organization as a whole, it also serves as the annual audit, conducted by an independent auditor, of the total cost of implementing the Vermont Paint Stewardship Program. The independent audit report contains a Schedule of Activities that displays the Vermont program as a business unit.

The independent audit is conducted in accordance with auditing standards generally accepted in the United States of America. Those standards require that the auditing firm plan and perform the audit to obtain reasonable assurance that financial statements are free of material misstatements. The audit also includes examination, on a test basis, of evidence supporting the amounts and disclosures in the financial statements; evaluation of the accounting principles used and any significant estimates made by management; and appraisal of the overall financial statement presentation. PaintCare includes the audited financial statements with its annual reports to ANR.

Appendix A

PaintCare Board of Directors

PaintCare Board of Directors (August 2017)

Steve DeVoe, Chairman	Kelly-Moore Paint Company, Inc.
Steve Dearborn, Vice-Chairman	Miller Paint
Barry Chadwick	Benjamin Moore and Co.
David Cole	PPG
John Gilbert	Behr Process Corporation
John McLaughlin	RPM
John Vanderpool	True Value
Meika Vogel	Vogel Paint
Tim Vogel	Cloverdale Paint
Mike Weber	Hirshfield's Paint
George Young	The Sherwin-Williams Company

Appendix B

Registered Manufacturers and Brands



Registered Manufacturers

Vermont Paint Stewardship Program as of 8/2/2017

- 1 Ace Hardware Paint Division
- 2 AFM Safecoat
- 3 Akzo Nobel Paints
- 4 American Formulating & Manufacturing
- 5 Ames Research Laboratories, Inc.
- 6 Amitha Verma, LLC
- 7 Amteco, Inc.
- 8 Anchor Paint Manufacturing Company of Denver Inc
- 9 Anvil Paints & Coatings Inc.
- 10 Armstrong-Clark Company
- 11 Basic Coatings
- 12 Behr Process Corporation
- 13 Behr
- 14 Benjamin Moore & Co.
- 15 Betco Corporation LTD
- 16 Beyond Paint
- 17 Bioshield Paint
- 18 Bond Distributing, Ltd.
- 19 Calibre Environmental Ltd.
- 20 California Products Corporation
- 21 CBD Group
- 22 Chalk Country Paint
- 23 Chittenden Solid Waste District
- 24 Clayton Corp
- 25 Clemons Concrete Coatings
- 26 Clinical Paints
- 27 Coating Development Group Inc.
- 28 Complementary Coatings Corp.
- 29 Conklin Company, Inc.
- 30 Convenience Products
- 31 Country Chic Paint Ltd.
- 32 Couture Collection, The
- 33 CRC Industries, Inc.
- 34 Custom Building Products, Inc.
- 35 Daly's Inc.
- 36 Daly's Wood Finishing Products
- 37 Davis Paint Co.
- 38 DavLaur Coatings
- 39 Dryvit Systems, Inc.



Registered Manufacturers

Vermont Paint Stewardship Program as of 8/2/2017

- 40 Duckback Products / Division of Duckback Acquisition Corporation
- 41 Eagle IFP Company
- 42 Eco Safety Inc.
- 43 Eco Safety Products
- 44 Ecobond LBP, LLC
- 45 ECOS Paints
- 46 Emiron Corporation
- 47 EnviroCare Corporation
- 48 Farrow & Ball Ltd
- 49 Farwest Paint Mfg. Company
- 50 Fine Paints of Europe
- 51 Forrest Paint Co.
- 52 Franklin Paint Company
- 53 Gaco Western LLC
- 54 Gardner-Gibson
- 55 GDB International, Inc.
- 56 Gemini Coatings, Inc.
- 57 Gemini Industries, Inc.
- 58 Golden Artist Colors, Inc.
- 59 Great Walls Supply, Inc
- 60 H. Behlen & Bro.
- 61 Harrison Paint Company
- 62 Heartwood Corp
- 63 Heirloom Traditions Paint
- 64 Henry Company LLC
- 65 Homax Group Inc., The
- 66 Imperial Paints LLC
- 67 Insl-X Products
- 68 Kop-Coat, Inc.
- 69 Laticrete International, Inc.
- 70 Lauzon Distinctive Hardwood Flooring
- 71 Loop Recycled Products Inc.
- 72 Lullaby Paints
- 73 Mad Dog Paint Products, Inc.
- 74 Masterchem Industries LLC
- 75 Meoded Paint & Decoration
- 76 Meoded Paints and Plasters
- 77 Messmer's Inc.
- 78 Mikel and Company



Registered Manufacturers

Vermont Paint Stewardship Program as of 8/2/2017

- 79 Modern Masters, Inc.
- 80 Muralo Company
- 81 NCH Corporation
- 82 New Image Coatings, LLC
- 83 Old Masters
- 84 Old Town Paints LLC
- 85 Old Village Paint, Ltd
- 86 One Time
- 87 Osmo Holz und Color GmBH &Co.KG/ Osmo NA
- 88 Osmo USA
- 89 Penofin
- 90 Performance Coatings, Inc.
- 91 Perma-Chink Systems, Inc.
- 92 PPG Architectural Finishes, Inc.
- 93 Preserva Products, Ltd
- 94 Protek Paint LTD
- 95 Quikrete
- 96 Ready Seal, Inc.
- 97 Richard's Paint Manufacturing Co Inc.
- 98 Roman Decorating Products, LLC
- 99 RPM Wood Finishes Group, Inc.
- 100 Rudd Company, Inc.
- 101 Rust-Oleum Corporation
- 102 SamaN
- 103 Sansin Corporation, The
- 104 Sashco, Inc
- 105 SaverSystems, Inc.
- 106 Seal-Krete
- 107 Seymour of Sycamore
- 108 Sheffield Bronze Paint Corp.
- 109 Sherwin-Williams
- 110 Sika Corporation
- 111 Skybryte Company
- 112 Southern Diversified Products, LLC
- 113 Sto Corp.
- 114 Structures Wood Care, Inc.
- 115 Sunnyside Corporation
- 116 Sutherland Welles Ltd.
- 117 Sydney Harbour Paint Company



Registered Manufacturers

Vermont Paint Stewardship Program as of 8/2/2017

- 118* Textured Coatings of America, Inc.
- 119* Texturline Decorative Products
- 120* Timber Pro Coatings
- 121* TriSealUSA, LLC
- 122* True Value Manufacturing Company
- 123* United Gilsonite Laboratories (UGL)
- 124* United States Gypsum Company
- 125* Valspar Corporation
- 126* Van Sickle Paint Mfg.
- 127* Vanex, Inc.
- 128* Vermont Natural Coatings, Inc.
- 129* Ware Products LLC
- 130* Waterlox Coatings Corporation
- 131* Wood Iron Wood Finishes, Inc.
- 132* XIM Products Inc.
- 133* Yenkin-Majestic Paint Corp.
- 134* Yolo Colorhouse LLC



Registered Brands

Vermont Paint Stewardship Program as of 8/2/2017

2010 (all products)	Ames Safe-T-Deck Granulated	Andy Sez (all products)
2201 Grabber Primer	Ames SafeT-Deck Smooth	Annie Sloan® Chalk Paint®
268 Ceiling Paint	Ames Super Elasto Barrier	Anvil Deck-A-New
360 Grey	Ames Super Primer	Anvil Eclipse
360 Grey	Ames Vapor Barrier	Anvil Gator Grip
360 Primer	Amitha Verma	Anvil Tex-Wall
360 Primer	Amteco 3200 Satin Varn	Anvil Ultra-Tex
563 Enamel Undercoater	Amteco Silicone (various colors)	Anvil Universal Latex Primer
900 Clear Coat	Amteco TWP (various colors)	Apoc
900 Clear Coat	Amteco Water Based Satin Varn	Aqua Mix Aqua Stain
A-100	Amteco White Satin Varn	Aqua Mix Enrich-n-Seal
Accolade®	Anchor 1600 Series Anco Inhibitive Primers	Aqua Mix High Gloss Sealer
Ace Contractor Pro Paints and Primers	Anchor Environ II DTM Latex Enamel 3800 Series	Aqua Mix Penetrating Sealer
Ace Essence Paints	Anchor Fin Seal 1109	Aqua Mix ProSolv
Ace Great Finishes Interior Stains & Varnishes	Anchor Flexi-Coat 100% Acrylic Latex Exterior Primer 3601	Aqua Mix Seal & Finish Low Sheen
Ace Interior Premium Enamels	Anchor Flexi-Coat 100% Acrylic Latex Exterior Satin Finish 3600 Series	Aqua Mix Sealer's Choice Gold
Ace Royal Finest Paint	Anchor Flexi-Coat Plus 100% Acrylic Latex Exterior Satin Finish CC-1805 Series	Aqua Mix Stone Enhancer
Ace Royal Paints and Primers	Anchor Poly U Super Spar Varnish 1170	Aqua Mix UltraSolv
Ace Rust Stop Enamels and Primers	Anchor Richwood Oil Stain 3300 Series	Aqua Resin Floor Finish
Ace Sealtech Waterproofers	Anchor Satin Speed Stain 2500 Series	Aqua Resin Stain Finish
Ace Sensations Paint	Anchor Signature Interior Eggshell Latex 5100 Series	Aqua Resin Trim Enamel Paint
Ace Simply Magic Ceiling Paint	Anchor Signature Interior Flat Latex 5000 Series	Aqua Zar (All Gloss Levels)
Ace Stain	Anchor Sun Up Oil Based House Primer 1516	Architect Series
Ace Stain Halt	Anchor Unikote Interior Eggshell Latex P-200 Series	Armstrong Stains
Ace Wood Royal Exterior Stains	Anchor Unikote Interior – Exterior Semi-Gloss Latex P-300 Series	Artistic Finishes
Acri-Soy Penetrating Clear Sealer	Anchor Unikote Interior Flat Latex P-100 Series	Aspire
Advanced Technology UMA	Anchor Unikote Int-Ext Gloss Oil Enamel P-600 Series	Bakor
Advanced Technology UMA	Anchor Unikote Int-Ext Semi-Gloss Oil Enamel P-400 Series	Barn & Fence Paints
AFM Safecoat	Anchor Unikote Latex Drywall Primer P1508	Basic Coatings Hardwood Floor Refinisher Gloss
Allfor (all products)	Anchor Unikote Porch & Deck Latex Enamel P1400 Series	Basic Coatings Hardwood Floor Refinisher Satin
Allpro Commercial Grade Waterproofing Sealer	Anchor Unikote Waterborne Masonry Sealer P-1122	Behr
Allpro Commercial Grade Waterproofing Sealer	Anchor Wood Wonder Latex Stain	Behr Premium Plus
Allpro Concrete Floor Sealer	Andersons	Behr Premium Plus Ultra
Allpro Concrete Floor Sealer		Behr Premium Select
Allpro Concrete Waterproofing Paint		Behr Pro-X
Allpro Concrete Waterproofing Paint		Bellezza
Allpro Masonry Waterproofing Sealer		Benchmark
Allpro Masonry Waterproofing Sealer		Benjamin Moore Advance
Allpro Multi-Surface Water Repellent		Benjamin Moore Alkyd Dulamel
Allpro Multi-Surface Water Repellent		Benjamin Moore Arborcoat
Alumify		Benjamin Moore Aura
American Accents		Benjamin Moore Ben
American Pride Paint		Benjamin Moore Benwood Finishes
Ames Block & Wall, acrylic		Benjamin Moore Block Filler
Ames Block & Wall, rubber		Benjamin Moore Color Samples
Ames Blue Max		Benjamin Moore Concepts
Ames Clear Seal		Benjamin Moore Concrete Waterproof Sealer
Ames Liquid Granite		Benjamin Moore Dry Fall
Ames Paint & Prime		Benjamin Moore Eco Spec
Ames Reflective Paint		Benjamin Moore Fresh Start Primers
		Benjamin Moore Grand Entrance



Registered Brands

Vermont Paint Stewardship Program as of 8/2/2017

Benjamin Moore Impervex	Benjamin Moore Sure Seal Primer	Chimney Rx Masonry Chimney
Benjamin Moore Ironclad	Benjamin Moore Ultra Spec (does not include Ultra Spec HP)	Water Repellent
Benjamin Moore Knockdown	Benjamin Moore Vinyl Latex Flat	Clark+Kensington Paints
Benjamin Moore Marvelux	Benjamin Moore Waterborne Ceiling Paint	Classic 99 Int
Benjamin Moore Moorcraft Super Craft	Benjamin Moore Waterborne Satin Impervo	Classic Cote
Benjamin Moore Moorcraft Super Hide	BenMate Danish Tung Oil Finish	Clay Paint
Benjamin Moore Moore's Floor and Patio	Best Look®	Clinical Paints
Benjamin Moore Moore's Kitchen and Bath	Beyond Paint All In One Paint (various colors)	Collection of Joy Argente
Benjamin Moore Moore's Muresco	Beyond Paint Countertop Paint	Collection of Joy Oro
Benjamin Moore Natura	Beyond Paint Multi Purpose Sealer	ColorAccents Interior Alkyd
Benjamin Moore Premium Exterior Stain	BIN	Color Decor
Benjamin Moore Pro Finish	Biocontrol Prime-n-Seal	Color Extra
Benjamin Moore Regal Classic	Black Jack	Colorfast
Benjamin Moore Regal Select	Blacknight	Color House Premium Ceiling Paint
Benjamin Moore Satin Impervo	Block Filler	Color Made Simple
Benjamin Moore Satin Impervo	Blok-Tite™	Color Mist™
Benjamin Moore Studio Finishes (except Chalkboard Paint)	Blue Athletic Field Marker	ColorPlace®
Benjamin Moore Super Craft	Blue Seal	Color Prime - W™
Benjamin Moore Super Spec (does not include Super Spec HP)	BMI 100 Primer	Color Prime™
Benjamin Moore Super Spec HP 220 Latex Flat Fire Retardant Coating	Breathe Safe (all products)	Color Solutions®
Benjamin Moore Super Spec HP Acrylic Metal Primer	Bright Life	Color Wheel
Benjamin Moore Super Spec HP Alkyd Metal Primer	Bruce Fresh Finish	Colour Crete
Benjamin Moore Super Spec HP Clear Acrylic Sealer	Builders Masterpiece	Comex Paint
Benjamin Moore Super Spec HP DTM Acrylic Gloss	Builders Solution Int.	Conco
Benjamin Moore Super Spec HP DTM Acrylic Low Lustre	Bulls Eye	ConFlex XL
Benjamin Moore Super Spec HP DTM Acrylic Semi-Gloss	Bunker Hill DIKON Barn & Fence	Contractor (all products)
Benjamin Moore Super Spec HP DTM Alkyd Gloss Enamel	C&M Coatings	Controlz Primers
Benjamin Moore Super Spec HP DTM Alkyd Low Lustre	CAB/Acrylic Clear Topcoat	Cook Paint Brands
Benjamin Moore Super Spec HP DTM Alkyd Semi-Gloss Enamel	CAB/Acrylic White Topcoat	Cool-Text
Benjamin Moore Super Spec HP Rust Converter	Cabinet, Door& Trim Paint	Coolwall
Benjamin Moore Super Spec HP Shop-Coat Alkyd Metal Primer	Cabot	Core Essentials
Benjamin Moore Super Spec HP Universal Metal Primer	Cabot "The Finish"	Coronado Aqua Plastic
Benjamin Moore Super Spec HP Urethane Alkyd Gloss Enamel	Cabot Australian Timber Oil	Coronado Ceiling Paint
	Cabot Cabothane	Coronado Crylicote
	Cabot Clear solutions	Coronado Elastite
	Cabot OVT	Coronado Final Touch
	Cabot Problem Solver	Coronado Gold
	Calce - Cielo	Coronado Grip & Seal
	California (all products)	Coronado Maxum Stains
	CalPro 2000 (all products)	Coronado Optimum Hide
	Cashmere Interior	Coronado Rust Scat
	Casual Spaces	Coronado Super Kote 1000
	Cedartone WB Penetrating Stain	Coronado Super Kote 3000
	Ceramic Pro House Paint (all products)	Coronado Super Kote 5000 (does not include the dry falls)
	Ceramithan Clear Finish	Coronado Supreme
	Chalk Country Paint	Coronado Texcrete
	Chemsearch - Conquest	Coronado Texcrete WB
		Coronado Tough Shield
		Coronado Tough Tex
		Coronado Tough Walls
		Corotech Electrostatic Enamel Semi-Gloss
		Corotech Hammertone Enamel



Registered Brands

Vermont Paint Stewardship Program as of 8/2/2017

Corotech Organic Zinc Rich Primer	Defy Clear Wood Finish	DuPont™ Paver Armor Pro™
Corotech Pre-Cat Epoxy Eggshell	Defy Composite Deck Sealer	Premium Salt Repelling Natural
Corotech Pre-Cat Epoxy Semi-Gloss	Defy Deck Stain for Hardwoods	Look Sealer
Corotech Prep All Universal Primer	Defy Epoxy Fortified Wood Stain	DuPont™ Paver Armor Pro™
Corotech Quick Dry Acrylic Spray	Defy Extreme Wood Stain	Premium Semi Gloss Color
DTM	Defy Original Synthetic Wood Stain	Enriching Sealer
Corotech Quick Dry Enamel Gloss	Demandit®	DuPont™ Paver Armor Pro™
Corotech Quick Dry Enamel Semi-	Design Accents	Premium Waterproofing Natural
Gloss	Design Basics Interior	Look Sealer
Corotech Rust Arrestor	Designer Drylok (all colors)	DuPont™ Premium Stone Sealer
Corotech Shop Cote Primer	Devine	DuPont™ Premium Stone Sealer &
Cottage Paint (various colors)	Devoe Coatings Light Duty (Devflex	Enhancer
Cottage Paint Acrylic Varnish	and Devguard)	DuPont™ Saltillo Tile Sealer & Finish
Cottage Paint Clear Primer	Devoe Paint	DuPont™ Semi Gloss Sealer &
Cottage Paint Serenity (various	Diamond Brite	Finish
colors)	Diamond Collection	DuPont™ Stone Sealer
Country Chic Paint - Tough Coat	DIKON Barn & Fence (Bunker Hill)	DuPont™ Stone Sealer & Enhancer
Cover & Go	DIKON Dairy Enamel	DuPont™ StoneTech® Professional
Cover-All Primer (all products)	Dimensional Metals 2	Enhancer
Crackle Lacquer Clear	Dimensions	DuPont™ StoneTech® Professional
CRC® Rust Converter	Dirt Fighter Interior	Enhancer Pro™ Sealer
CRC® Zinc-It® Instant Cold	Do it Best	DuPont™ StoneTech® Professional
Galvanize™	Do-It-Best	Grout Release
Crema	Do-It Best Waterproofer	DuPont™ StoneTech® Professional
Crystal Brush	Drylok Concrete Floor Paint (all	Heavy Duty Exterior Sealer
CrystalFin: Gloss , Semi-Gloss, Satin	colors)	DuPont™ StoneTech® Professional
and Matte	Drylok Concrete Protector	Heavy Duty Sealer
CrystalFin Floor Finish: Gloss and	Drylok E1 Floor Paint (all colors)	DuPont™ StoneTech® Professional
Satin	Drylok Extreme	High Gloss Finishing Sealer
CT-100	Drylok Latex Base Masonry	DuPont™ StoneTech® Professional
Daly's Deck Stain	Waterproofer (all colors)	High Gloss Lacquer
Daly's Log Oil	Drylok Natural Look Sealer	DuPont™ StoneTech® Professional
Daly's Semi-Transparent Exterior	Drylok Oil Base Masonry	Impregnator Pro® Sealer
Stain	Waterproofer (all colors)	DuPont™ StoneTech® Professional
Daly's Waterborne Deck Stain	Drylok Water Based 5% Silicone	Maximum BulletProof® Sealer
Daly's Waterborne Stain	Drylok Wet Look Sealer	DuPont™ StoneTech® Professional
Daly's Wood Stain	Duckback	Natural Stone Countertop Sealer
Davis/Datex	Duckback - All Purpose Waterproof	DuPont™ StoneTech® Professional
Davis/Hold Tite	Duckback - Composite Deck Sealer	Paver Sealer & Enhancer
Deckmaster Clear Sealer	Duckback - Premium Translucent	DuPont™ StoneTech® Professional
DeckScapes Ext	Finish	Salt Water Resistant Sealer
Decorative Painter's Products	DuPont™ Granite & Marble	DuPont™ StoneTech® Professional
Deft Clear Wood Finish Brushing	Countertop Sealer	Sealer
Lacquer	DuPont™ High Gloss Sealer & Finish	DuPont™ StoneTech® Professional
Deft Deftane Polyurethane	DuPont™ Paver Armor Pro™	Semi Gloss Finishing Sealer
Deft Defoil Danish Oil Finish	Premium High Gloss Color	Dura Clad
Deft Interior Polyurethane	Enriching Sealer	DuraCraft Acrylic Latex
Deft Lacquer Sanding Sealer	DuPont™ Paver Armor Pro™	Duraseal
Deft Step Saver Stain and Finish	Premium No Gloss Color	DuraSoy One Paint
Deft Water Based Polyurethane	Enriching Sealer	DuraSoy Pro Paint
Deft Water Borne Clear Wood Finish	DuPont™ Paver Armor Pro™	Duration
Acrylic	Premium Penetrating Natural	Duron
Deft Wood Stain Oil Based	Look Sealer	Dutch Boy
Deft Wood Stain Water Based		Dutch Standard (all products)



Registered Brands

Vermont Paint Stewardship Program as of 8/2/2017

Dynamite	Farrow & Ball Exterior Eggshell	Gaco H27 Series
Eagle Armor Seal	Farrow & Ball Floor Paint	Gaco Roof
Eagle Chattanooga Sealer	Farrow & Ball Full Gloss	Gaco Shield
Eagle Concrete Polish	Farrow & Ball Interior /Exterior Wood Primer & Undercoat	Galvanized & Aluminum Primer
Eagle Exterior Dye	Farrow & Ball Interior Wood Primer & Undercoat	Gardner
Eagle Gloss Coat	Farrow & Ball Masonry & Plaster Stabilising Primer	Gemini Coatings
Eagle Interior Dye	Farrow & Ball Masonry Paint	Gemini Coatings Craftsman Collection
Eagle Natural Seal	Farrow & Ball Metal Primer & Undercoat	Gemini Coatings Gem Clear
Eagle Paver Sealer	Farrow & Ball Modern Emulsion	Gemini Coatings Gem Coat
Eagle Premium Coat	Farrow & Ball Wall Ceiling Primer & Undercoat	Gemini Coatings Gem Cryl
Eagle Satin Seal	Farrow & Ball Wood Floor Primer & Undercoat	Gemini Coatings Gem Dye
Eagle Solid Color Sealer	Farrow & Ball Wood Knot & Resin Blocking Primer	Gemini Coatings Gem Glo
Eagle Supreme Seal	Faux Impressions®	Gemini Coatings Gemini
Eagle Top Coat	Field Marking Paints	Gemini Coatings Gemini Tone Stain
Easy Care	Finecoat 2	Gemini Coatings Gem Pro
Easy Color	Fine Paints of Europe ECO	Gemini Coatings Gem Tone
EasyLiving®	Fine Paints of Europe Eurolux	Gemini Coatings Gem Var
Eco Best Deck, Fence and Siding Wood Stain	Fine Paints of Europe Eurothane	Gemini Coatings Gulf Synthetics - PermaBond
Eco Best Decorative Concrete Stain	Fine Paints of Europe Hollandlac	Gemini Coatings Master's Magic
Eco Best Gloss Finish Sealer	Fixall (all products)	Gemini Coatings Storm Shield
Ecobond LBP	Flash Bond 400	Gemini Coatings Titanium Series
EcoFlor Decorative Floor Finish	Flash Bond 400	Gemini Coatings Total Wood Preservative
Economy	Flex Bon	Gemini Coatings TWP
EcoSelect® Zero VOC	Flood Pro	Gemini Coatings WFS
ECOS Paints	Floor-A-Thane (all products)	Gemini Coatings Wood Finishers Supply
Eco-Tuff Coatings	Fluorescent Orange Field Marker	Geocel
Eco-Tuff Primers	Formby's	Glidden
Elements (all products)	Forrest Paint	Glidden Professional
Emerald	Franklin Paint - Halftime	Glitsa Gold Seal™ Finish
Eminence®	Franklin Paint - Winning Streak	Glitsa Gold Seal™ Lite Scent™ Finish
Emmet's Good Stuff Wood Finish	Frazee	Glitsa Gold Seal™ Stains (various colors)
Encase	Fred Myers	Glitsa High Performance Waterborne Finish
Enduradeck (all products)	French Lac	Glitsa Infinity II LVOC™ Finish
Endure House Paint (all products)	Fresco 2	GlitsaMax™ Finish
Enrich	Fres-coat (all products)	Glitsa Quality Seal™ Sealer
Enviropure	Fresh Kote	Glitsa Wood Flour Cement™
EnviroShield ES-100	Gaco A30 Series	Glitza TruSeal
EnviroShield ES-90	Gaco A31 Series	GlosThane Finish
Envirotech (all products)	Gaco A326 Series	Golden Glow Brands
Epo-Tex	Gaco A32 Series	GPM
Epoxy Shield	Gaco A3734 Food Safe	Grass Green Athletic Marker
Equinox	Gaco A38 Series	Grayseal (all products)
Essential Performance	Gaco A41 Series	Grid-Stripe (all products)
EverLast	Gaco A56 Series	Grip Coat (all products)
Everlife (all products)	Gaco Deck	Grossman's Majic
Evolve	Gaco H22 Series	GS88-1 Sealer
Excesior Coatings (all products)	Gaco H25 Series	GS99-1 Sealer
Exterior Limeproof Primer		
E-Z Kare		
Fabulon		
Farrow & Ball Dead Flat		
Farrow & Ball Estate Eggshell		
Farrow & Ball Estate Emulsion		



Registered Brands

Vermont Paint Stewardship Program as of 8/2/2017

Guardian Contractor Grade	Insl-X Prime Lock	Mad Dog Deck Fix (MDDF)
Guardian Professional Quality	Insl-X Pro-Plate Enamel - Rust	Mad Dog Primer (MDP)
H&C	Preventative Coating	Mad Dog Primer 2 (MDP 2)
Hammerite	Insl-X Rubber Based Pool Paint	Mad Dog Primer Smooth (MDPSM)
Hard Oil	Insl-X Seal Lock	Maintenance One
Harmony	Insl-X Stix	Maintenance Paint (Home Depot)
Harrison Paint (all products)	Insl-X Sure Step	Maintenance Pro
HD® Designs	Insl-X Tough Shield	Majic Aluminum Paint
HDP™ Water-Repellent Paint	Insl-X Tuffcrete	Majic Barn & Fence Paint
Heavy Bodied Glazing Stain (Various colors)	Insl-X Waterblock	Majic Barricade
Hemp Shield	Insl-X Waterborne Pool Paint	Majic Basement Paint
Henry/Bakor	Kilz	Majic Concrete Sealer
Henry Acryprime Recoat Primer	Kilz Casual Colors	Majic Diamond Hard Enamel
Henry Air Bloc 31 Brush/Spray	Kilz Color Place	Majic Diamond Hard Paint
Henry Aquaprim Primer	Kilz Pro-X	Majic Easy Spread
Henry Aquatac Primer	Kilz True Tone	Majic Exterior/Interior Paint
Henry Binder/Tack Emulsion	Kitchen & Bath (all products)	Majic Fence Paint
Henry Grey Elastomeric Roof Coating	Kolor Kote	Majic Field Marking Paint
Henry Light Tan Roof Coating	Kool Seal	Majic Floor Enamel
Henry Metalshield Rubber Based Gray Roof Coating	Krylon	Majic Floor Paint
Henry Metalshield Waterbased Elastomeric Roof Coating	Krylon Commercial	Majic House & Deck Stain
Henry Premium Elastomeric Base Coating	Kwal	Majic Kitchen & Bath Paint
Henry Premium Non-Fibered Aluminum	Lacquer Couture	Majic Latex Enamel
Henry RTC Coat	Lacrylic	Majic Lifestyle
Henry Solorflx Tan Elastomeric	Laura Ashley	Majic Pride
Henry Special Color Elastomeric	Lauzon wood Clear Finish	Majic Primer & Paint
Herbal Oil	Lauzon wood stain	Majic Professional
Heritage Collection All In One Paint	Lenmar 350 VOC Polyurethane Wood Finish	Majic Rust Kill Coating
HGTV Home	Lenmar Aqua-Plastic	Majic Stain Blocking Primer Sealer
High Solid Floor Oil	Lenmar Echo	Majic Town & Country
Homax Premixed Popcorn Ceiling Texture	Lenmar Evolution	Majic Waterproofing Sealer
Homax Premixed Wall Texture	Lenmar Interior Waterborne Wiping Stain	Majic Water Sealer
Homax Roll-On Texture	Lenmar QuickStain Waterborne Wiping Stain	Majic Wood Stain
Homax Wet Look Cure Seal	Lenmar Spar Varnish	Majic Wood Varnish
Homestead	Lifeline Accents	Martha Stewart Living
Impressions	Lifeline Acrylic	Martin Senour Paints
Infinity®	Lifeline Advance	Marvins
Insl-X Aqua Lock	Lifeline Endure	Mason's Select - Concrete Clear Sealers
Insl-X Blockout	LifeLine Exterior	Mason's Select - Epoxacryl Solid Color Concrete Stain
Insl-X Cabinet Coat	Lifeline Interior	Mason's Select - Transparent Concrete Stain
Insl-X Chlorinated Rubber Pool Paint	Lifeline Ultra-2	MasonrySaver #25 Floor Finish
Insl-X Field Marking	Lifeline Ultra-7	MasonrySaver Acrylic Waterproofing Sealer
Insl-X Hot Trax Acrylic Garage Floor Paint	Local Color Recycled Latex Paint	MasonrySaver All-Purpose HD Water Repellent
Insl-X Lead Block Encapsulating Paint	Lok-Tite	MasonrySaver Decorative Concrete Sealer
Insl-X Odor Less	Long End Seal	MasonrySaver Garage Floor Sealer
	Loop Premium Recycled Paint	MasonrySaver Paver Sealer
	Loxon	MasonrySaver VOV Compliant Solvent Base Water Repellent
	Lullaby Paints	
	Lumber Jacket Stains (all products)	
	Luxury Living	
	Mad Dog Crack Fix (MDCF)	



Registered Brands

Vermont Paint Stewardship Program as of 8/2/2017

MasonrySaver Water Repellent for Brick	Nextech (all products)	Osmo Polyx Oil Tints (multicolor)
MasonrySaver Water Repellent for Split-Face Block	Novus (all products)	Osmo Polyx Professional #5125
Masonry Shield	NuDeck	Osmo Polyx Spray Wax #3063
Masterchem	Odds N Ends	Osmo Pro Color Stains (multicolor)
MasterClear Supreme	OKON	Osmo Top Oil
Master Gel® Finish Clear	Old Masters Brushing Lacquer	Osmo UV Protection Oil
Master Guard Oil and Spot Primer	Old Masters Exterior Water-based Spar Urethane	Osmo Wood Wax Finish (multicolor)
Master Guard Sealer	Old Masters Fast Dry Stain	Ospho (rust inhibitor)
Master Guard Wood Sealer	Old Masters Gel Stain	Ox-O-Flow
Masterline	Old Masters Graining Base	Pacific (all products)
Master Painters	Old Masters H2O Wood Stain	PAF Primer
Master Touch	Old Masters Oil Based Gel Polyurethane	Paint Couture
Maxbond®	Old Masters Oil Based Polyurethane	Painter's Select
Maxflex™	Old Masters Oil Based Quick-Dry Varnish	Painter's Touch
MaxLife	Old Masters Oil Based Sending Sealer	Painters Edge
Maxwood®	Old Masters Oil Based Spar Marine Varnish	PalGard®
MBP Flat	Old Masters Oil Based Super Varnish	Pantone
McCloskey	Old Masters Penetrating Sealer	PD Stain
McCloskey Man-O-War	Old Masters Penetrating Stain	Peel-Bond
McCloskey Multi-Use	Old Masters Tung Oil Varnish	Peel-Bond
McCloskey Special Effects	Old Masters Water-based Clear Finish	Penetrating Oil Sealer
McCloskey Stains	Old Masters Water-based Polyurethane	Penofin Concrete & Masonry Stain
McCoy's	Old Masters Water-based Sanding Sealer	Penofin Wood Finishes
Messmer's Composite Deck Finish	Old Masters Wiping Stain	Perlas Velvet
Messmer's Decking Stain	Old Masters Wood Conditioner	Perma White
Metallic Finishes	Old Town Clear Finish	Permax 108 Acrylic Coating
Metallic Paint Collection	Old Town Paints Chalk Style Finish	Permax 115 Acrylic Coating
Metal Ready Universal	Old Village Paint	Permax 120 Acrylic Coating
MetalTech Gold Base	Old World Stain	Pittsburgh Paints and Stains
MetalTech Pearl Base	Ollie's Town & Country	Plastek
MetalTech Silver Base	Olympic Paint	Plastek EXT
Minwax	Olympic Stain	Plastic And Vinyl NT
ML Campbell	One Time Wood Preservative (various colors)	Plastic And Vinyl NT
Modac	Optima Formula 360	Plastic Kote
Moldex Sealant	Optimus	Plasti-Kote
Mono II	Orgill	Platinum
Mono II EXT	Osmo Clear Wood Oil #000	Platinum Products
Mothers Touch Paint	Osmo Decking Oils (multicolor)	Plexicolor (all products)
Multi-Mist Products - Pro Seal Ultra	Osmo Oil Stain (multicolor)	Ply-Mastic
Multi-Mist Products - Qurox	Osmo One Coat Only HS (multicolor)	Ply-Thane
Multiplex	Osmo Opaque Gloss Wood Stain #2104	Ply-Tile
Multispec	Osmo Polyx Oil	Poly-Soy Top Coat
Muralo Quick Tred (various colors)	Osmo Polyx Oil 'Effect' (multicolor)	Polyurethane Primer (all products)
Muralo Quick Tred Tex (various colors)		Polyurethane Rust Preventative
Muralo Specialty Coatings		PolyWhey
Murex Primer		PolyWhey Exterior (various colors)
MX Primer		PolyWhey Floor
Mythic Paint		PolyWhey MVP Sport Floor Finish
NanoKote (all products)		PolyWhey MVP Sport Floor Sealer
NatureSecret		PolyWhey Series 1000 Infusion Wood Modifier
Nautica at Home		PolyWhey Series 2000 Stain Base
		PolyWhey Series 3500 Wood Floor finish



Registered Brands

Vermont Paint Stewardship Program as of 8/2/2017

PolyWhey Series 3500 Wood Floor Sealer	ProMar 400	Richard's Paint Driveway and Floor Coating
PolyWhey Wood Cleaner	ProMar 700	Richard's Paint Eternity
Porcelain®	Pro Paint (all products)	Richard's Paint Floor-Tite
Pore-O-Pac™ Grain Filler (various colors)	Property Solution	Richard's Paint H2O Fusion
Pore-O-Pac™ Grain Filler Reducer	Pro Shopper	Richard's Paint Painter's Pride
Power Hide (all products)	Prymit®	Richard's Paint Paverseal
PPG High Performance Coatings	Puma	Richard's Paint Pliolite
PPG Maintenance Paint	Puma-XL	Richard's Paint PPS
PPG Paints	Qualalacq™ Lacquer Gloss	Richard's Paint Rich Air Zero VOC
PPG Pittsburgh Paints	Qualalacq™ Lacquer Reducer	Richard's Paint Rich Classic
PPG Porter Paints	Qualalacq™ Lacquer Satin	Richard's Paint Rich Flex
PPI™ Waterborne Finish	Qualalacq™ Sanding Sealer	Richard's Paint Rich Pro
Pratt & Lambert®	Qualarenu™ #1	Richard's Paint Rich Shield
Preference (all products)	Qualasole™	Richard's Paint Rich Tex
Prelude	Quart testers (all products)	Richard's Paint Rich Wall
Premier Aluminum Roof Coating	Quick Dry Zar Sanding Sealer (Gloss/Satin)	Richard's Paint Richwood
Fibered	Quik Hide	Richard's Paint Roof Shield
Premium	Quikrete Concrete & Masonry High Gloss Sealer	Richard's Paint Rust Shield
Premium Decor	Quikrete Concrete & Masonry Waterproofing Sealer	Richard's Paint Shields All
PrepRite	Quikrete Masonry Waterproofer	Richard's Paint Signature Ceramic
Preserva Wood	Quikrete Penetrating Concrete Stain	Richard's Paint Signature Series
Pre-Stain Clear Wood Stain	Quikrete Textured Acrylic Concrete	Richard's Paint Signature Series Plus
Prestige	Quikrete Translucent Concrete Stain	Richard's Paint Wall Guard
Primatite	Quik-Tred Floor Enamel	Rich Lux
Prime 1	Radcon (various colors)	Roman ECO-988 Pigmented Primer
Prime Choice (all products)	Rainstopper	Roman Golden Harvest PRO-988
Prime-n-Seal	Ralph Lauren	Roman PRO-909 Vinyl Prep
Primer	Ramuc	Roman PRO-935 R-35
Primer with Sand™	Rapid Roof HV	Roman PRO-977 Ultra Prime
Prime Start	Rapid Roof III	Roman Pro-999 Rx-35
Prime Start	Ready Seal (all products)	Roofers Choice
Prime Time	Ready to Spray Athletic White	Room & Board by Valspar
Prime Time Plus	Red Athletic Field Marker	Royal Conditioner™
Prime Touch (all products)	Red Devil	RPM Water Based Grain Filler (various colors)
Pro Best	Red Seal®	RPM Wood -15 Minute Wood Stain (various colors)
Proceed Decorative Paints	RedSeal® Zero VOC	RPM Wood-8x Wipe On Water Base Urethane Satin
ProClassic	Reflectit™	RPM Wood -Polyurethane Satin
Professional Coatings	Refresh	RPM Wood -Teak Oil
Professional Finishes	Reserve	RPM Wood- Vinyl Sealer
Profin:Gloss and Satin	Resilience	RPM Wood Waterborne Urethane Finish Satin
Pro Finishes	Resin & Oil Stain Finish	Rudd Acryl Fin™ Finish
Pro Good	Restore-X	Rudd Aerodry™ (various colors)
Pro Grade	Restorz	Rudd Basetoner™ (various colors)
ProGreen 200	Restorz	Rudd Catalast™ Lacquer (various colors)
Progress (all products)	Revyvit®	Rudd Chromacat™ Lacquer (various colors)
Pro-Hide® Gold	Richard's Paint Barricade	Rudd Chromawipe NVO™ Wiping Stain (various colors)
Pro-Hide® Green	Richard's Paint Bondcrete	
Pro-Hide® Silver	Richard's Paint Bungalow 47	
Pro Kote	Richard's Paint Deck Guard	
ProLine Supreme		
Pro Maintenance		
ProMar 200		



Rudd Chromawipe™ Wiping Stain (various colors)	Rudd Problend 350 VOC™ Spray/Wiping Stains (various colors)	SeaFin AquaSpar Gloss and Satin
Rudd Colorplex™ Lacquer (various colors)	Rudd Problend TC™ Spray/Wiping Stains (various colors)	SeaFin Filler/Stain
Rudd Colorplex™ Undercoaters (various colors)	Rudd Problend™ Spray/Wiping Stains (various colors)	SeaFin Ship n'Shore Sealer
Rudd Colortools™ LH Spray Stain (various colors)	Rudd Pro-Hibuild™ Lacquer	SeaFin Super Spar Varnish
Rudd Colortools™ Wiping Stain (various colors)	Rudd Pro-Hibuild™ Sealer	SeaFin Teak Oil
Rudd Duracat-V 550 VOC Lacquer	Rudd Pro-Hibuild™ Undercoater (various colors)	Seal-Krete Clear-Seal
Rudd Duracat-V 550 VOC Sealer	Rudd Prothane™	Seal-Krete Clear-Seal High Gloss Sealer
Rudd Duracat-V Plus™ Lacquer	Rudd Pro™ Lacquer	Seal-Krete Clear-Seal Low Gloss Sealer
Rudd Duracat-V™ Lacquer (various colors)	Rudd Pro™ Sealer	Seal-Krete Clear-Seal Premium High Gloss Sealer
Rudd Duracat-V™ Sealer (various colors)	Rudd Quickstack™ (various colors)	Seal-Krete Clear-Seal Premium High Gloss Sealer Low VOC
Rudd Durafill™ Wood Filler	Rudd Terraset™ Stain Concentrates (various colors)	Seal-Krete Clear-Seal Satin Sealer
Rudd Duralac™ Lacquers (various colors)	Rusticide (rust remover)	Seal-Krete Concrete Colors Low Lustre Sealer
Rudd Excelite™ Lacquer (various colors)	Rust-O-Lastic	Seal-Krete Concrete Colors Low Lustre Sealer
Rudd Fastwipe™ Wiping Stain (various colors)	Rust Oleum	Seal-Krete Concrete Colors Semi- Transparent Stain
Rudd Glaze Stain	Rust-Stop (all products)	Seal-Krete Concrete Colors Semi- Transparent Stain #300 Tint Base
Rudd Hi-build™ Fast Dry Finish	SafeChoice	Seal-Krete Concrete Colors Semi- Transparent Stain #310 Terra Cotta
Rudd Hycryl™ Waterborne Finish	Safecoat	Seal-Krete Concrete Colors Semi- Transparent Stain #320 Brownstone
Rudd Hycryl™ Waterborne Sealer	Safecoat Naturals	Seal-Krete DampLock Concrete Waterproofing Paint
Rudd Hyplex™ Lacquer (various colors)	Sahara Clear Acrylic Sealer	Seal-Krete Epoxy-Seal Concrete Paint
Rudd ISC™ Stains (various colors)	Saman hybrid based varnish	Seal-Krete Epoxy-Seal Concrete Paint #920 White Base
Rudd ISS LHT™ Spray Stains (various colors)	Saman hybrid stain	Seal-Krete Epoxy-Seal Concrete Paint #921 Armor Gray
Rudd ISS™ Spray Stains (various colors)	Saman water based stain	Seal-Krete Epoxy-Seal Concrete Paint #922 Slate Gray
Rudd IWS™ Wiping Stains (various colors)	Saman water based varnish	Seal-Krete Epoxy-Seal Concrete Paint #940 Deep Base
Rudd Natuseal™ Stains (various colors)	Sand Finish	Seal-Krete Epoxy-Seal Low VOC Paint
Rudd Nulustre™ Lacquer	Sansin Boracol 20-2	Seal-Krete Epoxy-Seal Low VOC Paint #960 White Base
Rudd Nu-wave™ Lacquer (various colors)	Sansin Classic	Seal-Krete Epoxy-Seal Low VOC Paint #961 Armor Gray
Rudd Nu-wave™ Sealers (various colors)	Sansin DEC	Seal-Krete Epoxy-Seal Low VOC Paint #962 Slate Gray
Rudd Nu-wave™ Stains (various colors)	Sansin ENS	Seal-Krete Epoxy-Seal Low VOC Paint #970 Deep Base
Rudd On-site™ Lacquer	Sansin Foundation RTU	Seal-Krete Floor-Tex
Rudd Plastiprime™ (various colors)	Sansin MDF Primer	
Rudd Primer Undercoater (various colors)	Sansin Precision Coat	
Rudd Prism™ Waterborne Stains (various colors)	Sansin Purity Interior	
	Sansin Roof Tec	
	Sansin SDF	
	Sansin Timber Tec	
	Sapphire Metallic	
	Sashco Capture® Log Stain	
	Sashco Cascade® Clear Coat	
	Sashco Symphony® Interior Clear Coat	
	Sashco Transformation Stain® Deck & Fence	
	Sashco Transformation Stain® Log and Timber	
	Sashco Transformation Stain® Siding & Trim	
	Satin Thane Finish	
	Satin Varnish	



Registered Brands

Vermont Paint Stewardship Program as of 8/2/2017

Seal-Krete Floor-Tex Non-Slip Textured Coating	Seal-Krete Heavy Duty Waterproofer	Sikagard® Elastic Base Coat Textured
Seal-Krete Floor-Tex Tintable #440 White Base	Seal-Krete Lock-Down Epoxy Bonding Floor Primer	Sikkens Proluxe
Seal-Krete Floor-Tex Tintable #450 Deep Base	Seal-Krete Lock-Down Epoxy Bonding Floor Primer	Silox Seal "A" Side
Seal-Krete Floor-Tex Tintable Low VOC #460 White Base	Seal-Krete Multi-Surface Water Repellent	Silver Glow Brands
Seal-Krete Floor-Tex Tintable Low VOC #470 Deep Base	Seal-Krete Multi-Surface Water Repellent	Simply Glaze
Seal-Krete Floor-Tex Topcoat	Seal-Krete Original Waterproofing Sealer	Skd Grip (all products)
Seal-Krete GraniteFX	Seal-Krete Original Waterproofing Sealer	Skim Stone
Seal-Krete GraniteFX Brush & Roll Decorative Concrete Coating - Gulfshore	Seal-Krete Stucco Guard	SkimStone® Protective Sealer
Seal-Krete GraniteFX Brush & Roll Decorative Concrete Coating - Keystone	Seal-Krete Stucco Guard	SkimStone® Select Finish
Seal-Krete GraniteFX Brush & Roll Decorative Concrete Coating - Monterey	Seal-Once - Composite Decking	Skylight
Seal-Krete GraniteFX Brush & Roll Decorative Concrete Coating - Sedona	Seal-Once - Concrete/Masonry	Skylight®
Seal-Krete GraniteFX Professional Grade Decorative Natural Stone Finish - DesertStone	Seal-Once - Exotic Wood Protection	Snow Roof
Seal-Krete GraniteFX Uniforming Primer - Gray	Seal-Once - Marine Concrete/Masonry	Solar Guard
Seal-Krete GraniteFX Uniforming Primer - Tan	Seal-Once Marine - Multi Surface Concentrate	Solar-Lux™ Stain (various colors)
Seal-Krete GraniTex	Seal-Once - Marine Wood	Solar-Lux™ Waterborne Dye Stain (various colors)
Seal-Krete GraniTex Decorative Natural Stone Contractor Kit - DesertStone	Seal-Once - Multi Surface Concentrate	Solar-Lux™ Waterborne Glaze (various colors)
Seal-Krete GraniTex Decorative Natural Stone Contractor Kit - EarthStone	Seal-Once - Total Wood Protection	Solar-Lux™ Waterborne Wiping Stains (various colors)
Seal-Krete GraniTex Decorative Natural Stone Contractor Kit - GrayStone	Sears	Solastic
Seal-Krete GraniTex Decorative Natural Stone Contractor Kit - SandStone	Sea Shore	Solo 100% Acrylic
Seal-Krete GraniTex Decorative Natural Stone Finish - DesertStone	Severe Weather Contractor Finish	SoyCrete Architectural Concret Stain
Seal-Krete GraniTex Decorative Natural Stone Finish - EarthStone	Shading/Glazing Stain (various colors)	Spar Restoration Varnish
Seal-Krete GraniTex Decorative Natural Stone Finish - GrayStone	Shake Shield	Spraytek I
Seal-Krete GraniTex Decorative Natural Stone Finish - SandStone	SharkTooth Undercoat	Spraytek II
Seal-Krete Heavy Duty Waterproofer	Sheetrock® brand Ceiling Texture Paint	Spraytek III
	Sheetrock® brand First Coat Primer	Stainless Steel Coating
	Sheetrock® brand TUFF-HIDE Primer-Surfacer	STAINShield®
	SHEETROCK PRIMR FIRSTCOAT	Sta-Kool
	Sheffield Durex	Start Right
	Sheffield Gold Leaf Finish	StoCoat Acryl
	Sher-Crete	StoCoat Acryl Plus
	SherStripe	StoCoat Color
	Sherwin-Williams	StoCoat Color Sand
	Shimmer Stone	StoCoat DTM Acrylic
	Shizen	StoCoat DTM Metal-Primer
	Show Kote	StoCoat Lotusan
	Shur-Stik	StoCoat Lotusan Low VOC
	Signature Select	StoCoat Metallic
	Sikagard® 510	StoCoat Texture Coarse
	Sikagard® 550W Elastocolor	StoCoat Texture Fine
	Sikagard® 552W Primer	StoCoat Texture Medium
	Sikagard® 570	Sto Hot Prime
	Sikagard® Elastic Base Coat Smooth	Stolastic Sand
		Stolastic Smooth
		Stone & Masonry Conditioner
		Stone Mason
		Stone Mason Ultra Gloss Water Based
		Stonite (all products)
		Sto Primer Creativ
		Sto Primer Sand



Sto Primer Smooth	Sydney Harbour Liquid Copper & Patina Green	TriCoPolymer-Floor-Seal
Stop Rust	Sydney Harbour Liquid Iron & Instant Rust	TriCoPolymer-Kennel-Seal
Stopz Primer Finish	Sydney Harbour Liquid Tin	TriCoPolymer-Lumber-Seal
Stopz Waterproofing Paint	Sydney Harbour Low Sheen Acrylic	TriCoPolymer-Mastic-Seal
Storm Systems (all products)	Sydney Harbour Matt Wall Sealer	TriCoPolymer-Paint-Seal
StoSilco Lastic	Sydney Harbour Original Lime Wash	Trim Magic
StoTique	Sydney Harbour Palm Beach Black	Trim Magic
Structures Wood Care NatureColor®	Sydney Harbour Ultra Flat Acrylic	Tru Seal
Structures Wood Care NatureOne®	Sydney Harbour Wood Wash	Tuf-On (all products)
Stucco, Masonry & Brick Paint	Synteko	Tuscan Glaze™
Sunnyside Waterproofer	Tack Coat	Twist & Try
Sunnyside Wood Protectant	Temproof 1200 Stove paint	Two Minute Repair Liquid
SuperBond	Terminator™	TWP Mildew Sealer
Superdeck - Clear Wood Finish	Tex Cote	UGL Pro Finish (all Gloss Levels)
Superdeck - Deck & Dock Elastomeric	TexPrime Textured Drywall Sealer	Ultimate House Paint (all products)
Superdeck - Exotic Hardwood Stain	Texturecoat	Ultra (all products)
Superdeck - Log Home Oil Finish	Texture Effects	UltraCrete
Superdeck - Pressure Treated Stain	Texture Paint	Ultra Deluxe
Superdeck - Semi Transparent Stain	The Freshaire Choice	Ultra-Fill
Superdeck - Solid Color Stain	Theme Paint	Ultra Guard
Superdeck - Transparent Stain	The Paint Drop™	Ultraplate (all products)
Superdeck - Waterborne Stain	Thompsons	Ultra-Tred Epoxy (all products)
Superfinish (all products)	Tile Guard	Ultra XT
SuperPaint	TileLab Gloss Sealer & Finish	Ultra Zar Plus (Gloss/Satin)
Super Scrub (all products)	TileLab Matte Sealer & Finish	Undercoat
Super-Tred Industrial Enamel (all products)	TileLab Sealer/Cleaner/Resealer Combo Pack	Uniflex
Sure Shine	TileLab Stone Enhancer	Universal Stain Killing Primer
Surmax	TileLab SurfaceGard	Ura-Floor Gloss WB Urethane
Sutherland Welles Ltd. Marine Spar Varnish	Timberflex	Urban Paint Metal (various colors)
Sutherland Welles Ltd. Murdoch's Line 500 Floor Finish	Timberflex II	USG™ Plaster Bonder
Sutherland Welles Ltd. Murdoch's Line Hard Oil	Timberflex Pro	USG™ Plaster Sealer
Sutherland Welles Ltd. Murdoch's Line Hard Sealer	Timber Pro UV Crystal Urethane	UV Plus
Sutherland Welles Ltd. Murdoch's Line Table Top	Timber Pro UV Deck & Fence Formula	UV Plus for Hardwoods
Sutherland Welles Ltd. Wiping Varnish (Sealer, Low, Medium, High Lustre)	Timber Pro UV Internal Concrete Sealer	Valspar
Sydney Harbour Alchemy Liquid Gold	Timber Pro UV Internal Wood Stabilizer	Valspar Anti-Rust
Sydney Harbour Clearcoat	Timber Pro UV Log & Siding Formula	Valspar Climate Zone
Sydney Harbour Duchess Satin	Timber Pro UV Masonry Top Sealer	Valspar Color Style
Sydney Harbour Eggshell Acrylic	TimberSoy Penetrating Natural Wood Stain	Valspar Decorator
Sydney Harbour Industrial Lustre	Tite Waterproofing Paint	Valspar Duramax
Sydney Harbour Instant Rust Clear Sealer	Top Choice	Valspar Elan
Sydney Harbour Interno Lime Wash	Tribuilt Roof X Tender	Valspar Elan
Sydney Harbour Limeproof Undercoat Sealer	TriCoPolymer-Block-Seal	Valspar Integrity
	TriCoPolymer-Cedar-Seal	Valspar Medallion
	TriCoPolymer-Conkcrete-Seal	Valspar Medallion Primers
	TriCoPolymer-Crawlspace-Seal	Valspar Prep-Step Primers
	TriCoPolymer-Farm-Seal	Valspar Pro 2000 Interior Contractor Finish
	TriCoPolymer-Fence-Seal	Valspar Professional
		Valspar Professional Bonding Primer
		Valspar Professional Exterior
		Valspar Professional Exterior Primer
		Valspar Professional Interior
		Valspar Professional New Construction Primer
		Valspar Professional PVA Primer



Registered Brands

Vermont Paint Stewardship Program as of 8/2/2017

Valspar Restoration Series	Wood Iron Generations Water-Based Stain
Valspar Signature Colors	Wood Iron Top Coat Finish
Valspar Tractor & Implement	Woodpride
Valspar Ultra	WoodScapes
Valspar Ultra Premium	Wood Shield
Valspar Weathercoat	Woodsman
Value	Woodtone Series (various colors)
Vanex (brands are included in PPG Brands)	Woodturners Finish
Van Sickle Barn and Outbuilding Paints	X-200 Primer (all products)
Van Sickle Exterior Latex (Economy, Premium or Super Premium)	XL70
Van Sickle Exterior Stains	X-O Rust
Van Sickle Floor Enamel	X-Out Plus
Van Sickle Interior Latex (Economy, Premium or Super Premium)	X-Out Plus
Van Sickle Multi Purpose Enamel	X-Seal
Varathane	X-Seal
Vogue Deep Colors	Yellow Athletic Field Marker
Vogue from Muralo Deep Color finishes	Yenkin Majestic Start To Finish
Wall Kote	Yolo Colorhouse
Wall Paint	ZAP Primers
Wall-Up	Zar Classic (all Gloss Levels)
Walmart	Zar Clear Wood Sealer
Watco	Zar Clear Wood Sealer Toner Base
Waterlox 350 VOC Satin Finish	Zar Deck&Siding Stains Solid and Semi-Transparent (all colors)
Waterlox 350 VOC Sealer/Finish	Zar Exterior Polyurethane (Gloss/Satin)
Waterlox 450 VOC Satin Finish	Zar Exterior Water Base Polyurethane (Gloss/Satin)
Waterlox Original High Gloss Finish	Zar Interior Polyurethane (all Gloss Levels)
Waterlox Original Satin Finish	Zar Ultra Exterior Polyurethane (all gloss Levels)
Waterlox Original Sealer/Finish	Zar Ultra Interior Polyurethane (all Gloss Levels)
Waterlox XL88 Gloss Urethane	Zar Ultra Max OMU (all gloss Levels)
Waterlox XL89 Satin Urethane	Zar Ultra Max Rejuvenator
Wear-All (all products)	Zar Ultra Max Sanding Sealer
Weather All	Zar Ultra Max Wipe On
Weathercoat TM	Zar Ultra Max Wood Stains (all colors)
Weatherlastic®	Zar Wood Stains (all colors)
Weatherplate (all products)	Zehrunge
Weatherprime®	Zero Gloss Varnish
Weathershield	Zinsser
Wet Wood Stain	Zone Marking Paints
White Athletic Field Marker	
White Pickling Stain	
Wipe on Zar (Semi Gloss/Satin)	
WithSTAND®	
Wolman	
Wonder Guard	
Wood Classics	
Wood Iron Deck, Fence & Siding Stain	
Wood Iron Doors & More Finish	
Wood Iron Exterior Oil Finish	

Appendix C

Program Products Definition and Sample Notices

IDENTIFYING ARCHITECTURAL PAINT PRODUCTS UNDER PAINTCARE For Manufacturers and Collection Sites

Architectural paint is defined under the Paint Stewardship Program as:

Interior and exterior architectural coatings sold in containers of five gallons or less.

Architectural paint does not include:

Industrial maintenance (IM), original equipment manufacturer (OEM) or specialty coatings.

In order to distinguish between what is an architectural coating under the Paintcare program, definitions and terminology from the U.S. Environmental Protection Agency, California Air Resources Board and other state and local Architectural and Industrial Maintenance (AIM) rules were used to develop the following list. The decision table page 2 uses the definitions on page 3.

Program Products (maximum container size of 5 gallons):

1. Water-based paint (Interior and exterior): latex, acrylic
2. Oil-Based paint (Interior and exterior): alkyd, enamel
3. Clear Coatings: Shellac, Lacquer, Varnish, Urethane
4. Deck coatings and floor paints (including elastomeric)
5. Field and lawn marking coatings
6. Melamine/metal coatings and rust preventative
7. Primers and undercoaters
8. Sealers
9. Stains
10. Water repellents (not-tar-based or bitumen-based)
11. Waterproofing sealers for concrete, masonry, and wood

Non-Program Products (regardless of container size):

1. Empty, leaking or unlabeled containers
2. Industrial Maintenance (IM) coatings labeled as:
(a) For Industrial Use Only, (b) For Professional Use Only, (c) Not for Residential Use
3. Original Equipment Manufacturer (OEM) (shop application) paints and finishes
4. Aerosol paint (spray cans)
5. Automotive paints
6. Marine paints
7. Arts and Crafts paints
8. Caulking compounds, epoxies, glues or adhesives
9. Drywall / joint compounds
10. Semi-solid products: spackle, patching compounds for roofing, stucco, wood, etc.
11. Paint additives, colorants and tints
12. Resins
13. Paint thinner, solvents, mineral spirits
14. Wood preservatives containing pesticides
15. Tar, asphalt or bitumen based products
16. Two-component coatings (epoxy)
17. Deck cleaners
18. Other non-coating products (motor oil, pesticides, cleaning solutions)

Decision Table for Identifying Architectural Paint Products for Manufacturers and Collection Sites

1. Is it a coating?

If YES, go to 2.	If NO, it is not in the program.	Manufacturers: Non-coatings are not assessed.
	<u>These non-coatings are excluded:</u> <div style="display: flex; justify-content: space-between;"> <div> Paint thinner Wood preservatives Drywall compounds Roof patch, stucco patch Caulking compounds Adhesives </div> <div> Solvents Mineral spirits Deck cleaners Epoxies, glues Wood patch </div> </div>	Collection Sites: Non-coatings are not acceptable.

2. Is it an architectural coating?

If YES, go to 3.	If NO, it is not in the program.	Manufacturers: Coatings that are not architectural are not assessed a fee.
	<u>These are not architectural:</u> <div style="display: flex; justify-content: space-between;"> <div> Auto paint Furniture oils* </div> <div> Marine paint </div> <div> Aerosols </div> </div>	Collection Sites: Coatings that are not architectural are not acceptable.

3. Is it an industrial maintenance (IM) coating?

If NO, go to 4	If YES, it is not in the program.	Manufacturers: IM coatings are not assessed.
	<u>Products with these labels are excluded:</u> <div style="display: flex; justify-content: space-between;"> <div> Professional use only For industrial use only </div> <div> Not for residential use </div> </div>	Collection Sites: IM coatings are not acceptable.

4. Is it for Original Equipment Manufacturing (OEM)?

If NO, go to 5	If YES, it is not in the program.	Collection Sites: A collection site may not always be able to distinguish these products from non-OEM products. This determination will be made by asking the business customer what the intended use of the paint was. If the intention was shop application, it is not a program product. However, if the coating was sold to a consumer or contractor for other than shop application and/or the use cannot be distinguished by the method of sale, it may be accepted as a program product.
	Manufacturers: If a company can clearly document that the coating was sold exclusively for OEM use, the fee should not be assessed. However, if this coating can be sold to a consumer or contractor for other than shop application and/or the use cannot be distinguished by the method of sale, the fee should be assessed.	

5. Is it a specialty coating or specifically excluded?

If NO, it is in the program	If YES, it is not in the program.	Manufacturers: Excluded products are not assessed a fee.
	<u>These are excluded:</u> Products in containers larger than 5 gallons Aerosol (spray) cans Craft paints Two component coatings (epoxy) Tar, asphalt, bitumen-based coatings Resins Paint tints, colorants, additives Wood preservatives containing pesticides	Collection Sites: Excluded products are not acceptable at collection sites.

* Wood oils labeled for use on furniture only are excluded; those labeled for use on stationary structures and/or their appurtenances are included and described in Product Notice #7. See page 4 for list of PaintCare Product Notices published as of 9/15/20.

DEFINITIONS

I. Architectural Coatings

Architectural coating means a coating recommended for application to stationary structures and their appurtenances, portable buildings, pavements, curbs, fields and lawns. This definition excludes adhesives, aerosols and coatings recommended by the manufacturer or importer solely for shop applications or solely for application to non-stationary structures, such as airplanes, ships, boats, and railcars.

II. Industrial Maintenance Coatings

Industrial Maintenance (IM) coating means a high performance architectural coating, including primers, sealers, undercoaters, intermediate coats, and topcoats formulated and recommended for application to substrates exposed to one or more of the following extreme environmental conditions in an industrial, commercial, or institutional setting:

1. Immersion in water, wastewater, or chemical solutions (aqueous and non-aqueous solutions), or chronic exposure of interior surfaces to moisture condensation;
2. Acute or chronic exposure to corrosive, caustic, or acidic agents, or to chemicals, chemical fumes, or chemical mixtures or solutions;
3. Repeated exposure to temperatures above 120 °C (250 °F);
4. Repeated (frequent) heavy abrasion, including mechanical wear and repeated (frequent) scrubbing with industrial solvents, cleansers, or scouring agents; or
5. Exterior exposure of metal structures and structural components.

One of the primary ways AIM rules distinguish IM coatings from other architectural coatings is the manufacturer's recommendation for restricted usage. IM coatings must be labeled under the rules as:

1. "For industrial use only."
2. "For professional use only."
3. "Not for residential use" or "Not intended for residential use."

Thus, if the product is not intended for and not labeled as an IM coating, it should be deemed a

covered architectural coating and the fee should be assessed, unless it is specifically excluded (see below).

III. Original Equipment Manufacturer (OEM) Coatings

Shop application means that a coating is applied to a product or a component of a product in a factory, shop, or other structure as part of a manufacturing, production, finishing or repairing process (e.g., original equipment manufacturing coatings).

Since OEM (shop application) coatings may be intended but not labeled for industrial or professional use, and may be sold in containers of 5 gallons or less, then...

For manufacturers:

...if a company can clearly document that the coating was sold exclusively for OEM use, the fee should not be assessed. However, if this coating can be sold to a consumer or contractor for other than shop application and/or the use cannot be distinguished via the method of sale, the fee should be assessed.

For collection sites:

...a collection site may not always be able to distinguish these products from non-OEM products. This determination will be made by asking the business customer what the intended use of the paint was. If the intention was shop application, it is not a program product. However, if the coating was sold to a consumer or contractor for other than shop application and/or the use cannot be distinguished via the method of sale, it may be accepted as a program product.

IV. Specialty Coatings

Lastly, in order to identify Specialty or Special Purpose Coatings, we have used the definition from the Federated Society of Coating Technology's Coatings Encyclopedic (since AIM rules don't have a definition), which states that these coatings include crafts paints.

PRODUCT NOTICES

As needed, PaintCare reviews products and publishes notices to clarify whether certain products should be covered by the program. These reviews of an individual product or product categories are conducted by gathering information from manufacturers about the chemistry and use of the products, and by consulting with technical staff and legal counsel who are familiar with the chemistry, use, and regulations of program products.

Product Notices are posted on PaintCare's website at <https://www.paintcare.org/manufacturers/#/product-notices>. Any new or revised notices will be posted on the website.

Product Notice	Topic	Date
1	Drywall Primer Surfacers	June 2012
2	Exterior Insulation Finish Systems	May 2014
3	Masonry and Concrete Sealers Labeled "For Professional Use Only"	January 2013
4	Pool, Floor & Roof Coatings Labeled "For Professional Use Only"	June 2013
5	Shop Application and OEM	May 2014
6	Out-of-State Paint Sales	July 2014
7	Furniture Polishes, Waxes and Oils	October 2015 Updated September 2020



Masonry and Concrete Sealers labeled “For Professional Use Only”

Purpose

The purpose of this notice is to clarify that masonry and concrete sealers that are labeled “for professional use” are excluded from the PaintCare Program. Manufacturers of these products are not required to register with PaintCare and they are not required to collect and remit the Assessment (“PaintCare Recovery Fee”) in California or Oregon, the two states with active Paint Stewardship programs implemented by PaintCare.

Background

In order to assist companies with determining what products are architectural coatings subject to the PaintCare Recovery Fee for the Oregon and California programs and what products are not, PaintCare developed a definition of architectural paint detailing what factors should be taken into consideration when making these determinations. In addition, the definition lists examples of program products and examples of non-program products (products that should not be assessed the fee). PaintCare relies on individual manufacturers to determine which, if any, of their products are part of the program. In some cases, PaintCare helps with this determination based on individual calls with manufacturers. In the case of products used as sealers for masonry and concrete — and based on inquiries from many industry representatives and manufacturers of these products — it has come to our attention that manufacturers of these sealers desire clarification on whether their products are considered architectural coatings for the purposes of active and future state PaintCare programs.

In order to ensure that all manufacturers are on a level playing field and the PaintCare Recovery Fee is placed on all program products subject to the assessment, PaintCare herein clarifies that masonry and concrete sealers labeled for professional use are not considered program products and the PaintCare Recovery Fee is not required to be assessed and remitted by manufacturers of these products. Excluding these products from the definition of architectural coatings is based on the following:

- Originally PaintCare’s definition excluded products that are both (1) Industrial Maintenance Coatings and (2) labeled “for professional use only.” [Other acceptable phrases are (a) for industrial use only, (b) not for residential use, and (c) not intended for residential use].
- The definition of an IM coating varies somewhat from one state to another and from one regulatory air district to another. Generally, determining if a coating meets the criteria for IM is

based on the manufacturers recommended use for the product and whether it meets any one of certain criteria (simply put these criteria are: regular exposure to heat, chemicals, moisture, or abrasion). Masonry sealers are intended to act as waterproofing agents and are applied where water exposure is anticipated. Thus as a category they can generally be considered by manufacturers to be IM coatings and therefore meet the first criteria.

- Some manufacturers label these products for professional use. Others do not label them for professional use. There is no prohibition on a manufacturer from labeling a product for professional use. Therefore if a manufacturer chooses to change the product label on a product that they consider IM in order to also comply with the second criteria above (in the first bullet), they may do so in order have these products excluded from the PaintCare Program. The manufacturer may change their regular container label or use an additional sticker.
- If PaintCare finds that manufacturers start to change their labels on other products that are clearly not for professional use or industrial maintenance coatings (e.g. house paint), the professional use labeling will not exclude such products.
- An important purpose of the paint stewardship programs is to collect and recycle unused paint, stains, and coatings that are normally managed through government-sponsored household hazardous waste (HHW) programs. Sealers for masonry and concrete are not known to be a problem at HHW programs.

Conclusion

Concrete and masonry sealers that are IM coatings and labeled for professional use using one of the phrases indicated above are categorically exempt from PaintCare.

More Information

For more information about the PaintCare Program and the responsibilities of manufacturers, please visit PaintCare.org or contact:

Paul Fresina
Senior Director of Communication and Operations
pfresina@paint.org
(415) 606-3211

Marjaneh Zarrehparvar
Executive Director
mzarrehparvar@paint.org
(202) 462-8549

PaintCare Inc.
1500 Rhode Island Avenue NW
Washington, DC 20005
info@paintcare.org
(855) 724-6809
www.paintcare.org



Furniture Polishes, Waxes, and Oils

Purpose

The purpose of this notice is to clarify that furniture polishes, waxes, and oils, such as linseed, tung, and lemon oil, that are labeled for use solely on furniture (or other items that are not stationary structures or their appurtenances) are excluded from the PaintCare program. Manufacturers of these products are not required to register them with PaintCare and are not required to collect and remit the assessment (PaintCare fee) in states with paint stewardship programs operated by PaintCare.

Background

Furniture polishes, waxes, and oils are used to clean, condition, and protect wood. These products are not considered architectural coatings if they are labeled to be used only on furniture.

The definition of architectural coatings excludes coatings recommended solely for application to items that are not stationary structures or their appurtenances (e.g., railings, cabinets, etc.); therefore, if a polish, wax, or oil is labeled for use only on furniture, it is excluded from the PaintCare program.

The claims or statements of potential use on a product determine whether the product is architectural and consequently, is a PaintCare program product. When the label indicates that a product is designed for use on architectural surfaces (including but not limited to doors, window trim, wood paneling, and other wood trim), the product is an architectural coating. In such cases, products are part of the PaintCare program. Such products should be registered, and the PaintCare fee should be applied to them.

It is common for a product label to make claims or statements of multiple potential uses. When a product label indicates that it was designed for use on *both* furniture and architectural surfaces, it is an architectural coating.

Labeled Use	Covered by PaintCare
Furniture Only	No
Architectural Only	Yes
Both Furniture and Architectural	Yes

Conclusion

Polishes, waxes, and oils, such as linseed, tung, and lemon oil that are labeled only for use on furniture are excluded from the PaintCare program and, therefore, fees should not be applied.

More Information

For more information about the PaintCare program and the responsibilities of manufacturers, please visit paintcare.org or contact:

Taujuana Davis
Registration Coordinator for Manufacturers
tdavis@paint.org
(202) 232-2733

PaintCare
901 New York Ave NW Suite 300 West
Washington, DC 20001
www.paintcare.org

Appendix D

Outreach Materials



Information for HHW Programs

UPDATED — OCTOBER 2016

Vermont's paint stewardship law benefits Household Hazardous Waste Programs.

A law passed in June 2013 requires paint manufacturers to establish a Paint Stewardship Program in Vermont. Municipal Household Hazardous Waste (HHW) Programs that participate can save money on paint management costs. Program funding comes from a fee on the sale of architectural paint sold in Vermont. The program began in May 2014.

Paint Stewardship Program in Vermont

PaintCare Inc. is a nonprofit 501(c)(3) organization established by the American Coatings Association to implement state-mandated paint stewardship programs on behalf of paint manufacturers in each state that adopts a paint stewardship law.

Vermont is the sixth state to pass such a law. Although the program is required by state law, it is designed and operated by the paint manufacturing industry. PaintCare currently operates programs in California, Colorado, Connecticut, District of Columbia, Maine, Minnesota, Oregon, Rhode Island, and Vermont.

Making Paint Recycling More Convenient

PaintCare has established drop-off sites statewide for households and businesses to take leftover architectural paint. Although most drop-off sites will be at paint retailers, HHW programs and waste transfer stations may also volunteer to be PaintCare drop-off sites and have their paint transportation and recycling/disposal costs paid by PaintCare. Facilities that would like to become a drop-off site can fill out the Interest Form available in the Waste Facilities section of www.paintcare.org/vt.

Benefits to HHW Programs

- ◆ Make recycling of leftover paint more convenient
- ◆ Save on transportation and recycling/disposal
- ◆ Conserve resources and keep paint out of the solid waste stream
- ◆ Allow households to bring paint with other HHW in one trip to one site

PaintCare Partners Receive

- ◆ Collection bins
- ◆ Transportation and recycling/disposal services
- ◆ Staff training at your site
- ◆ Program guidelines
- ◆ Free publicity of HHW site or event (optional)

Drop-off Site Responsibilities

- ◆ Provide secure storage area for cubic yard boxes or drums
- ◆ Accept PaintCare products from the public during normal operating hours
- ◆ Properly pack PaintCare products in collection bins
- ◆ Assist with loading and unloading of full and empty storage bins
- ◆ Complete paperwork related to tracking outgoing paint shipments
- ◆ Ensure staff are trained in PaintCare program guidelines and operating procedures



Does PaintCare Require Operational Changes?

If your program does not currently accept latex paint, PaintCare will not require you to do so.

If you wish to start accepting latex paint, PaintCare will cover the transportation and recycling costs.

- ◆ If your program does not currently accept paint from businesses, PaintCare will not require you to do so. If you wish to start accepting paint from businesses, PaintCare will cover the transportation and recycling costs.
- ◆ PaintCare selects its own transporter(s) to pick up paint from all PaintCare sites in the state.
- ◆ If your current hazardous waste transporter is not the same company, a different hauler (PaintCare's hauler) will transport paint from your program.

Water-Based (Latex) Paint is a Resource

An important goal of PaintCare is to conserve resources and increase the volume of paint that is recycled. Not all HHW programs accept water-based paint because it is expensive to manage and not classified as hazardous. Households and businesses are often instructed to let water-based paint dry out and dispose of the dry paint in the trash. Through the PaintCare program, all paint including latex is treated as a resource and recycled to the maximum extent possible.

Contact

John Hurd
Program Manager (Maine and Vermont)
(802) 245-4821
jhurd@paint.org

What Products Are Covered?

The products accepted at PaintCare drop-off sites are the same products that have a fee when they are sold.

PaintCare Products include interior and exterior architectural coatings sold in containers of five gallons or less. However, they do not include aerosol products (spray cans), industrial maintenance (IM), original equipment manufacturer (OEM), or specialty coatings.

PaintCare Products

- ◆ Interior and exterior architectural paints: latex, acrylic, water-based, alkyd, oil-based, enamel (including textured coatings)
- ◆ Deck coatings, floor paints (including elastomeric)
- ◆ Primers, sealers, undercoaters
- ◆ Stains
- ◆ Shellacs, lacquers, varnishes, urethanes (single component)
- ◆ Waterproofing concrete/masonry/wood sealers and repellents (not tar or bitumen-based)
- ◆ Metal coatings, rust preventatives
- ◆ Field and lawn paints

Non-Paintcare Products

- ◆ Paint thinners, mineral spirits, solvents
- ◆ Aerosol paints (spray cans)
- ◆ Auto and marine paints
- ◆ Art and craft paints
- ◆ Caulking compounds, epoxies, glues, adhesives
- ◆ Paint additives, colorants, tints, resins
- ◆ Wood preservatives (containing pesticides)
- ◆ Roof patch and repair
- ◆ Asphalt, tar, and bitumen-based products
- ◆ 2-component coatings
- ◆ Deck cleaners
- ◆ Traffic and road marking paints
- ◆ Industrial Maintenance (IM) coatings
- ◆ Original Equipment Manufacturer (OEM) (shop application) paints and finishes



How Does the Vermont Paint Stewardship Program Affect Paint Retailers?

UPDATED — OCTOBER 2016

Paint Stewardship Programs in the United States

For several years the American Coatings Association (ACA) has worked with stakeholders interested in the management of leftover paint. This work has led to development of an industry-led paint stewardship program for the United States.

PaintCare Inc. is a nonprofit organization established by ACA to implement this program on behalf of paint manufacturers in each “PaintCare State” (those that adopt paint stewardship laws). PaintCare currently operates in California, Colorado, Connecticut, District of Columbia, Maine, Minnesota, Oregon, Rhode Island and Vermont.

Starting in May 2014, Vermont paint retailers were required to add a fee to the architectural paint products they sell, make sure they are not selling unregistered brands, and provide customers with information about the program. Serving as a drop-off site is optional.

Convenient Paint Recycling

PaintCare’s major effort is to establish paint drop-off sites throughout each PaintCare State — at paint retailers and other locations — in order to provide convenient recycling opportunities for the public. Other locations include waste transfer stations and municipal household hazardous waste facilities and events. There are more than 1,700 paint drop-off sites in eight states and the District of Columbia; more than 70 of these sites are in Vermont.

Participation as a Drop-Off Site is Voluntary

Most retailers who wish to serve as drop-off sites are able to do so if they have space and can provide minimal staff time to accept paint from the public. By taking part in the program, retailers increase foot traffic and sales, and they provide an environmentally-beneficial service to their community. They make recycling of leftover paint convenient for their customers and help relieve local governments of some of the responsibility for managing leftover paint. PaintCare provides storage bins, site training, and support; promotes the sites to the local community; and pays for paint transportation and recycling.

REQUIREMENTS OF RETAILERS

1. Check Registered Manufacturers & Brands

Retailers may not sell architectural paints in Vermont that are not registered. Paint manufacturers must register their company with PaintCare, and they must register all architectural paint brands they sell in the state. PaintCare publishes lists of registered brands and manufacturers on its website so retailers can check to make sure that the products they sell are registered. Please visit www.paintcare.org for registration lists.



2. Pass on the Assessment Fee

State law requires that a stewardship fee be applied by manufacturers to the wholesale price of architectural paint sold in Vermont. This fee pays for all aspects of running the program. The fee is paid by manufacturers to PaintCare and then passed to their dealers. Retailers will see the PaintCare Fee on invoices from suppliers starting on the first day of the program. The law also requires that retailers and distributors add the fee to the purchase price of architectural paint. The fee paid by the customer to the retailer offsets the fee charged by the manufacturer or distributor to the retailer. All retailers, distributors, and manufacturers selling architectural paint in the state must pay and pass through the fee, ensuring a level playing field for all parties.

3. Provide Information to Customers

Paint retailers in Vermont must provide customers with information regarding the program and how paint is managed. PaintCare has developed the materials, ensure they meet state requirements, and provides them free of charge to all paint retailers and others wishing to distribute them.

COMMON QUESTIONS ABOUT FEES

How much are the fees?

Vermont Fees, effective August 1, 2016, are by container size as follows:

- \$0.00 — Half pint or less
- \$0.49 — More than half pint to less than 1 gallon
- \$0.99 — 1 gallon
- \$1.99 — More than 1 gallon up to 5 gallons

How were the fees calculated?

Fees are set to cover the cost of a fully operating program. PaintCare estimated the annual sales of architectural paint in Vermont and divided the estimated total cost of the program by the number of containers to be sold in the state — taking into account the typical amount of leftover paint for each size container.

When the Vermont program started in May 2014, the fees were lower. Since then, the fees were increased to cover expenses. PaintCare is a nonprofit organization and operates programs on a state-by-state basis, so the fees may increase or decrease and be different from state to state.

Is the fee a deposit to be returned to customers?

No, the fee is not a deposit. Fees are used entirely to cover the cost of running the program and not given back as a deposit for the return of paint or empty paint cans — a common misunderstanding.

Must retailers show the fee on receipts?

No, but most stores do show the fee in order to explain the price increase. PaintCare encourages retailers to show the fee and list it as “PaintCare Fee” to aid in customer education and to ensure consistency and transparency.

Do retailers return the fee if a product is returned?

Yes, the fee should be returned because it is part of the purchase price.

Is sales tax applied to the fee itself?

Yes, the fee is part of the purchase price; therefore, sales tax is collected on the fee.

How will the public know about the fee?

PaintCare provides printed materials for retailers to distribute to the public to help explain the purpose of the fee, how the program works, and how to find a paint drop-off site. Before the program started, PaintCare provided these free materials to all paint retailers. Additional materials can be ordered as needed for no charge.

How do I know which products have fees?

Invoices from your suppliers will show fees for program products, so you simply pass on the fees for those items. PaintCare and the Agency of Natural Resources also post lists of registered paint manufacturers and brands on their websites – fees should be included on these products. Please visit www.paintcare.org/lists to see lists of manufacturers and brands registered in Vermont.



About PaintCare Fees

UPDATED — MARCH 2017

Laws in eight PaintCare States and the District of Columbia require retailers to add a stewardship assessment to architectural paint products and make sure they are not selling unregistered brands of architectural paint.

Paint Stewardship Programs

PaintCare Inc. is a nonprofit organization established by American Coatings Association to implement paint stewardship programs on behalf of paint manufacturers in states and the District of Columbia that pass paint stewardship laws. The main goals of the program are to decrease paint waste and recycle more postconsumer paint by setting up convenient drop-off sites in each state.

1. What is the Recovery Fee and how does it work?

The PaintCare program is funded through a paint stewardship assessment called the PaintCare Fee – fees are applied to the purchase price of architectural paint. The fees fund collection, transportation, and processing of unused postconsumer paint, public education about proper paint management, and administrative costs. The fee is paid to PaintCare by paint manufacturers. This fee is then added to the wholesale and retail purchase price of paint, passing the cost of managing postconsumer paint to everyone who purchases paint. This reduces municipal and state government costs for paint management and provides a funding source for a more convenient, statewide paint management program.

2. Do retailers have to pass on the fee?

Yes, each state's or jurisdiction's law requires retailers to pass on the fee to consumers, ensuring a level playing field for all parties.

3. What are the fees?

Fees are based on container size and vary by state or jurisdiction, as shown here.

California, Colorado, Connecticut, Maine, Oregon and Rhode Island

\$ 0.00 - Half pint or smaller
\$ 0.35 - Larger than half pint to smaller than 1 gallon
\$ 0.75 - 1 gallon
\$ 1.60 - Larger than 1 gallon up to 5 gallons

District of Columbia (as of November 1, 2016)

\$ 0.00 - Half pint or smaller
\$ 0.45 - Larger than half pint to smaller than 1 gallon
\$ 0.95 - 1 gallon up to 2 gallons
\$ 1.95 - Larger than 2 gallons up to 5 gallons

Minnesota (effective September 1, 2017)

\$ 0.00 - Half pint or smaller
\$ 0.49 - Larger than half pint to smaller than 1 gallon
\$ 0.99 - 1 gallon up to 2 gallons
\$ 1.99 - Larger than 2 gallons up to 5 gallons

Vermont (as of August 1, 2016)

\$ 0.00 - Half pint or smaller
\$ 0.49 - Larger than half pint to smaller than 1 gallon
\$ 0.99 - 1 gallon
\$ 1.99 - Larger than 1 gallon up to 5 gallons

4. How are fees calculated?

Fees are set to cover the cost of a fully implemented program. PaintCare estimates annual sales of paint in each state and then divides the cost of the program in that state by the number of containers sold in that state. Next, the fees are adjusted based on container size by taking into consideration the typical percentage of unused paint for each size (e.g., the percentage of unused paint from one five-gallon container is typically less than from five one-gallon containers).

PaintCare is a nonprofit organization, so the fees may be decreased if set at a level beyond what is needed to cover program expenses. Likewise, the fees may be increased if PaintCare does not collect enough money to cover the costs to operate the state program.

5. Are retailers required to show the fee on receipts?

No, but PaintCare encourages retailers to do so and to display it as PaintCare Fee to aid in consumer education. Most stores choose to show the fee on their receipts in order to inform the consumer about the PaintCare program and to explain the price increase.

6. Do retailers return the fee if someone returns a product?

Yes. The fee should be returned as part of the purchase price.

7. Is the fee taxable?

Yes, the fee is part of the purchase price of paint. Sales tax is collected on the fee, except in a state that does not have a sales tax, such as Oregon.

8. Is the fee to be applied to paint sold to customers who are exempt from sales taxes?

Yes, government agencies and other organizations that are exempt from sales taxes in PaintCare States (except for Oregon which has no sales tax) must still pay the fee, because it is part of the price of paint.

9. Is the fee a deposit that is returned to customers when they bring paint to a drop-off site?

No, the fee is not a deposit. The fees are used entirely to cover the cost of running the program.

10. Do retailers add the fee on sales starting on the first day of the program (i.e., on inventory purchased before the first day) even though they did not pay fees on inventory to the distributor or manufacturer?

[For new programs] Yes, in order to provide for a hard start date, retailers must add the fee on all inventory sold on or after the start date of the program. Fees collected on existing inventory stay with the retailer; they are not paid back to the distributor or manufacturer.

11. How does the public know about the fee?

PaintCare provides public education materials to retailers. These materials explain the purpose of the fee, where to take paint for recycling, and other information about the program. When a new state program begins, PaintCare mails a "starter pack" of materials to retailers. As needed, retailers may order additional free materials from PaintCare. In addition to retailer information, PaintCare works with contractor associations to get information to trade painters, and conducts general outreach including newspaper, radio, television, and on-line advertising.

12. How do we as a retailer know what products to put the fee on?

Your supplier's invoice should indicate that you are being charged the fee, so you simply pass on the fee for those items. Additionally, PaintCare and each state's oversight agency list all architectural paint manufacturers and brands that are registered for the program on their websites. Retailers may not sell brands that are not registered with the program. If your store sells architectural coatings that are not on the list of registered products, please notify PaintCare so we can contact the manufacturer to get them registered.

13. What Products Are Covered?

The products accepted at PaintCare drop-off sites are the same products that have a fee when they are sold. PaintCare Products include interior and exterior architectural coatings sold in containers of five gallons or less. However, they do not include aerosol products (spray cans), industrial maintenance (IM), original equipment manufacturer (OEM), or specialty coatings. For a detailed list of PaintCare and non-PaintCare products, please see PaintCare's "Products We Accept" Web page.



Become a Retail Drop-Off Site for Paint

UPDATED — OCTOBER 2016

A Vermont law affecting paint retailers took effect in May 2014.

The law requires paint retailers to add a stewardship assessment fee to architectural paint products and to make sure they are not selling unregistered brands of architectural paint. The law also requires paint retailers to provide customers with information about the program and how paint is managed. PaintCare will develop the materials, ensure they meet the state's requirements, and provide them free of charge to all paint retailers.

Retailers may also volunteer to be paint drop-off sites. This fact sheet explains how to partner with PaintCare as a retail drop-off site.

Paint Stewardship Program in Vermont

PaintCare Inc. is a nonprofit organization established by the American Coatings Association to implement this program on behalf of paint manufacturers in PaintCare States (those that adopt paint stewardship laws). PaintCare currently operates in California, Colorado, Connecticut, District of Columbia, Maine, Minnesota, Oregon, Rhode Island and Vermont.



Convenient Paint Recycling

PaintCare's major effort is to establish paint drop-off sites throughout each PaintCare State — at paint retailers and other locations — in order to provide convenient recycling opportunities for the public. Other locations include waste transfer stations and municipal household hazardous waste facilities and events. PaintCare has 1,700 drop off sites in eight states and the District of Columbia; more than 70 of these are in Vermont.

The program allows households and businesses to return unused architectural paint to drop-off locations throughout the state. Although household hazardous waste programs in Vermont may continue to accept paint from household and some businesses, many of these programs are not open year round and may not be as conveniently located as retail stores. In addition, some HHW programs do not accept latex paint, while retailers in the PaintCare program will. Stores that would like to become a drop-off site can fill out the Interest Form available in the Retailers section of www.paintcare.org/vt.

Benefits to Retailers

There are many benefits to becoming a drop-off site. Participating retailers will:

- ◆ Make recycling of leftover paint more convenient for your customers
- ◆ Support the paint industry's effort to lead the way in being responsible for end-of-life management of its own products
- ◆ Promote your store as environmentally responsible or "green"
- ◆ Increase customer foot traffic and sales
- ◆ Help relieve local government of their cost of managing leftover paint
- ◆ Do your part to help prevent the improper disposal of paint products

PaintCare Provides

- ◆ Listing of your store as a drop-off site on website, and in advertisements and promotional materials
- ◆ Storage bins
- ◆ Transportation and recycling services for the collected paint
- ◆ Training materials and staff training at your site
- ◆ Spill kits
- ◆ Program brochures, signage, and customer education materials

Drop-Off Site Responsibilities

- ◆ Provide secure storage area for collection bins
- ◆ Accept all brands of leftover PaintCare products from the public during operating hours
- ◆ Place unopened PaintCare products in collection bins
- ◆ Keep storage bins neat and properly packed
- ◆ Complete minimal paperwork related to tracking outgoing paint shipments
- ◆ Ensure staff are trained in PaintCare program guidelines and operating procedures
- ◆ Post “drop-off site” signs in store window and display consumer education materials

Contact

John Hurd
Program Manager (Maine and Vermont)
(802) 245-4821
jhurd@paint.org

What Products Are Covered?

The products accepted at PaintCare drop-off sites are the same products that have a fee when they are sold. PaintCare products include interior and exterior architectural coatings sold in containers of five gallons or less. However, they do not include aerosol products (spray cans), industrial maintenance (IM), original equipment manufacturer (OEM), or specialty coatings.

PaintCare Products

- ◆ Interior and exterior architectural paints: latex, acrylic, water-based, alkyd, oil-based, enamel (including textured coatings)
- ◆ Deck coatings, floor paints (including elastomeric)
- ◆ Primers, sealers, undercoaters
- ◆ Stains
- ◆ Shellacs, lacquers, varnishes, urethanes (single component)
- ◆ Waterproofing concrete/masonry/wood sealers and repellents (not tar or bitumen-based)
- ◆ Metal coatings, rust preventatives
- ◆ Field and lawn paints

Non-PaintCare Products

- ◆ Paint thinners, mineral spirits, solvents
- ◆ Aerosol paints (spray cans)
- ◆ Auto and marine paints
- ◆ Art and craft paints
- ◆ Caulking compounds, epoxies, glues, adhesives
- ◆ Paint additives, colorants, tints, resins
- ◆ Wood preservatives (containing pesticides)
- ◆ Roof patch and repair
- ◆ Asphalt, tar and bitumen-based products
- ◆ 2-component coatings
- ◆ Deck cleaners
- ◆ Traffic and road marking paints
- ◆ Industrial Maintenance (IM) coatings
- ◆ Original Equipment Manufacturer (OEM) (shop application) paints and finishes



Retailer Interest Form

To Be a PaintCare Drop-Off Location

Use this form to let us know that your store is interested in becoming a PaintCare drop-off site. PaintCare has published fact sheets for each state where we have a paint stewardship program to explain details about working with PaintCare to become a paint drop-off site. Please visit www.paintcare.org or call (855) 724-6809 to request a state-specific fact sheet.

Note: This form is designed in Word using tables. If you are using the electronic version, just start typing. The boxes will expand to fit.

SPONSOR

Store Name
Street Address
City/State/Zip
Mail Address
Business Hours

CONTACT 1

Name
Title
Phone
Email

CONTACT 2

Name
Title
Phone
Email

STORE TYPE

☐ Independent ☐ Franchise ☐ Chain ☐ Co-op ☐ Big Box

PARENT COMPANY

Fill this out if your participation is managed by a parent company:

Company Name
Contact Person
Phone
Email

STORAGE SPACE

How many cubic yard bins do you have space to store?

Each bin uses the floor space of a pallet, 3'x3'.

Normally, participating retailers are required to have at least two bins.

STORAGE LOCATION

☐ Indoors ☐ Outdoors (secured away from public)

QUESTIONS / COMMENTS

Use this space to ask questions or provide additional information:

--

SEND COMPLETED FORM TO

info@paint.org
(855) 385-2020 Fax
PaintCare, 901 New York Ave. NW, Washington DC 20001



Reuse Programs – Compensation & Reporting

UPDATED — OCTOBER 2016

PaintCare encourages household hazardous waste programs, reuse stores and others to operate paint reuse programs (i.e., swap shops or exchanges). Reuse programs return good quality unused paint to the local community at low or no cost. Reuse is a preferred method of waste management.

To encourage reuse, PaintCare will compensate paint drop-off sites operating a reuse program under a contract with PaintCare. PaintCare allows two different reporting methods by container or by volume as described here.

Operating a Reuse Program

Any PaintCare products (qualifying paint, stain and varnish as defined by PaintCare – please see www.paintcare.org/products-we-accept) that are distributed through these reuse programs must be in their original container, have an original label, and be in good physical and aesthetic condition. Contents must be liquid and relatively new. Containers should be closed securely before being placed in the reuse storage area. Customers must sign a waiver form explaining that the paint is taken “as is” with no guarantee of quality or contents. The customer is required to read, complete and sign the form, and site staff members are required to verify and record what has been taken by the customer.



Reuse room at the Household Hazardous Waste Facility at the Yolo County Central Landfill in Woodland, CA.

Method 1. Track and Report by Container

To track and report by container size, the following applies:

- ◆ Containers must be at least 50% full
- ◆ The number of containers distributed for reuse must be reported in three size categories for both latex and oil-based (total of 6 categories)
- ◆ Compensation is not provided for paint containers smaller than 1 quart
- ◆ The following compensation rates apply:

\$6.00 per 5-gallon container

\$1.20 per 1-gallon container

\$0.30 per quart container

The site does not need to track or report the actual volume of paint in the containers. Under this model, even though containers may be between 50% and 100% full, PaintCare will assume an average of 75% full when reporting reuse volumes in annual reports to state agencies.

Method 2. Track and Report by Volume

To track and report by volume (gallons), the following applies:

- ◆ Containers may contain any amount of paint in them
- ◆ The site must determine and report the total gallons of latex paint and the total gallons of oil-based paint distributed for reuse
- ◆ Compensation is provided at \$1.60 per gallon

The site must track and report the actual volume of paint in the containers using an internal methodology (e.g., weigh the cans on a scale, estimate weight by hand, do visual inspection). The methodology must be provided to PaintCare upon request.



Information for Solid Waste Transfer Stations, Recycling Facilities and Landfills

UPDATED — OCTOBER 2016

Vermont's paint stewardship law supports paint collection activities at solid waste transfer stations, recycling facilities and landfills.

Paint Stewardship Program in Vermont

Vermont's paint stewardship law was passed in June 2013. The new law required paint manufacturers to implement a comprehensive postconsumer paint management program in Vermont that includes making paint recycling easier for the public. The Vermont program began in May 2014.

Transfer stations, household hazardous waste (HHW) or recycling facilities and landfills can participate in the program by serving as paint drop-off sites for their customers. The cost of transportation and recycling of program products (e.g., paint, stains, varnish) will be paid by PaintCare. Funding for the Program comes from a "PaintCare Fee" applied to the sale of architectural paint sold in Vermont as of May 2014.



PaintCare

PaintCare Inc. is a nonprofit 501(c)(3) organization established by the American Coatings Association to implement state-mandated paint stewardship programs on behalf of paint manufacturers in each state that adopts a paint stewardship law.

Vermont was the fifth state to pass a paint stewardship law. PaintCare currently operates programs in California, Colorado, Connecticut, District of Columbia, Maine, Minnesota, Oregon, Rhode Island and Vermont.

Making Paint Recycling More Convenient

PaintCare will establish drop-off sites statewide for households and businesses to take leftover architectural paint. Although most drop-off sites will be at paint retailers, solid waste transfer stations (both municipal and private), household hazardous waste (HHW) facilities, recycling centers, and landfills may also volunteer to be PaintCare drop-off sites. Facilities that would like to become a drop-off site can fill out the Interest Form available in the Waste Facilities section of www.paintcare.org/vt.

Benefits to Solid Waste and Recycling Facilities

- ◆ Make recycling of leftover paint more convenient for your community
- ◆ Help your state conserve resources and keep paint out of the solid waste stream
- ◆ Save money on municipally-generated leftover paint
- ◆ Optional: Offer paint in good condition to the public for reuse, and receive a reimbursement based on either volume (\$1.60 per gallon) or by container (30 cents per quart container, \$1.20 per one-gallon container, and \$6.00 per five-gallon container). See our factsheet Reuse Programs Compensation and Reporting for details.

PaintCare Drop-off Sites Receive

- ◆ Storage bins
- ◆ Transportation and recycling services for the collected paint
- ◆ On-site staff training and training materials
- ◆ Program brochures and signage
- ◆ Optional: Free publicity if your site allows the public to drop off program products

Drop-off Site Responsibilities

- ◆ Provide secure storage area for collection bins (cubic yard boxes shown below) or drums
- ◆ Accept PaintCare products from your customers during normal operating hours
- ◆ Properly pack PaintCare products in storage bins
- ◆ Assist transporter with loading and unloading of full and empty storage bins
- ◆ Complete minimal paperwork related to tracking outgoing paint shipments
- ◆ Ensure staff are trained in PaintCare program guidelines and operating procedures

Contact

John Hurd

Program Manager (Maine and Vermont)

(802) 245-4821

jhurd@paint.org

What Products Are Covered?

The products accepted at PaintCare drop-off sites are the same products that have a fee when they are sold.

PaintCare products include interior and exterior architectural coatings sold in containers of five gallons or less. However, they do not include aerosol products (spray cans), industrial maintenance (IM), original equipment manufacturer (OEM), or specialty coatings.

PaintCare Products

- ◆ Interior and exterior architectural paints: latex, acrylic, water-based, alkyd, oil-based, enamel (including textured coatings)
- ◆ Deck coatings, floor paints (including elastomeric)
- ◆ Primers, sealers, undercoaters
- ◆ Stains
- ◆ Shellacs, lacquers, varnishes, urethanes (single component)
- ◆ Waterproofing concrete/masonry/wood sealers and repellents (not tar or bitumen-based)
- ◆ Metal coatings, rust preventatives
- ◆ Field and lawn paints

Non-PaintCare Products

- ◆ Paint thinners, mineral spirits, solvents
- ◆ Aerosol paints (spray cans)
- ◆ Auto and marine paints
- ◆ Art and craft paints
- ◆ Caulking compounds, epoxies, glues, adhesives
- ◆ Paint additives, colorants, tints, resins
- ◆ Wood preservatives (containing pesticides)
- ◆ Roof patch and repair
- ◆ Asphalt, tar and bitumen-based products
- ◆ 2-component coatings
- ◆ Deck cleaners
- ◆ Traffic and road marking paints
- ◆ Industrial Maintenance (IM) coatings
- ◆ Original Equipment Manufacturer (OEM) (shop application) paints and finishes



Large Volume Pick-Up (LVP) Service

PaintCare offers a free pick-up service to painting contractors, property managers, and others with large amounts of leftover architectural paint.

Who is PaintCare?

PaintCare Inc. is a non-profit organization established by the American Coatings Association to operate paint stewardship programs on behalf of paint manufacturers in states that pass paint stewardship laws.

Paint Drop-Off Sites

In states with a paint stewardship program, PaintCare's primary effort is to set up conveniently located drop-off sites—places where residents and businesses may take their unwanted paint for no charge. Sites set their own limits on the volume of paint they accept from customers per visit (usually from 5 to 20 gallons). To find a drop-off site near you, please use PaintCare's site locator at www.paintcare.org or call (855) 724-6809.

Large Volume Pick-Ups

For those who have accumulated a large volume or stockpile of paint, PaintCare also offers a pick-up service. Large volume means at least 200 gallons, measured by container size (not content). On a case-by-case basis, PaintCare may approve a pick-up for less than 200 gallons if there are no drop-off sites in your area. After two or three pick-ups, you may be switched to a regular service (see next page).

Drums and Bulked Paint Are Not Accepted

PaintCare only accepts paint in containers that are 5 gallons or smaller in size. Leave paint in original cans with original labels; do not combine or bulk paint from small cans into larger ones. If you have unwanted paint in drums or containers larger than 5 gallons, please contact a licensed paint recycling company or a hazardous waste transportation company to assist you.

HOW TO REQUEST A LARGE VOLUME PICK-UP

1. Sort and count your paint

We need to know the number of each container size and the type of products you have, sorted into two categories: (1) water-based paints and stains and (2) oil-based paint and stains and any other program products (sealers and clear top-coat products, such as varnish and shellac).

2. Fill out the LVP Request Form and send it in

Fill out a paper or electronic version of the "Large Volume Pick-Up Request Form" and return it to PaintCare by email, fax, or regular mail. (Visit www.paintcare.org or call PaintCare for the form.)

Scheduling

After reviewing your form, PaintCare staff will either approve your site for a pick-up or inform you of the best place to take your paint if you do not meet the volume requirement. If approved, you will be put in contact with our licensed hauler to schedule a pick-up. It may be several weeks before your pick-up occurs.

On the Day of Your Pick-Up

Sort your products into the two categories noted above and store them in an area that has easy access. If the paint is a far distance from where the hauler parks, the path between should be at least four feet wide to accommodate movement of the boxes.



Please plan to have staff available to pack the paint cans into the boxes. The hauler may be able to provide some assistance, but we require your staff to be present and provide labor to pack boxes. Once your paint is properly packed and loaded onto the hauler's truck, you will sign a shipping document and receive a copy for your records. Your paint will then be taken to an authorized processing facility for recycling.

Note: Paint must be in original containers and not leaking.

Repeat Service for Large Volume Users

For businesses that generate large volumes of unwanted paint on a regular basis, a service for recurring direct pick-ups is available. With this service, you will be provided with empty bins, then request a pick-up when at least three bins are filled. PaintCare will provide onsite training on how to properly pack the paint, and you will be required to sign a contract with PaintCare.

Limits on Businesses

To use the program for oil-based products, your waste must qualify as exempt under federal (40 CFR § 262.14) and state/local hazardous waste generator rules. Most notably, these rules require that your business (a) generates no more than 220 pounds (about 20-30 gallons, depending on type) of hazardous waste per month, and (b) accumulates no more than 2,200 pounds (approximately 220 gallons) of hazardous waste at any given time. If your business fails to qualify as an exempt generator, it will not be able to use the program for oil-based products. For more information on the federal hazardous generator rules, please go to www.paintcare.org/limits.

Note: When calculating how much hazardous waste you generate in a month, do not count latex paint.

If You Have Products We Don't Accept

The program does not accept all paints (such as aerosols and automotive finishes) or other hazardous waste. If you have solvents, thinners, pesticides, or any non-PaintCare products (see list to right for examples), we recommend that residents contact their local household hazardous waste (HHW) program. Some HHW programs allow businesses to use their program for a modest fee. Otherwise, businesses should contact a licensed hazardous waste transportation company.

What Products Are Covered?

The products accepted at PaintCare drop-off sites are the same products that have a fee when they are sold. PaintCare Products include interior and exterior architectural coatings sold in containers of 5 gallons or less. However, they do not include aerosol products (spray cans), industrial maintenance (IM), original equipment manufacturer (OEM), or specialty coatings.

PAINTCARE PRODUCTS

- Interior and exterior architectural paints: latex, acrylic, water-based, alkyd, oil-based, enamel (including textured coatings)
- Deck coatings, floor paints
- Primers, sealers, undercoaters
- Stains
- Shellacs, lacquers, varnishes, urethanes
- Waterproofing concrete/masonry/wood sealers and repellents (not tar or bitumen-based)
- Metal coatings, rust preventatives
- Field and lawn paints

NON-PAINTCARE PRODUCTS

- Paint thinners, mineral spirits, solvents
- Aerosol paints (spray cans)
- Auto and marine paints
- Art and craft paints
- Caulking compounds, epoxies, glues, adhesives
- Paint additives, colorants, tints, resins
- Wood preservatives (containing pesticides)
- Roof patch and repair
- Asphalt, tar, and bitumen-based products
- 2-component coatings
- Deck cleaners
- Traffic and road marking paints
- Industrial Maintenance (IM) coatings
- Original Equipment Manufacturer (OEM) (shop application) paints and finishes

MORE INFORMATION

(855) 724-6809 or (855) PAINT09
www.paintcare.org or info@paintcare.org

PAINTCARE INC.
901 NEW YORK AVENUE NW, SUITE 300W
WASHINGTON, DC 20001



Vermont Paint Stewardship Program

Each year about 650 million gallons of architectural paint is sold in the United States. Did you know that about 10 percent goes unused and is available for recycling?

Vermont's Paint Stewardship Law requires the paint manufacturing industry to develop a financially sustainable and environmentally responsible program to manage postconsumer architectural paint.

The program includes education about buying the right amount of paint, tips for using up remaining paint and setting up convenient recycling locations throughout the state.

Paint manufacturers established PaintCare, a nonprofit organization, to run paint stewardship programs in states with applicable laws.

PaintCare Products

These products have fees when you buy them and are accepted for free at drop-off sites:

- Interior and exterior architectural paints: latex, acrylic, water-based, alkyd, oil-based, enamel (including textured coatings)
- Deck coatings, floor paints (including elastomeric)
- Primers, sealers, undercoaters
- Stains
- Shellacs, lacquers, varnishes, urethanes (single component)
- Waterproofing concrete/masonry/wood sealers and repellents (not tar or bitumen-based)
- Metal coatings, rust preventatives
- Field and lawn paints

Leaking, unlabeled and empty containers are not accepted at drop-off sites.

⊘ Non-PaintCare Products

- Paint thinners, mineral spirits, solvents
- Aerosol paints (spray cans)
- Auto and marine paints
- Art and craft paints
- Caulk, epoxies, glues, adhesives
- Paint additives, colorants, tints, resins
- Wood preservatives (containing pesticides)
- Roof patch and repair
- Asphalt, tar and bitumen-based products
- 2-component coatings
- Deck cleaners
- Traffic and road marking paints
- Industrial Maintenance (IM) coatings
- Original Equipment Manufacturer (OEM) (shop application) paints and finishes

For information about recycling and proper disposal of non-PaintCare products, please contact your garbage hauler, local environmental health agency, household hazardous waste program or public works department.



Recycle

with PaintCare



VERMONT

Places to Take Old Paint

Paint recycling is more convenient with PaintCare. We set up paint drop-off sites throughout Vermont. To find your nearest drop-off site, use PaintCare's search tool at www.paintcare.org or call our hotline at (855) 724-6809.

How to Recycle

PaintCare sites accept all brands of old house paint, stain and varnish – even if they are 20 years old! Containers must be five gallons or smaller, and a few types of paint are not accepted. See back panel for a list of what you can recycle.

All PaintCare drop-off sites accept up to five gallons of paint per visit. Some sites accept more. Please call the site in advance to make sure they can accept the amount of paint you would like to recycle.

Make sure all containers of paint have lids and original labels, and load them securely in your vehicle. Take them to a drop-off site during their regular business hours. We'll take it from there.



What Happens to the Paint?

PaintCare will make sure that your leftover paint is remixed into recycled paint, used as a fuel, made into other products or properly disposed.

Who Can Use the Program?

People bringing paint from their homes can bring as much latex or oil-based paint as the site is willing to accept.

Businesses (painting contractors and others) can use this program with one restriction: If your business produces more than 220 pounds (about 20-30 gallons) of hazardous waste per month, you may use the drop-off sites for your latex paint only but not for your oil-based paint. Contact PaintCare to learn more about this restriction.

Large Volume Pick-Up

If you have at least 300 gallons of paint to recycle at your business or home, ask about our free pick-up service. Please call for more details or to request an appointment.

PaintCare Fee

PaintCare is funded by a fee paid by paint manufacturers for each can of paint they sell in the state. Manufacturers pass the fee to retailers, who then apply it to the price of paint. Stores can choose whether or not to show the fee on their receipts. Fees, effective as of August 1, 2016, are based on the size of the container as follows:

- \$ 0.00 Half pint or smaller
- \$ 0.49 Larger than half pint to smaller than 1 gallon
- \$ 0.99 1 Gallon
- \$ 1.99 Larger than 1 gallon up to 5 gallons

Not a Deposit

The fee is not a deposit – it is part of the purchase price. The fees are used to pay the costs of running the program: recycling, public education, staffing and other expenses.

Contact Us

To learn more or find a drop-off site, please visit www.paintcare.org or call (855) 724-6809.



**It's easy to recycle
your leftover paint,
stain and varnish.**

Recycle with PaintCare

Find a drop-off site near you:
(855) 724-6809 • www.paintcare.org

**Buy right.
Use it up.
Recycle the rest.**

Manufacturers of paint created PaintCare, a nonprofit organization, to set up convenient places for you to recycle leftover paint. We're working to provide environmentally sound and cost-effective recycling programs in your state and others with paint stewardship laws.

LEARN MORE

Visit www.paintcare.org or follow us on Facebook for tips on how to buy the right amount of paint, store paint properly, use up leftover paint, and find a drop-off site. We also have a free pick-up service for businesses or households with at least 300 gallons of paint to recycle.



Paint Recycling Program

About the Vermont PaintCare Program

PAINTCARE

Paint manufacturers created PaintCare, a nonprofit organization, to set up convenient places for households and businesses to recycle leftover paint. PaintCare sets up paint drop-off sites throughout states that adopt paint stewardship laws.

PAINTCARE PRODUCTS

These products have fees when purchased and will be accepted for free at PaintCare drop-off sites:

- Latex paints (acrylic, water-based)
- Oil-based paints (alkyd)
- Stains
- Primers and undercoaters
- Shellacs, lacquers, varnishes, urethanes
- Deck and floor paints
- Sealers and waterproofing coatings for wood, concrete and masonry

⊘ NON-PAINTCARE PRODUCTS

- Paint thinners and solvents
- Aerosol paints (spray cans)
- Auto and marine paints
- Paint additives, colorants, tints, resins
- Wood preservatives (containing pesticides)
- Asphalt, tar and bitumen-based products
- 2-component coatings
- Coatings used for Original Equipment Manufacturing or shop application
- Any non-coatings (caulk, spackle, cleaners, etc.)

FEES

PaintCare fees are applied to the purchase price of architectural paint sold in the state as required by state law. Fees, effective as of August 1, 2016, are applied to each container and vary by the size of the container as follows:

Half pint or smaller	\$ 0.00
More than half pint to smaller than 1 gallon	\$ 0.49
1 gallon	\$ 0.99
More than 1 gallon up to 5 gallons	\$ 1.99

For more information or to find a place to take your unwanted paint for recycling, please ask for the PaintCare brochure, visit www.paintcare.org or call (855) 724-6809.



Recycle with PaintCare



WE CAN HELP *Recycle* YOUR PAINT www.paintcare.org

PAINT RECYCLING MADE EASY

Paint manufacturers formed PaintCare, a nonprofit organization, to make paint recycling more convenient, cost effective, and environmentally sound. Paint doesn't belong in the trash or down the drain. If you can't use it up, recycle it with PaintCare.

We're setting up locations in your state where you can bring old paint for free all year-round.

PAINTCARE PRODUCTS

(YOU CAN RECYCLE THESE)

These products have fees when you buy them and are accepted for free when you drop them off for recycling:

- Water-based paints (latex, acrylic)
- Oil-based paints (alkyd)
- Stains
- Primers
- Varnishes
- Shellacs
- Lacquers
- Urethanes
- Deck paints
- Floor paints
- Sealers
- Waterproofing coatings

NON-PAINTCARE PRODUCTS

Leaking, unlabeled, and empty containers are not accepted.

- Paint thinners and solvents
- Aerosol paints (spray cans)
- Auto and marine paints
- Paint additives, colorants, tints, resins
- Wood preservatives (containing pesticides)
- Asphalt, tar, and bitumen-based products
- 2-component coatings
- Coatings used for Original Equipment Manufacturing or shop application
- Any non-coatings (caulk, spackle, cleaner, etc.)

PROGRAM FUNDING

The PaintCare Fee is applied to the purchase price of architectural paint sold in Vermont as required by law. Fees are based on container size as follows:

Half pint or smaller	\$ 0.00
Larger than half pint to smaller than 1 gallon	\$ 0.49
1 gallon	\$ 0.99
Larger than 1 gallon up to 5 gallons	\$ 1.99

LEARN MORE

Please ask for a PaintCare program brochure, visit www.paintcare.org, or call (855) 724-6809.



Recycle your paint here.

[DURING BUSINESS HOURS ONLY]

ACCEPTABLE

- Latex house paint
- Oil-based house paint
- Primer
- Stains and sealers
- Varnish and shellac
- All brands



NOT ACCEPTABLE

- Paint thinner
- Two-component paints
- Aerosols
- Other chemicals

PLEASE DON'T BRING CONTAINERS THAT ARE

- Leaking
- Unlabeled
- Empty



Recycle with PaintCare

For a complete list of acceptable products, please ask for the PaintCare brochure, call (855) 724-6809 or visit www.paintcare.org.



Information for Painting Contractors

UPDATED — APRIL 2017

Vermont's Paint Stewardship Program began in May 2014.

The Vermont Paint Stewardship law requires paint manufacturers to set up and operate a stewardship program in Vermont. The program is funded by a fee on each container of architectural paint sold in the state. The program sets up drop-off sites at retail stores and other sites throughout the state where households and businesses are able to take most types of leftover paint for recycling, free of charge.

Paint Stewardship

The American Coatings Association (ACA) worked with various stakeholders interested in the management of postconsumer paint to develop a Paint Stewardship Program in the United States. PaintCare Inc. is a nonprofit organization established by ACA to implement the program on behalf of paint manufacturers in states that adopt paint stewardship laws. PaintCare operates programs in California, Colorado, Connecticut, District of Columbia, Maine, Minnesota, Oregon, Rhode Island, and Vermont.

The main goals of the program are to decrease paint waste and recycle more postconsumer paint by setting up convenient drop-off sites in each PaintCare state.



Fees and Funding

As required by state law, a paint stewardship assessment (PaintCare Fee) must be added by manufacturers to the wholesale price of all architectural paint sold in the state. This fee is paid by manufacturers to PaintCare to fund setting up drop-off sites for leftover, postconsumer paint, and for the transportation, recycling, and proper disposal of that paint. The fees also pay for consumer education and program administrative costs.

Fees vary from state to state. Vermont fees, effective August 1, 2016, are based on container size as follows:

\$ 0.00 — Half pint or smaller

\$ 0.49 — Larger than half pint and smaller than 1 gallon

\$ 0.99 — 1 Gallon

\$ 1.99 — Larger than 1 gallon up to 5 gallons

The law also requires that each distributor and retailer include the PaintCare Fee with their sale price of architectural paint sold in the state. Displaying the fee on invoices and receipts is not mandatory for distributors or retailers; however, PaintCare encourages them to show the fee and list it as PaintCare Fee to aid in customer and dealer education and to ensure transparency.

Notice for Painting Contractors

It is expected that contractors will pass the fees on to their customers in order to recoup the fees they pay on the product.

When estimating jobs, contractors should take these fees into account by checking with suppliers to make sure the quotes for paint products include the fees. You should also let your customers know that you will be including these fees in your quotes.

Paint Drop-Off Sites

PaintCare has more than 70 paint drop-off sites across Vermont. Most drop-off sites are at paint stores. Other sites include certain solid waste transfer stations, recycling centers, and government-sponsored household hazardous waste programs. Participation as a drop-off site is voluntary.

Use of Retail Drop-Off Sites by Businesses

Retail drop-off sites provide a convenient and no cost recycling option for painting contractors and other businesses. Businesses that generate less than 220 pounds of hazardous waste* per month will be able to use these sites to recycle all PaintCare products (both water and oil-based) with some restrictions on quantities per month.

Larger businesses (those that generate more than 220 pounds of hazardous waste per month) may use the drop-off sites for their water-based PaintCare products only; they are not able to use the sites for oil-based paint or other solvent-based products.

**220 pounds is about 20-30 gallons of paint. When counting how much hazardous waste you generate in a month, oil-based paint counts (because by law it is a hazardous waste), but latex and other water-based paint does not count toward the 220 pound monthly total.*



Pick-Up Service for Large Volumes

Businesses with at least 200 gallons of postconsumer paint to recycle may qualify to have their paint picked up by PaintCare at no additional cost. To learn more about this service or to request an appointment, please visit www.paintcare.org/pickup or call (855) 724-6809.

Contact

John Hurd
Program Manager (Maine and Vermont)
(802) 245-4821
jhurd@paint.org

WHAT PRODUCTS ARE COVERED?

The products accepted at PaintCare drop-off sites are the same products that have a fee when they are sold.

PaintCare Products include interior and exterior architectural coatings sold in containers of five gallons or less. However, they do not include aerosol products (spray cans), industrial maintenance (IM), original equipment manufacturer (OEM), or specialty coatings.

PaintCare Products

- ◆ Interior and exterior architectural paints: latex, acrylic, water-based, alkyd, oil-based, enamel (including textured coatings)
- ◆ Deck coatings, floor paints (including elastomeric)
- ◆ Primers, sealers, undercoaters
- ◆ Stains
- ◆ Shellacs, lacquers, varnishes, urethanes (single component)
- ◆ Waterproofing concrete/masonry/wood sealers and repellents (not tar or bitumen-based)
- ◆ Metal coatings, rust preventatives
- ◆ Field and lawn paints

Non-Paintcare Products

- ◆ Paint thinners, mineral spirits, solvents
- ◆ Aerosol paints (spray cans)
- ◆ Auto and marine paints
- ◆ Art and craft paints
- ◆ Caulking compounds, epoxies, glues, adhesives
- ◆ Paint additives, colorants, tints, resins
- ◆ Wood preservatives (containing pesticides)
- ◆ Roof patch and repair
- ◆ Asphalt, tar, and bitumen-based products
- ◆ 2-component coatings
- ◆ Deck cleaners
- ◆ Traffic and road marking paints
- ◆ Industrial Maintenance (IM) coatings
- ◆ Original Equipment Manufacturer (OEM) (shop application) paints and finishes



PAINTCARE PRODUCTS

These products have fees when purchased and are accepted for free at drop-off sites:

- Interior and exterior architectural paints: latex, acrylic, water-based, alkyd, oil-based, enamel (including textured coatings)
- Deck coatings, floor paints (including elastomeric)
- Primers, sealers, undercoaters
- Stains
- Shellacs, lacquers, varnishes, urethanes (single component)
- Waterproofing concrete/masonry/wood sealers and repellents (not tar or bitumen-based)
- Metal coatings, rust preventatives
- Field and lawn paints



NON-PAINTCARE PRODUCTS

- Paint thinners, mineral spirits, solvents
- Aerosol paints (spray cans)
- Auto and marine paints
- Arts and crafts paints
- Caulking compounds, epoxies, glues, adhesives
- Paint additives, colorants, tints, resins
- Wood preservatives (containing pesticides)
- Roof patch and repair
- Tar and bitumen-based products
- 2-component coatings
- Deck cleaners
- Traffic and road marking paints
- Industrial Maintenance (IM) coatings
- Original Equipment Manufacturer (OEM) (shop application) paints and finishes

Products must be in original containers with original labels. Latex paint that is dried out and "rock hard" is acceptable. Leaking, unlabeled, and empty containers are not accepted.



PRODUCTOS DEL PROGRAMA

Estos productos tienen cargos al comprarlos y se aceptan gratuitamente en los lugares de entrega:

- Pinturas arquitectónicas para interiores y exteriores: látex, acrílica, a base de agua, alquídica, a base de aceite, esmalte (incluidos los revestimientos con textura)
- Revestimientos para terrazas, pinturas para piso (incluso elastómeros)
- Imprimadores, selladores, primera mano
- Tinturas
- Goma lacas, lacas, barnices, uretanos (componente simple)
- Selladores de impermeabilización de concreto/mampostería/madera y repelentes (sin alquitrán o a base de betún)
- Revestimiento de metal, prevención de óxido
- Pinturas para el campo y césped



NO SE INCLUYEN EN EL PROGRAMA

- Diluyentes, alcoholes minerales, solventes de pintura
- Pinturas en aerosol (latas de aerosol)
- Pinturas para autos y embarcaciones
- Pinturas artesanales
- Compuestos de enmasillado, epóxidos, pegamentos, adhesivos
- Aditivos para pinturas, colorantes, tintes, resinas
- Conservantes de madera (que contienen pesticidas)
- Remiendos y reparación de techos
- Alquitrán y productos a base de betún
- Revestimientos de componente doble
- Limpiadores de terrazas
- Pinturas de tráfico y señalización vial
- Revestimientos industriales de mantenimiento (IM, por sus siglas en inglés)
- Pinturas y acabados de fabricantes de equipos originales (OEM, por sus siglas en inglés) (aplicación en la tienda)

Los productos deben estar en sus envases originales. Se acepta pintura de látex que está seca y "dura como una roca." No se aceptan envases vacíos, que tengan fugas, o sin etiqueta.



We are a PaintCare Partner

Fees on the
sale of paint
in Vermont
help pay for
our program.



Recycle with PaintCare

To learn more, please call (855) 724-6809
or visit www.paintcare.org.



We're a PaintCare Drop-Off Site

✓ WE ACCEPT

- Latex House Paint
- Oil-Based House Paint
- Primer
- Stains
- Sealers
- Varnish and Shellac

✗ WE CAN'T ACCEPT

- Aerosols (Spray Cans)
- Auto and Marine Paints
- 2-Part Paints
- Road Marking Paint
- Industrial Paint
- Tints and Resins
- Thinner and Solvent
- Caulk and Spackle
- Wood Treatment/Preservatives
- Deck Cleaner
- Tar/Asphalt Products

CONTAINERS

- No larger than 5 gallons
- Must have original labels
- Must not be leaking
- Must have secure lids

NO DUMPING

STOP!

**IT'S ILLEGAL
to dump or abandon
Paint, Oil, or other
Hazardous Waste**



**THIS AREA MAY BE UNDER
VIDEO SURVEILLANCE**

Violators Will Be Prosecuted

Please wait for staff assistance when dropping off leftover paint.

Espere a que le atienda un empleado de la
compañía cuando vaya a desechar pintura sobrante.





Joint Outreach Projects

UPDATED — JUNE 2017

THE BASICS

Introduction

If you are a local government that has partnered with PaintCare, we offer limited funding support for outreach activities that involve PaintCare.

We are most interested in partnering with you when we are setting up new PaintCare sites, where participation is low, and to promote one-day household hazardous waste events to boost the amount of paint we can collect at one time. We have supported radio, newspaper and direct mail advertising and will consider other media.

Review and Approval

Project budgets and all creative work must be reviewed and pre-approved by PaintCare. Creative work includes text, images, and scripts. When possible, all projects must include PaintCare's website address and logo and mention that people can find PaintCare drop-off sites in other areas (via our website).

Proposal Form

Please complete our Proposal Form for Joint Outreach Projects and email it to fpatterson@paint.org or your local PaintCare staff person. The Word and pdf versions of the form can be downloaded from the Waste Facilities section of each state's page at www.paintcare.org.

Flickr

We have lots of artwork and photos you can borrow for creating drafts at www.flickr.com/photos/paintcare/, but please be sure to ask for permission to use them in your final design.

WHAT WE ASK OF YOU

Print-Based

For print materials (brochures, postcards, etc.) you will be responsible for sending artwork files to your printer, coordinating mailings, and distribution. After the project is completed, along with your invoice, we ask for a description of how, when, and where the piece was distributed or used, and an electronic copy of the final piece.

Newspaper

For newspaper ads, you will be responsible for sending artwork files to the newspaper and scheduling. At the start of the project, we ask you to provide PaintCare with draft text, dimensions and due dates for the ads. After the project is completed, we ask for a list of run dates for each newspaper and a scan or clipping of each ad.

Radio

For radio advertising, you will be responsible for providing the pre-approved scripts to the stations and handling scheduling. After the project is completed, along with your invoice, we ask you to provide text of the final script with a list of run dates and times.

Other

For other types of projects, we will ask you for similar things – you will coordinate everything and send PaintCare supporting documentation along with your invoice so we have a record of the projects and examples to show others.

DESIGN ASSISTANCE

PaintCare can provide assistance with basic layout and graphic design using in-house staff. When we provide this type of assistance we will provide electronic files for you to send for printing or ad placement. Other than editing and commenting on scripts, we do not provide in-house assistance with audio or video production.

Please allow plenty of time for project planning, approvals, and some back-and-forth editing. Depending on the time of year, this may take 4-8 weeks.

REIMBURSEMENT

PaintCare provides reimbursements for pre-approved projects only. We do not provide money up front, pay vendors directly, or accept requests for reimbursements on projects that have already been completed. Generally PaintCare will reimburse for half of the total direct costs for pre-approved projects; however, we might offer a different amount based on how much of the message is dedicated to PaintCare, our budgets, and our other outreach taking place in your area.

To be reimbursed after the project is completed, send an invoice from your government agency, samples of the final pieces, and copies of invoices from your vendors to Farron Patterson at fpatterson@paint.org and copy paintcare@bill.com to speed up payment. The "To:" space on the invoice should be addressed to PaintCare Inc., 901 New York Ave NW #300W, Washington DC, 20001. In the space for purchase orders please write "5839-OTJ." See sample invoice below.

{Sample Invoice}

Environmental Services Program
Washington County
123 Government Way
Anytown, State 55776

June 24, 2017

Invoice: 2452187

Purchase Order: 5839-OTJ

Outreach Department
PaintCare Inc.
901 New York Ave NW #300W
Washington DC, 20005

Description:

- Newspaper ad promoting one day event held in Anytown on May 1, 2017
- Three 5x5 ads ran on April 13, 2017 in the County Journal
- Total invoices from newspapers: \$1,487.00
- Invoice and copy of one ad are attached
- Per prior discussion, PaintCare agreed to reimburse county for \$750
- Contact person: Marie Chen, 202-555-1212

Invoice Amount: \$750.00

Remit to: Environmental Services Program
Washington County
123 Government Way
Anytown, State 55776



Proposal Form for Joint Outreach Projects

Please read "Fact Sheet for Joint Outreach Projects" (www.paintcare.org/xx-factsheet-joint-outreach.pdf) before starting to fill out this form.

Contact Person	
Agency	
Phone	
Email	
Please give this project a name.	
Describe your project.	
Describe your audience.	
Would you need any assistance? If so, please describe.	
When do you plan to do this project?	
When do creative materials need to be finalized for submittal to media outlets or printer?	
Provide estimates for each anticipated outside vendor.	
Comments or questions.	

Appendix E

Independent Financial Audit



November 20, 2015

Ms. Valerie Bernardo, CPA
PaintCare
1500 Rhode Island Avenue, NW
Washington, DC 20005

**RE: Independent Audit, State of Vermont Paint Stewardship Program
(HRP #PAI2005.CE)**

Dear Ms. Bernardo:

HRP Associates, Inc. (HRP) has completed an Independent Audit of PaintCare's calculations of the Paint stewardship Assessment to be placed on the sale of each container of architectural paint sold in the State of Vermont (State) to administer a Paint Stewardship Program. A summary of the Audit Findings are provided below.

Program Costs

The calculations and assumptions made to determine the program costs were reviewed and found to be reasonable. HRP reviewed the actual results from the first 14 months of the program (May 1, 2014 through June 30, 2015) as well as the projected costs for the fiscal years ending June 30, 2016 and 2017.

PaintCare's anticipated expenses took into account the costs for collection, transportation, processing, collection containers, one-day event setup fees, communications (education and outreach), personnel & professional fees, state permitting, and travel, in addition to an allocation of corporate expenses. The expenses and assumptions made are acceptable and within industry standards. Savings were realized by utilizing an existing network of household hazardous waste collection facilities.

Paint Assessment

The anticipated volume of paint containers expected to be collected in Vermont and the number of each type of paint container sold were based off of actual data from the most recently completed fiscal year.

HRP independently reviewed the calculations performed by PaintCare for accuracy and the calculations were deemed sufficient. Based on our review, we find the Paint Stewardship Assessment, determined by PaintCare, to be reasonable and not to exceed the actual operational costs to administer the Paint Stewardship Program. The Paint Stewardship Assessment (fee structure) is adjusted for the Vermont program to accommodate the higher level of postconsumer paint collected in Vermont, as compared to other state programs.

Ms. Bernardo
November 20, 2015
Page 2

If you have any questions or require additional information, please feel free to contact HRP at (860) 674-9570.

Sincerely,
HRP ASSOCIATES, INC.

A handwritten signature in blue ink that reads "Thomas Battles". The signature is written in a cursive, flowing style.

Thomas R. Battles, P.E.
Director of Civil Engineering