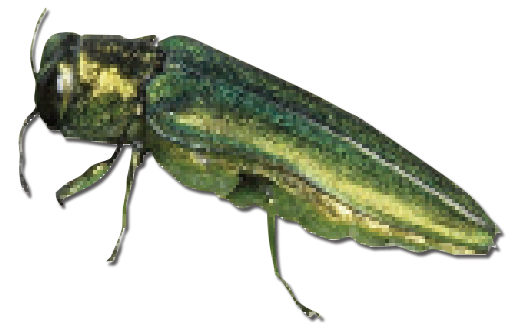


You are in an Emerald Ash Borer infested area

All of Vermont's 160 million ash trees
are at risk to the tree-killing pest, the
Emerald Ash Borer



There are several ways that you can recover some of the value and
put the removed ash wood to good use:

YOU CAN HELP!

CHIP your ash wood waste

USE it as local firewood in the infested area

LEAVE it in the infested area for at least one year

DISPOSE of your wood waste here

This facility responsibly accepts and manages
ash to **SLOW THE SPREAD** of Emerald Ash Borer

Ash wood, bark or chips brought to this facility will be treated promptly.
Please inform the Facility Operator that you are disposing of ash material,
and the origin of the material.



Whatever you choose to do with your
removed ash tree, to slow the spread, be sure that
NO WOOD LEAVES THE INFESTED AREA.

Learn more at VTinvasives.org/eab

