

Well: 995OBR **Date Logged:** 10/5/2016

Well Report Number:

Town: Bennington

County: Bennington

Logged by: Vermont Geological Survey and SUNY Plattsburgh

UTM Easting (18 T m): 641053.00 **UTM Northing (18 T m):** 4751664.00

Vermont State Plane E (m): 436942.287 **Vermont State Plane N (m):** 45228.43

Longitude: -73.27216 **Latitude:** 42.90455

Declination Correction (°): 15.00

Description of log-Measuring Point (LMP): Top of Casing

Altitude of LMP (m): 211.21

Land Surface Elevation (m): 210.37

Height of LMP above Land Surface (m): 0.84

DTW (m): 5.18

BOW (m): 56.16

BOC (m): 7.05 **Casing Diameter (cm):** 15.24

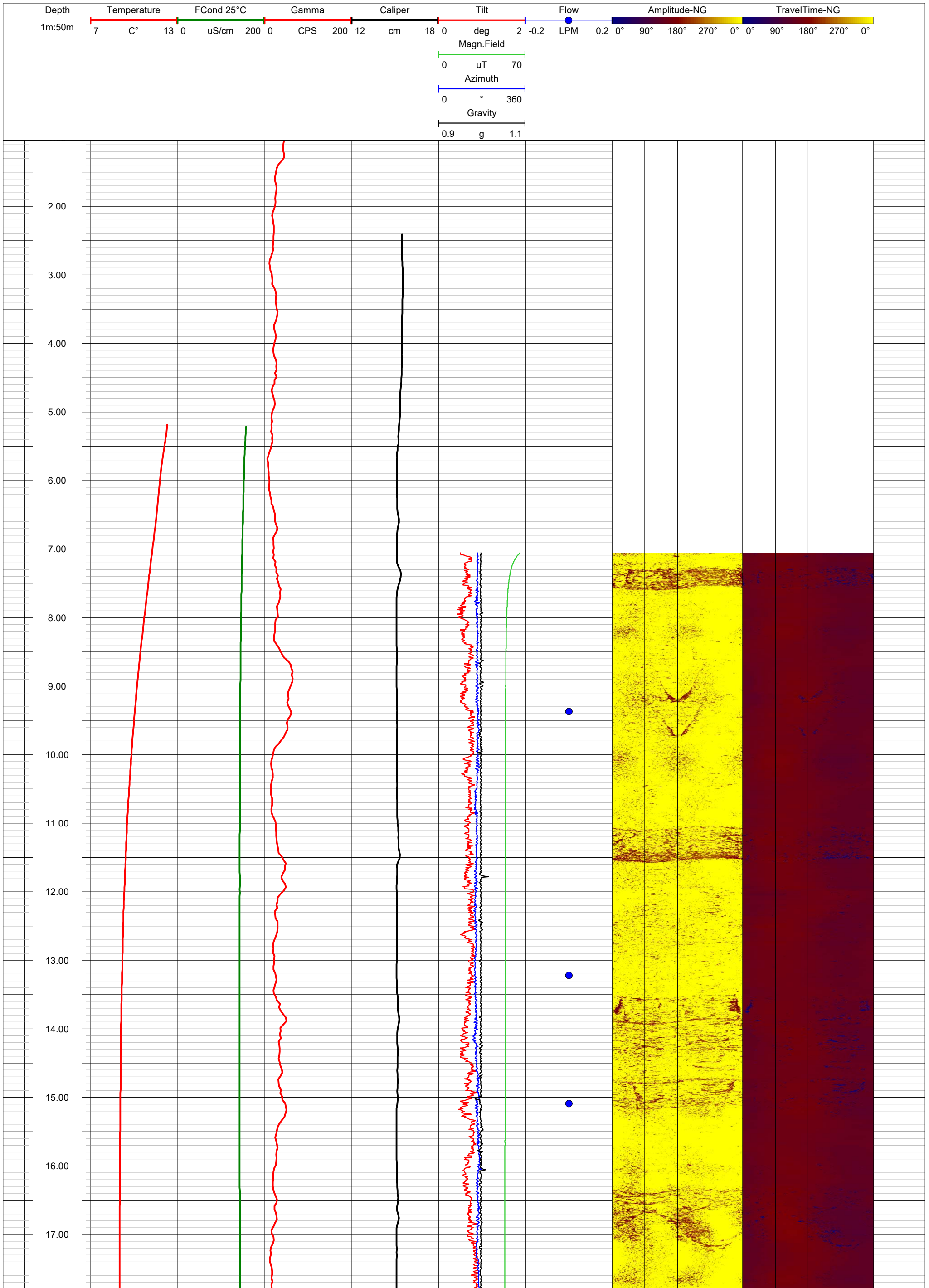
Borehole Fluid: Water

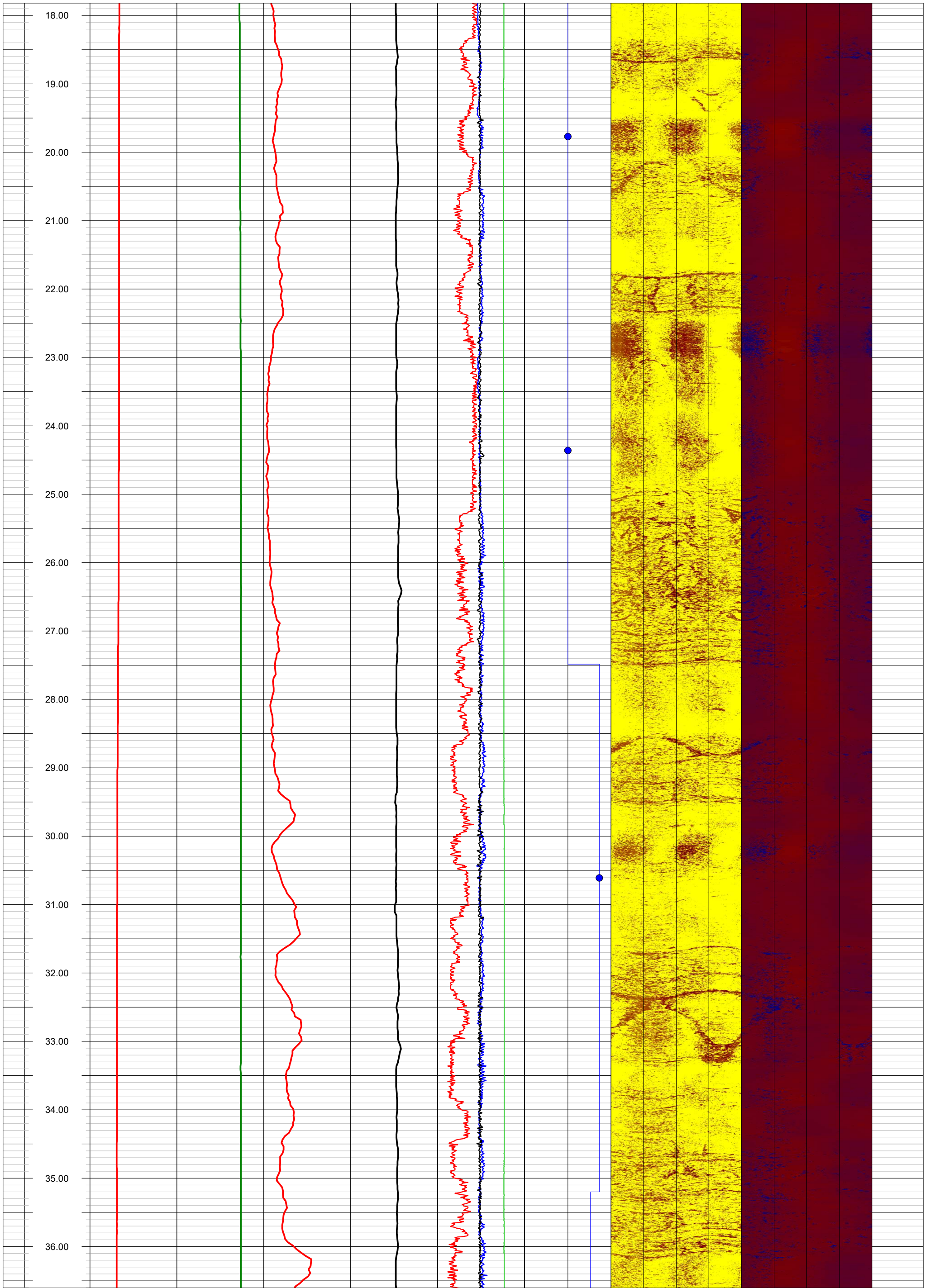
Manufacturer: Mt.Sopris

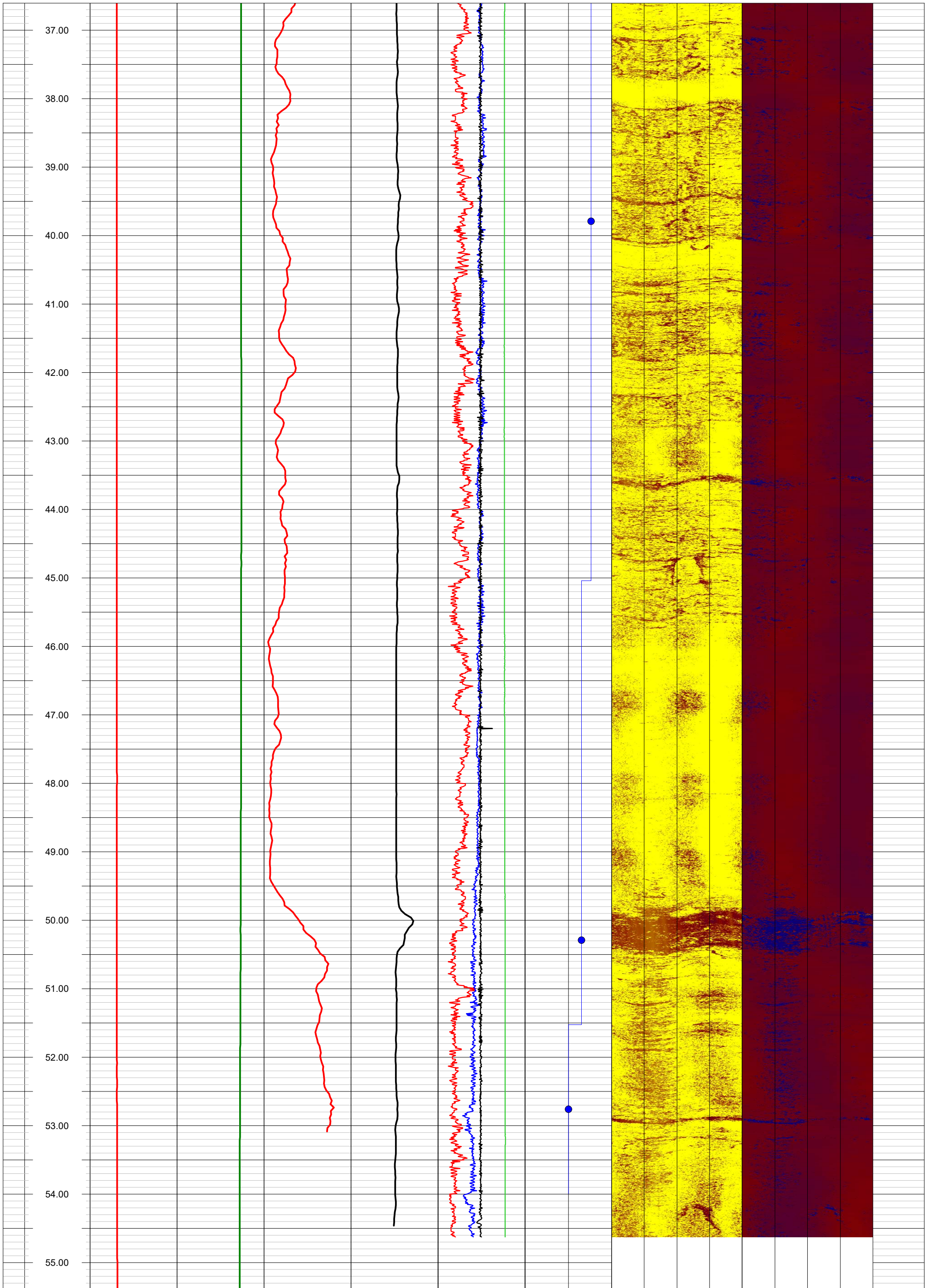
Logs and Probes: Fluid Temp/Specific Conductivity (2PFA, SN: 5113) Caliper (2PCA, SN: 5095) Gamma (2PGA, SN: 5049) Acoustical Borehole Imager (QL40-ABI, SN: 121902) Heat Pulse Flow (HPF2293, SN: 5005)

Surficial Geology: Glacial deposit

Bedrock: Bascom Formation







	56.00																			
	57.00																			