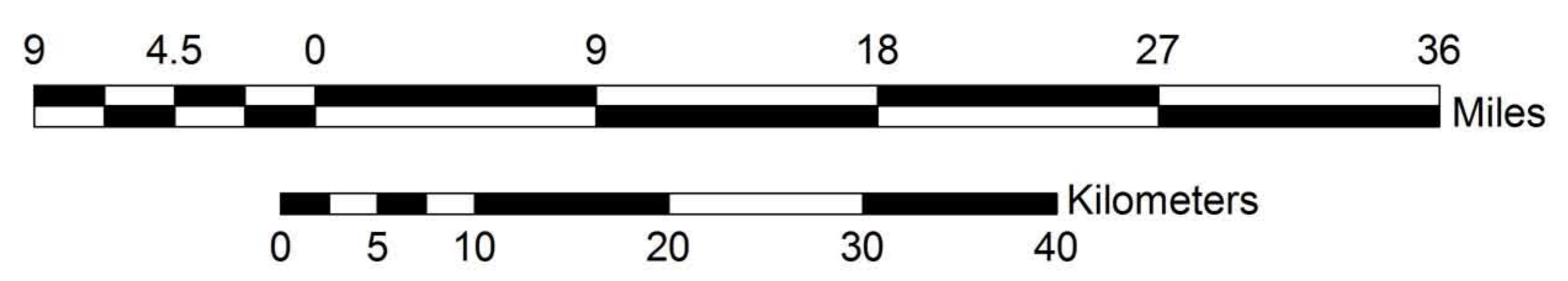


Legend

- Igneous Rocks - Plutonics, Volcanics and Dikes
- State Boundary
- County Boundary
- Lakes/Ponds
- Town Boundary

Igneous rocks range in age from Devonian to Lower Cretaceous and include the Devonian New Hampshire Plutonic Suite and the Jurassic to Early Cretaceous plutons and dike swarms of the White Mountain Igneous Suite,



**Distribution of Igneous Rocks
on the 2011 Bedrock Geologic Map of Vermont**