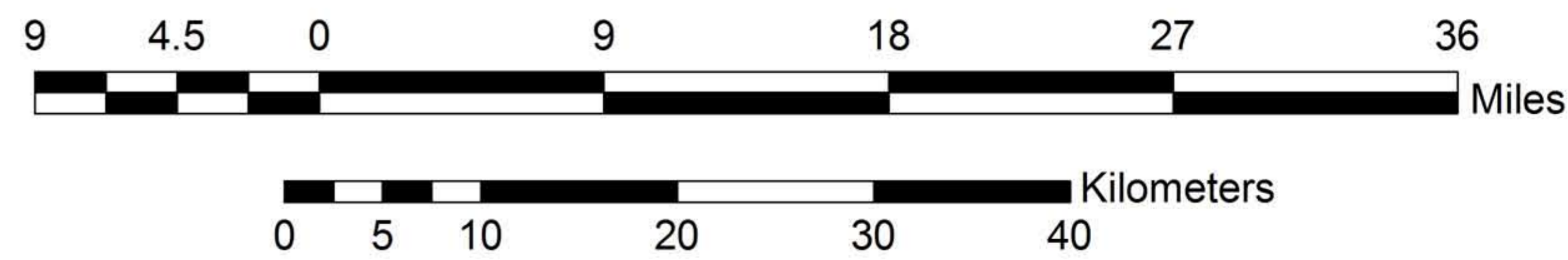


**Legend**

-  County Boundary
-  Lakes/Ponds
-  Town Boundary
-  Igneous Rocks - Plutonics, Volcanics and Dikes
-  Sedimentary Rocks
-  Metamorphic Rocks



Distribution of Igneous, Sedimentary, and Metamorphic Rocks on the 2011 Bedrock Geologic Map of Vermont