

Description of Map Units

Ottauquechee Formation

- Co** Graphitic and rusty phyllite; dark quartzite; phyllitic granofels.
- Copg** Silvery green to white phyllitic granofels.
- Cofb** Black and rusty quartzose phyllites interlayered with silvery green quartzose phyllites.

Jay Peak Formation

- CZj** Silvery green to bluish black, lustrous, quartzose phyllites.

Hazens Notch Formation

- CZhn** Rusty, graphitic, quartz-muscovite-chlorite-black albite porphyroblast schist; black, white, or gray albites.

Fayston Formation

- CZf** Silvery green quartz-chlorite-muscovite-albite porphyroblast schist.

Other Units (Cambrian)

- g** Dark green chlorite-albite-epidote-dolomite greenstone.
- ag** Pale green actinolite-epidote greenstone.
- m** Marble.
- tc** Talc (may include magnesite and serpentine).

Description of Map Symbols

	Green Mountain Anticlinorium Fold Axis		Mine
	Thrust Fault		Lakes/Ponds
	Outcrop Locations		Rivers/Streams
	USGS 24K Quad Boundaries		Town Boundary

Linear Features (Relative Age)	Planar Features (Relative Age)

Coordinate System: Vermont State Plane, Meters, NAD 83.
 Grid Overlay: UTM Zone 18N, NAD 83.
 LIDAR basemap from Vermont Center for Geographic Information.

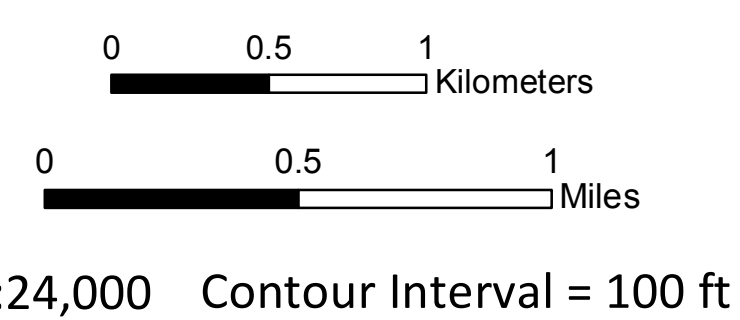
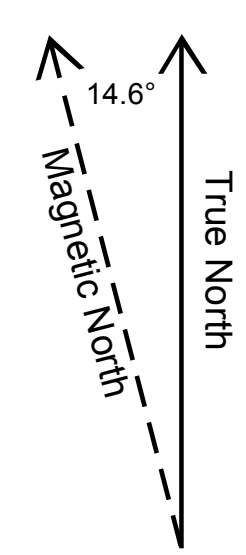
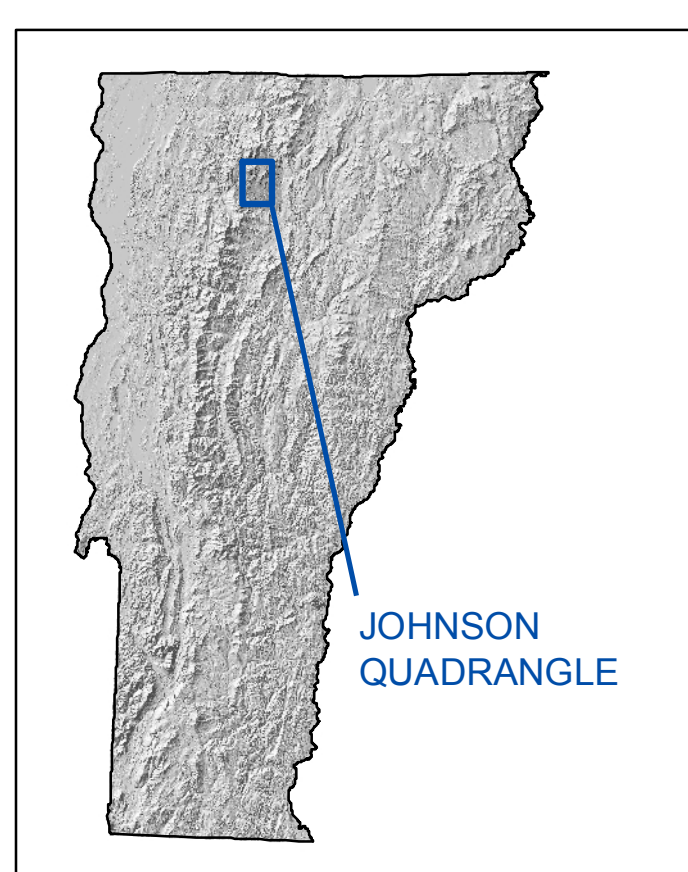
BEDROCK GEOLOGIC MAP OF THE JOHNSON 7.5 MINUTE QUADRANGLE, VERMONT

by

Peter J. Thompson and Thelma B. Thompson

Vermont Geological Survey Open File Report VG98-2

Digitization and digital cartography: Colin Dowey, Jon Kim, Laura Cadmus.



Published by:
 Vermont Geological Survey
 Department of Environmental Conservation
 Agency of Natural Resources
 1 National Life Drive, Main 2
 Montpelier, VT 05620-3902
<http://dec.vermont.gov/geological-survey>
 Reformatted 2017

Research supported by the Vermont Geological Survey, Dept. of Environmental Conservation, VT ANR. This geologic map was funded in part by the USGS National Cooperative Mapping Program. The views and conclusions contained in this document are those of the authors and should not be interpreted as necessarily representing the official policies, either expressed or implied, of the U.S. Government.