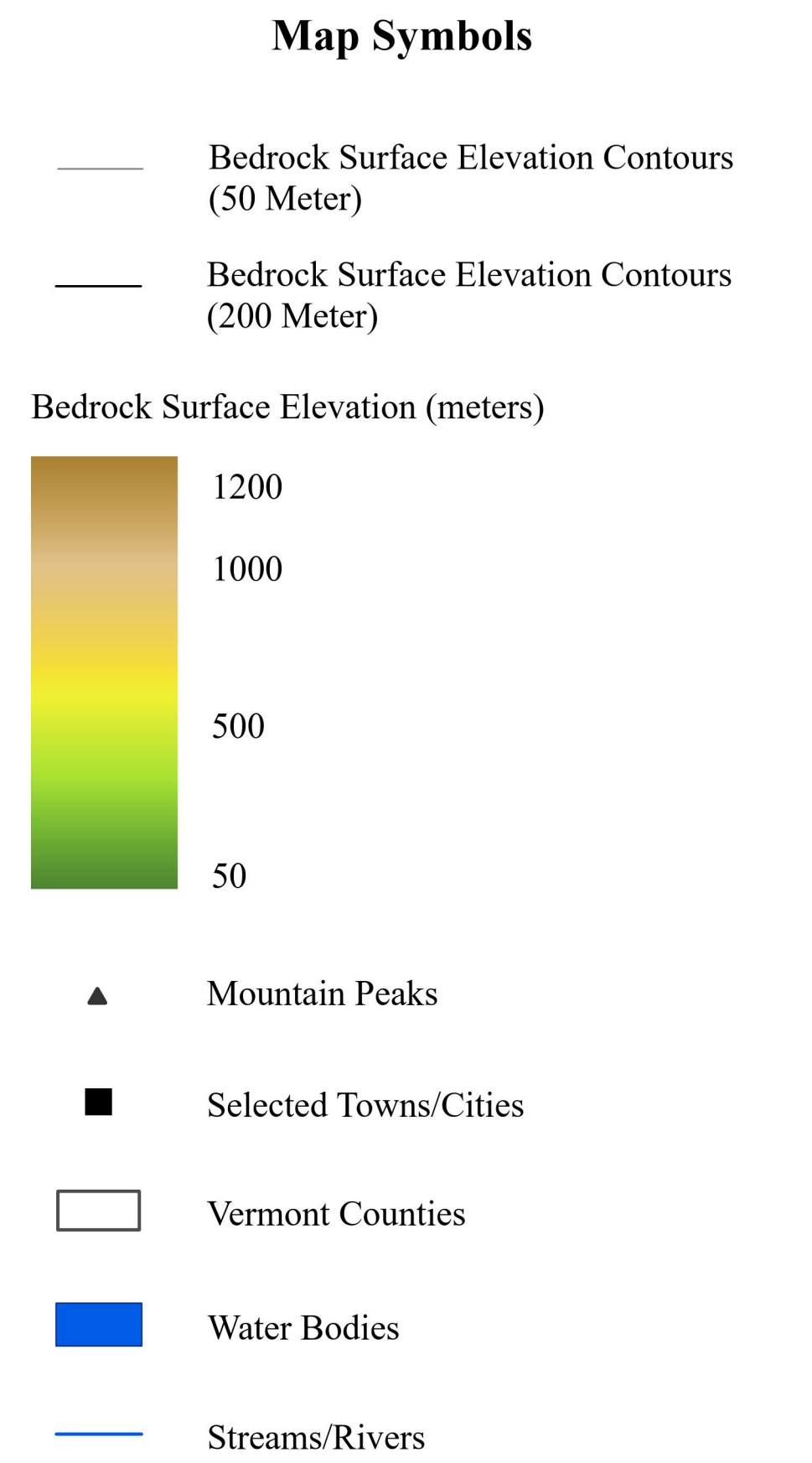
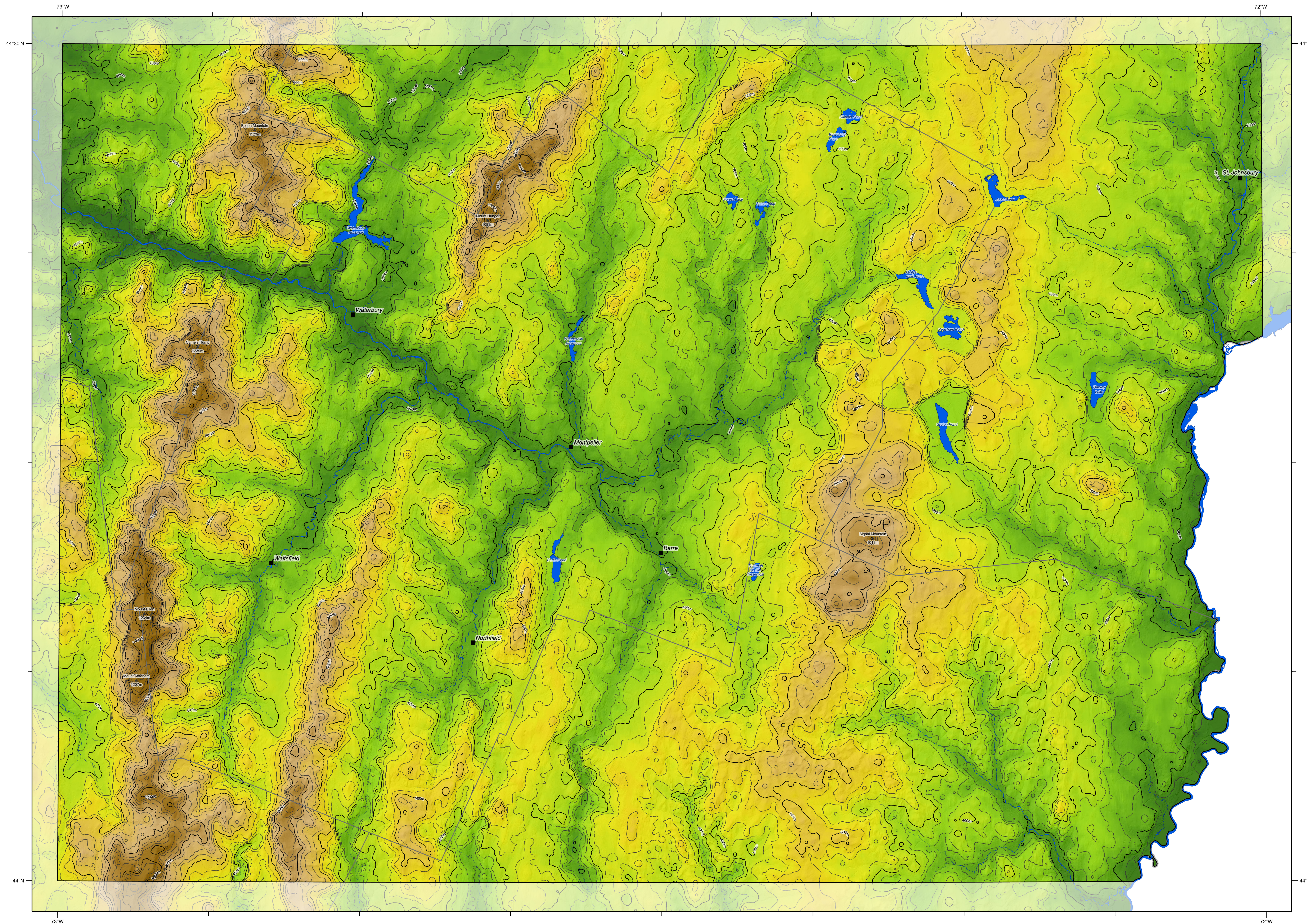
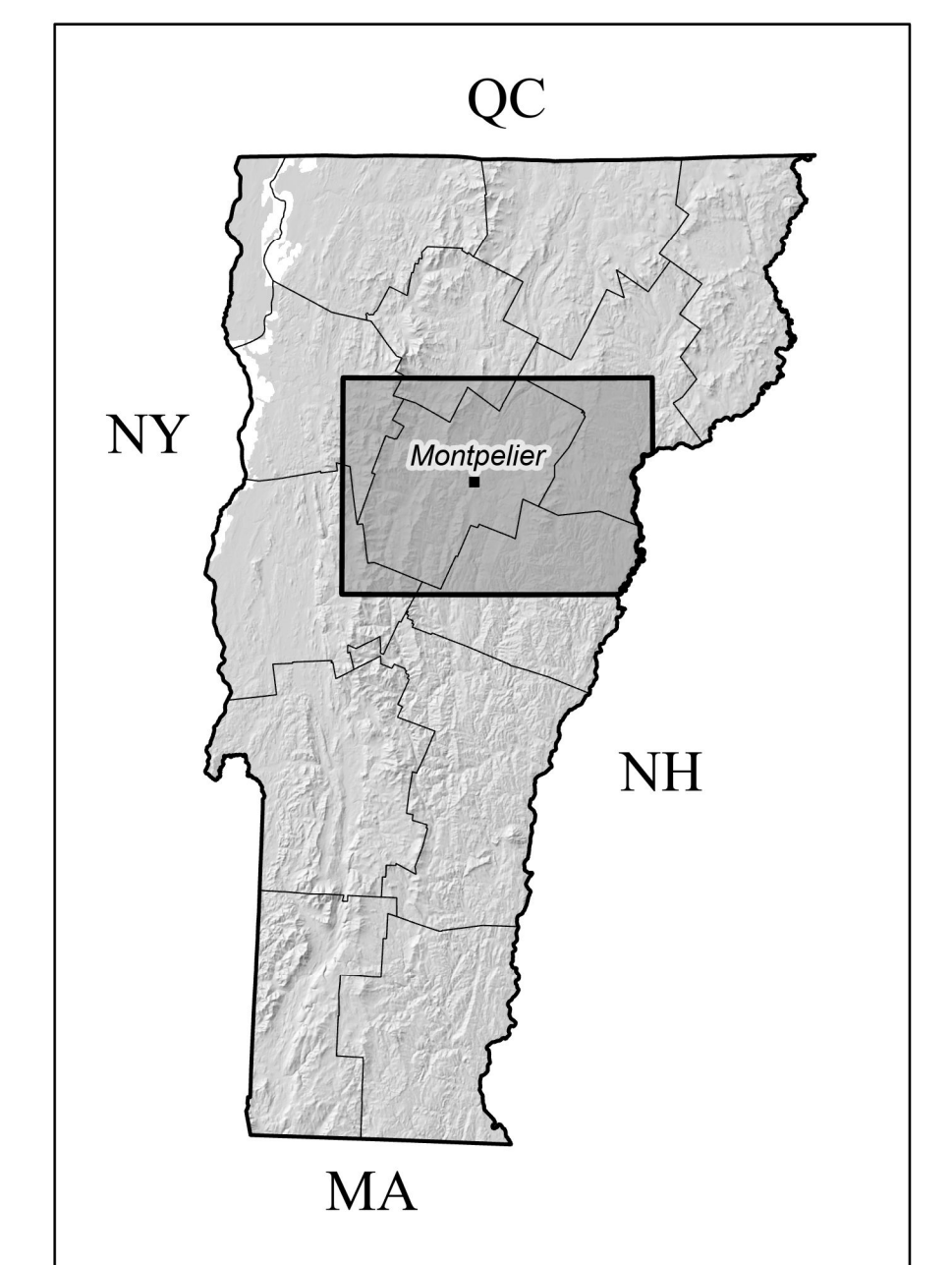


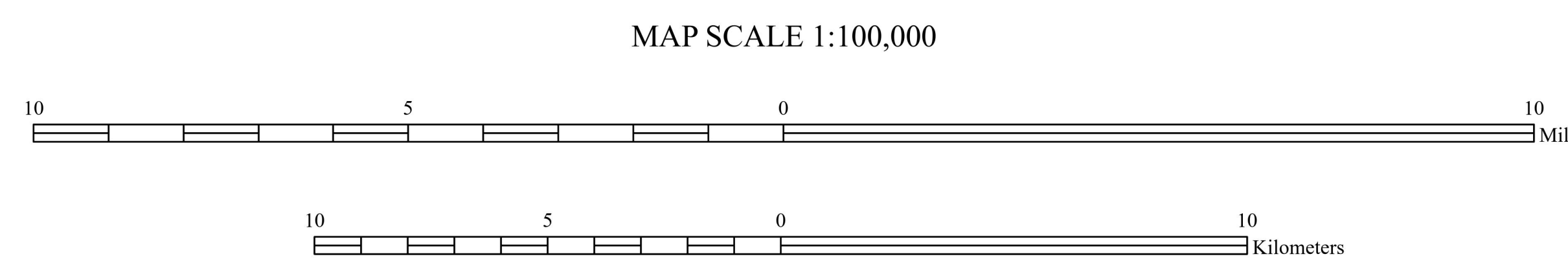
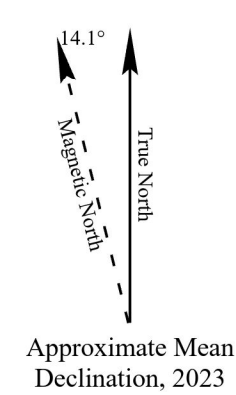
Bedrock Surface Elevation Map of the Montpelier 1:100,000 Quadrangle, Vermont



This map is derived from a compilation of bedrock outcrops, shallow bedrock as interpreted from LIDAR, water well data, borings, and exposures of surficial materials.



Published by:
Vermont Geological Survey
 Benjamin D. DeJong, State Geologist
 Department of Environmental Conservation
 Agency of Natural Resources
 1 National Life Dr., Davis 4
 Montpelier, VT 05620
<http://dec.vermont.gov/geological-survey>



By
George E. Springston
 2024

Map Citation:
 Springston, G.E., 2024, Bedrock Surface Elevation Map of the Montpelier 1:100,000 Quadrangle, Vermont:
 Vermont Geological Survey, 1 map sheet (PDF) and digital database.

LIDAR Base from Vermont Center for Geographic Information
 Projected Coordinate System:
 NAD 1983 2011 StatePlane Vermont FIPS 4400

Department of Earth and Environmental Sciences, Norwich University, Northfield, VT