

Slope Instability Features

- ▲ Landslide
- ▲ Mass Failure = Landslide
- ◆ Landslide-Gully Complex
- × Gully
- Gully Head
- ⊕ Talus
- CaledoniaCounty
- Glacial Lake Winooski
- Glacial Lake Hitchcock
- Town Boundaries
- Interstates
- Major Roads
- Minor Roads
- Streams
- Water Bodies

Percent Slope

<VALUE>

- 2.4 - 4
- 4.1 - 8
- 8.1 - 16
- 16.1 - 33
- 33.1 - 50
- 50.1 - 72.7
- 72.8 - 100
- 100.1 - 1,334.6

Definitions:

Landslide. A landslide is a feature formed by the downslope movement of rock and soil under the effects of gravity. The term includes a wide variety of falls, slides, and flows. They are identified by the presence of steep slopes and/or evidence of soil movement and surface erosion. Most are adjacent to streams. Features below 4 meters in height are not mapped. The mass failures identified during stream geomorphic assessment studies are landslides.

Gully. A steep, narrow stream channel incised into surficial deposits. The stream is commonly a first-order stream and the flow in the bottom is usually intermittent. Unstable gullies have very steep sides and commonly show signs of fresh erosion in the bed and/or at the gully heads.

Gully head. The upstream tip of a gully. One gully may have several gully heads.

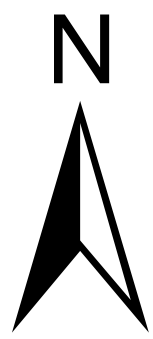
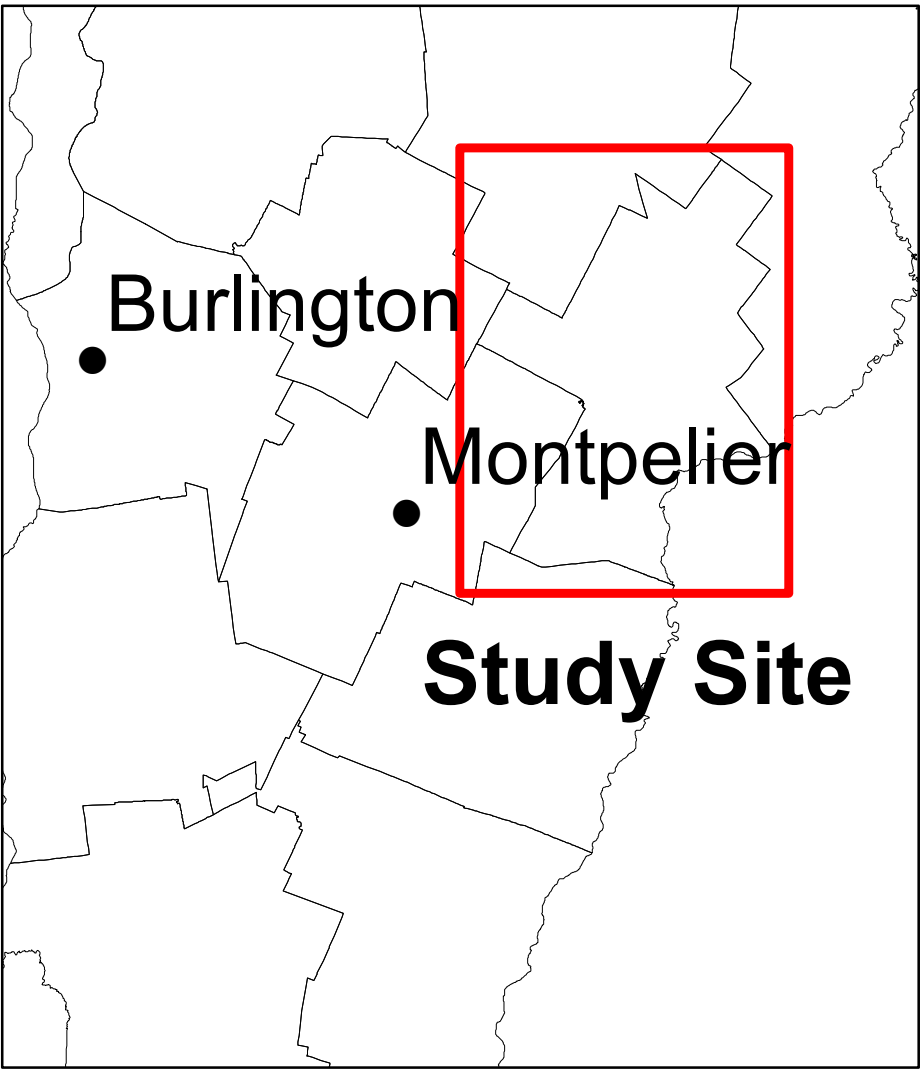
Landslide-gully complex. A gully with substantial landslides on the sides or at the head.

Talus deposit. Fan or apron of fallen blocks of rock at the base of a cliff.

Coordinate System: Vermont State Plane, FIPS 4400, NAD 83. Geographic coordinates shown at topo corners are in NAD 83. Base map data from the Vermont Center for Geographic Information (VCGI). Slope data derived from 0.7 m lidar DEM from VCGI.

Digital cartography by George Springston, Norwich University, Dept. Earth and Environmental Sciences, March 26, 2021.

Published by:  
Vermont Geological Survey, Dept. of Environmental Conservation  
Jonathan Kim, Acting State Geologist  
1 National Life Dr., Montpelier, VT  
802-522-5401  
<http://dec.vermont.gov/geological-survey>



Scale 1:75,000

Kilometers

0 2 4 6 8 10