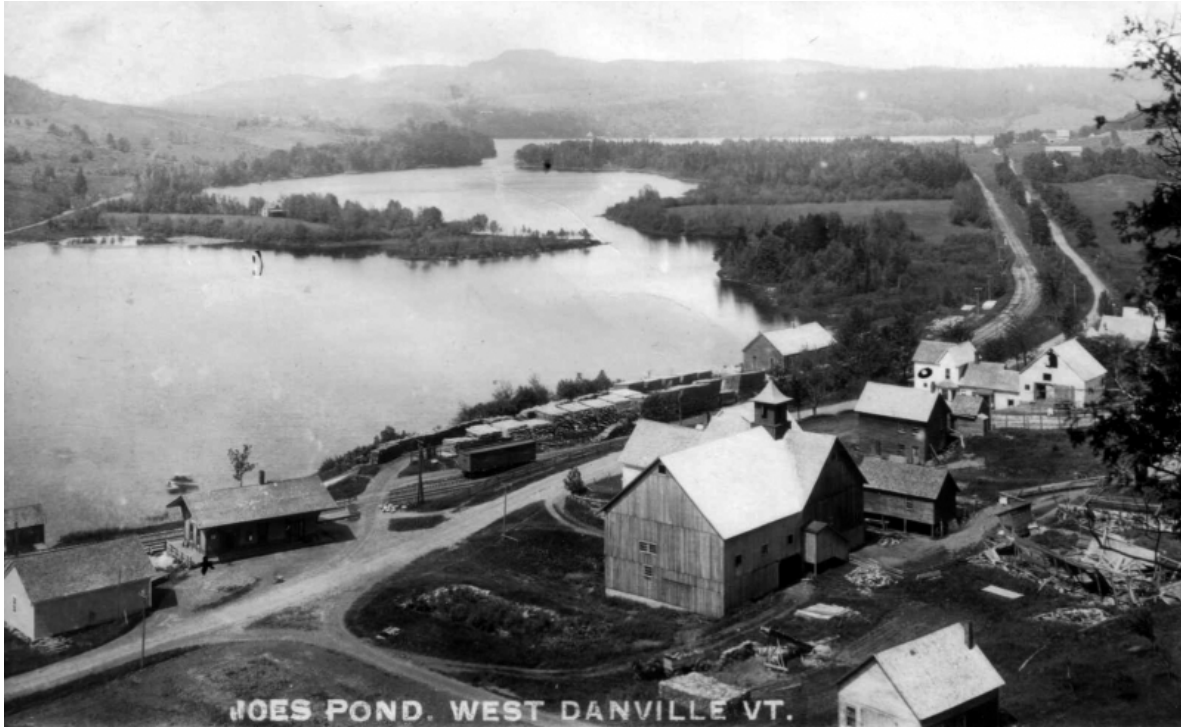


Surficial Geology of the Joes Pond 7.5 Minute Quadrangle, Vermont



George Springston
Norwich University Department of Earth and Environmental Sciences
108 Harmon Drive
Northfield, VT 05663
802-485-2734
gsprings@norwich.edu

May 29, 2017

Prepared With Support From
Vermont Geological Survey, Dept. of Environmental Conservation
1 National Life Dr., Davis 2, Montpelier, VT 05620-3902



On the cover: View looking west from West Danville across Joes Pond in 1913. Note the two sets of peninsulas that cut across the pond. These are interpreted as being moraine crests. Photo LS03800_000 from Vermont Landscape Change Program. Original from collection of Fairbanks Museum, St. Johnsbury.

Table of Contents

	Page
Executive Summary	4
Introduction	5
General Surficial Geology	5
Prior Work	5
Methods	11
Surficial Geology	11
Ice-movement Indicators	11
Stratigraphy	12
Pleistocene Deposits	12
Moraines	15
Meltwater Channels	16
Holocene Deposits	16
Future Work	17
Summary	17
Acknowledgements	18
References	18
Plates	
1. Surficial Geologic Map	

Executive Summary

The purpose of this project was to conduct 1:24,000 scale mapping of the surficial geology of the Joes Pond 7.5 minute quadrangle. This will be used as a basis for an upcoming groundwater resources study of the quadrangle.

Glacial till is the most widespread surficial material in the study area. It is generally dense to very dense, unsorted to very poorly sorted, fine-sandy-silt to silt matrix till. Exposures of fine-sand- to medium-fine-sand matrix till were encountered, mostly in the south-central portion of the quadrangle to the southeast of Joes Pond, in the vicinity of Keiser Pond and Harvey Hollow.

Anomalously thick till (> 30 meters or 100 feet) was encountered in two areas. These are in the northeastern portion of the quadrangle on the east flank of the Kittredge Hills and in the southwestern portion of the quadrangle to the southwest of Mollys Pond.

Striations and grooves in bedrock indicated that ice motion directions ranged from 155 to 181°. As in the Cabot quadrangle immediately to the west, striations and grooves were uncommon, especially when compared to the Woodbury quadrangle further west.

No evidence in support of the Danville Moraine of Stewart and MacClintock (1969) was found during this mapping. Where examined, the areas that had been mapped as moraine were generally thin till. Bedrock outcrops were common in these areas.

Although no evidence was found of the Danville Moraine, there is evidence of small ridges of till that appear to be moraines within and near Joe's Pond. The two most prominent examples are the two pairs of peninsulas that extend most of the way across Joe's Pond.

Ice-contact deposits are relatively sparse in the study area. Where seen, they consist of unsorted to poorly-sorted sand, gravel, and silt deposited in contact with glacial ice. Deformation features are common. A large but poorly-exposed area of ice-contact sand and gravel is located to the southeast of Joe's Pond. Although an earlier interpretation suggests a kame terrace, the origin of this deposit is uncertain.

A better-exposed set of ice-contact deposits is seen in the northeast of the study area at Pierce's Pit. Materials include deformed, bedded, pebble gravel, pebbly sand, medium to fine sand, and silt. The topographic form suggests a pair of kames.

Introduction

The study area is located in Washington and Caledonia Counties in northeastern Vermont on the Joes Pond 7.5 minute quadrangle (Figure 1). The area is ~53 square miles and includes parts of the towns of Cabot, Danville, Peacham, and Walden. The study area includes the southwestern portion of the USGS Sleepers River Research Watershed (SRRW).

The bedrock consists mostly by the Silurian to Devonian Waits River Formation and the Devonian Gile Mountain Formation, with the exception of an area in the southwest that is underlain by Devonian biotite granite (Figure 2, after Ratcliffe and others, 2011).

The Joes Pond quadrangle is located in the Vermont Piedmont physiographic province (Stewart and MacClintock, 1969). The terrain is generally rolling (Figures 3 and 4), with the steep east faces of the Kittredge Hills standing as exceptions. The stream network is shown in Figure 5. Most of the quadrangle (including the SRRW) is within the Passumpsic River watershed. A small portion in the south-central part of the study area is within the Stevens River watershed. The Passumpsic and the Stevens drain into the Connecticut River watershed. The southwestern corner of the study area is within the Winooski River watershed and the northwestern portion is within the Lamoille River watershed. The Winooski and Lamoille drain into Lake Champlain. Typical views of the landscape are shown in Figures 4 and 5.

General Surficial Geology

The surficial materials in the region are dominantly of glacial origin and were deposited in the late Pleistocene while the area was covered by the Laurentide ice sheet and during and shortly after the retreat of that ice. Typical of most of New England, the upland areas are covered by till that varies considerably in thickness, composition, and texture. Local glacial erratics are common. Large areas of the uplands consist of thin till and bedrock and many of the first-order streams have cut down to bedrock. Till in the stream valleys may be overlain by a variety of ice-contact sediments deposited during ice retreat. In much of the region, these in turn are overlain by sediments deposited in proglacial lakes. The present study area, however, is outside of the extents of the large regional proglacial lakes (glacial Lake Winooski to the west and glacial Lake Hitchcock to the east). The modern valley bottoms are also the sites of Holocene stream terrace and modern alluvial deposits. Small talus accumulations are seen at the bases of cliffs and colluvial (slope-wash) deposits are common on the lower portion of steep slopes.

Prior Work

Early reconnaissance surficial mapping within the Saint Johnsbury 15-minute quadrangle by David P. Stewart as reported by Stewart and MacClintock (1969) and shown on Doll (1970). This mapping delineated an extensive moraine complex (Danville Moraine) that extends across the quadrangle from southeast to northwest (Figure 5). Moore and Hunt (1970) studied the modern bottom sediment patterns of Joe's Pond. Mapping by Springston and Haselton (1999a and b) to the east of the study area casts doubt on the existence of this moraine. The investigation of the Danville Moraine will be a major focus of the mapping. A wide-ranging study of the surficial geology of the Passumpsic River watershed, which makes up the northeastern quarter of the quadrangle, was undertaken by Newell (1970). The surficial geology of the St. Johnsbury 7.5 minute quadrangle, located to the east of the Joes Pond quadrangle, was mapped by Springston and Haselton (1999a and b). The USGS has undertaken a number of soil borings to determine depth to rock in the SRRW (Jamie Shanley, USGS, personal communication, Oct., 2012).

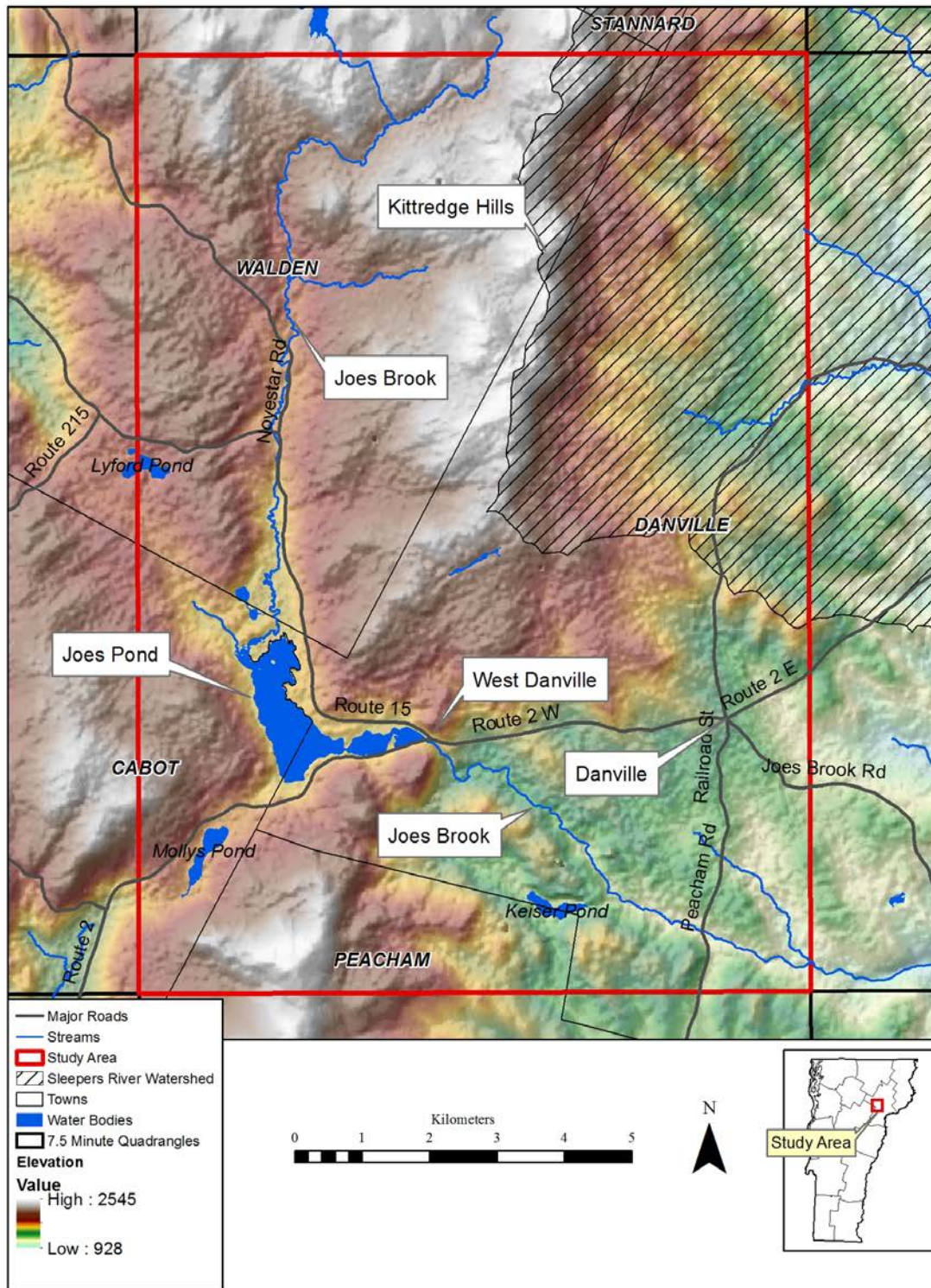


Figure 1. Location map.

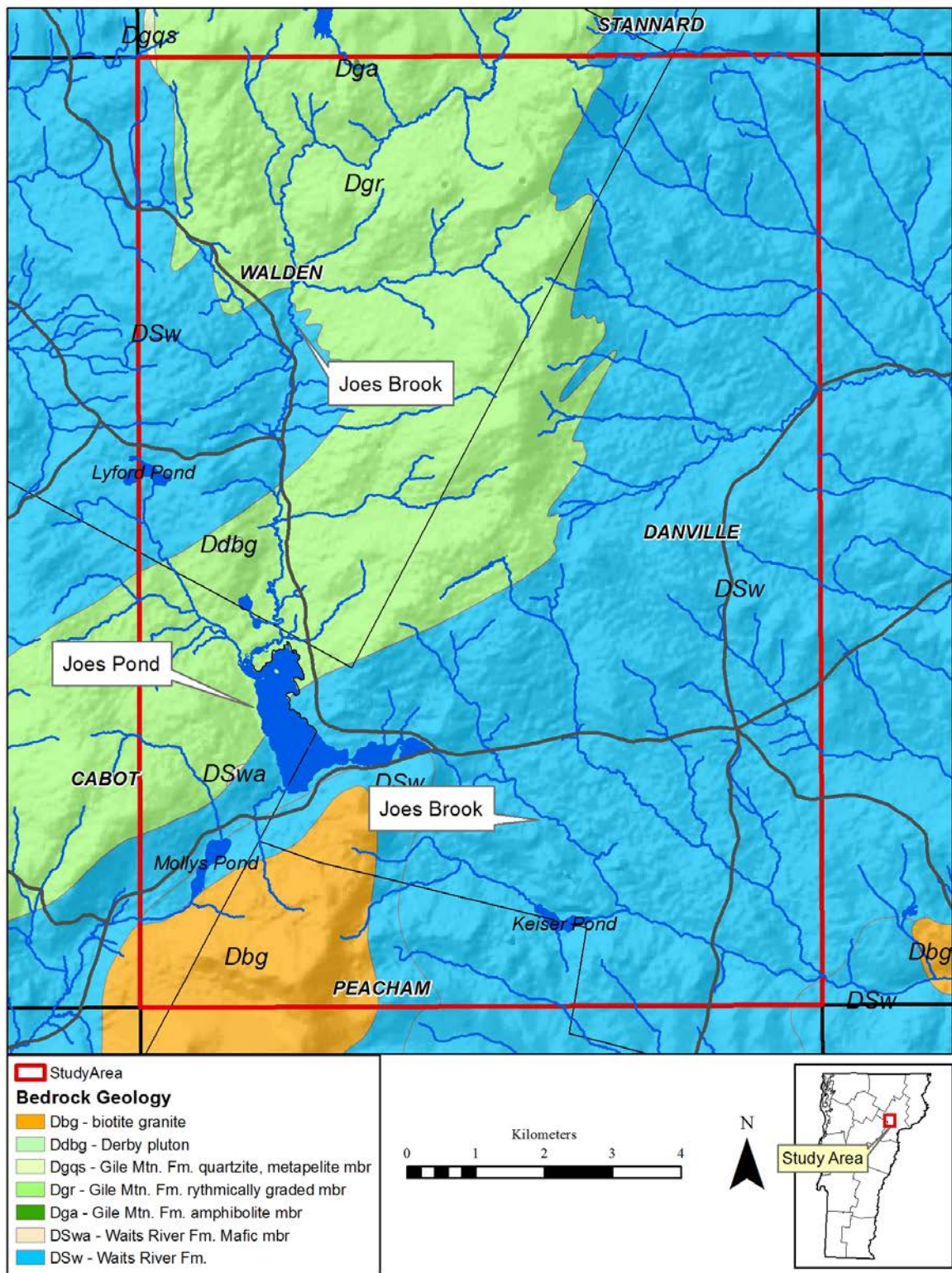


Figure 2. Bedrock geology (after Ratcliffe and others, 2011).



Figure 3. View looking northeast over the Sleepers River watershed from Coles Pond Road in the northeastern portion of the study area.



Figure 4. View of rolling hills of the Sawyer Brook valley in south-central part of study area. Taken from Barber Farm on Deweyburg Road looking northeast.

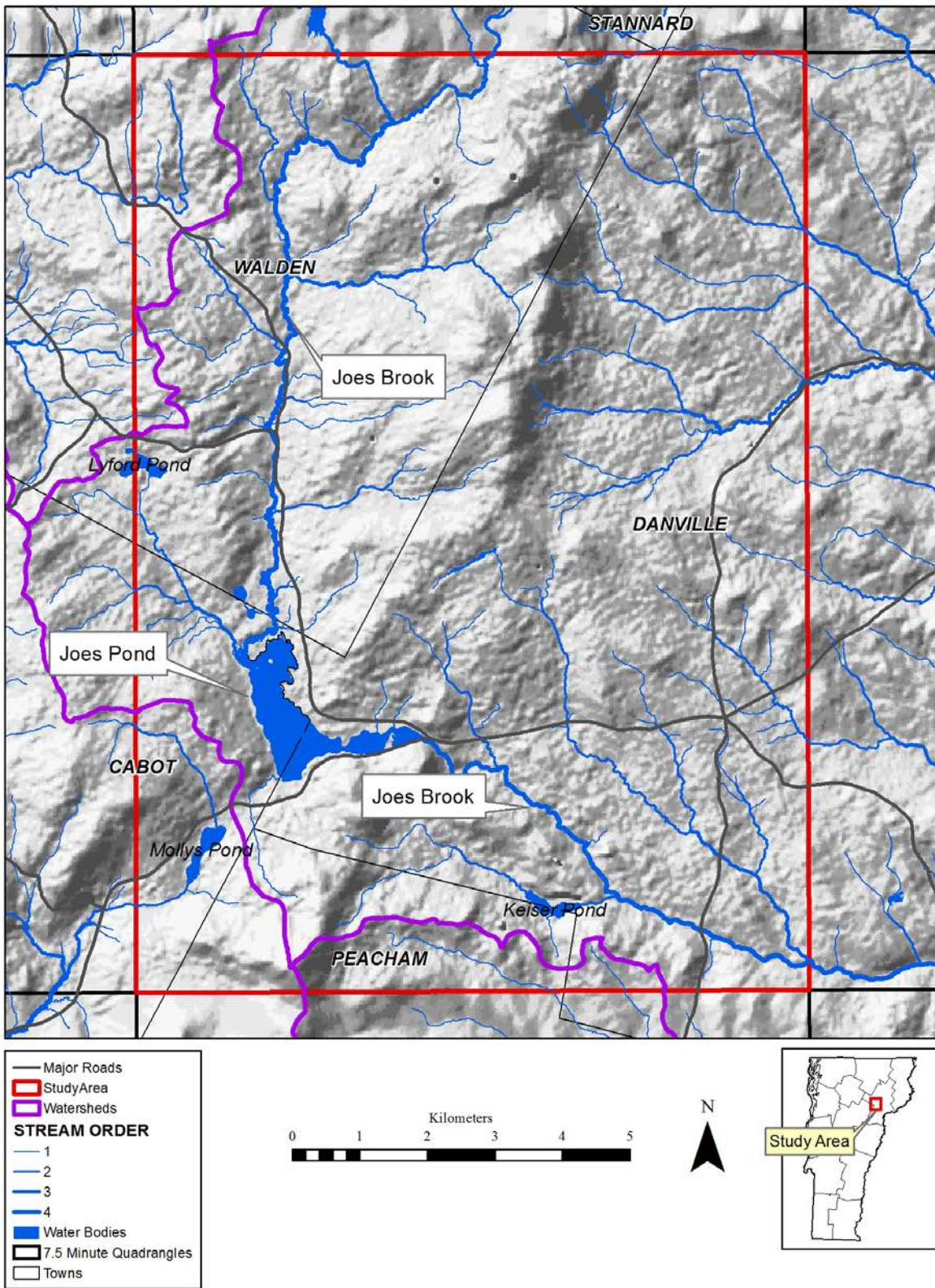


Figure 5. Watersheds and stream network.

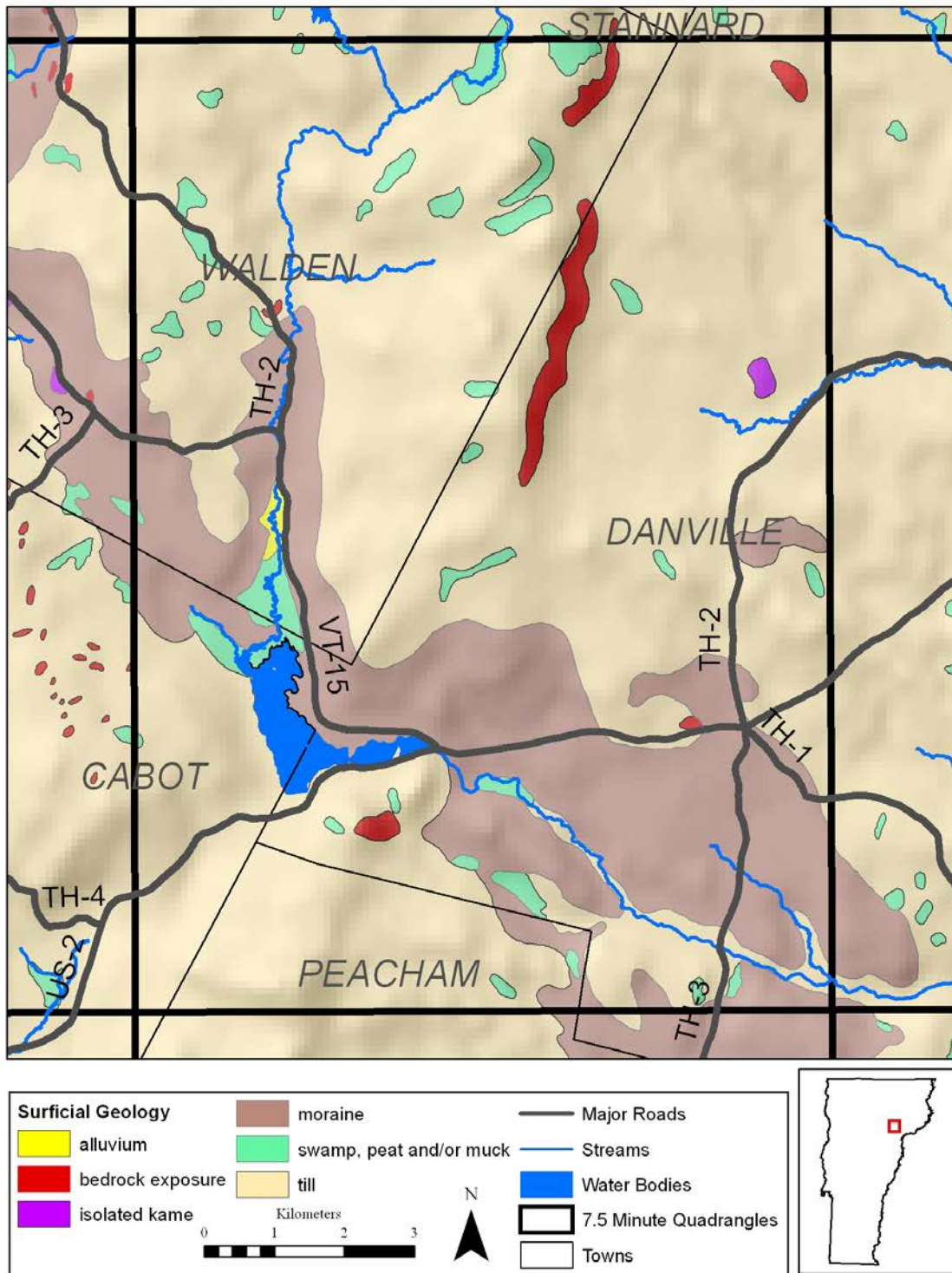


Figure 6. Reconnaissance surficial geology of the Joes Pond quadrangle, after Doll (1970). Based on 1:62,500 mapping by David P. Stewart. See discussion in text of the area shown as moraine.

Methods

Field work involved visits to 301 exposures of surficial deposits and 141 bedrock outcrops. The locations of approximately 300 bedrock outcrops were obtained from Hall (1959). Additional surficial geologic information was obtained by analysis of 102 water well logs. The logs were derived from databases managed by the Drinking Water and Groundwater Protection Division of the Vermont Department of Environmental Conservation. The water well locations are shown on Plate 1. As many of the older wells have uncertain locations, only wells with verified locations are used in this analysis. Newer wells with driller-reported GPS locations or E911 addresses are assumed to be close to the correct locations. Additional boring logs were obtained from the Vermont Agency of Transportation and from State records of hazardous waste sites. Descriptions of sand and gravel resources from 22 sites were obtained from Highway Materials Studies undertaken by the Vermont Agency of Transportation. All of the above are also shown on Plate 1.

Surficial Geology

Ice-movement Indicators

Striations and grooves in bedrock indicated that ice motion directions ranged from 155° to 181° . A typical example is shown in Figure 7. As in the Cabot quadrangle immediately to the west, striations and grooves were uncommon, especially when compared to the Woodbury quadrangle further west. No cross-cutting relationships were observed in this study area, but in the Woodbury quadrangle at station WO872 the 194° striations cross-cut the 164° striations and are thus younger. In the St. Johnsbury quadrangle at station SJ-60, Springston and Haselton (1999a) found excellent striae, which indicate that striae with a maximum of 185° cross-cut striae with a maximum of 135° . This relationship has been seen at many other sites in the region and Wright (2015) has interpreted this to suggest an earlier regional ice flow trending roughly 160° with a later more southerly re-orientation of flow.



Figure 7. Glacial striations on phyllite outcrop. Compass and pencil parallel to striations oriented 159° . In northwest of study area on Old Duke Road, Station JP866.

Stratigraphy

Pleistocene Deposits

The Pleistocene deposits are greater than about 12,000 years old. Although the Pleistocene epoch extends back to between 1.8 million and 2.58 million years, all of the glacial deposits in the study area are believed to belong to the last stage of the Pleistocene, the Wisconsinan Glacial Stage, which extends from about 71,000 to 12,000 years before present.

Till in the study area is generally dense to very dense, unsorted to very poorly sorted, fine-sandy-silt to silt matrix till. Munsell color of relatively unweathered samples is commonly 5Y3/1 to 5Y3/2, but deep, unweathered samples range from N3/0 to N4/0. Surface boulders are common. Thickness of the till is highly variable, from less than 3 meters to greater than 30 meters. The areas mapped as till include small areas of talus (fans or aprons of fallen rock at the bases of cliffs) and colluvium (slope-wash deposits on the lower portions of slopes). Exposures of fine-sand- to medium-fine-sand matrix till were encountered, mostly in the south-central portion of the quadrangle to the southeast of Joes Pond, in the vicinity of Keiser Pond and Harvey Hollow. There, the sandy till is moderately loose and reddish brown (10YR3/2). Individual exposures of the sandy till are shown by symbols.

Anomalously thick till was encountered in two areas. These are in the northeastern portion of the quadrangle on the east flank of the Kittredge Hills and in the southwestern portion of the quadrangle to the southwest of Mollys Pond. Figures 8 and 9 show a thick exposure of the dense, unweathered silt till at site JP602. Figures 10 and 11 show a much more weathered till at site JP1, also with a silt matrix. Although the clast compositions appear superficially similar, it is unclear whether or not the till at site JP1 is simply a weathered version of the till at site JP602.



Figure 8. Exposure of dense silt till in landslide on Morrill Brook, Station JP602.



Figure 9. Closeup of freshly eroded dense silt till at Station JP602.



Figure 10. Excavation in weathered silt till at Site JP1, southwest of Keiser Pond. The material is weathered to a depth in excess of 2 meters.



Figure 11. Closeup of weathered silt till at Site JP1, southwest of Keiser Pond. Weathered clasts of phyllite and sandy marble are easily scraped with a trowel.

Ice-contact deposits are relatively sparse in the study area. Where seen, they consist of unsorted to poorly-sorted sand, gravel, and silt deposited in contact with glacial ice. Deformation features are common. A poorly-exposed area of ice-contact sand and gravel is located to the southeast of Joe's Pond. The Highway Material Survey interpreted these materials as being part of a kame terrace. Due to lack of exposure, the origin remains obscure.

A better-exposed set of ice-contact deposits is seen in the northeast of the study area at Pierce's Pit. Materials currently exposed include deformed, bedded, pebbly sand, medium to fine sand, and silt. The Highway Materials Survey reports pebble gravel as well. Figure 12 shows soft-sediment deformation in the deposit. The topographic form suggests a pair of kames.



Figure 12. Ice-contact sediments from kame deposit. Medium sand overlying fine sand and silt showing soft-sediment deformation. From Pierce's Pit, located south of Morrill Road at Station SJ95.

Moraines

As discussed in Larsen and others (2003), there is substantial evidence in central Vermont for a late Wisconsinan readvance, which appears to correlate with the Bethlehem-Littleton readvance in New Hampshire (Thompson and others, 2017). More recent discoveries of thick dense till over lacustrine sediments at several locations in Washington County support this interpretation (Dunn and others, 2011; Dunn and others, 2015). Thick deposits in some of the valleys are reminiscent of till-over-lacustrine sequences seen in nearby areas, but no clear evidence of a readvance was found during this study.

Early reconnaissance surficial mapping within the St. Johnsbury 15-minute quadrangle by Paul MacClintock is reported by Stewart and MacClintock (1969) and shown on Doll (1970). This mapping delineated an extensive moraine complex (Danville Moraine) that extends across the quadrangle. Mapping by Springston and Haselton in the St. Johnsbury 7.5 minute quadrangle (1999a and b) to the east of the study area casts doubt on the existence of this moraine. No evidence in support of the moraine was found during this mapping. On the contrary, where examined, the areas that had been mapped as moraine were generally thin, dense, silt-matrix till. Bedrock outcrops were common in these areas. In the village of Danville itself, which lies within Stewart and MacClintock's Danville Moraine, waterline excavations in 1998 and a variety of subsequent borings reveal that the village is underlain by till that is generally less than 10 feet thick. The depth to bedrock along part of the water line laid parallel to Rt. 2 in front of the High School was so shallow that blasting was required.

Although we have not found evidence of the extensive Danville Moraine, there is evidence of smaller ridges of till within and near Joe's Pond. Features that may be similar have been seen in the Knox Mountain area to the southwest (Springston and Kim, 2008). The two most prominent examples are the pairs of peninsulas that extend most of the way across Joe's Pond. These are indicated on Plate 1 and

shown in the photo from 1913 below. Water well logs and limited field observations indicate that these ridges are underlain by thick till. Several less definite examples can be seen in the vicinity.

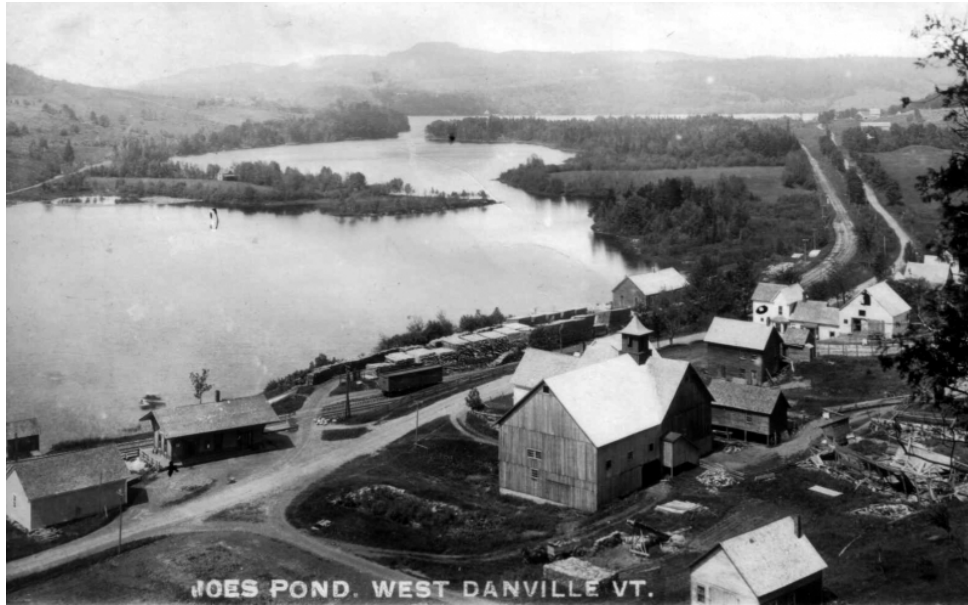


Figure 13. View looking west from West Danville across Joes Pond in 1913. Note the two sets of peninsulas that cut across the pond. These are interpreted as being moraine crests. Photo LS03800_000 from Vermont Landscape Change Program. Original from collection of Fairbanks Museum, St. Johnsbury.

Meltwater Channels

Meltwater channels cut into till are seen in two areas. The first is in the east-central part of the study area to the east of Webster Hill Road. These were first encountered and described by Springston and Haselton (1999a and b). The second set is seen on the surface of the area of thick till in the southwest of the study area to the southwest of Mollys Pond.

Holocene Deposits

The Holocene deposits are described briefly below. These are less than about 12,000 years old.

Artificial Fill. Artificially-emplaced earth along road beds, embankments and in low-lying areas.

Alluvium. Silt, sand, and gravel deposited by modern streams. Deposits include stream channel and bar deposits and finer-grained floodplain deposits. Wetland deposits are common within these areas and are not distinguished. Thickness in the tributaries is typically less than 3 meters, although the depth may be much greater in the Joes Brook valley.

Wetland Deposits. Accumulations of clastic sediment and/or organic matter. Commonly includes areas of alluvium and commonly overlaying till. Only a few of the larger deposits are shown. The areas shown as wetland deposits at the north end of Joes Pond are a complex mosaic of alluvium and wetland peat or muck deposits. Thickness in the smaller wetlands is generally less than one meter, but the deposits at the north end of Joes Pond are probably considerably greater.

Wetland Deposits, Peat or Muck. Thick accumulation of organic matter with minor clastic sediment. Commonly overlaying other sediments such as alluvium, lacustrine deposits, or till. Thickness of organic horizon ranges from 0.3 meter to greater than one meter.

Stream Terrace Deposits. Silt, sand, pebble, cobble, and boulder gravel deposited on terraces above the modern floodplains of streams. They represent former floodplains that have been dissected by younger streams.

Future Work

This project will be followed by a study of the groundwater resources of the quadrangle. The groundwater study will make use of the surficial geologic data and the water well data managed by the Drinking Water and Groundwater Protection Division of the Vermont Department of Environmental Conservation.

Summary

Glacial till is the most widespread surficial material in the study area. It is generally dense to very dense, unsorted to very poorly sorted, fine-sandy-silt to silt matrix till. Exposures of fine-sand- to medium-fine-sand matrix till were encountered, mostly in the south-central portion of the quadrangle to the southeast of Joes Pond, in the vicinity of Keiser Pond and Harvey Hollow.

Anomalously thick till (> 30 meters or 100 feet) was encountered in two areas. These are in the northeastern portion of the quadrangle on the east flank of the Kittredge Hills and in the southwestern portion of the quadrangle to the southwest of Mollys Pond.

Striations and grooves in bedrock indicated that ice motion directions ranged from 155 to 181°. As in the Cabot quadrangle immediately to the west, striations and grooves were uncommon, especially when compared to the Woodbury quadrangle further west.

No evidence in support of the Danville Moraine of Stewart and MacClintock (1969) was found during this mapping. Where examined, the areas that had been mapped as moraine were generally thin till. Bedrock outcrops were common in these areas.

Although no evidence was found of the Danville Moraine, there is evidence of small ridges of till that appear to be moraines within and near Joe's Pond. The two most prominent examples are the two pairs of peninsulas that extend most of the way across Joe's Pond.

Ice-contact deposits are relatively sparse in the study area. Where seen, they consist of unsorted to poorly-sorted sand, gravel, and silt deposited in contact with glacial ice. Deformation features are common. A large but poorly-exposed area of ice-contact sand and gravel is located to the southeast of Joe's Pond. Although an earlier interpretation suggests a kame terrace, the origin of this deposit is uncertain.

A better-exposed set of ice-contact deposits is seen in the northeast of the study area at Pierce's Pit. Materials include deformed, bedded, pebble gravel, pebbly sand, medium to fine sand, and silt. The topographic form suggests a pair of kames.

Acknowledgements

Many individuals helped with the project. Thanks to Jamie Shanley and Ann Chalmers of the USGS for sharing information and insights and for accompanying me on field visits to the Sleepers River Research Watershed. Thanks to John Moore, a geologist of wide experience, for sharing his insights and knowledge regarding the moraines at Joe's Pond and for hosting an enjoyable and thought-provoking session at his camp at Joe's Pond. Thanks to Karen Deasy, Cabot Zoning Administrator, Keith Gadapee, Danville Road Foreman, and Tom Galinat, Peacham Town Clerk and Treasurer, for sharing their knowledge of their towns.

Finally, many thanks to the landowners who kindly allowed access to their properties.

References

Doll, C.G., ed., 1970, Surficial Geologic Map of Vermont, Vermont Geological Survey, Montpelier, 1:250,000.

Dunn, R.K., Springston, G.E., Hermanson, T., and Thomas, E., 2015, Interbedded subaqueous debris and turbidity flows; a thick and laterally extensive ice-proximal facies preserved in isolated proglacial basins: Geological Society of America, Northeastern Section Abstracts with Programs, v. 47, no. 3, p. 113.

Dunn, R.K., Springston, G.E., and Wright, S., 2011, Quaternary geology of the central Winooski River watershed with focus on glacial lake history of tributary valleys (Thatcher Brook and Mad River): *in* West, D.P., Jr., ed., Guidebook for Field Trips in Vermont and adjacent New York: New England Intercollegiate Geological Conference, 103rd Annual Meeting, Middlebury College, Middlebury, Vermont, pp. C3-1 to 32.

Hall, L.M., 1959, The geology of the St. Johnsbury quadrangle, Vermont and New Hampshire: Vermont Geological Survey Bulletin 13, Montpelier, 105 p. plus 5 plates.

Larsen, F.D., Wright, S.F., Springston, G.E., and Dunn, R.K., 2003, Glacial, late-glacial, and postglacial history of central Vermont: Guidebook for the 66th Annual Meeting of the Northeast Friends of the Pleistocene, Montpelier, Vermont, 62p.

Moore, J.S., and Hunt, A.S., 1970, The morphometry and recent sedimentation of Joe's Pond, West Danville, Vermont: Vermont Geological Survey, Studies in Vermont Geology, No. 1, 16 p.

Newell, W.L., 1970, Surficial geology of the Passumpsic Valley, northeastern Vermont: Ph.D. Dissertation, Johns Hopkins University, Baltimore, 104 p.

Ratcliffe, N.M., Stanley, R.S, Gale, M.H., Thompson, P.J., and Walsh, G.J., 2011, Bedrock Geologic Map of Vermont: USGS Scientific Investigations Map 3184, 3 sheets, scale 1:100,000.

Springston, G.E., and Kim, J., 2008, Surficial geologic map of the Knox Mountain area, Marshfield and Peacham, Vermont: Vermont Geological Survey Open File Map VG08-4, Waterbury, 2 color plates, scale 1:24,000.

<http://www.anr.state.vt.us/DEC/GEO/images/digitalofrs/KnoxMtnSurficialMap.pdf> .

Springston, G.E., and Haselton, G.M., 1999a, Surficial geologic map of the eastern portion of the Saint Johnsbury 7.5 x 15 minute quadrangle: Open File Report VG99-8, Vermont Geological Survey, Waterbury, 5 plates, scale 1:25,000.

Springston, G.E., and Haselton, G.M., 1999b, Surficial geology of the eastern half of the Saint Johnsbury 7.5 x 15 minute quadrangle: *in* Wright, S.F., (ed.), Guidebook to Field Trips in Vermont: New England Intercollegiate Geological Conference, 91st Annual Meeting, Burlington, Vermont, p. 1-16.

Stewart, D.P. and MacClintock, P., 1969, The surficial geology and Pleistocene history of Vermont: Vermont Geological Survey Bulletin 31, Montpelier, Vermont, 251p.

Thompson, W.B., Dorion, C.C., Ridge, J.C., Balco, Greg, Fowler, B.K., and Svendsen, K.M., 2017, Deglaciation and late-glacial climate change in the White Mountains, New Hampshire, USA: Quaternary Research, v. 87, p. 96-120.

Wright, S.F., 2015, Late Wisconsinan ice sheet flow across northern and central Vermont: Quaternary Science Reviews, v. 129, p. 216-228.