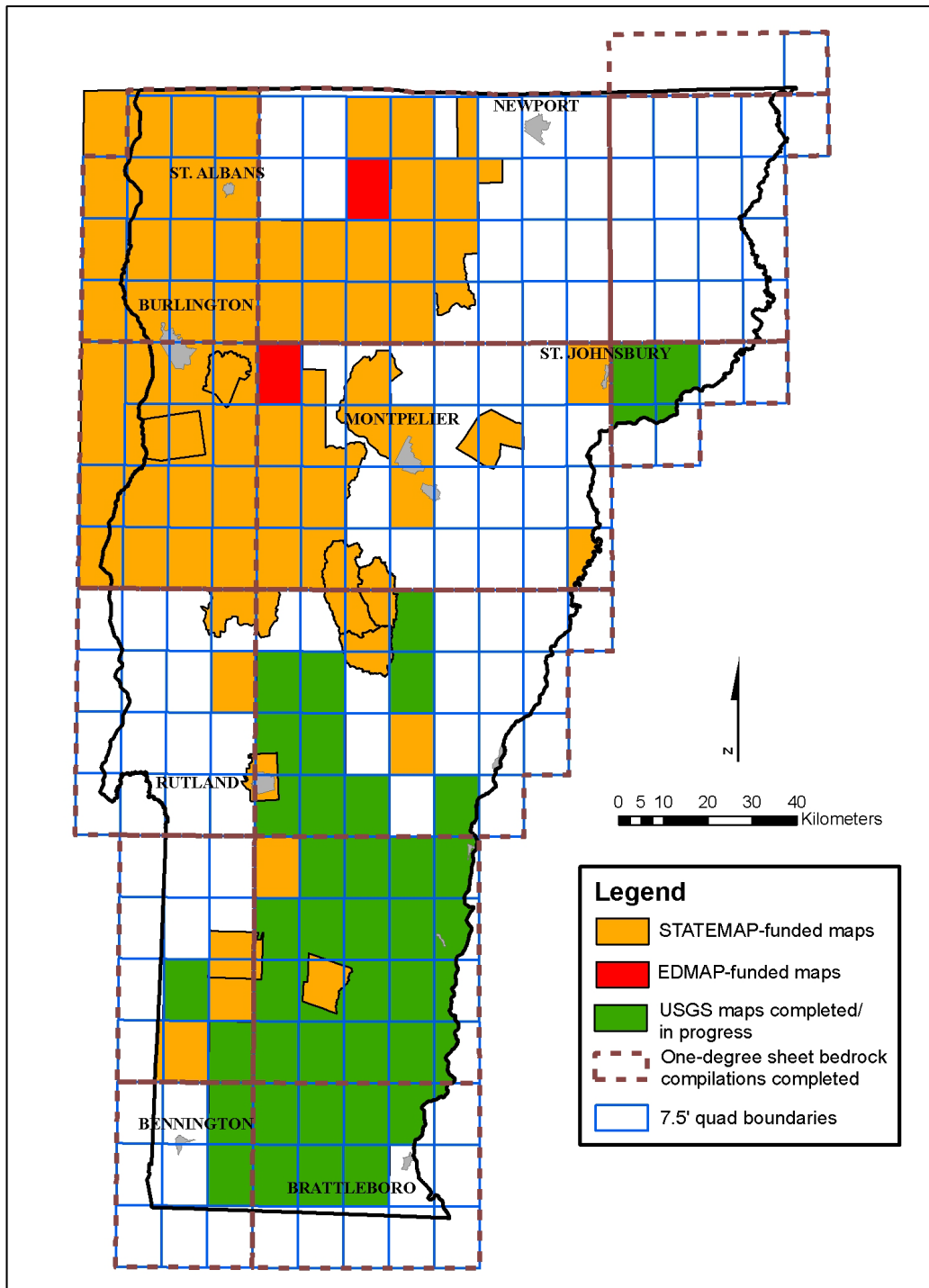




Association of American
State Geologists



Contact Information:

Vermont Geological Survey, Dept. of Environmental Conservation
Director: Laurence R. Becker (802/241-3496;
laurence.becker@state.vt.us)
<http://www.anr.state.vt.us/dec/geo/vgs.htm>

USGS Geologic Mapping Program Office
Program Coordinator: Randall C. Orndorff
(703/648-4316)
<http://ncgmp.usgs.gov>

| Federal Fiscal Year | Vermont Project Title - Scale 1:24,000 unless otherwise indicated | State Dollars | Federal Dollars | Total Project Dollars |
|----------------------------|---|----------------------|------------------------|------------------------------|
| 2004 | Surficial, Bedrock and Aquifer Maps – S. Worcester Mtns. Watershed and Wallingford Quadrangle | \$79,099 | \$79,099 | \$158,198 |
| 2005 | Bedrock, Surficial, and Aquifer Maps – West-Central Worcester Mtns., Brandon Town, and Woodstock Town | \$80,319 | \$80,319 | \$160,638 |
| 2006 | Bedrock, Surficial & Aquifer Recharge Maps - Williston Town and Dorset Town | \$90,021 | \$90,021 | \$180,042 |
| 2007 | Bedrock & Surficial Maps for the Knox Mountain Area and the Town of Londonderry | \$82,180 | \$82,180 | \$164,360 |
| 2008 | Bedrock & Surficial Maps for the Town of Charlotte; Surficial Maps for the Town of Rutland – begins June 2008 | \$81,395 | \$81,395 | \$162,790 |

The Vermont Geological Survey (VGS - a Division of the Vermont Department of Environmental Conservation) conducts surveys and research of the geology, mineral resources, and topography of the State. VGS provides aid and advice to Vermonters. Geologic maps provide the framework for addressing environmental and resource issues. To match state resources, STATEMAP is a valuable cooperative program. Current emphasis is on: Mapping the surficial and bedrock geology by town and the application of this information to geologic hazards, groundwater resources, infrastructure projects, ecosystem analysis, highway materials, etc.; and preparation of a new State bedrock geologic map as a cooperative venture with USGS and UVM. The VGS provides advice concerning the development and working of rock and mineral deposits suitable for building, road making and economic purposes, and review of projects as they relate to Act 250, Vermont's Land Use and Development Law.

In 2006, the Town of Woodstock requested basic surficial and bedrock mapping plus derivative hydrogeologic information to aid in groundwater protection and planning, priorities in both the municipal and regional plans. As part of the mapping projects, data from well logs were consulted to evaluate yield, recharge potential to aquifers, delineate the extent of overburden aquifers, and to determine the distribution of glacial deposits at depth. Derivative groundwater resource maps and recharge area maps are the result of these studies and are posted on the VGS web site. The National Park Service (NPS) Geologic Resources Evaluation Team (GRE) is utilizing the reports to create a GRE geologic geodatabase for Marsh-Billings-Rockefeller National Historical Park. The VGS provided the GRE team with the original geodatabases used to create the twelve plates in the two VGS Open-File Reports. The Marsh-Billings-Rockefeller National Historical Park Digital Geologic-GIS Map is available through the NPS Datastore at <http://science.nature.nps.gov/nrdata/>.

April 2008