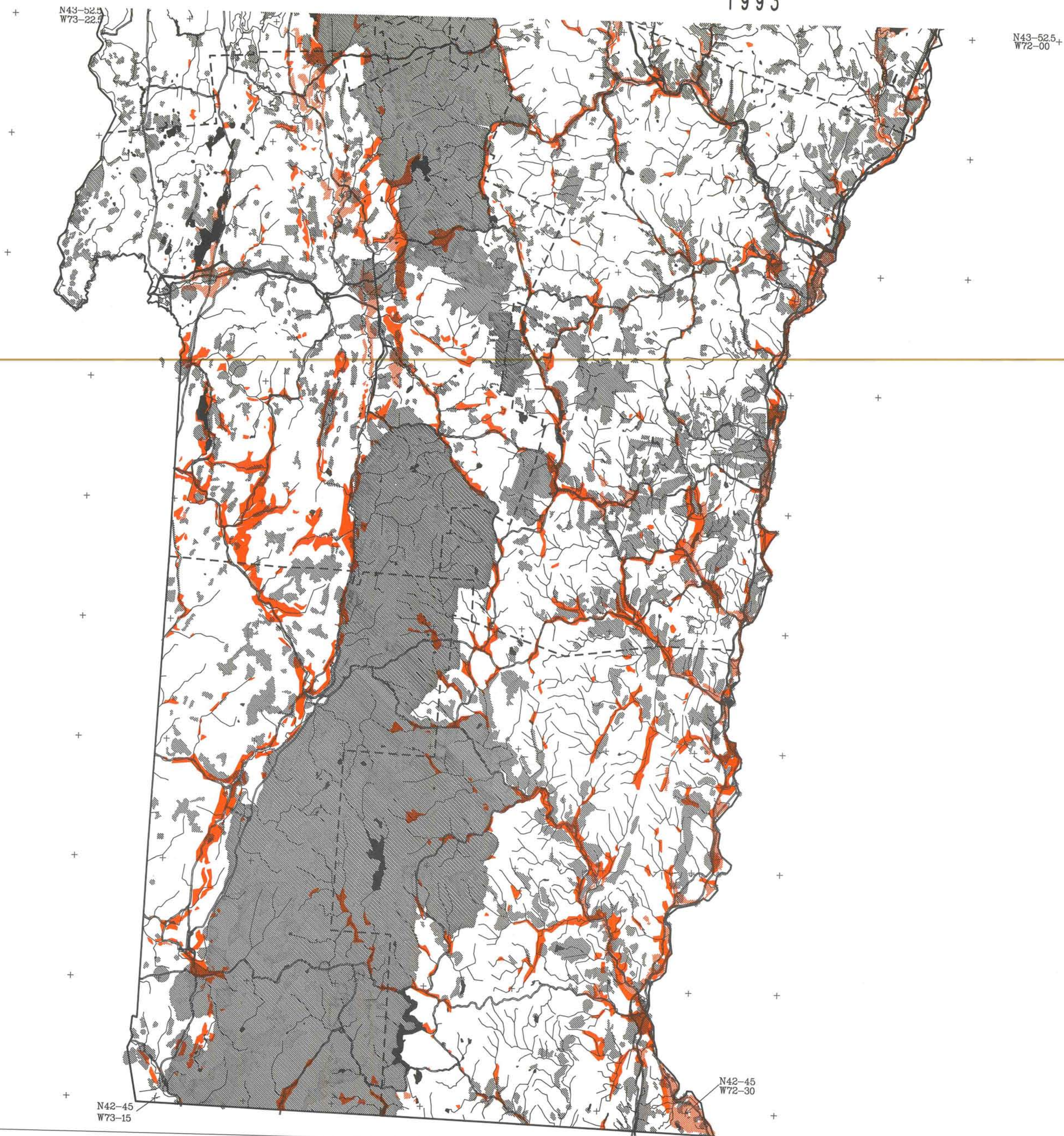






SAND AND GRAVEL RESOURCES OF VERMONT

1993

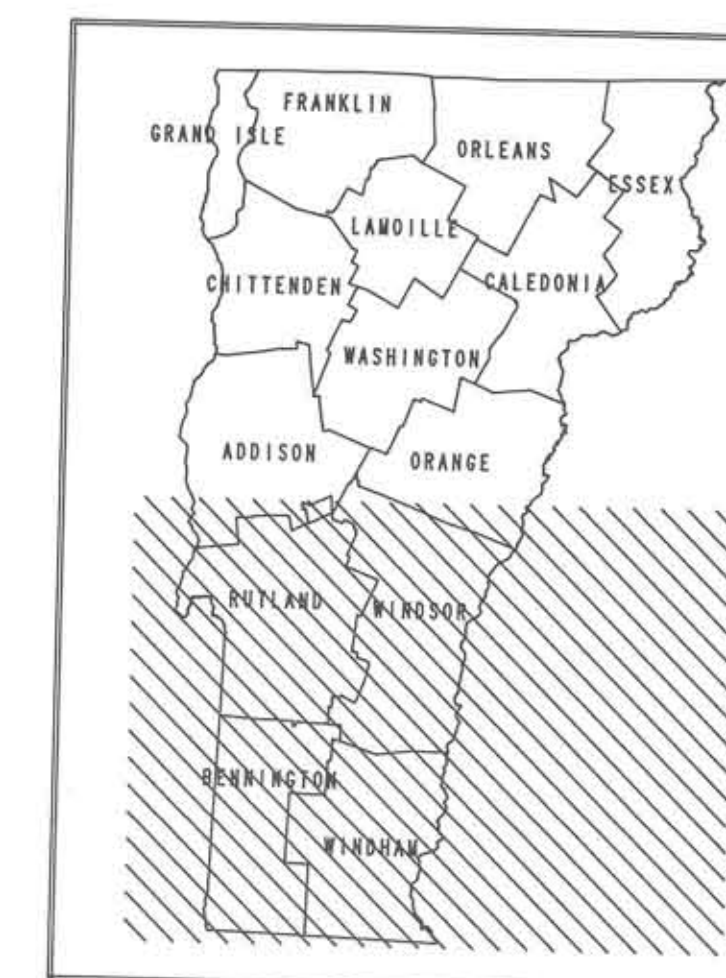
SHEET 2 OF 2



DESCRIPTION OF MAP UNITS AND SYMBOLS

-  SAND DEPOSITS - Deposits of stratified and sorted fine to very coarse sand; unit includes minor to very coarse pebbly sand and small areas of clay-to-very-fine sand deposits.
-  SAND AND GRAVEL DEPOSITS - Deposits of stratified and sorted boulder to pebble gravel; and sand and gravel deposits composed of interlayered beds of cobble to pebble gravel and beds of medium to coarse sand.
-  LAND USE EXCLUSION AREAS - Includes areas where sand and gravel resources are assumed to be unavailable because of the following land uses: (1) built-up areas; (2) critical habitat; (3) public water source protection areas; and (4) public lands.
-  LAKES AND PONDS

-  STATE BOUNDARY
-  COUNTY BOUNDARY
-  LAKES AND PONDS
-  MAJOR ROADS



NOTES:

Maps compiled by John Dudley, P.E., Chief of GIS, Agency of Natural Resources, Vermont Geological Survey, GIS Section, 103 South Main Street, Waterbury, VT 05671-0301

Prepared in cooperation with the New England Governors' Conference, Inc., U. S. Minerals Management Service, U. S. Geological Survey, and the Vermont Geological Survey.

Published by New England Governors' Conference, Inc., Boston

DATA SOURCES:

SURFICIAL GEOLOGY: Portions of state scanned from 1:62,500 surficial geology maps. Remainder of state scanned from Environmental Geology studies interpreted for sand and gravel deposits - scale varies. Data vectorized using methods specifically developed for this project.

EXCLUSIONS: Built up areas: USGS 1:100,000; Critical habitat: ANR 1:24,000; Public water source protection areas: ANR 1:24,000; Lakes and rivers: USGS 1:100,000; Populated areas over 1000 per square mile: US Census TIGER; Public Lands 1:24,000 (draft version only).

This map is for display purposes and general planning only.

Scale: 1:250,000
0 10 MILES

AGENCY OF NATURAL RESOURCES
GIS
VERMONT GEOGRAPHIC INFORMATION SYSTEM
HELPING VERMONTERS VISUALIZE CHOICE

Map produced 04/19/93