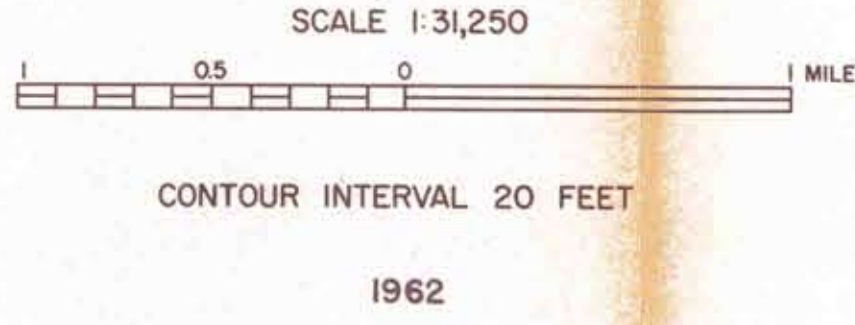


LEGEND

WEATHERSFIELD

- GRAVEL, ACCEPTABLE FOR ITEM 201 (sub-base of gravel)
- GRAVEL, DEPLETED OR NOT ACCEPTABLE FOR ITEM 201
- △ SAND, ACCEPTABLE FOR ITEM 202 (sub-base of sand)
- ▲ SAND, DEPLETED OR NOT ACCEPTABLE FOR ITEM 202
- GRANULAR BORROW, ITEM 102-A
- BORROW, ITEM 102
- ✕ EXISTING PIT
- SG SAND & GRAVEL DEPOSIT
- S SAND DEPOSIT
- 3 IDENTIFICATION NUMBER (refer to data sheets)

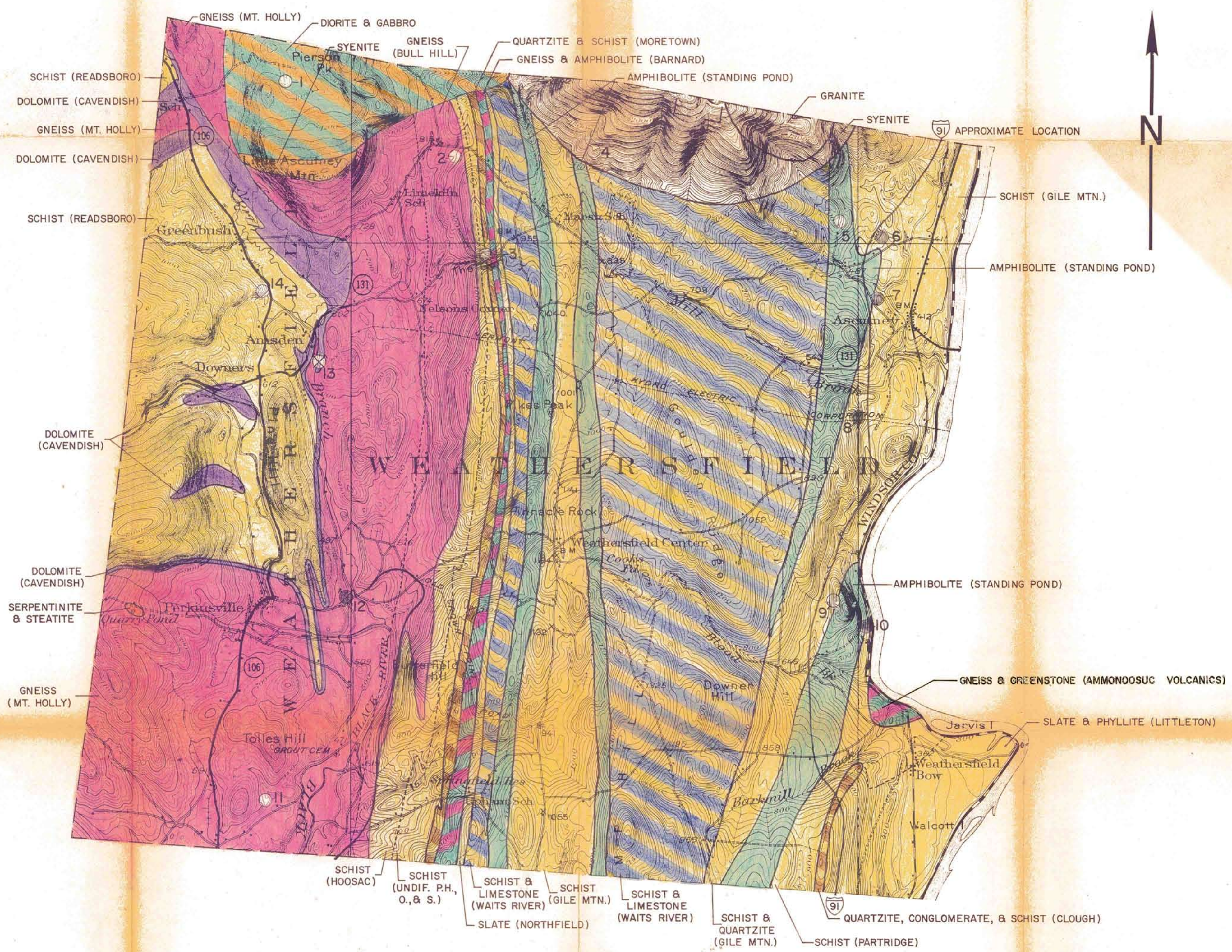


GRANULAR
MATERIALS MAP
BY
VERMONT DEPARTMENT OF HIGHWAYS
IN COOPERATION WITH
U.S. BUREAU OF PUBLIC ROADS

NOTE: BASED ON U.S.G.S. TOPOGRAPHIC MAPS

REVISIONS

DATE					
BY					



LEGEND

WEATHERSFIELD

- ROCK, ACCEPTABLE FOR ITEM 204 (sub-base of crushed rock)
- ROCK, NOT ACCEPTABLE FOR ITEM 204
- ✕ EXISTING QUARRY
- GRANITE TO DIORITE (light to intermediate igneous rocks)
- AMPHIBOLITE, GABBRO, DIABASE, METADIABASE, GREENSTONE, TRAP DIKES (basic or dark igneous rocks)
- PERIDOTITE, PYROXENITE, SERPENTINITE (ultra-basic igneous rocks)
- GNEISS
- QUARTZITE
- DOLOMITE
- MARBLE, LIMESTONE
- SCHISTS, SLATES, PHYLLITES, SHALES, CONGLOMERATES
- IDENTIFICATION NUMBER (refer to data sheets)



CONTOUR INTERVAL 20 FEET

1962

ROCK MATERIALS MAP

BY
VERMONT DEPARTMENT OF HIGHWAYS
IN COOPERATION WITH
U.S. BUREAU OF PUBLIC ROADS

NOTE: BASED ON U.S.G.S. TOPOGRAPHIC MAPS

REVISIONS	DATE					
	BY					