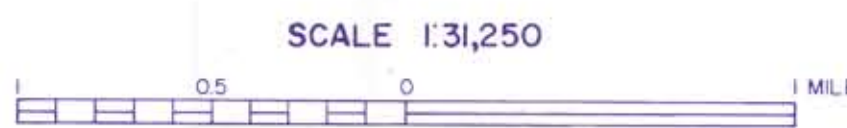


LEGEND

- ROCK, ACCEPTABLE FOR ITEM 704.06 (crushed stone for sub-base)
- ROCK, NOT ACCEPTABLE FOR ITEM 704.06
- ⛏ EXISTING QUARRY
- GRANITE TO DIORITE (light to intermediate igneous rocks)
- AMPHIBOLITE, GABBRO, DIABASE, METADIABASE, GREENSTONE, TRAP DIKES (basic or dark igneous rocks)
- PERIDOTITE, PYROXENITE, SERPENTINITE (ultra-basic igneous rocks)
- GNEISS
- QUARTZITE
- DOLOMITE
- MARBLE, LIMESTONE
- SCHISTS, SLATES, PHYLITES, SHALES, CONGLOMERATES
- 3 IDENTIFICATION NUMBER (refer to data sheets)

PITTSFIELD



SCALE 1:31,250

CONTOUR INTERVAL 20 FEET

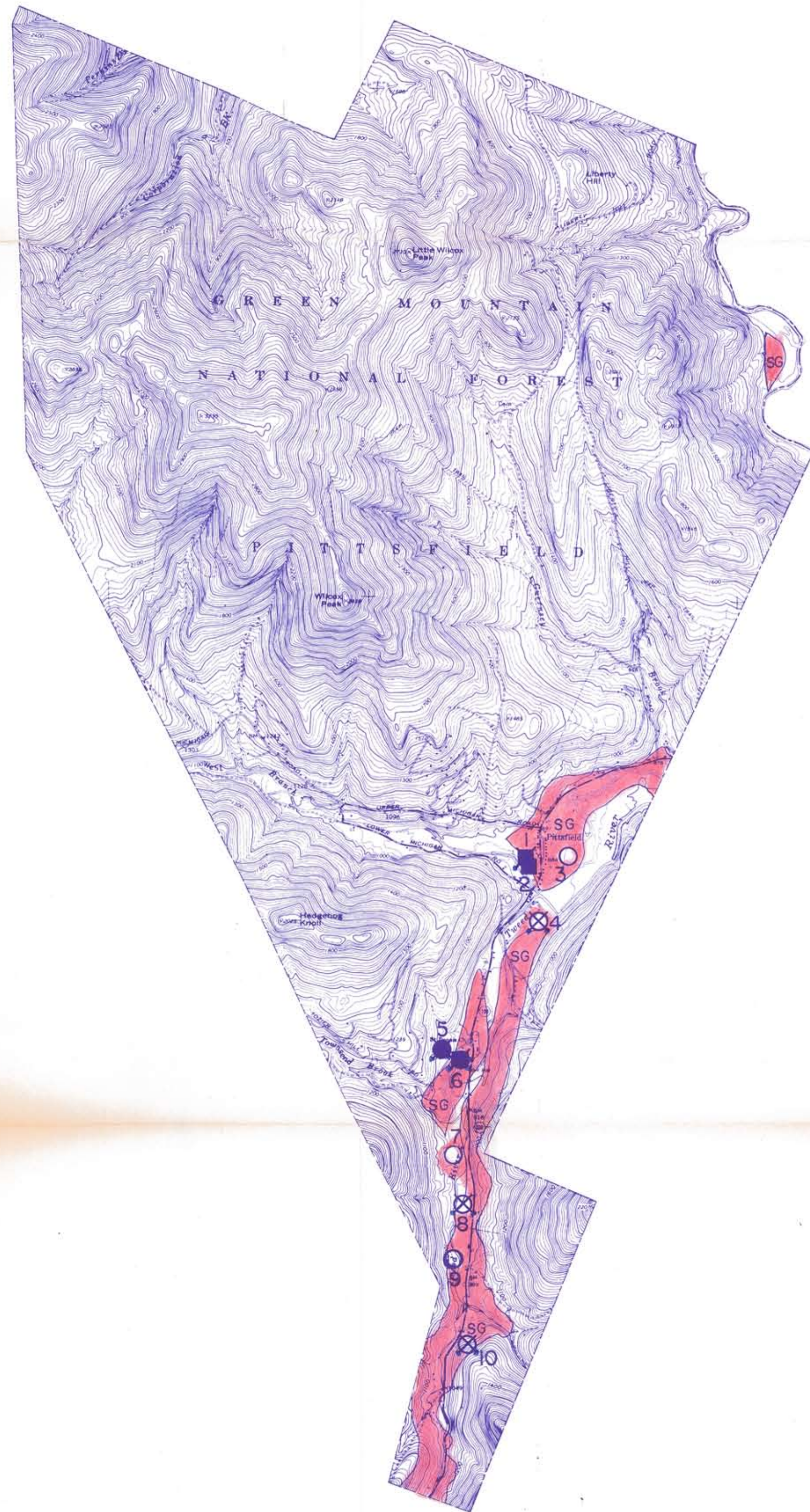
1979

ROCK
MATERIALS MAP
BY
VERMONT AGENCY OF TRANSPORTATION
MATERIALS AND RESEARCH DIVISION

NOTE: BASED ON U.S.G.S. TOPOGRAPHIC MAPS

REVISIONS

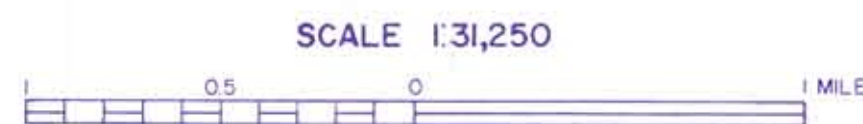
DATE					
BY					



LEGEND

- GRAVEL, ACCEPTABLE FOR ITEM 704.05 (gravel for sub-base)
- GRAVEL, DEPLETED OR NOT ACCEPTABLE FOR ITEM 704.05
- △ SAND, ACCEPTABLE FOR ITEM 703.03 (sand borrow and cushion)
- ▲ SAND, DEPLETED OR NOT ACCEPTABLE FOR ITEM 703.03
- GRANULAR BORROW, ITEM 703.05
- MATERIAL NOT ACCEPTABLE FOR ITEM 703.05
- ⊗ EXISTING PIT
- SG SAND and GRAVEL DEPOSIT
- S SAND DEPOSIT
- 3 IDENTIFICATION NUMBER (refer to data sheets)

PITTSFIELD



CONTOUR INTERVAL 20 FEET
1979

GRANULAR
MATERIALS MAP
BY
VERMONT AGENCY OF TRANSPORTATION
MATERIALS AND RESEARCH DIVISION

NOTE: BASED ON U.S.G.S. TOPOGRAPHIC MAPS

REVISIONS

DATE					
BY					