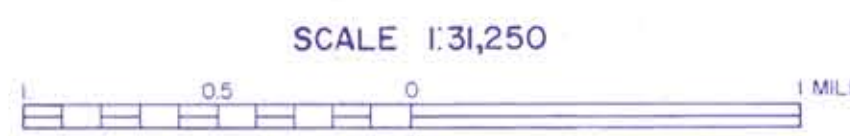


LEGEND

- GRAVEL, ACCEPTABLE FOR ITEM 704.05 (gravel for sub-base)
- GRAVEL, DEPLETED OR NOT ACCEPTABLE FOR ITEM 704.05
- △ SAND, ACCEPTABLE FOR ITEM 703.03 (sand borrow and cushion)
- ▲ SAND, DEPLETED OR NOT ACCEPTABLE FOR ITEM 703.03
- GRANULAR BORROW, ITEM 703.05
- MATERIAL NOT ACCEPTABLE FOR ITEM 703.05
- ✕ EXISTING PIT
- SG SAND & GRAVEL DEPOSIT
- S SAND DEPOSIT
- 3 IDENTIFICATION NUMBER (refer to data sheets)

MENDON



CONTOUR INTERVAL 20 FEET

1979

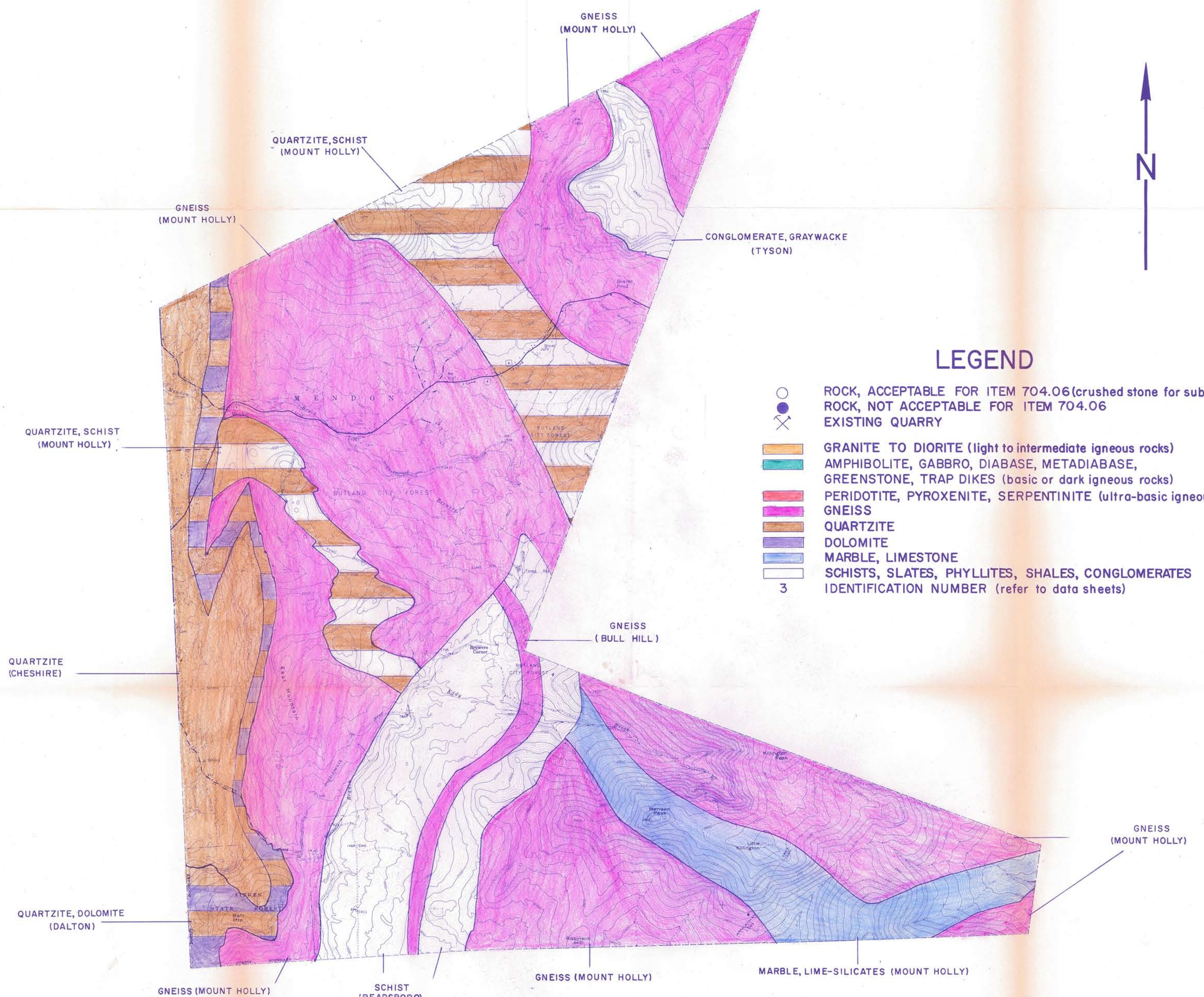
GRANULAR MATERIALS MAP

BY  
VERMONT AGENCY OF TRANSPORTATION  
MATERIALS AND RESEARCH DIVISION

NOTE: BASED ON U.S.G.S. TOPOGRAPHIC MAPS

PLATE I GRANULAR

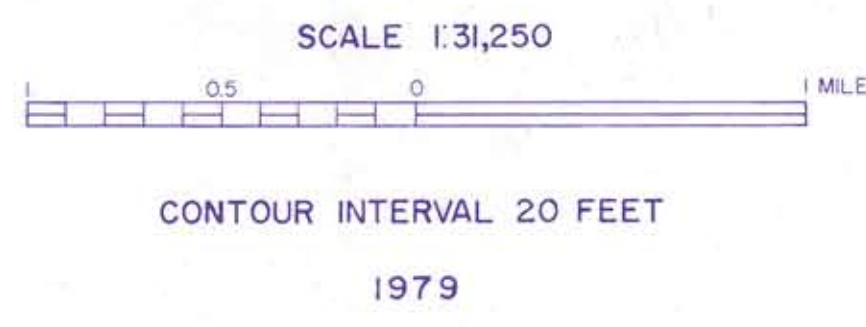
DATE					
BY					



LEGEND

- ROCK, ACCEPTABLE FOR ITEM 704.06 (crushed stone for sub-base)
- ROCK, NOT ACCEPTABLE FOR ITEM 704.06
- EXISTING QUARRY
- GRANITE TO DIORITE (light to intermediate igneous rocks)
- AMPHIBOLITE, GABBRO, DIABASE, METADIABASE, GREENSTONE, TRAP DIKES (basic or dark igneous rocks)
- PERIDOTITE, PYROXENITE, SERPENTINITE (ultra-basic igneous rocks)
- GNEISS
- QUARTZITE
- DOLOMITE
- MARBLE, LIMESTONE
- SCHISTS, SLATES, PHYLLITES, SHALES, CONGLOMERATES
- IDENTIFICATION NUMBER (refer to data sheets)

MENDON



ROCK MATERIALS MAP

BY  
 VERMONT AGENCY OF TRANSPORTATION  
 MATERIALS AND RESEARCH DIVISION

NOTE: BASED ON U.S.G.S. TOPOGRAPHIC MAPS

DATE				
BY				