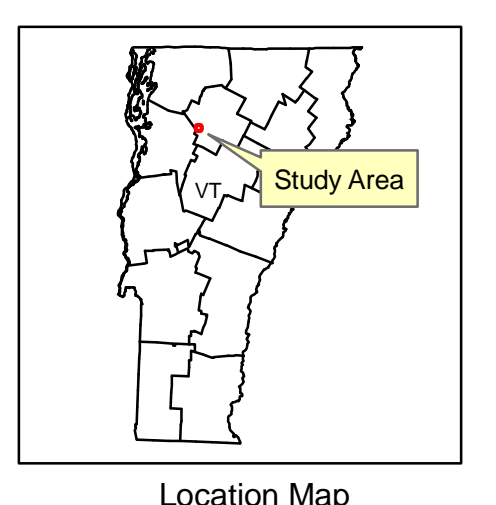
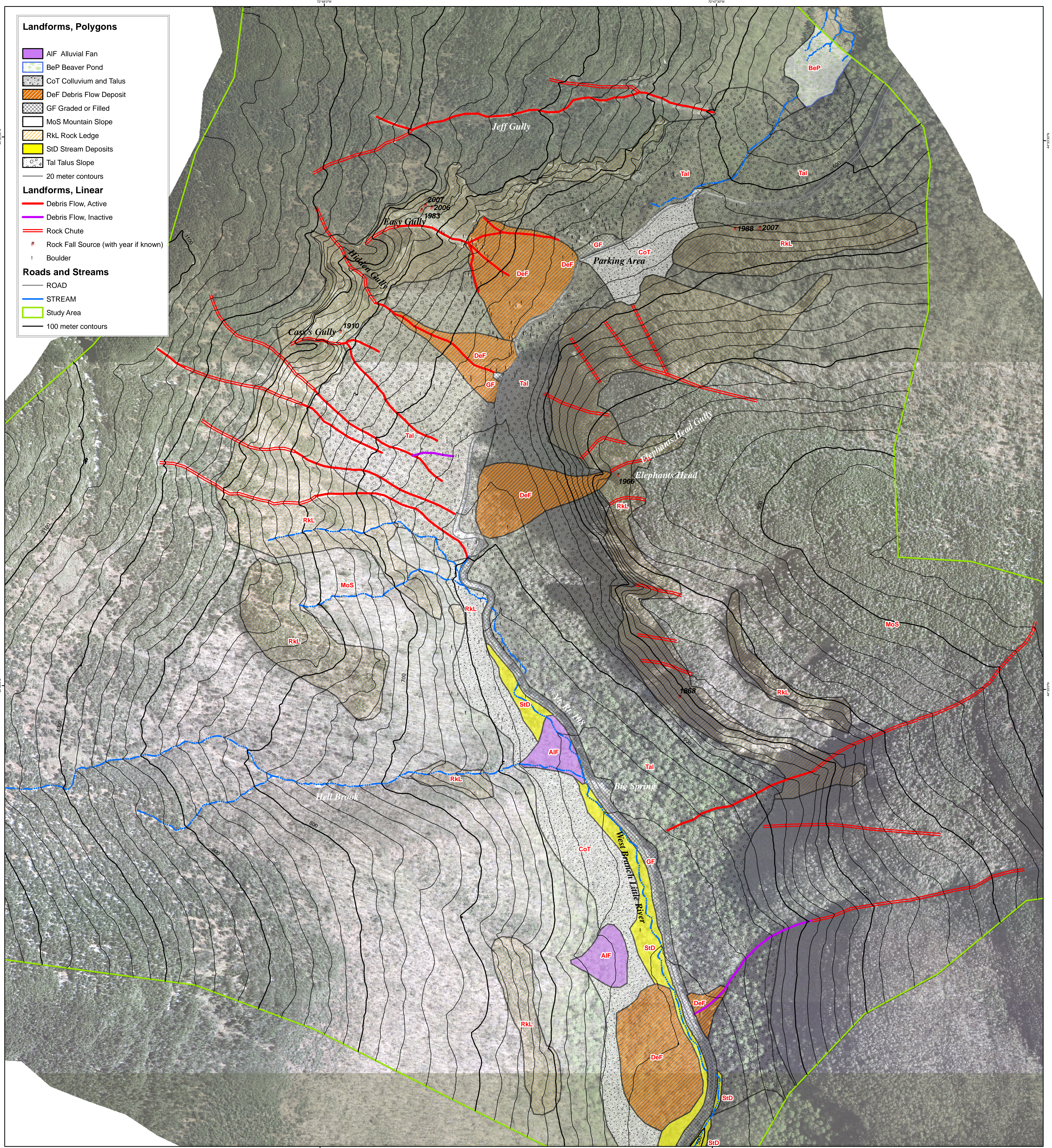


Aerial photograph taken in 1962 and approximately georeferenced. Road and streams are from photogrammetry by James W. Sewall Co. in 2007. Map produced for Vermont Geological Survey by Norwich University Geology and Environmental Science Department. Cartography by George Springston, March 25, 2008.

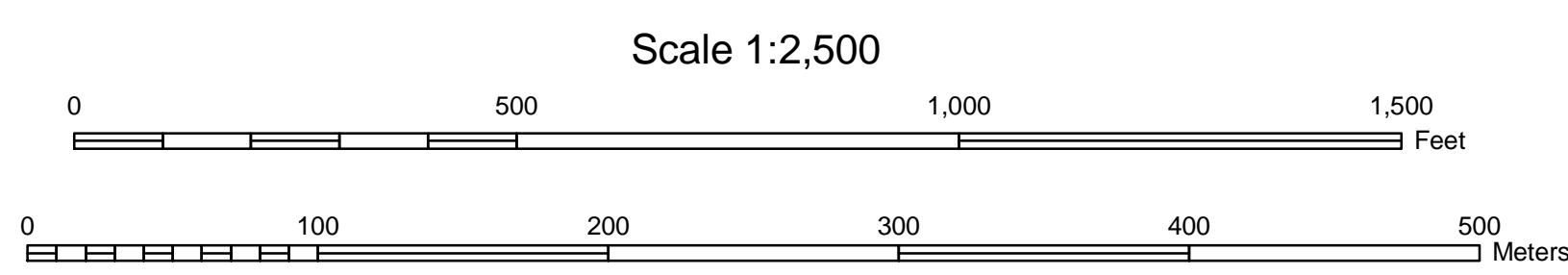
**1962 Aerial Photo of Smugglers Notch
Cambridge, Vermont
George Springston**





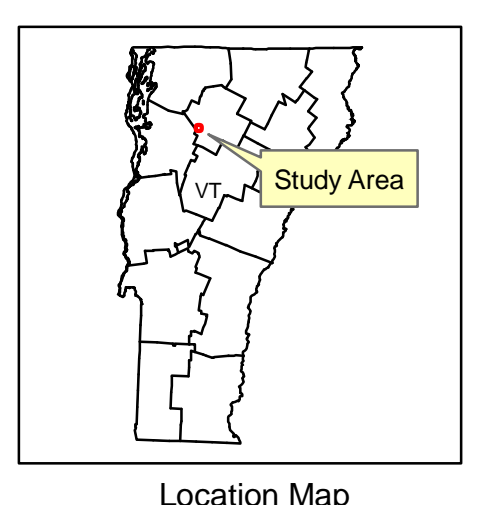
Orthophoto base produced by James W. Sewall Co. from aerial photos taken in May, 2007. Map produced for Vermont Geological Survey by Norwich University Geology and Environmental Science Department. Cartography by George Springston, June 4, 2009.

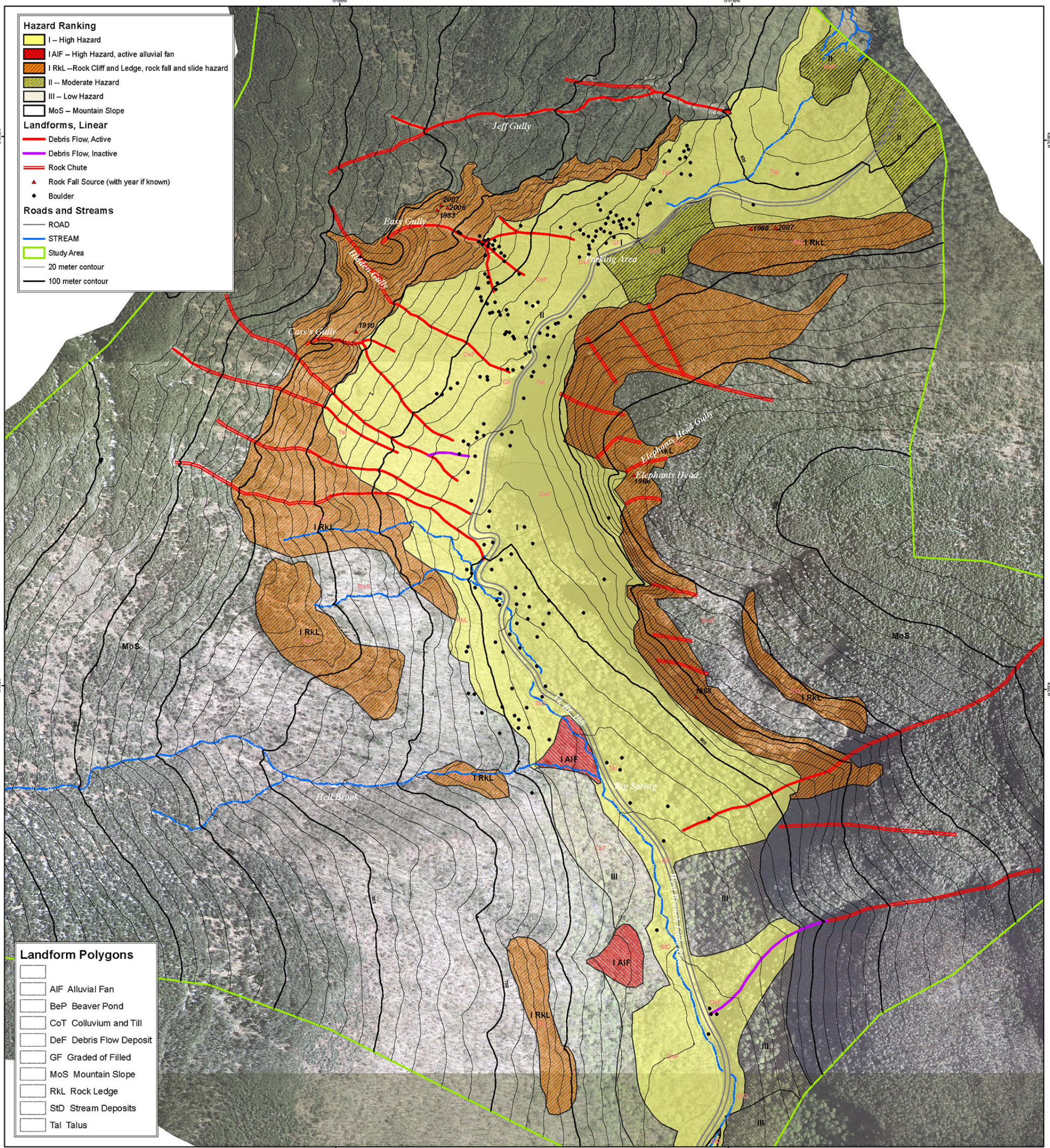
Contour interval 20 meters.



**Landform Map of Smugglers Notch
Cambridge, Vermont**
George Springston

3





Hazard Ranking

- I - High Hazard
- IAIF - High Hazard, active alluvial fan
- I RkL - Rock Cliff and Ledge, rock fall and slide hazard
- II - Moderate Hazard
- III - Low Hazard
- MoS - Mountain Slope

Landforms, Linear

- Debris Flow, Active
- Debris Flow, Inactive
- Rock Chute
- Rock Fall Source (with year if known)
- Boulder

Roads and Streams

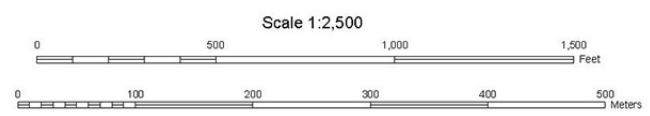
- ROAD
- STREAM
- Study Area
- 20 meter contour
- 100 meter contour

Landform Polygons

- AIF Alluvial Fan
- BeP Beaver Pond
- CoT Colluvium and Till
- DeF Debris Flow Deposit
- GF Graded or Filled
- MoS Mountain Slope
- RkL Rock Ledge
- StD Stream Deposits
- Tal Talus

Orthophoto base produced by James W. Sewall Co. from aerial photos taken in May, 2007. Map produced for Vermont Geological Survey by Norwich University Geology and Environmental Science Department. Cartography by George Springston, June 4, 2009.

Contour interval 20 meters.



**Slope Instability Hazard Map of Smugglers Notch
Cambridge, Vermont**
George Springston

