

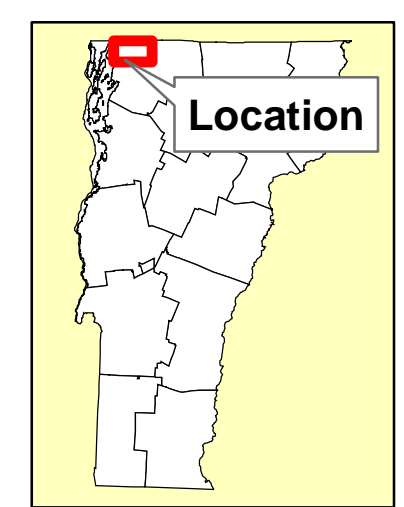
Slope Percent

High : 1000.29
Low : 0

Highgate Boundary
Minor Roads
Major Roads
Interstates
Water Bodies
Streams

EXPLANATION

This plate shows the slope of the land surface. The map is derived from lidar (light distance and ranging) data. This is very detailed airborne laser topographic mapping. Trees, buildings, and other structures have been removed in the processing in order to show the shape of the land surface. Steep slopes are shown as black, intermediate slopes are gray, and flat areas are shown as white.



Base map layers from Vermont Center for Geographic Information. Coordinate System: Vermont State Plane, meters, NAD 83. Geographic coordinates shown at topo corners are in NAD 83.

Digital cartography by George Springston, June 30, 2016. Research supported by the Vermont Geological Survey, Dept. of Environmental Conservation, VT ANR.

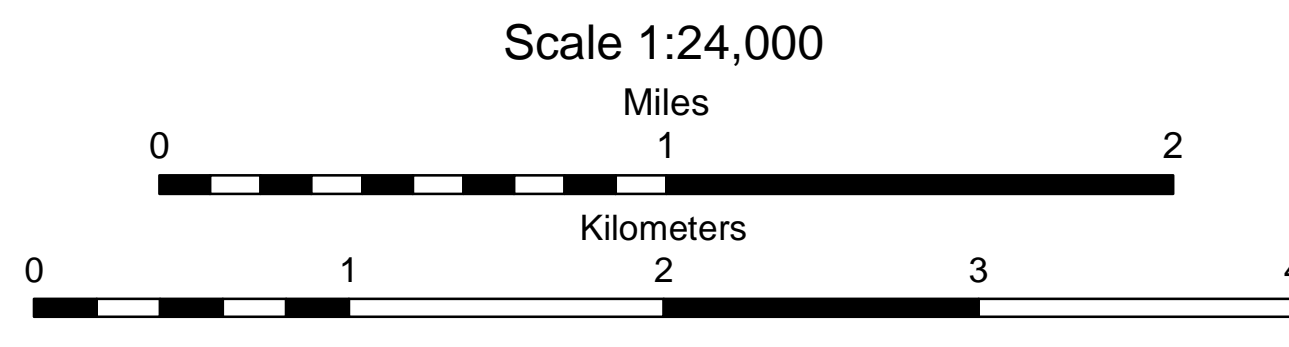
The views and conclusions contained in this document are those of the authors and should not be interpreted as necessarily representing the official policies, either expressed or implied, of the State of Vermont.

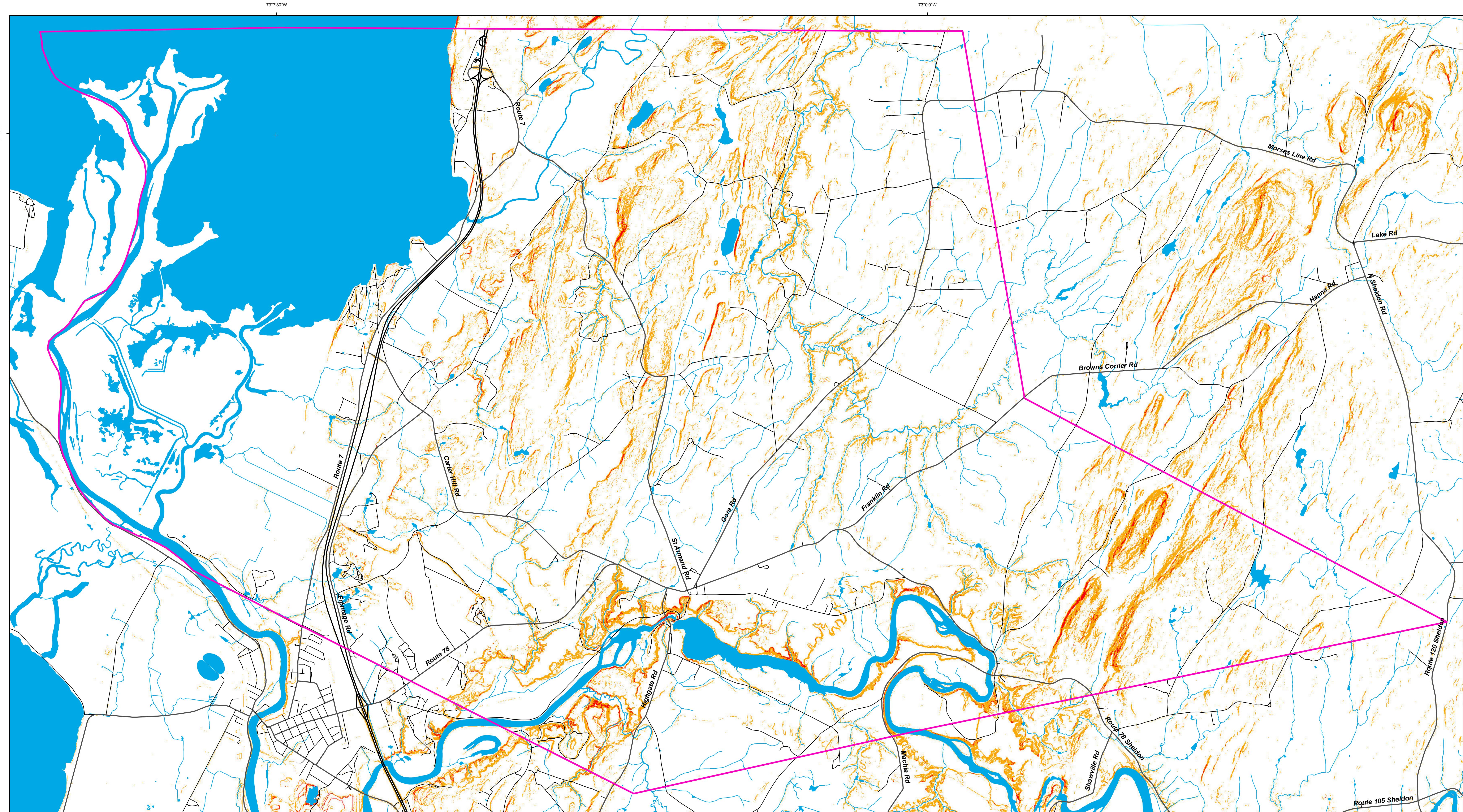
Published by:
Vermont Geological Survey, Marjorie Gale, State Geologist
Department of Environmental Conservation
1 National Life Drive, Davis 2
Montpelier, VT 05620-3902
<http://dec.vermont.gov/geological-survey>



Slope Map of the Town of Highgate, Vermont

by George E. Springston
2016





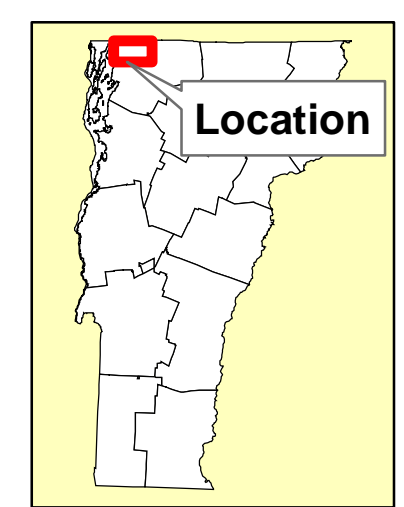
Slope (Percent)

- 0 to 30
- 30 to 72.7
- >72.7
- Highgate Boundary
- Minor Roads
- Major Roads
- Interstates
- Water Bodies
- Streams

EXPLANATION

This plate shows the slope data shown on Plate 1 reclassified into three classes. These are used as components of the map of potentially unstable slopes shown on Plate 4. The map is divided into classes as follows:

- Class 1 - 0 to 30 % (0 to 16.5 °)
- Class 2 - 30 to 72.7 % (16.5 to 36°)
- Class 3 - > 72.7 % (>36°)



Base map layers from Vermont Center for Geographic Information. Coordinate System: Vermont State Plane, meters, NAD 83. Geographic coordinates shown at top corners are in NAD 83.

Digital cartography by George Springston, June 30, 2016. Research supported by the Vermont Geological Survey, Dept. of Environmental Conservation, VT ANR.

The views and conclusions contained in this document are those of the authors and should not be interpreted as necessarily representing the official policies, either expressed or implied, of the State of Vermont.

Published by:
Vermont Geological Survey, Marjorie Gale, State Geologist
Department of Environmental Conservation
1 National Life Drive, Davis 2
Montpelier, VT 05620-3902
<http://dec.vermont.gov/geological-survey>



Slope Factor Map of the Town of Highgate, Vermont

by George E. Springston
2016

