

Slope Instability at Country Lane and Jericho Road, Hartford, Vermont

George Springston
Department of Geology and Environmental
Science
Norwich University
158 Harmon Drive
Northfield, VT 05663
gsprings@norwich.edu



May 15, 2008

Photos from site visit of May 13, 2008 by
Laurence Becker, Vermont State Geologist,
Vermont Department of Environmental
Conservation, and George Springston,
Research Associate, Norwich University
Department of Geology and Environmental
Science.

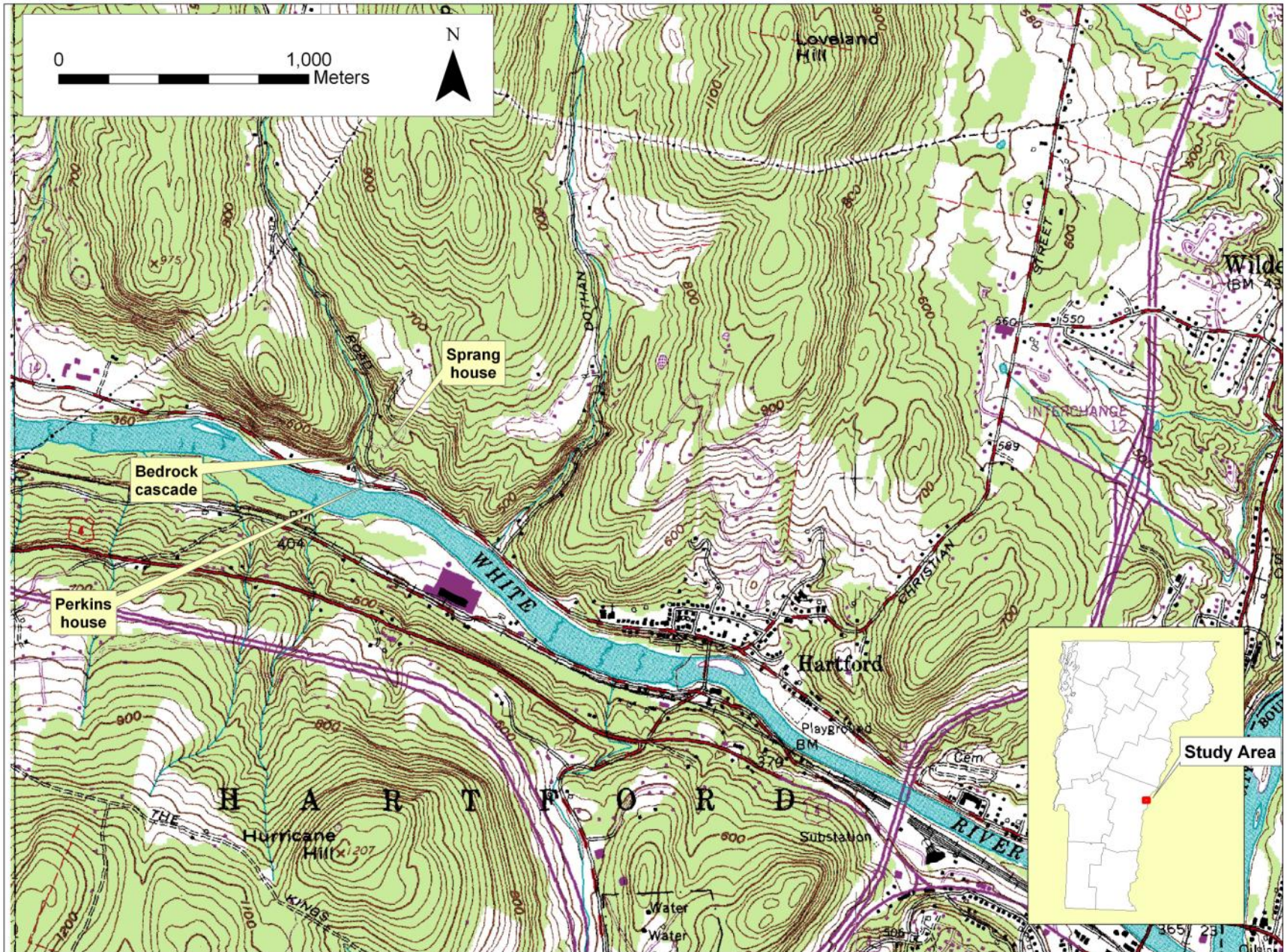


Figure 1. Base map from USGS Hanover quadrangle.

G. Springston
4436a
5/13/2008



Figure 2. Looking N along driveway. Cracks are forming in driveway near figures and near cellar hatch in back left of view. Recently filled "sinkhole is just beyond stump on right.



Figure 3. Looking N
Concrete block wall has
dropped on E side (right)
and in background
geologist is standing in
area where ground has
apparently dropped 3.5
feet.

L. Becker
4461a
5/13/2008



Figure 4. Looking S with deforming retaining wall on left. Broken fence and tilting trees in background. Filled sinkhole in front of stump in middle distance.

L. Becker
4425a
5/13/2008



Figure 5. Looking S. Broken fence and tilting trees in background. Recently filled sinkhole in driveway in front of stump.

L. Becker
4433a
5/13/2008



Figure 6. Looking W towards driveway. Fresh fault scarp in lacustrine sediments with vertical movement of about 2 feet.

L. Becker
4443a
5/13/2008



Figure 7. Looking S at E side of garage. Soil pulling away from building. The fault-related swale is to the left.

G. Springston
4439a
5/13/2008

Figure 8. At fresh fault scarp on east side of swale southeast of house. Looking N. Bottom of swale has dropped 5 feet. Appears to be a fault-bounded graben.



L. Becker
4446a
5/13/2008

Figure 9. Looking S from Country Lane along swale W of house. Runoff from N side of road is carried into this swale by a culvert which daylights where figure is standing.






Figure 10. Looking N up recently active landslide on north side of Jericho Road. About 25 feet high and consisting of lacustrine silt and silty clay with a few thin beds of medium to fine sand.

L. Becker
4476a
5/13/2008

L. Becker
4471
5/13/2008

Figure 11. Example of seepage from varved silt and silty clay along Jericho Road SW of Sprang house.



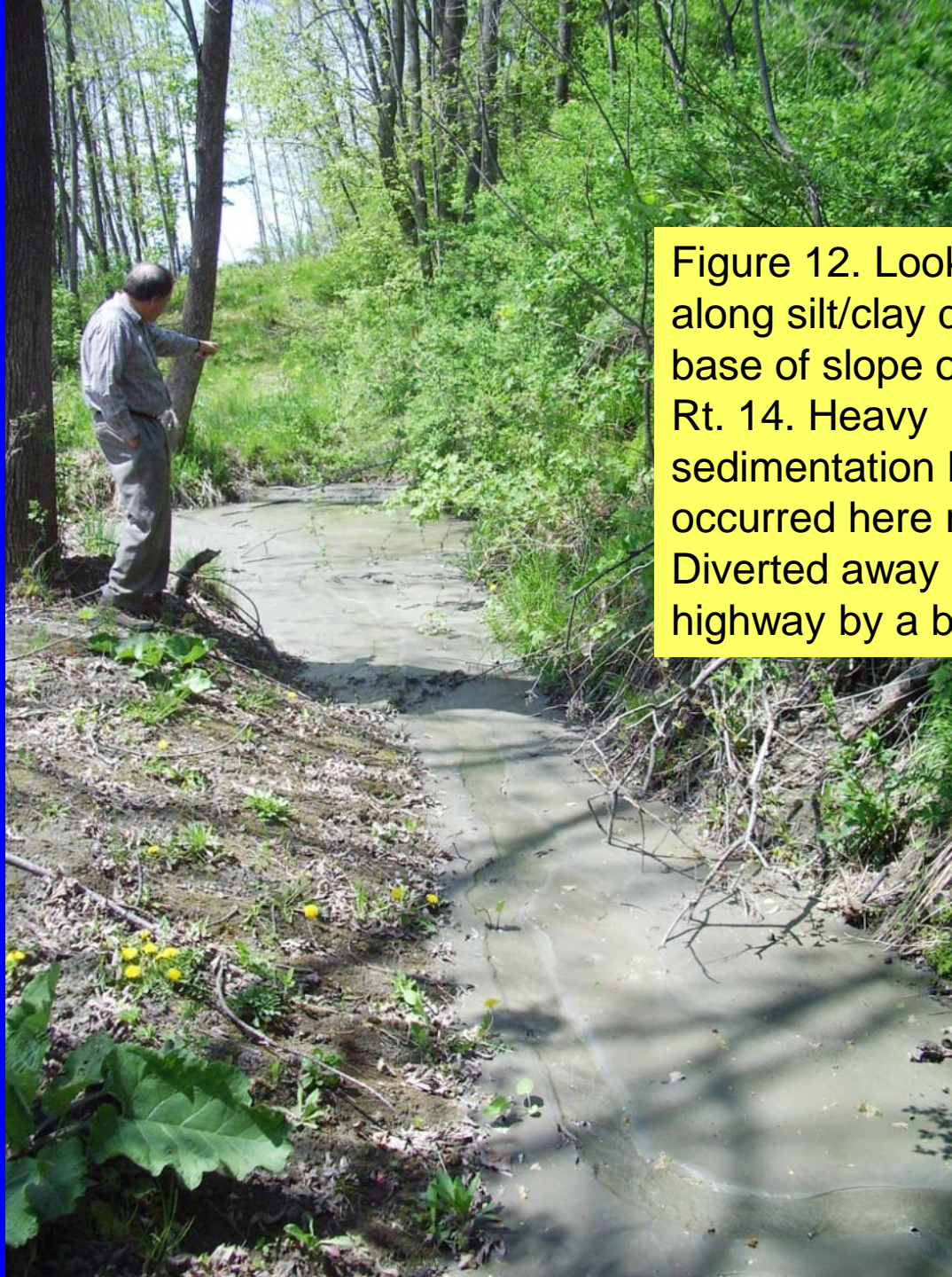


Figure 12. Looking W along silt/clay deposit at base of slope on N side Vt. Rt. 14. Heavy sedimentation has clearly occurred here recently. Diverted away from highway by a berm.

G. Springston
4469a
5/13/2008