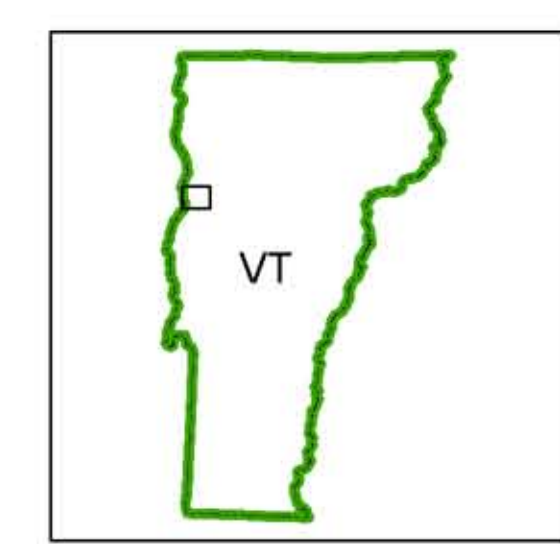
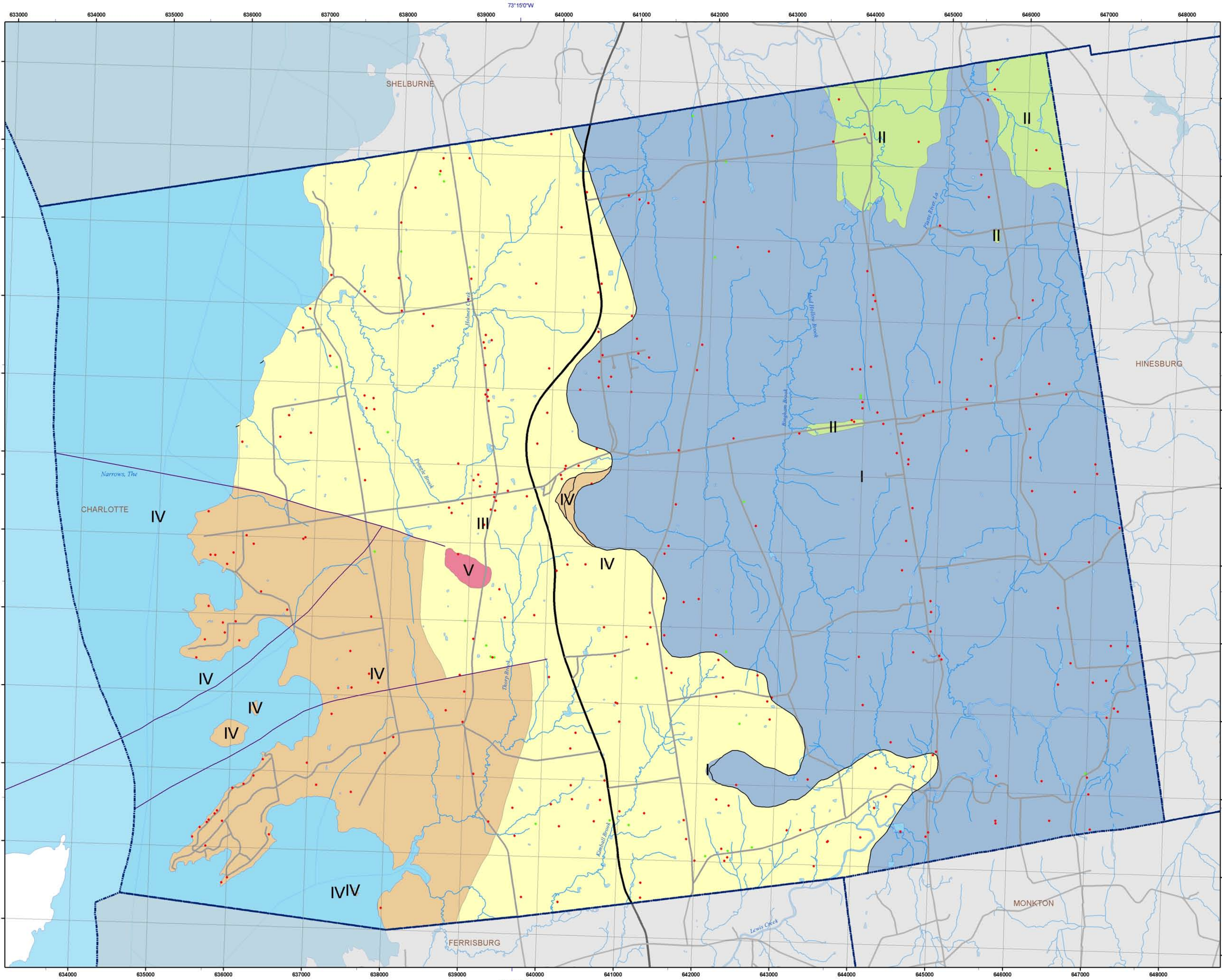


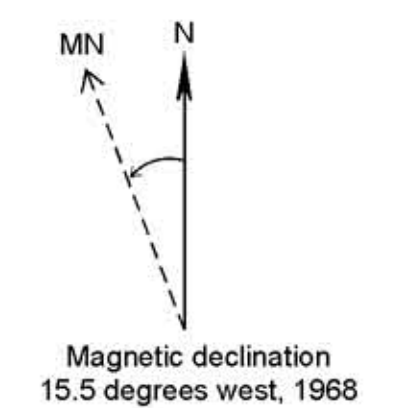
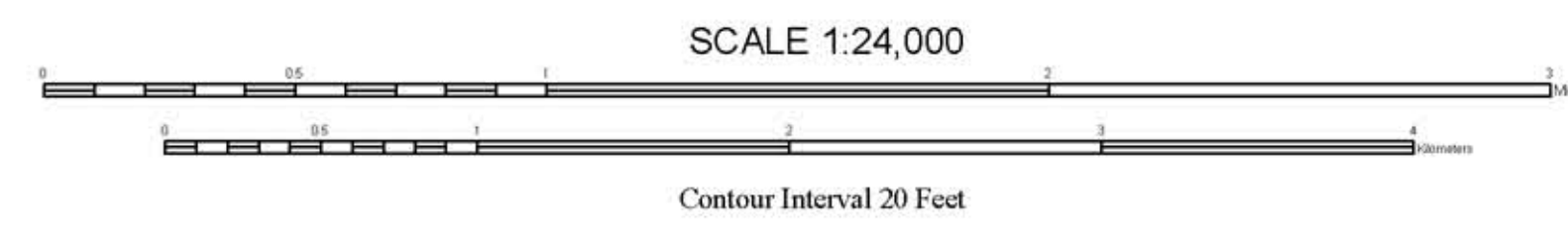
Legend

Bedrock Hydrogeologic Unit

- I** Cambrian quartzites and dolostones (Cm, Cw, Cda, Ccs) on the upper plate of the Champlain Thrust
 Number of wells: 112 or 37%
 Mean yield: 15 gpm; Median yield: 4 gpm
 Mean depth: 397 ft; Median depth: 362 ft
 80% or 90/112 have gpm > 1 gpm
- II** Ordovician carbonates (Os and Ocu (no wells in Ocu)) on the upper plate of the Champlain Thrust
 Number of wells: 9 or 3%
 Mean yield: 23 gpm; Median yield: 20 gpm
 Mean depth: 287 ft; Median depth: 275 ft
 Wells with yield > 1 gpm: 8 or 89%
- III** Ordovician black shales and interbedded limestone (Osp) on the lower plate of the Champlain Thrust
 Number of wells: 132 or 43%
 Mean yield: 8 gpm; Median yield: 2 gpm
 Mean depth: 463 ft; Median depth: 500 ft
 Wells with yield > 1 gpm: 72 or 55%
- IV** Cambrian and Ordovician carbonates (Clf, Oth, Ob, Ocbr, Ocg, Ogf) on the lower plate of the Champlain Thrust
 Number of wells: 52 or 17%
 Mean yield: 10 gpm; Median yield: 6 gpm
 Mean depth: 363 ft; Median depth: 325 ft
 Wells with yield > 1 gpm: 48 or 92%
- V** Cretaceous intrusive rock (Kd)
 1 well with reported yield of 50 gpm and depth of 640 ft
- Champlain Thrust
- Fault
- Bedrock Well
- Gravel Well
- Gravel wells
 Mean yield: 28 gpm; Median yield: 20 gpm
 Mean depth: 149 ft; Median depth: 148 ft
 Minimum reported yield: 1 gpm
 Maximum reported yield: 100 gpm
 Minimum reported depth: 70 ft
 Maximum reported depth: 240 ft
 Wells with yield > 1 gpm: 29 or 97%
- Town Boundaries
- Roads
- Water



Base map from U.S. Geological Survey.
 Quadrangle names printed in blue.
 Coordinate System: Vermont State Plane, meters, NAD 83.
 Geographic coordinates shown at topo corners are in NAD 83.
 Grid overlay on map is Universal Transverse Mercator,
 Zone 18N, NAD 27.
 Date: May 2010



BEDROCK HYDROGEOLOGIC UNITS, CHARLOTTE, VERMONT

G. Springston, M. Gale, J. Kim, S. Wright, H. Earle, A. Clark and T. Smith
 2010

Published by:
 Vermont Geological Survey
 Laurence Becker, State Geologist
 Department of Environmental Conservation
 Agency of Natural Resources
 103 South Main St., Logue Cottage
 Waterbury, VT 05671-2420
<http://www.anr.state.vt.us/dec/geo/vgs.htm>

Research supported by the Vermont Geological Survey,
 Dept. of Environmental Conservation, VT ANR.
 This geologic map was funded in part by the USGS
 National Cooperative Mapping Program, and the
 Town of Charlotte.
 The views and conclusions contained in this document
 are those of the authors and should not
 be interpreted as necessarily representing the official policies,
 either expressed or implied, of the U.S. Government.



Fractured carbonates, Unit IV

