



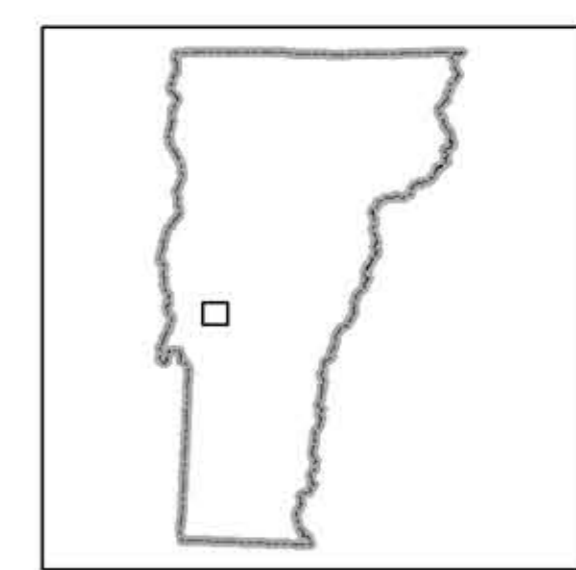
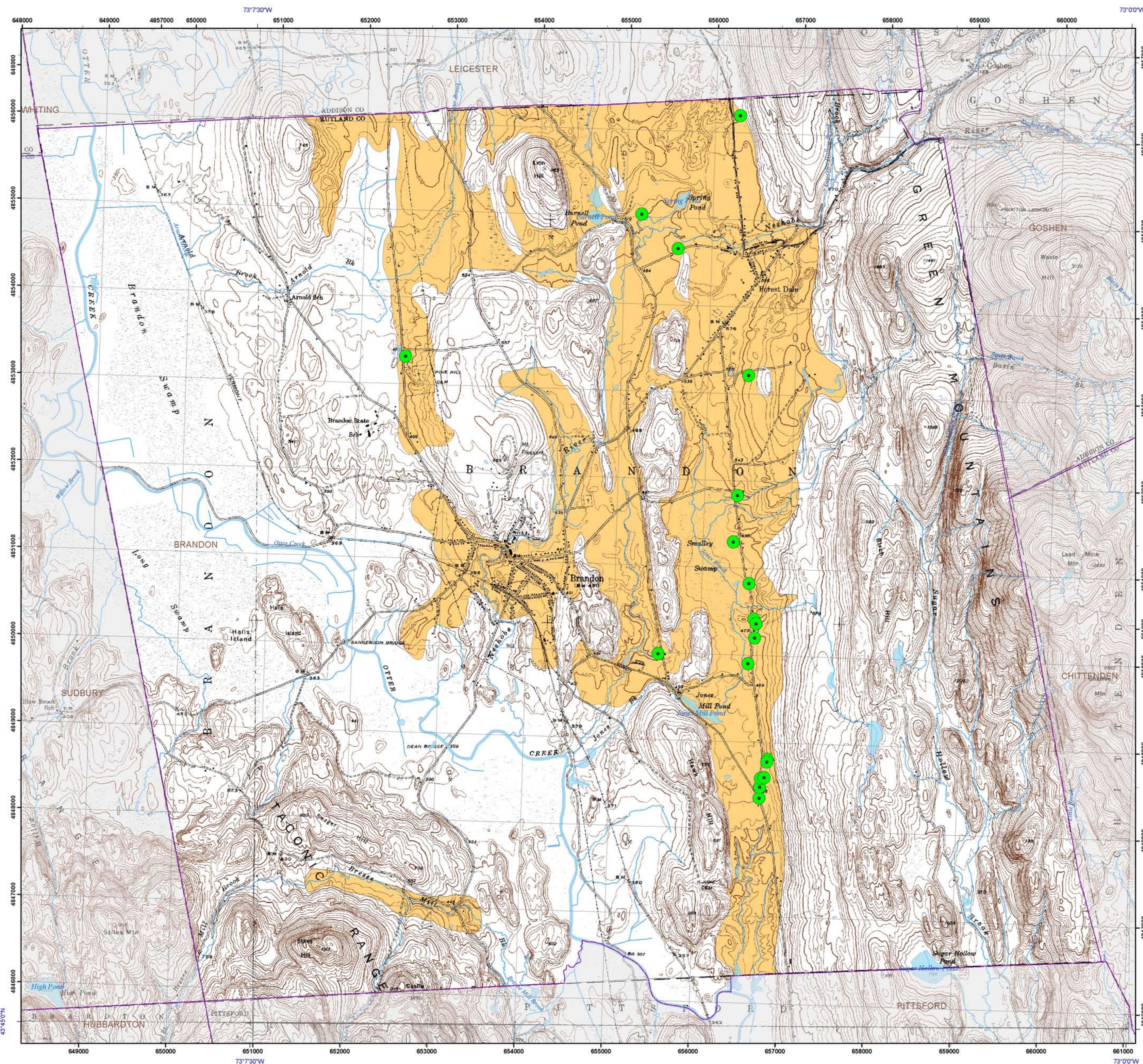


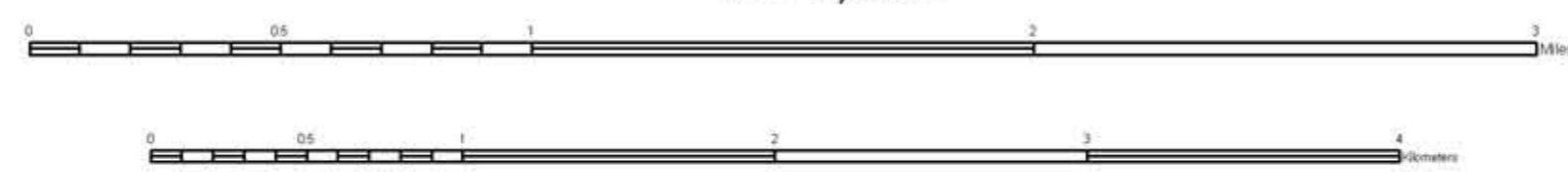
**Legend**

-  Gravel Wells, proven aquifer
-  Extent of potential overburden (shallow) aquifer
-  Surface water
-  Town Boundaries

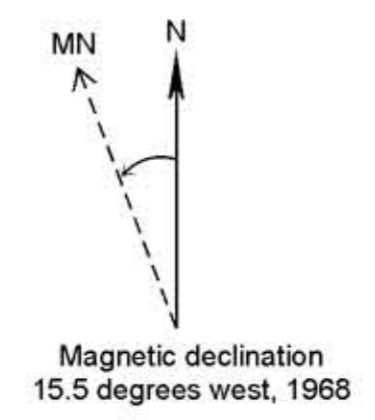


Published by:  
Vermont Geological Survey  
Laurence Becker, State Geologist  
Department of Environmental Conservation  
Agency of Natural Resources  
103 South Main St., Logue Cottage  
Waterbury, VT 05671-2420  
<http://www.anr.state.vt.us/dec/geo/vgs.htm>

1:24,000



Contour Interval 20 Feet



**OVERBURDEN AQUIFERS, BRANDON, VERMONT**

by  
**Dave DeSimone**  
2008

Digital Cartography by Marci Young and Marjorie Gale

Base map from U.S. Geological Survey.  
Quadrangle names printed in blue.  
Coordinate System: Vermont State Plane, meters, NAD 83.  
Geographic coordinates shown at topo corners are in NAD 83.  
Grid overlay on map is Universal Transverse Mercator,  
Zone 18N, NAD 27.  
Digital Cartography: M. Young and M. Gale  
Date: September 2008

Research supported by the Vermont Geological Survey,  
Dept. of Environmental Conservation, VT ANR.  
This geologic map was funded in part by the USGS  
National Cooperative Mapping Program,  
the Brandon Fire District and the Town of Brandon.  
The views and conclusions contained in this document are  
those of the authors and should  
not be interpreted as necessarily representing the official  
policies, either expressed or implied,  
of the U.S. Government.

