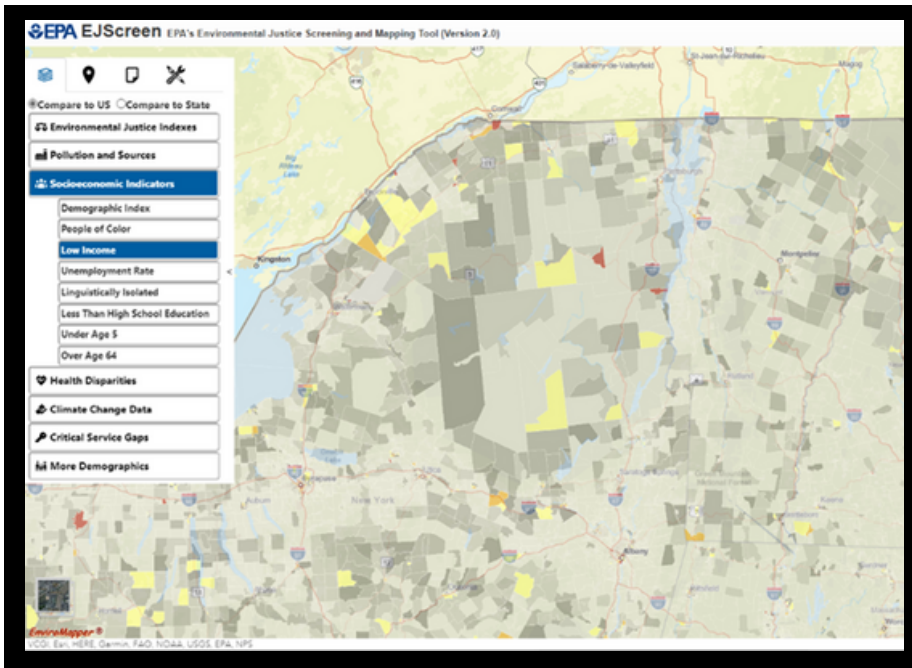


Environmental Protection Agency (EPA) EJScreen

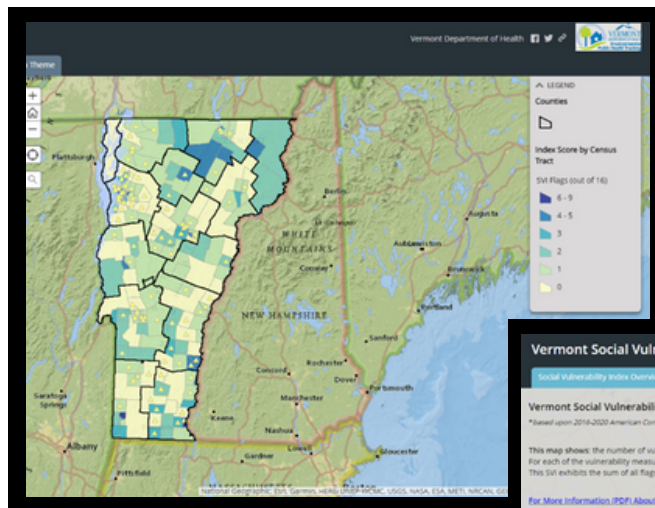


EJ Screen is a national environmental justice mapping and screening tool run by the Environmental Protection Agency for the purpose of combining environmental and demographic datasets. All datasets included are at the block group level and nationally available. The datasets are updated sporadically as new information becomes available and therefore vary in age. The tool combines 12 “environmental indicators” and 7 “demographic indicators” for a total of 12 “EJ indexes”.

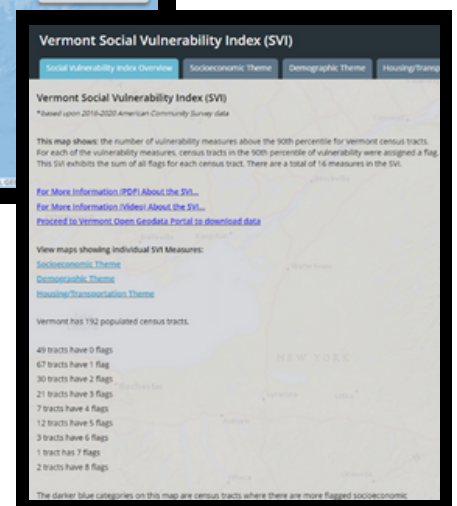
[Explore the Environmental Protection Agency's EJ Screen.](#)

Vermont Department of Health Social Vulnerability Index

The Vermont Social Vulnerability Index is a state-level planning tool produced by the Vermont Department of Health with the purpose of evaluating the relative social vulnerability across the state. The index is comprised of 16 measures of vulnerability at the census tract level. The data included are 5-year estimates from the 2016 American Community Survey.



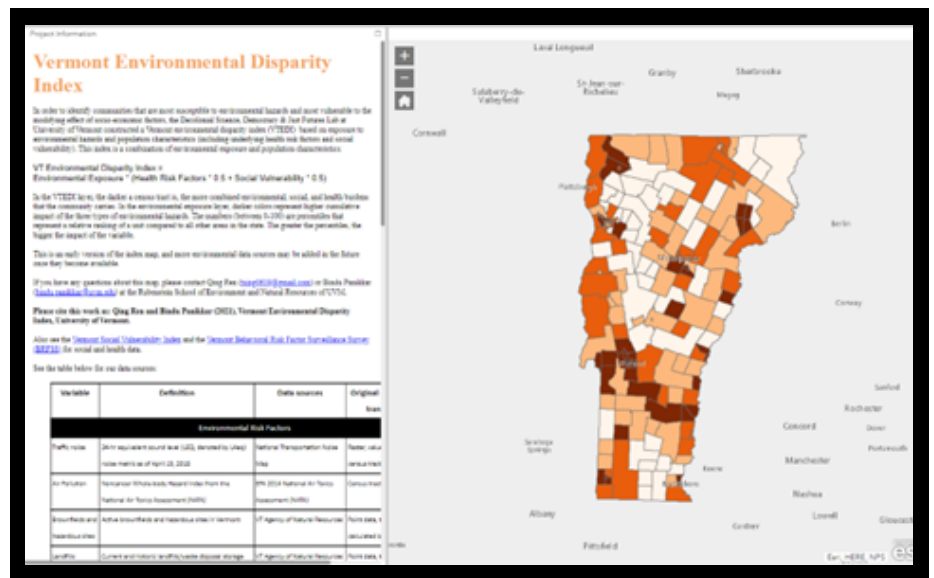
[Explore the Vermont Social Vulnerability Index \(SVI\).](#)



Vermont Environmental Disparity Index

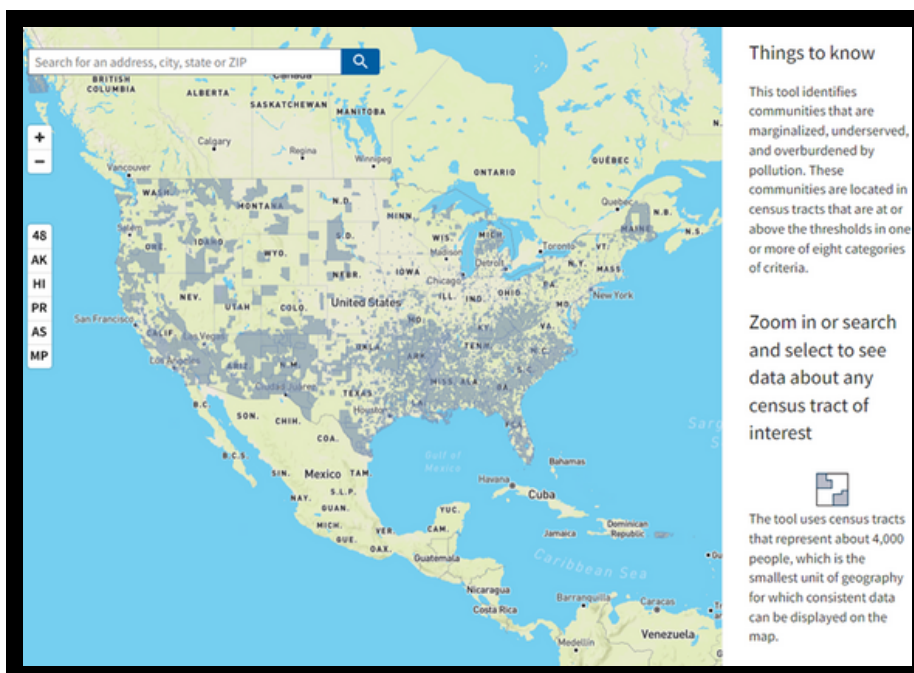
The Vermont Environmental Disparity Index is a tool generated by a PhD candidate at The University of Vermont for the purpose of identifying communities that are most susceptible to environmental hazards. The index is a combination of environmental risk factors and population characteristics (which includes health risk factors as well as social vulnerability). It is unclear at this time if or how often the data are updated. The citation for the tool is as follows:

Qing Ren and Bindu Panikkar (2021), Vermont Environmental Disparity Index, University of Vermont.



Explore the [Vermont Environmental Disparity Index](#).

Climate and Economic Justice Screening Tool



Explore the [Climate and Economic Justice Screening Tool](#).

The Climate and Economic Justice Screening tool is a national environmental screening tool created by the Council on Environmental Quality. The tool uses eight indicators at the census tract level to identify communities that are marginalized, underserved, and overburdened by pollution. The tool is currently in public beta form and will be updated.