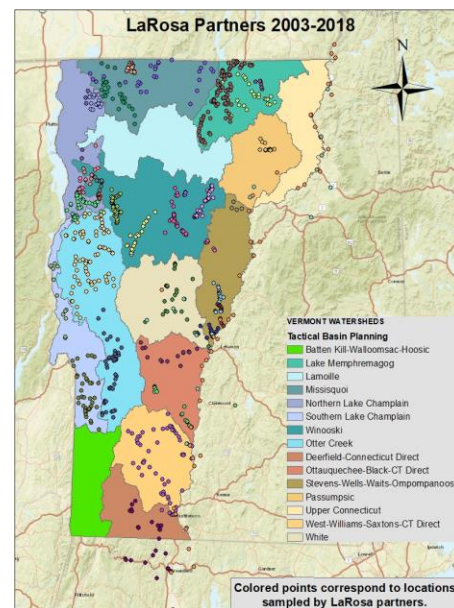


# LAROSA PARTNERSHIP PROGRAM NEWSLETTER



## UPDATES:

1. VAEL will be fully operating and ready to start accepting samples on March 7<sup>th</sup>.

2. The annual LaRosa training/orientation will take place on Friday, March 29<sup>th</sup> at the new VAEL lab in Randolph. More details to come.

## ABOUT THE LAROSA PARTNERSHIP PROGRAM

Since 2003, this partnership has helped watershed associations and monitoring groups across the state of Vermont implement new and/or ongoing surface water monitoring projects for waters in need of water quality assessment by helping to alleviate the financial burden of laboratory analysis costs.

## QUESTIONS WE HAVE RECEIVED

**Q: How do I incorporate data into my final report that is below the reporting limit (e.g. TP is <5 ug/L)?**

A: For the purposes of your calculations and graphs, use the value of the reporting limit (5 ug/L for TP). Be sure to mention in your report or in any tables that those values are below the reporting limit.

**Q: Can LaRosa staff provide letters of support for outside grants?**

A: Yes! If you are applying for additional funding we would be happy to write a letter of support regarding your 2019 sampling plan.

## FLOW OBSERVATIONS

Remember to record flow observations when you collect your samples this year. The VTDEC specifically requested this information and we are developing a more efficient way to access the data in our system. Here's what is needed:

**1. Flow level:** high, moderate, or low

**2. Flow type:** base or freshet

If you have questions or would like to receive a document detailing how to determine flow level and type, contact Kristen (Kristen.switzer@partner.vermont.gov).

## A Message From VAEL:

Samples turned in with less than 30% of their hold times left are most at risk of the analytical testing being completed over hold time. This affects VAEL's accreditation status and may impact other client's data. Please keep this in mind when collecting your samples. Here is a document with hold times:

<https://www.wetlaboratory.com/wp-content/uploads/2014/05/SmplePresandHldTms.pdf>

## Spring Stream Walks

If you would like more information about what's going on in the environment around any of your sites, speak with Kristen about conducting a stream walk for your organization this spring.

**LaRosa website:** <https://dec.vermont.gov/watershed/map/monitor/larosa>