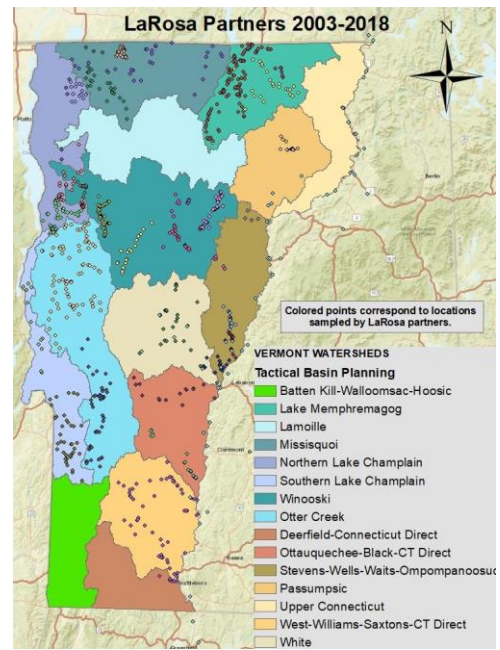


LAROSA PARTNERSHIP PROGRAM NEWSLETTER



UPDATES:

1. Clean Excel sheets are currently being distributed to partners containing 2018 data.

2. Updates and new materials have been added to the LaRosa website. Check it out!

REMINDERS:

1. Check your QAPP for the 2018 final report deadline. Report templates are available on the LaRosa website.

2. A survey was sent out on Wednesday the 10th. If you haven't already, please fill this out. We value your feedback!

ABOUT THE LAROSA PARTNERSHIP PROGRAM

Since 2003, this partnership has helped watershed associations and monitoring groups across the state of Vermont implement new and/or ongoing surface water monitoring projects for waters in need of water quality assessment by helping to alleviate the financial burden of laboratory analysis costs.

QUESTIONS WE HAVE RECEIVED

Q: When will the Vermont Agriculture and Environmental Laboratory (VAEL) be moving to Randolph?

A: The expected date for the lab to be up and running is April 1st, but it could be earlier.

Q: Do you offer trainings on how to analyze data?

A: We do not offer a general training, but can work with partners individually on their data analysis needs. Contact LaRosa Staff with questions or to set up a meeting.

Q: How does funding look for 2019?

A: The funding looks stable and similar to 2018 funding levels.

❖ **SEND US YOUR PHOTOS/VIDEOS!** We are currently collecting photos/videos from partners to put on our website! Please send any you have to Kristen.

❖ **GIS IN LAROSA.** We are brainstorming ways to better incorporate GIS into the program this year. If you have any specific ideas or desires of what this will include, please email Kristen.

CONTACT LAROSA STAFF

Jim Kellogg, LaRosa Partnership Program Coordinator:
Jim.Kellogg@vermont.gov

Kristen Switzer, ECO AmeriCorps Member:
Kristen.Switzer@partner.vermont.gov